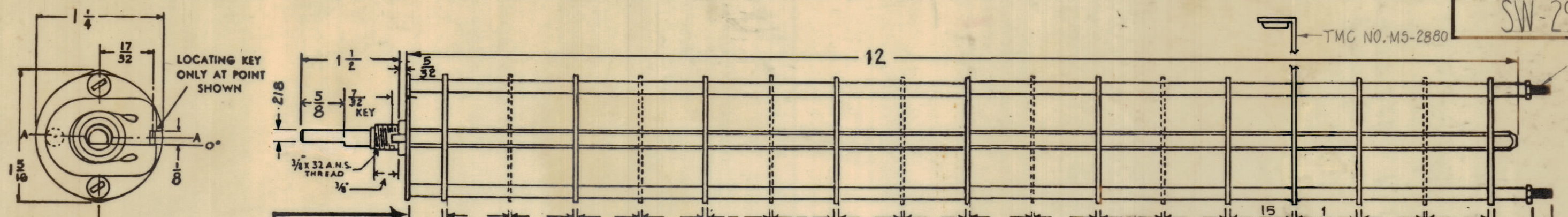
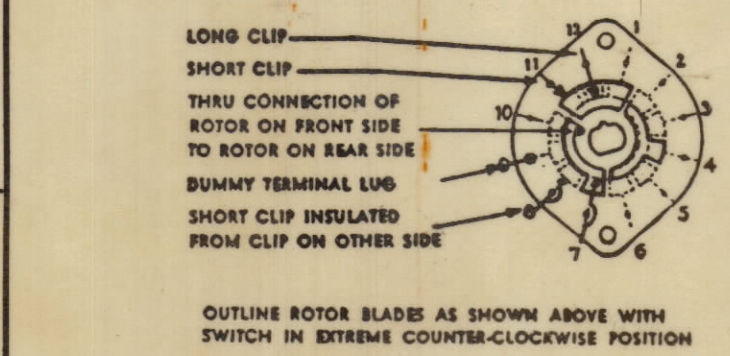


SW-291 A

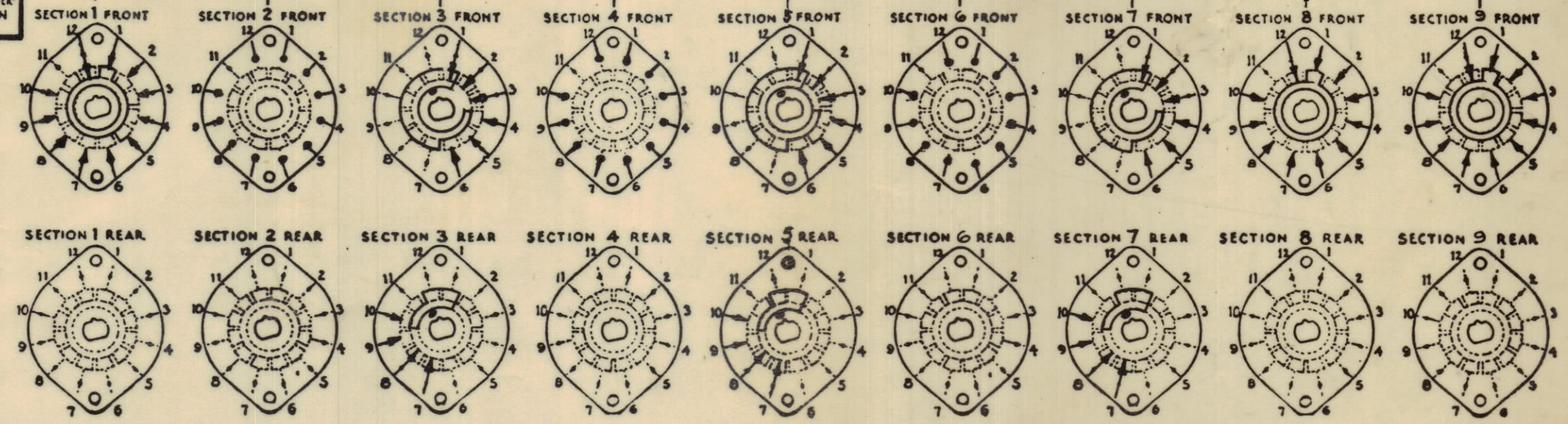
NON-SHORTING TYPE CONTACTS, SECTIONS 1,8,9
 SHORTING TYPE CONTACTS, SECTIONS 3,5,7
 DUMMY TYPE CONTACTS, SECTIONS 2,4,6
 NOTE - REMOVE ROTATION STOP, TO PERMIT CONTINUOUS ROTATION.



SYMBOLS USED IN MARKING PRINT

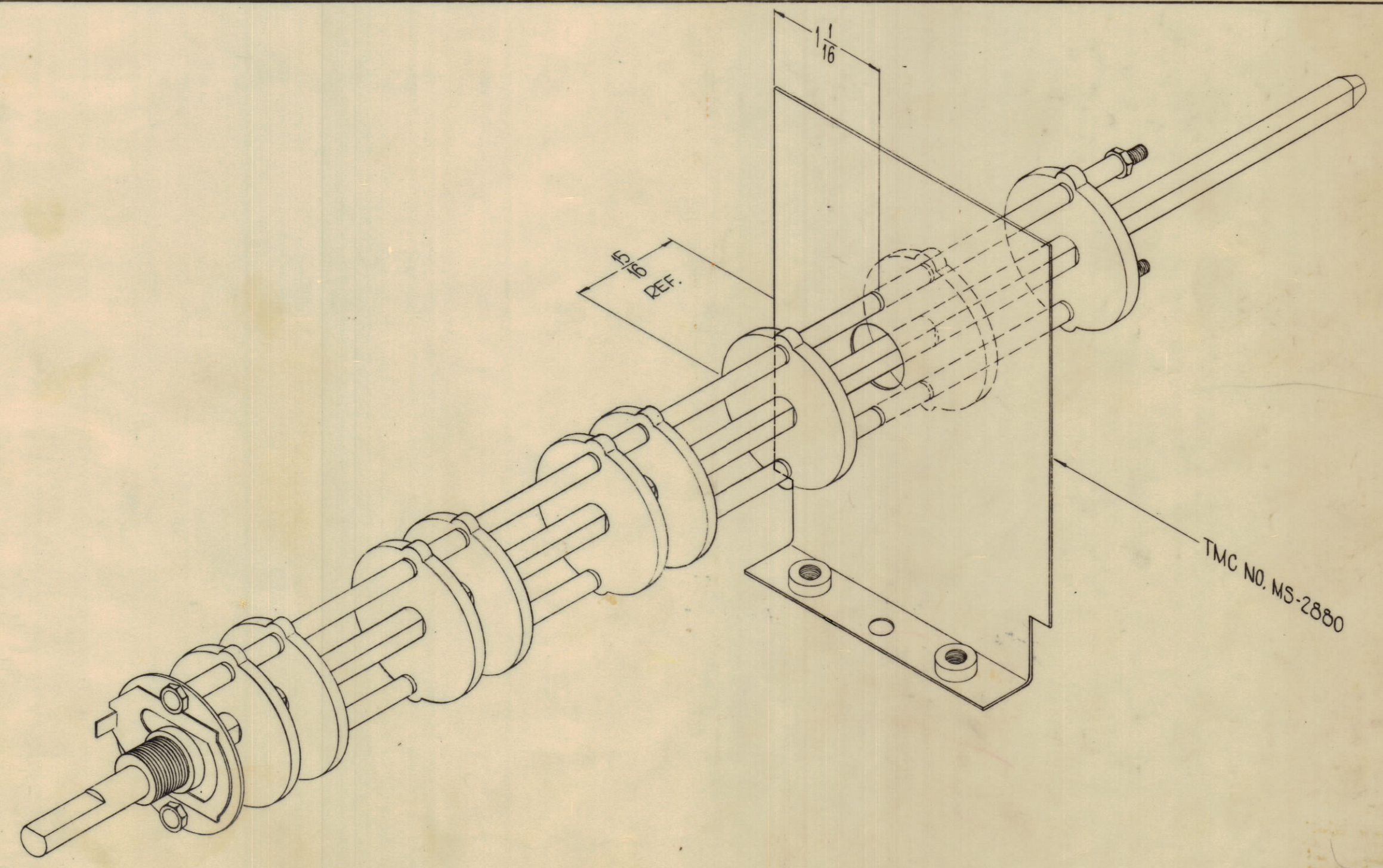


NUMBER OF SECTIONS 9
 NUMBER OF POSITIONS 12
 ANGLE OF THROW 30° (30° OR 60°)



SPECIFICATIONS
 SHORTING TYPE CONTACTS NON-SHORTING IF NOT SPECIFIED SHORTING TYPE WILL BE SUPPLIED.
 INSULATION: BAKELITE MYCALEX SPECIFY IMPREGNATION IF REQUIRED.
 FINISH REQUIREMENTS: COMMERCIAL ARMY NAVY SALT TEST (IF ANY GIVE DETAILS)
 CONTACTS AND ROTORS: SILVER PLATED BRASS SOLID SILVER ALLOY IF NOT SPECIFIED SILVER PLATED BRASS WILL BE SUPPLIED.
 MOUNTING HARDWARE: SUPPLY 1 3/8" .32 NUTS 1/2" ACROSS FLATS; MATERIAL BRASS PLATING NICKEL
 1 3/8" INTERNAL TOOTH LOCKWASHER; MATERIAL PLATING
 STAMP PART NUMBER SW-291 ON FRONT PLATE, YES NO

NOTES~
 BRACKET MS-2880 SUPPLIED BY TMC AND ASSEMBLED AS SHOWN.



NOTE-CONTACTS LEFT OFF OF WAFERS FOR PURPOSE OF CLARITY.

SYM	ZONE	DESCRIPTION	DATE	CH. NO.	DRAFTS	CHECKER	ENG. APP.
A		SHAFT "FLAT" REVISED	1/3/69	19159	244	Hde	op
UNLESS OTHERWISE SPECIFIED:			SCALE				
DIMENSIONS ARE IN INCHES			MAXIMUM ALLOWABLE TOLERANCES HAVE BEEN DETERMINED AND ANY DEVIATIONS WILL BE CAUSE FOR REJECTION. REMOVE ALL BURRS & SHARP EDGES				
TOLERANCES ON FRACTIONS ± 1/64			DECIMALS ± .005		ANGLES ± 1/2°		

REQ. PER UNIT	MODEL	SECTION	ASS'Y. NO.	DATE
2	HFS-1	3200,3300 DECKS	A-2556	8-15-62
USED ON				

REQ. ITEM	PART NO.	J. STRUMMER	DESCRIPTION	SYMBOL
STOCK SIZE		THE TECHNICAL MATERIEL CORP. MAMARONECK, NEW YORK		
MATERIAL		SWITCH ROTARY 3200, 3300 DECK		
TYPE & TEMPER		HEAT TREAT. SPEC.		
FINISH & SPEC. NO.		ELEC. DES. APP. MECH. DES. APP. SHEET OF		
DRAWN		CHECKED		FINAL APPROVAL
John C. Biele		JMA		SW-291