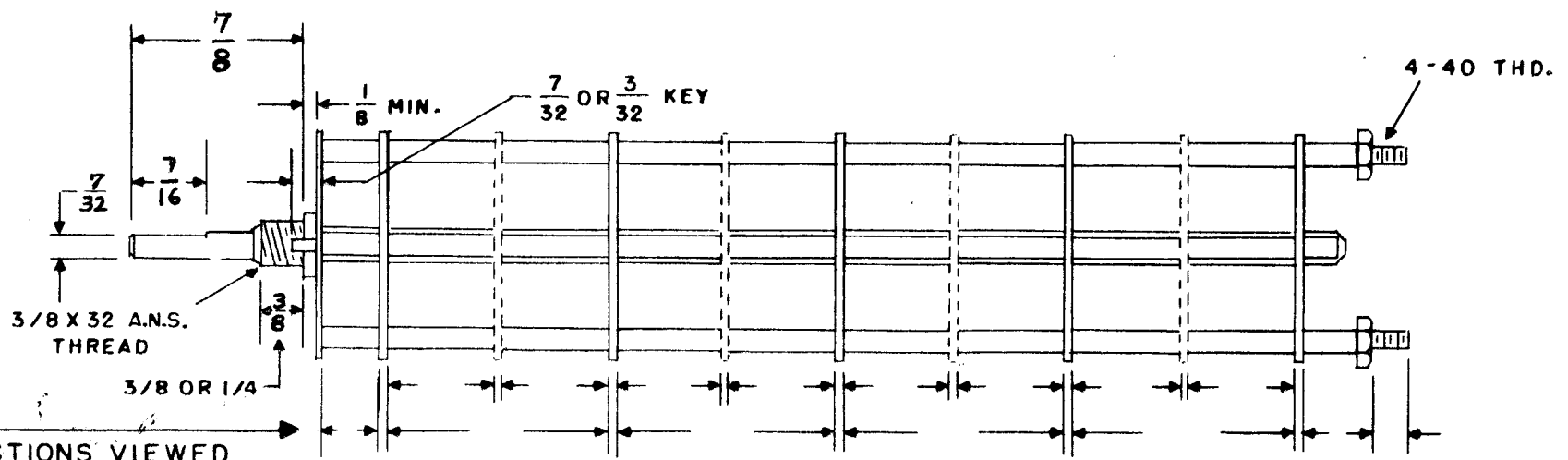
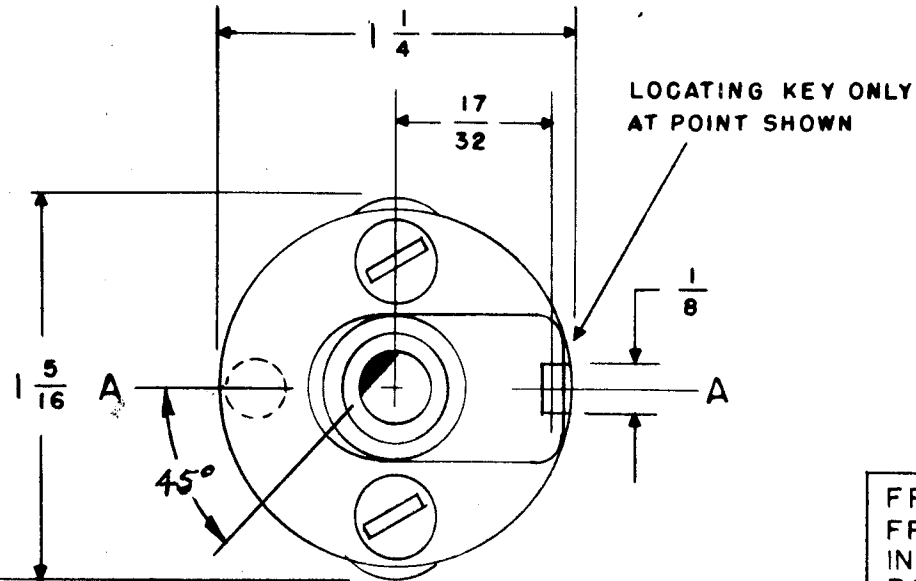


SW-280 A



FRONT & REAR OF SECTIONS VIEWED FROM FRONT OR KNOB END OF SWITCH IN EXTREME COUNTER-CLOCKWISE POSITION

SHOW CUT AWAY PORTION OF FLAT IN BLACK AND GIVE ANGLE TO LINE A-A ± 3°. (STANDARD RMA KNURLED AND SLOTTED SHAFT ALSO AVAILABLE)

NUMBER OF SECTIONS 1
 NUMBER OF POSITIONS 4
 ANGLE OF THROW 30° (30° OR 60°)

PART NUMBER SW-280
 STAMP ON FRONT PLATE YES X NO

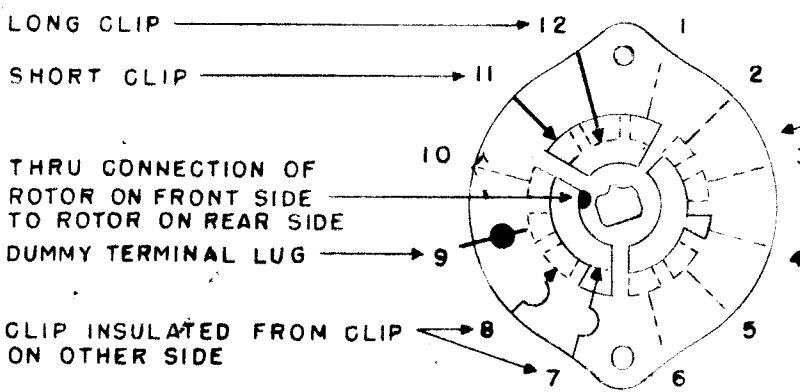
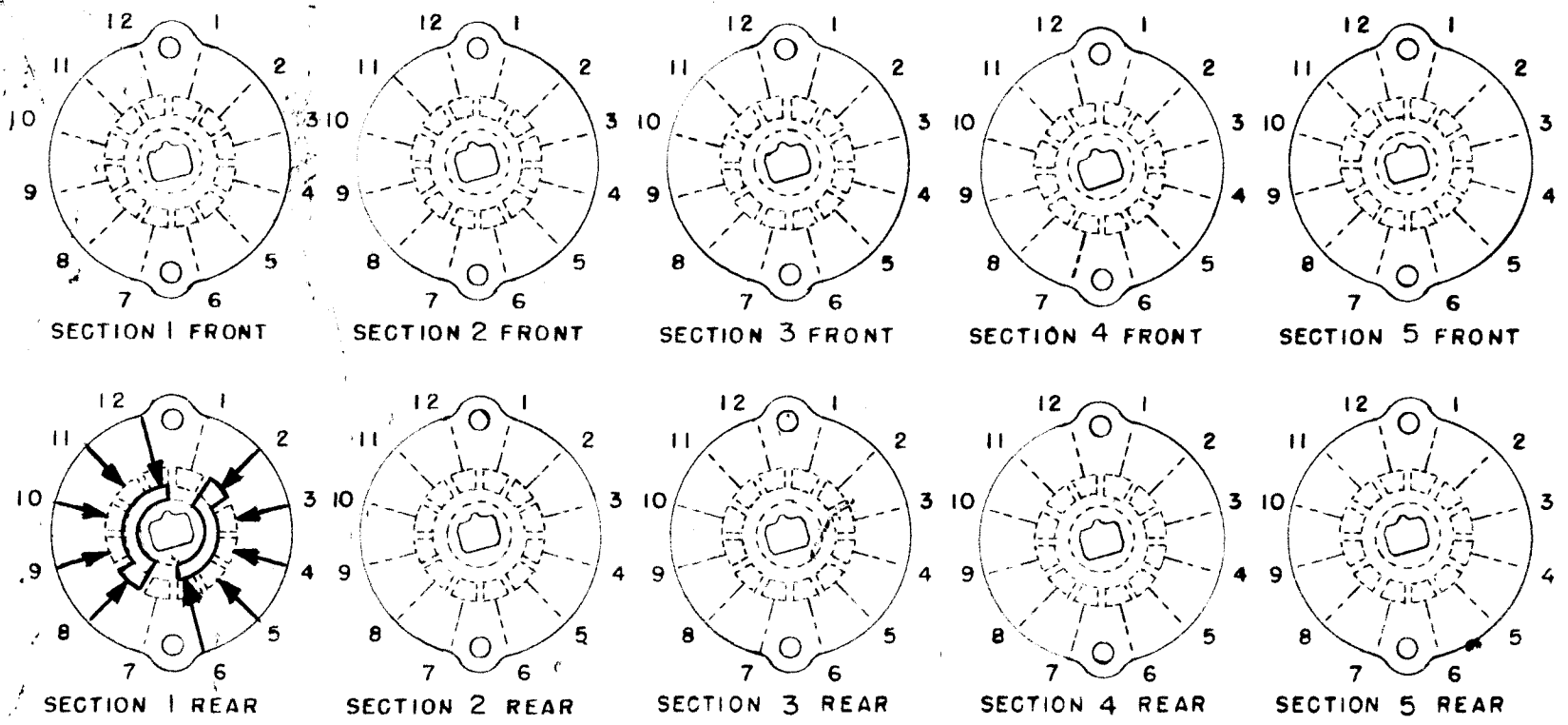
CONTACTS & ROTORS: (IF NOT SPECIFIED, SHORTING TYPE WILL BE SUPPLIED)
 SHORTING NON SHORTING X

MATERIAL: (IF NOT SPECIFIED, SILVER PLATED BRASS WILL BE SUPPLIED)
 SILVER PLATED BRASS X SILVER ALLOY

INSULATION: 1/16 BAKELITE 1/8 MYCALEX X
 SPECIFY IMPREGNATION IF REQUIRED

FINISH REQUIREMENTS: COMMERCIAL ARMY NAVY MILITARY X
 SALT TEST (IF ANY GIVE DETAILS) 200 HR

HARDWARE: SUPPLY
1 3/8-32 NUTS 1/2 ACROSS FLATS STAINLESS STEEL
1 3/8 INTERNAL TOOTH LOCKWASHERS STAINLESS STEEL



SYMBOLS USED IN MARKING PRINT

OAK TYPE F SWITCH

A	ADDED "MILITARY" TO FINISH REQ. & HARDWARE SIZE & FINISH, 7/16 WAS 1/2	8/24/66	16802	CED			
ISSUE	ITEM	CHANGED FROM	DATE	CH. NO.	DRAFTS	CHECKER	ENG. APP.
TOLERANCES		SCALE:					
DEC. DIM. ±		MAXIMUM ALLOWABLE TOLERANCES HAVE BEEN DETERMINED AND ANY DEVIATIONS WILL BE CAUSE FOR REJECTION. REMOVE ALL BURRS AND SHARP EDGES					
FRAC. DIM. ±							
ANGULAR DIM. ±							

OUTLINE ROTOR BLADES AS SHOWN ABOVE WITH SWITCH IN EXTREME COUNTER-CLOCKWISE POSITION

1	ACU		9-6-60	
REQ. PER UNIT	MODEL	PROJECT NO.	ASSY. NO.	DATE
USED ON				

REQ. ITEM	PART NO.	DESCRIPTION	SYMBOL
— A —		THE TECHNICAL MATERIEL CORP. MAMARONECK. NEW YORK	
STOCK SIZE			
— A —		SWITCH, ROTARY	
MATERIAL			
— A —			
TYPE & TEMPER	HEAT TREAT. SPEC.	DRAWN	CHECKED
FINISH & SPEC. NO.	ELEC. DES. APP.	MECH. DES. APP.	

SW-280 A