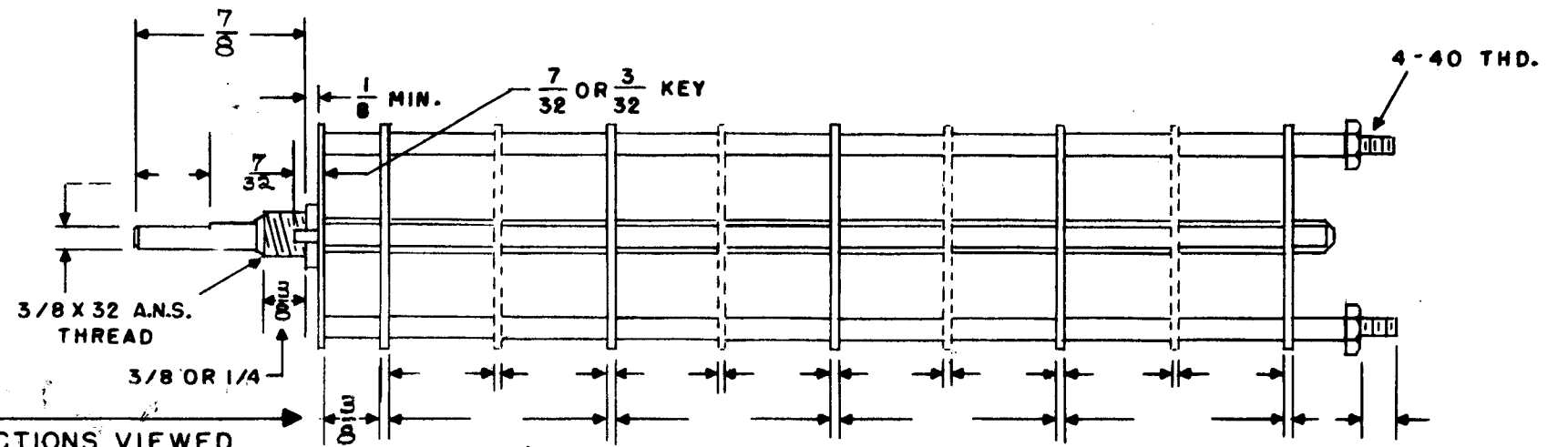
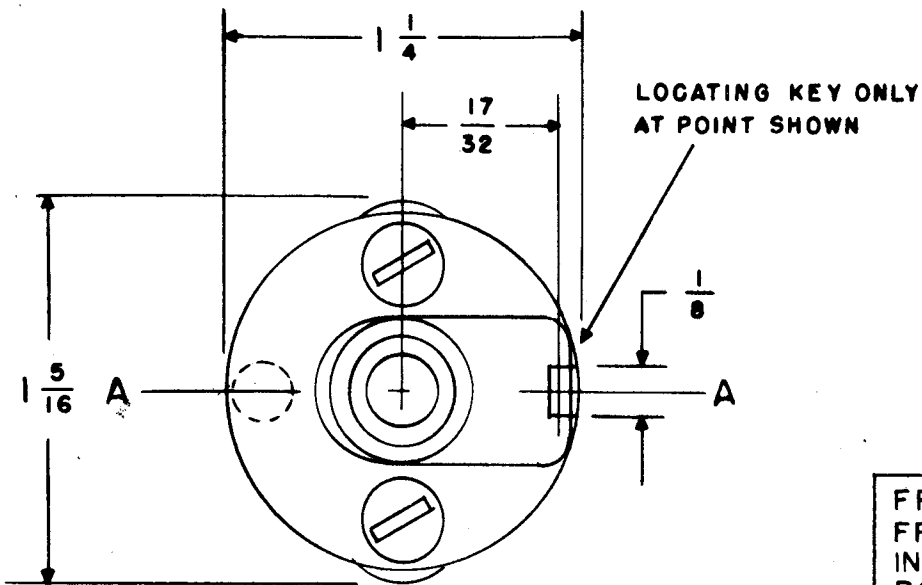


SW-250 B



FRONT & REAR OF SECTIONS VIEWED FROM FRONT OR KNOB END OF SWITCH IN EXTREME COUNTER-CLOCKWISE POSITION

SHOW CUT AWAY PORTION OF FLAT IN BLACK AND GIVE ANGLE TO LINE A-A  $\pm 3^\circ$ . (STANDARD RMA KNURLED AND SLOTTED SHAFT ALSO AVAILABLE)

NUMBER OF SECTIONS 1  
 NUMBER OF POSITIONS 12  
 ANGLE OF THROW 30° (30° OR 60°)

PART NUMBER SW-250-B  
 STAMP ON FRONT PLATE YES  NO

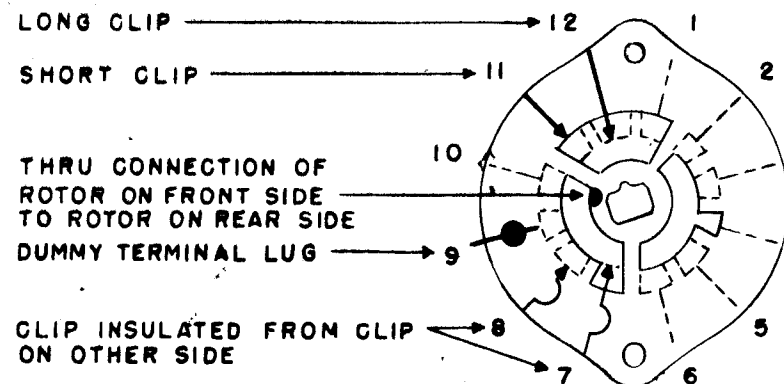
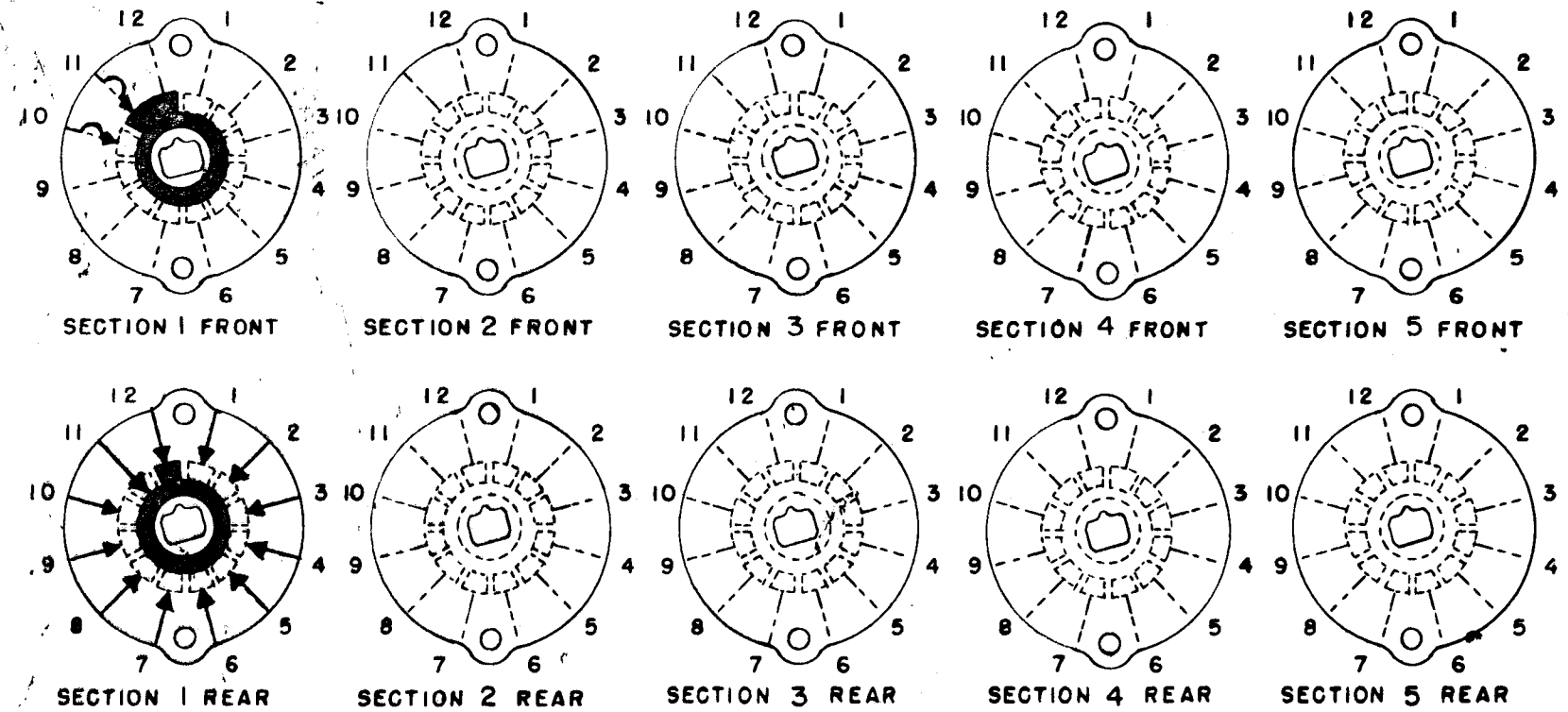
CONTACTS & ROTORS: (IF NOT SPECIFIED, SHORTING TYPE WILL BE SUPPLIED)  
 SHORTING  NON SHORTING

MATERIAL: (IF NOT SPECIFIED, SILVER PLATED BRASS WILL BE SUPPLIED)  
 SILVER PLATED BRASS  SILVER ALLOY

INSULATION: 1/16 BAKELITE  1/8 MYCALEX   
 SPECIFY IMPREGNATION IF REQUIRED \_\_\_\_\_

FINISH REQUIREMENTS: COMMERCIAL  ARMY  NAVY   
 SALT TEST (IF ANY GIVE DETAILS) \_\_\_\_\_

HARDWARE: SUPPLY  
1 3/8-32 NUTS 1/2 ACROSS FLATS  
1 3/8 INTERNAL TOOTH LOCKWASHERS



SYMBOLS USED IN MARKING PRINT

OAK TYPE F SWITCH

OUTLINE ROTOR BLADES AS SHOWN ABOVE WITH SWITCH IN EXTREME COUNTER-CLOCKWISE POSITION

ISSUE	ITEM	CHANGED FROM	DATE	CH. NO.	DRAFTS	CHECKER	ENG. APP.
B		ON SPEC. HARDWARE ADDED	3-4-66	15899			
A	1	REDRAWN & REVISED	1/10/59	695			

REQ. PER UNIT	1	MODEL	GPT-10000	PROJECT NO.	685	ASS'Y. NO.		DATE	
---------------	---	-------	-----------	-------------	-----	------------	--	------	--

REQ. ITEM	PART NO.	DESCRIPTION	SYMBOL
THE TECHNICAL MATERIEL CORP. MAMARONECK, NEW YORK			
SWITCH, ROTARY			
INTERLOCKS, GPT-10000			
TYPE & TEMPER		HEAT TREAT. SPEC.	DRAWN
FINISH & SPEC. NO.		ELEC. DES. APP.	MECH. DES. APP.

CUSTOMERS PART NO. SW-250

CUSTOMER TECH. NAT. COMP.

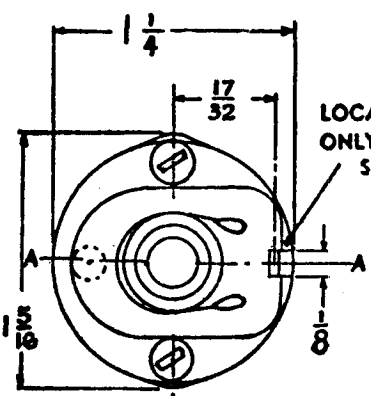
OAK MFG. CO.

1260 CLYBOURN AVE., CHICAGO 10, ILL.

SW-250

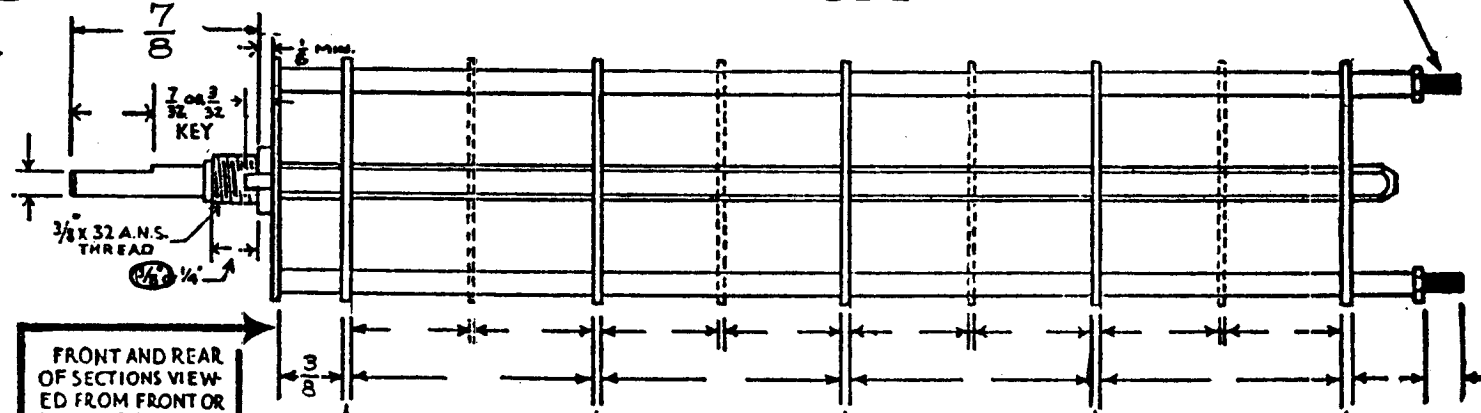
# OAK TYPE F SWITCH

4-40 THREAD



LOCATING KEY ONLY AT POINT SHOWN

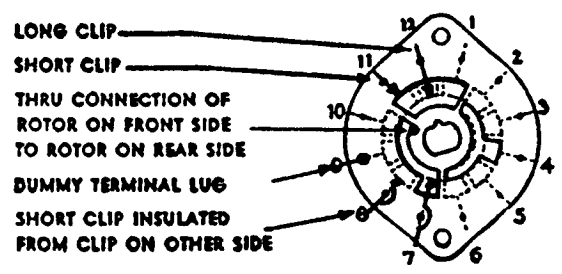
SHOW CUT AWAY PORTION OF FLAT IN BLACK AND GIVE ANGLE TO LINE A-A, ± 3° STANDARD RMA KNURLED AND SLOTTED SHAFT ALSO AVAILABLE



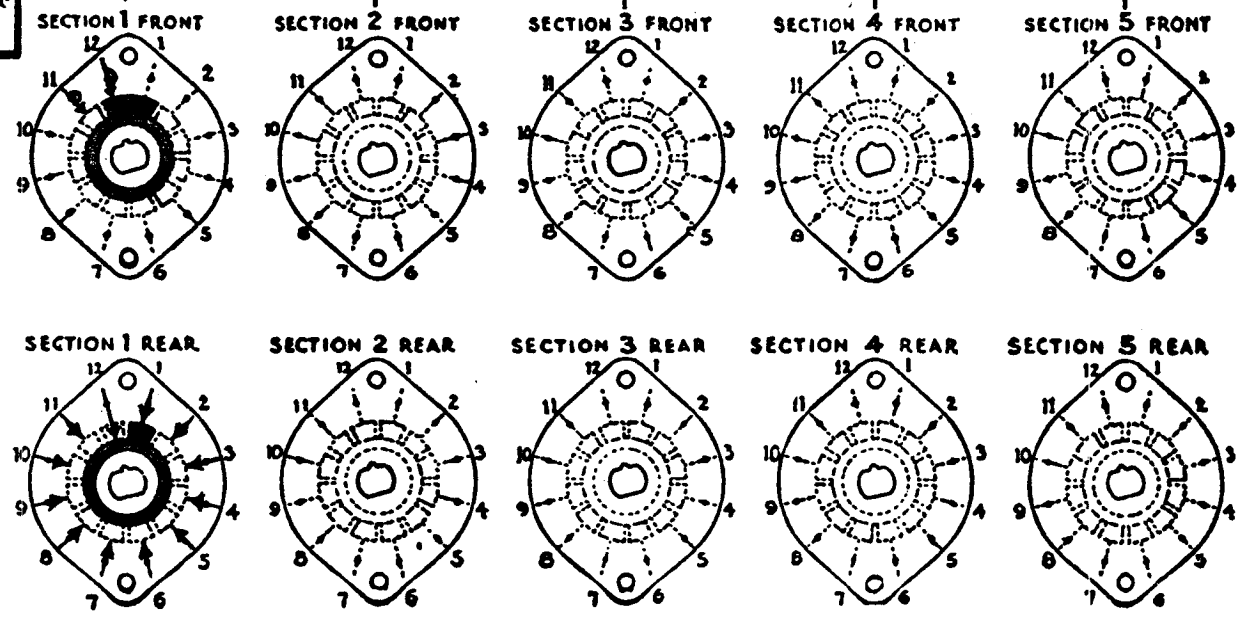
FRONT AND REAR OF SECTIONS VIEWED FROM FRONT OR KNOB END OF SWITCH IN EXTREME COUNTER-CLOCKWISE POSITION

NUMBER OF SECTIONS 1  
 NUMBER OF POSITIONS 12  
 ANGLE OF THROW 30° (30° OR 60°)

### SYMBOLS USED IN MARKING PRINT



OUTLINE ROTOR BLADES AS SHOWN ABOVE WITH SWITCH IN EXTREME COUNTER-CLOCKWISE POSITION



CUSTOMER NOTES

### SPECIFICATIONS

SHORTIN TYPE CONTACTS  NON-SHORTING  IF NOT SPECIFIED SHORTING TYPE WILL BE SUPPLIED.  
 INSULATION:  $\frac{1}{16}$ " BAKELITE ;  $\frac{1}{8}$ " MYCALEX  SPECIFY IMPREGNATION IF REQUIRED  
 FINISH REQUIREMENTS: COMMERCIAL ; ARMY ; NAVY ; SALT TEST (IF ANY GIVE DETAILS)  
 CONTACTS AND ROTORS: SILVER PLATED BRASS ; SOLID SILVER ALLOY ; IF NOT SPECIFIED SILVER PLATED BRASS WILL BE SUPPLIED.  
 MOUNTING HARDWARE: SUPPLY  $\frac{3}{8}$ " - 32 NUTS \_\_\_\_\_ ACROSS FLATS; MATERIAL \_\_\_\_\_ PLATING \_\_\_\_\_  
 \_\_\_\_\_  $\frac{3}{8}$ " INTERNAL TOOTH LOCKWASHER; MATERIAL \_\_\_\_\_ PLATING \_\_\_\_\_  
 STAMP PART NUMBER SW-250 ON FRONT PLATE, YES  NO   
 (NUMBER)

SWITCH, ROTARY, INTERLOCKS  
GPT-10000

2.8  
ARB

SW-250

DATE \_\_\_\_\_