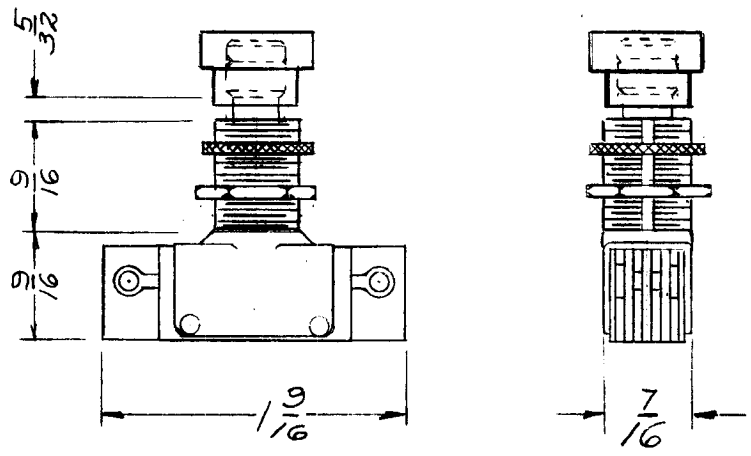


|              |           |           |        |        |   |
|--------------|-----------|-----------|--------|--------|---|
| RE. PER UNIT | USED ON   |           |        | SW-227 | A |
|              | MODEL     | ASSY. NO. | DATE   |        |   |
| 1            | ATS-MCU-2 | SW-227-R  | 6-8-59 |        |   |



MECHANICAL DESCRIPTION

MOMENTARY PUSH SWITCH  
 SLOW MAKE & BREAK CANOPY SIZE  
 SNAP-ON BUTTON (SEE CHART)  
 SOLDER LUG TERMINALS  
 ONE HEX. NUT } 15/32" - 32 THREAD  
 ONE KNURLED NUT }

ELECTRICAL DESCRIPTION

2 CIRCUIT N.O. & N.C.  
 RATING - 1 AMP. 125 VOLT A.C.  
 MODEL 3392 AE

|              |              |
|--------------|--------------|
| TMC PART NO. | BUTTON COLOR |
| SW-227-R     | RED BUTTON   |
| SW-227-B     | BLACK BUTTON |

| REQ. | ITEM | PART NO. | DESCRIPTION   | SYMBOL |
|------|------|----------|---|--------|
|      |      |          | <b>THE TECHNICAL MATERIEL CORP.</b><br>MAMARONECK. NEW YORK |        |
|      |      |          | SWITCH, PUSH BUTTON   |        |
|      |      |          | MOMENTARY CONTACT   |        |
|      |      |          | MATERIAL  |        |
|      |      |          | 9/16/58<br>AWC HJD JLR                                      |        |
|      |      |          | DRAWN CHECKED FINAL APPROVAL                                |        |
|      |      |          | FINISH & SPEC. NO. ELEC. DES. APP. MECH. DES. APP.          |        |
|      |      |          | SW-227 A  |        |

|                |      |                    |   |         |        |         |           |
|----------------|------|--------------------|---|---------|--------|---------|-----------|
| ISSUE          | ITEM | CHANGED FROM       | DATE  | CH. NO. | DRAFTS | CHECKER | ENG. APP. |
| A              | 2    | CHART ADDED        | 5/17/60   | 2274    | 2      | JCB     | J.F.J.    |
|                | 1    | SW-227-R WAS SW227 |   |         |        |         |           |
| TOLERANCES     |      |                    | SCALE: 5401-38 (# 3392)   |         |        |         |           |
| DEC. DIM. ±    |      |                    | MAXIMUM ALLOWABLE TOLERANCES HAVE BEEN DETERMINED AND ANY DEVIATIONS WILL BE CAUSE FOR REJECTION. |         |        |         |           |
| FRAC. DIM. ±   |      |                    | REMOVE ALL BURRS AND SHARP EDGES  |         |        |         |           |
| ANGULAR DIM. ± |      |                    |   |         |        |         |           |