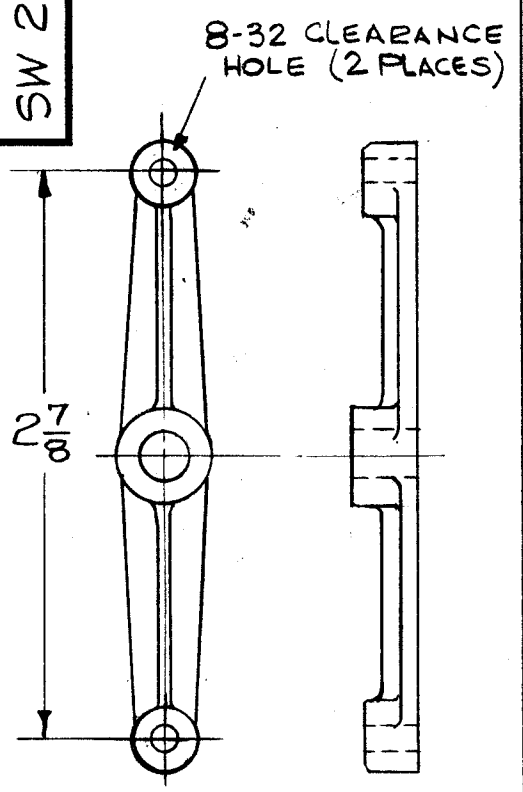
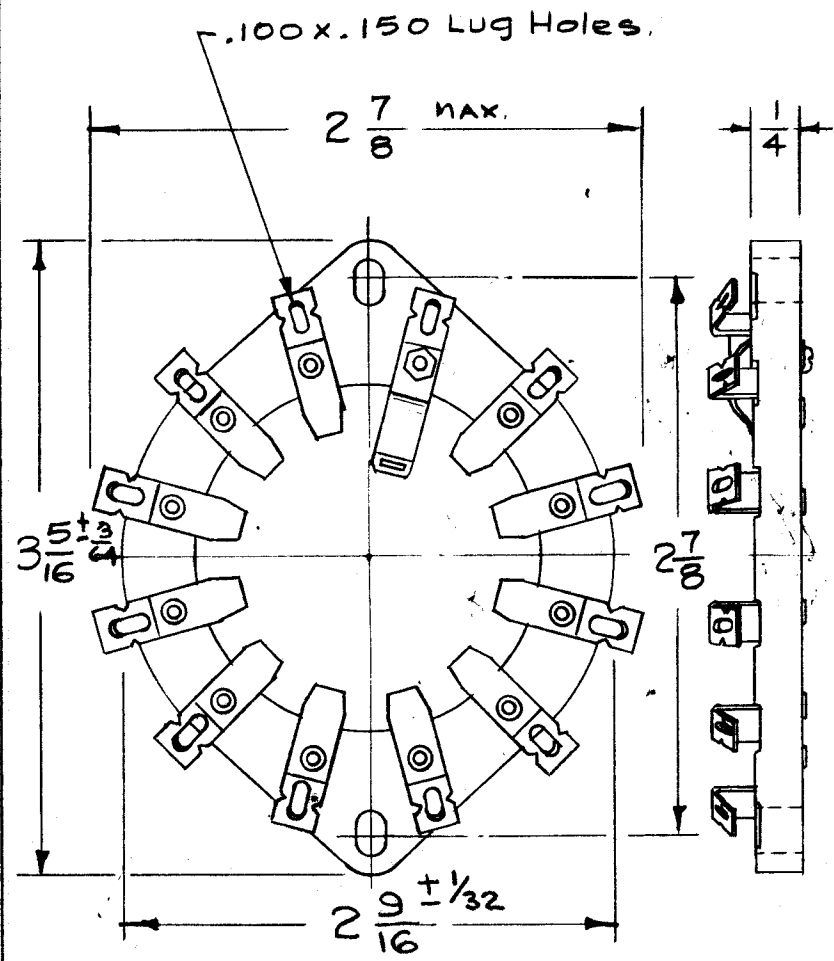


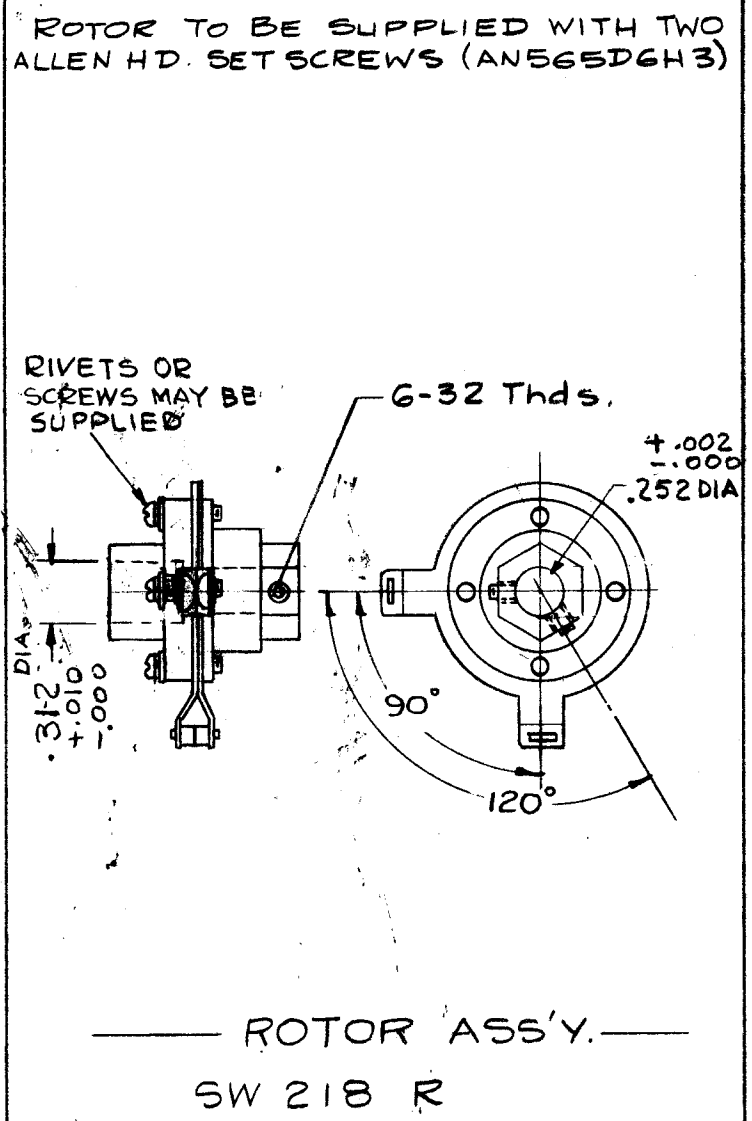
SW 218 F



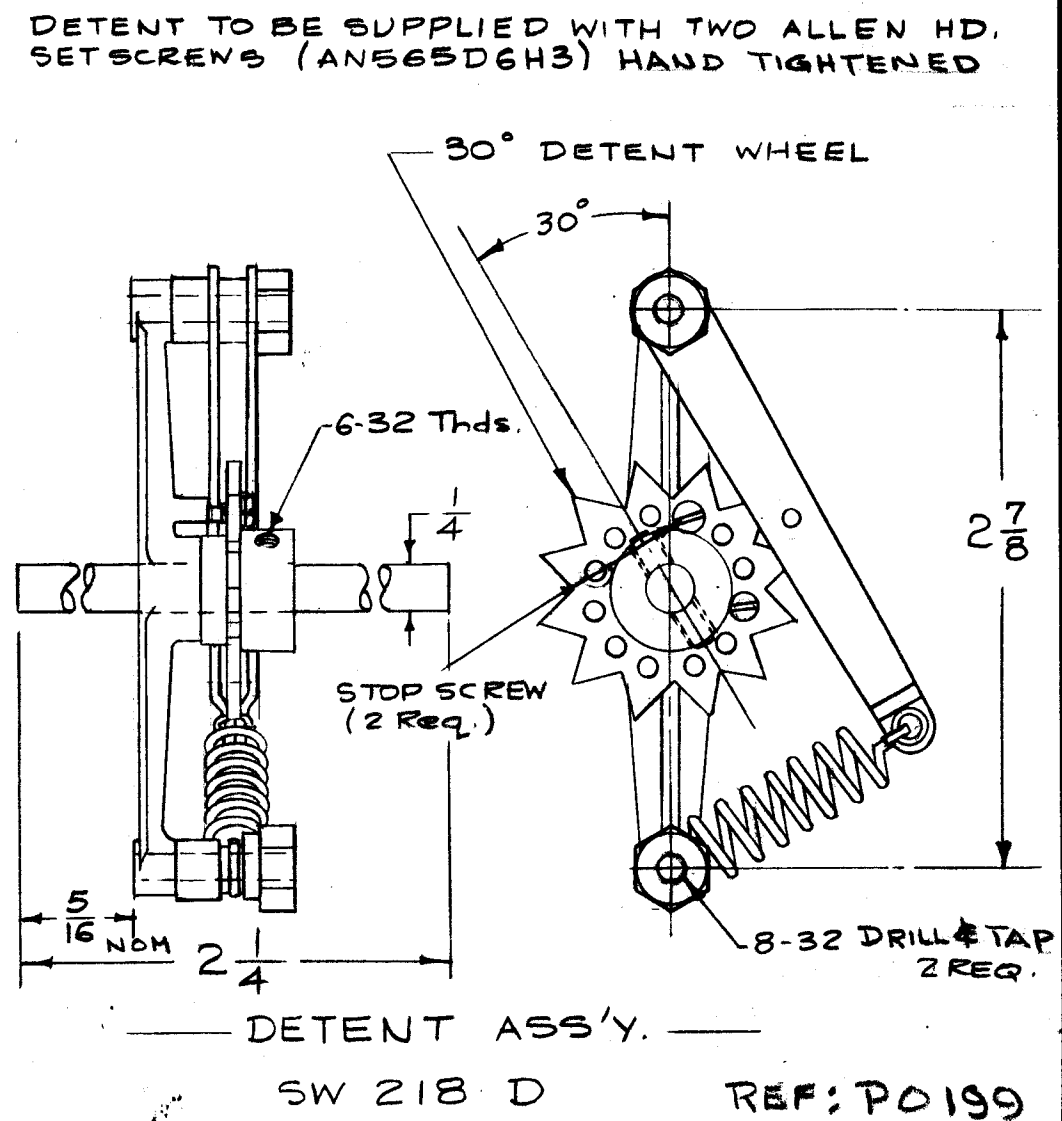
MTG. BAR, REAR
SW 218 B



WAFER
SW 218 W



ROTOR ASS'Y.
SW 218 R



DETENT ASS'Y.
SW 218 D REF: PD199

CONTACTS - BREAK BEFORE MAKE

1 SECTION - 2 POLE - 4 POSITION

| | | | | | | | |
|-------|------|--|---------|---------|--------|---------|-----------|
| F | 3 | B-32 CLEAR. WAS TAP; DELE. TND. RDS; DELE. STD. MOD. | 2-23-66 | 15813 | HUA | JCB | MM |
| E | 2 | ASSY NOTE ADDED | 2/14/66 | 15750 | JAD | JCB | JR |
| D | 1 | 2 9/16 WAS 2 3/4 8/32 TAP WAS CLEARANCE HOLE | | | | | |
| C | 1 | DIMS... 3/12 & .252 ADDED NOTE: RIVETS OR SCREW SUP ADDED | 1-21-66 | 15587 | G.D.L. | JCB | JR |
| B | 1 | Detent Assy Changed | 8-12-60 | 2749 | J.C.B. | JCB | JR |
| A | 1 | SHAFT LENGTH ON SW-218-D WAS 3" | 6/9/58 | 2 | W | JCB | JR |
| A | 1 | MFG. NOTE DELETED | 5/19/58 | 1 | W | JCB | JR |
| ISSUE | ITEM | CHANGED FROM | DATE | CH. NO. | DRAFTS | CHECKER | ENG. APP. |

TOLERANCES
DEC. DIM. ±
FRAC. DIM. ±
ANGULAR DIM. ±

SCALE: S401-113 (MODEL 86 MOD.)

MAXIMUM ALLOWABLE TOLERANCES HAVE BEEN DETERMINED AND ANY DEVIATIONS WILL BE CAUSE FOR REJECTION.
REMOVE ALL BURRS AND SHARP EDGES

| | | | | |
|---------------|---------|-------------|------------|---------|
| 1 | PAL-350 | | | 4-18-58 |
| REQ. PER UNIT | MODEL | PROJECT NO. | ASS'Y. NO. | DATE |
| | | | | USED ON |

| REQ. ITEM | PART NO. | DESCRIPTION | SYMBOL |
|--------------------|----------|--|-----------------|
| STOCK SIZE | | THE TECHNICAL MATERIEL CORP. MAMARONECK, NEW YORK | |
| MATERIAL | | SWITCH, ROTARY, PA BAND | |
| TYPE & TEMPER | | HEAT TREAT. SPEC. | DRAWN |
| FINISH & SPEC. NO. | | ELEC. DES. APP. | MECH. DES. APP. |

164/18/58
A.J.J.
FINAL APPROVAL
SW 218 F