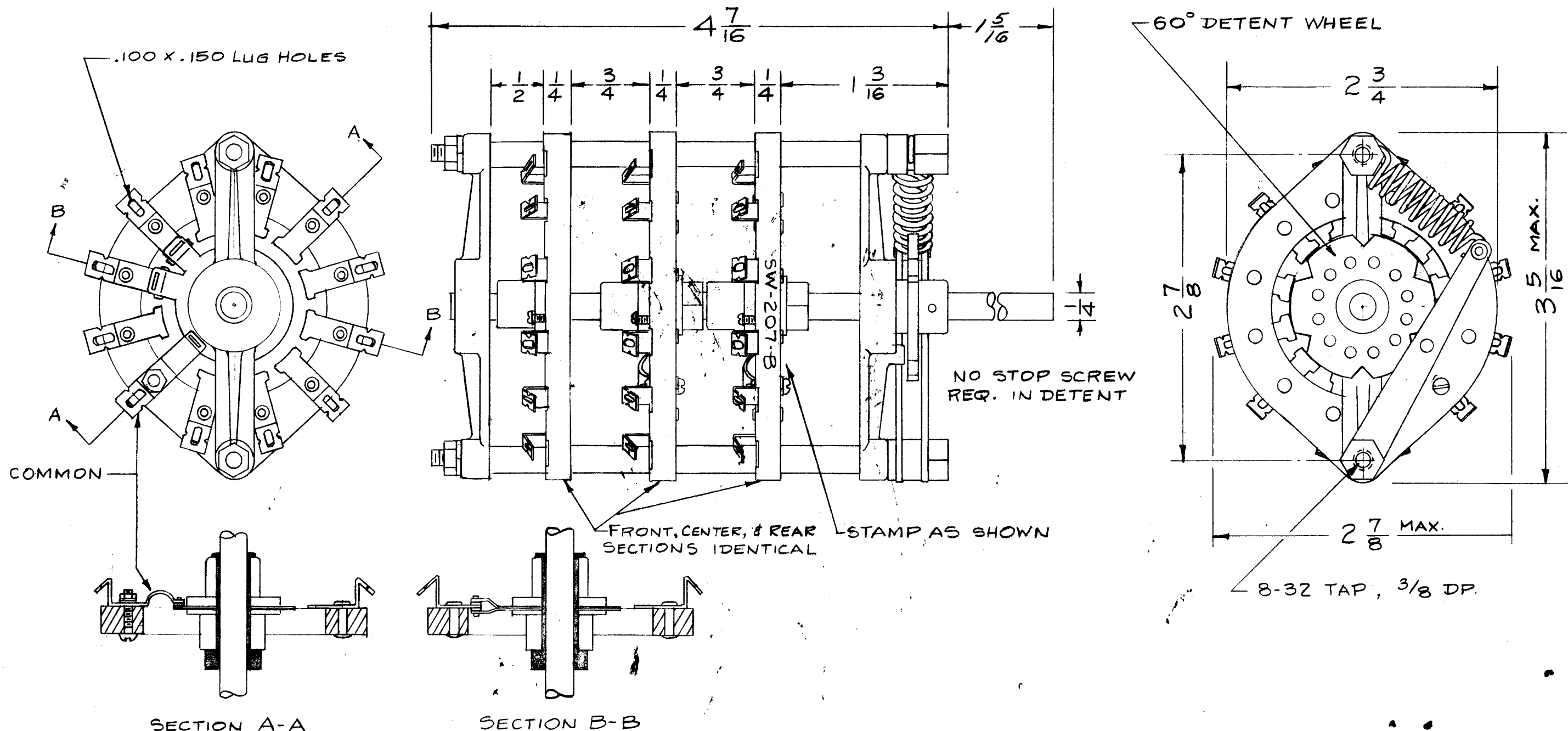


5W-207



CONTACTS- MAKE BEFORE BREAK

THREE SECTION- TWO POLE- SIX POSITION  
BALL BEARING TYPE

ISSUE	ITEM	CHANGED FROM	DATE	CH. NO.	DRAFTS	CHECKER	ENG. APP.
B	1	DIM. CHG. 1 5/16 WAS 2 1/16	5/14/58	2	AW	HQE	AW
A	1	WAS TWO SECTION SIX POSITION ROTOR MOVED 90°	2/11/57	1	16	AW	AW

TOLERANCES  
DEC. DIM. ±  
FRAC. DIM. ±  
ANGULAR DIM. ±

SCALE: S401-113 (MODEL 86 MOD.)  
MAXIMUM ALLOWABLE TOLERANCES HAVE BEEN DETERMINED AND ANY DEVIATIONS WILL BE CAUSE FOR REJECTION. REMOVE ALL BURRS AND SHARP EDGES

REQ. PER UNIT	MODEL	PROJECT NO.	ASS'Y. NO.	DATE
1	ATS-70TU			12-16-57
1	ATS-50TU		A-1505(4)	12-16-57

USED ON

REQ. ITEM	PART NO.	DESCRIPTION	SYMBOL
	M	THE TECHNICAL MATERIEL CORP. MAMARONECK, NEW YORK	
	STOCK SIZE	SWITCH, ROTARY (ATS)	
	M		
	M		
	M	1612-16-57	AW JQR A.J.J.
		DRAWN	CHECKED
		FINISH & SPEC. NO.	ELEC. DES. APP. MECH. DES. APP.

SW-207