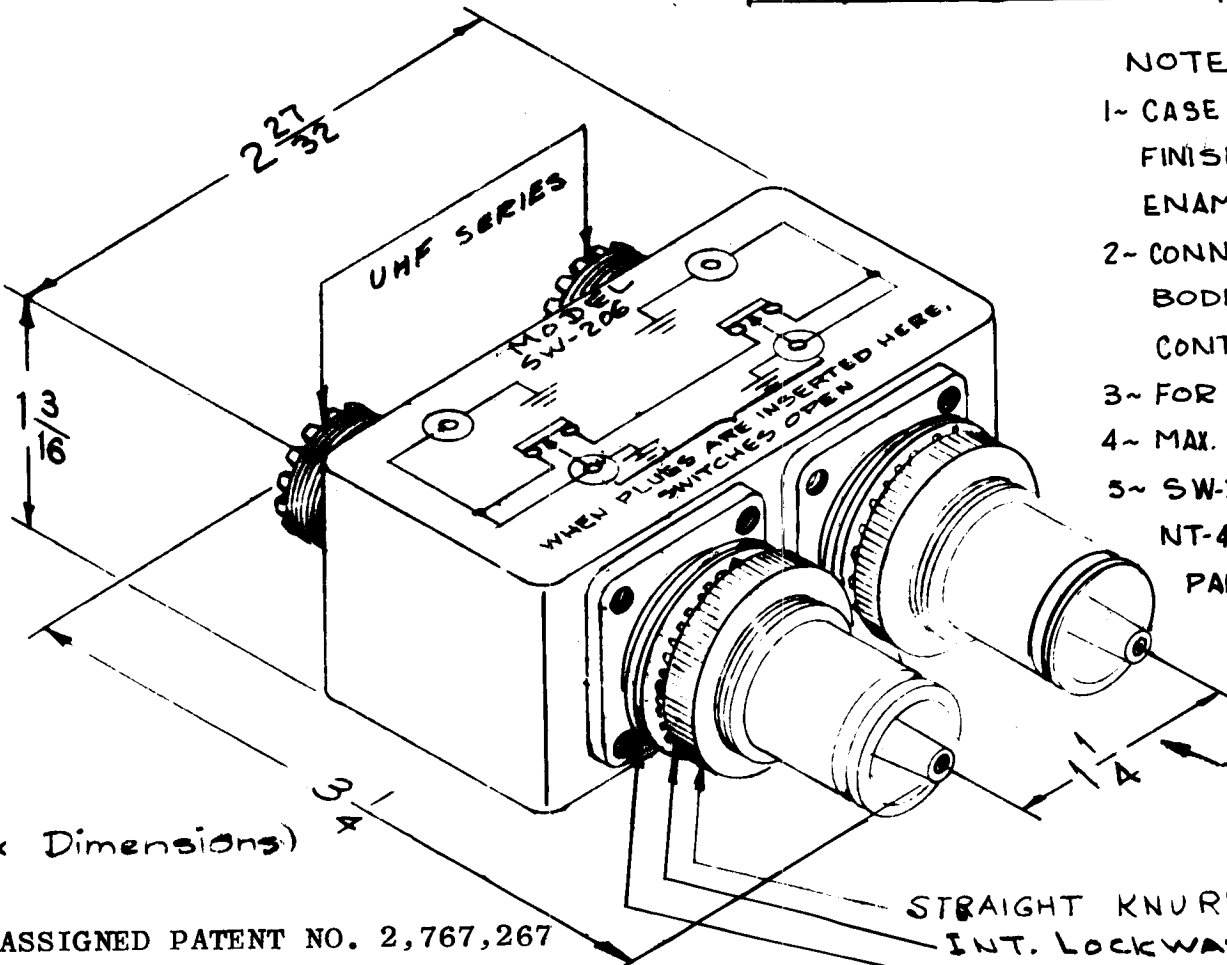


REP. VISIT	USED ON			SW-206	E
	MODEL	ASSEMBLY NO.	DATE		
11	SPP-3		12-23-57		
12	SPP-10		4-23-59		



NOTES:

- 1- CASE - MATERIAL - BRASS
FINISH - S115 TMC SMOOTH GRAY ENAMEL.
- 2- CONNECTORS FINISH:
BODIES - RHODIUM FLASH.
CONTACTS - GOLDFLASH.
- 3- FOR MOUNTING - 13/16 DIA. HOLES
- 4- MAX. PANEL THICKNESS - 3/16
- 5- SW-206 REPLACES 2 NAVY TYPE NT-491388 PART OF NAVY TYPE PANEL SB-932/U.

(Approx Dimensions)

NOTE: ASSIGNED PATENT NO. 2,767,267

REQ. ITEM	PART NO.	DESCRIPTION	SYMBOL
		THE TECHNICAL MATERIEL CORP. MAMARONECK, NEW YORK	
		SWITCH, RF	
		DUAL UHF DUAL QDS.	
E		PATENT NOTE ADDED 9/29/65 14846 H.V. [Signature]	
D	2	NOTES ADDED 2-28-63 8214 [Signature]	
D	1	PICTORIAL CLARIFIED	
ISSUE	ITEM	CHANGED FROM	DATE
		2A-1489	
		MAXIMUM ALLOWABLE TOLERANCES HAVE BEEN DETERMINED AND ANY DEVIATIONS WILL BE CAUSE FOR REJECTION. REMOVE ALL BURRS AND SHARP EDGES	
		TYPE & TEMPER [Signature]	DATE
		FINISH & SPEC. NO.	
		DRAWN	CHECKED
		ELEC. DES. APP.	MECH. DES. APP.
		APPROVAL	
		16 ¹² /23/57 [Signature]	A.J.J.
			SW-206 E