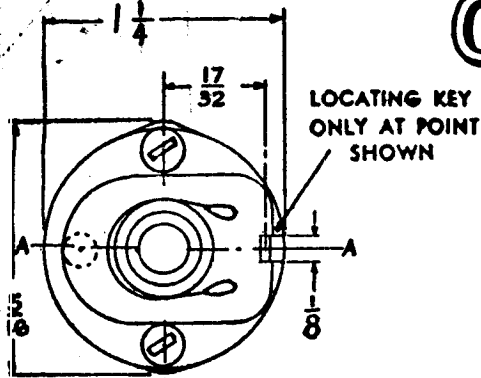


CUSTOMER'S PART NO. SW-199-C

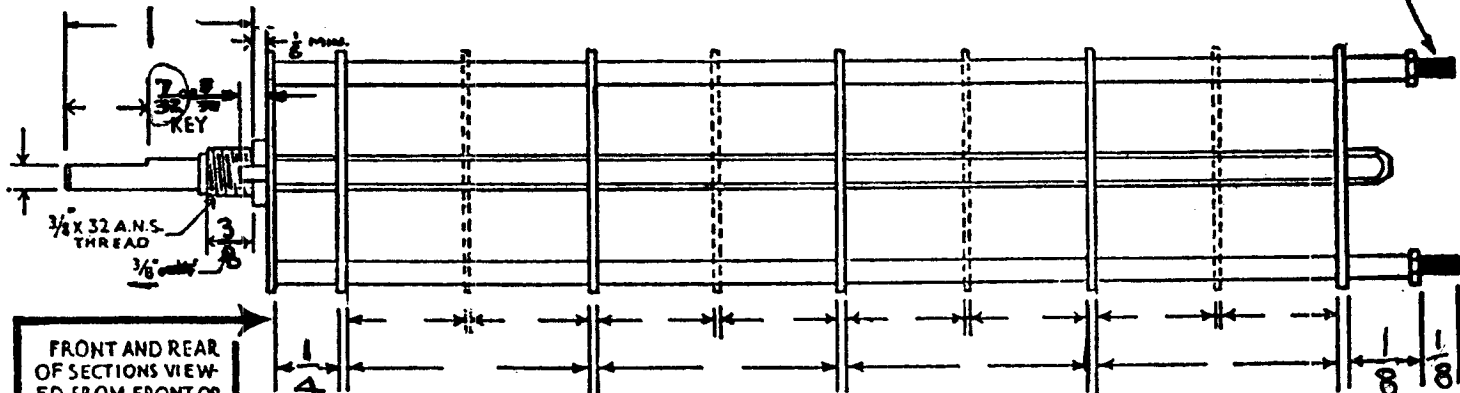
OAK TYPE F SWITCH

SWITCH 4-40 THREAD



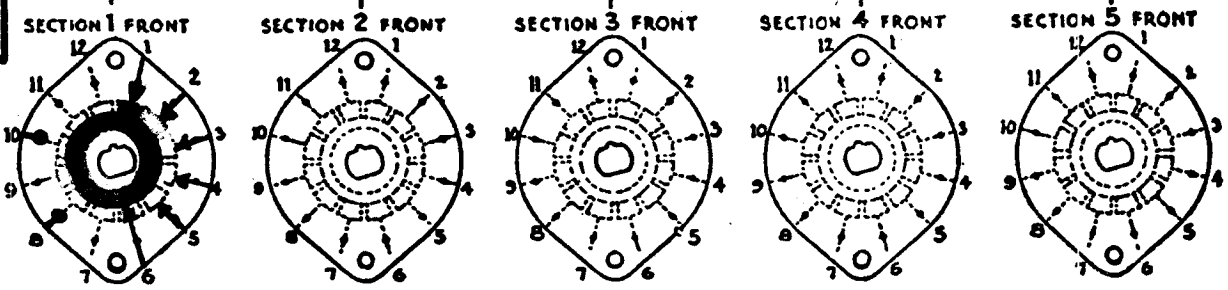
LOCATING KEY ONLY AT POINT SHOWN

SHOW CUT AWAY PORTION OF FLAT IN BLACK AND GIVE ANGLE TO LINE A-A. $\pm 3^\circ$ STANDARD RMA KNURLED AND SLOTTED SHAFT ALSO AVAILABLE

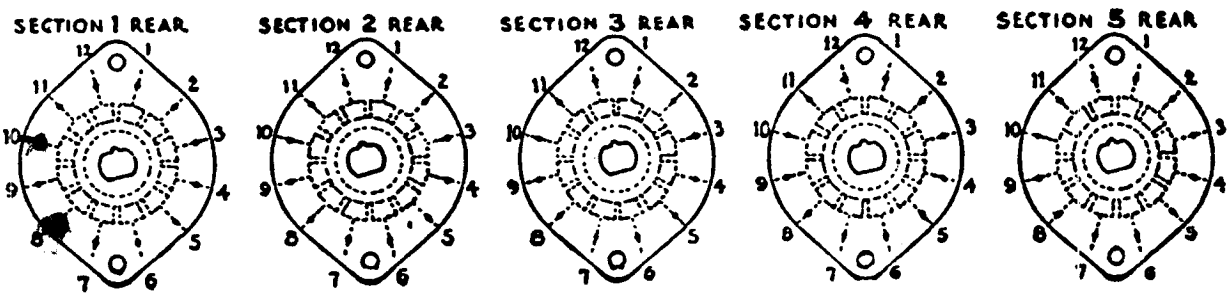
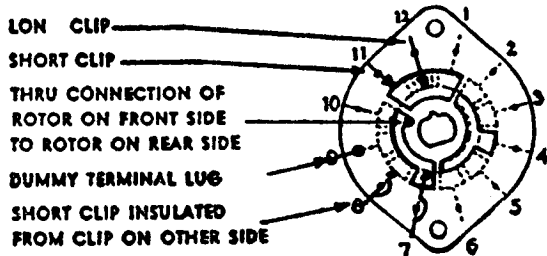


FRONT AND REAR OF SECTIONS VIEWED FROM FRONT OR KNOB END OF SWITCH IN EXTREME COUNTER-CLOCKWISE POSITION

NUMBER OF SECTIONS 5
 NUMBER OF POSITIONS 5
 ANGLE OF THROW 30° (30° OR 45°)



SYMBOLS USED IN MARKING PRINT



OUTLINE ROTOR BLADES AS SHOWN ABOVE WITH SWITCH IN EXTREME COUNTER-CLOCKWISE POSITION

SPECIFICATIONS

SHORTING TYPE CONTACTS NON-SHORTING IF NOT SPECIFIED SHORTING TYPE WILL BE SUPPLIED.
 INSULATION: BAKELITE MYCALEX SPECIFY IMPREGNATION IF REQUIRED.
 FINISH REQUIREMENTS: COMMERCIAL ARMY NAVY SALT TEST (IF ANY GIVE DETAILS).
 CONTACTS AND ROTORS: SILVER PLATED BRASS SOLID SILVER ALLOY IF NOT SPECIFIED SILVER PLATED BRASS WILL BE SUPPLIED.
 MOUNTING HARDWARE: SUPPLY 3/8" - 32 NUTS ACROSS FLATS; MATERIAL PLATING
3/8" INTERNAL TOOTH LOCKWASHER; MATERIAL PLATING

STAMP PART NUMBER SW-199-C (NUMBER) FRONT PLATE, YES NO

CUSTOMER NOTES

SWITCH, METER MODEL SBE.	
THE TECHNICAL MATERIAL CORPORATION MAMARONECK, NEW YORK	
DATE <u>6-3-57</u>	CHKD. <u>DB</u>
DRAWN <u>Jde</u>	APPD. <u>APB</u>
SHEET <u>1</u> OF <u>1</u>	NO. <u>SW-199-C</u>

REQ UNIT	MODEL	ASSY NO.	DATE
1	SBE-2		5-5-58
1	SBE-3	AP101	11-30-59

CUSTOMER

OAK MFG. CO.

1260 CLYBOURN AVE, CHICAGO 10, ILL.

REVISION SHEET

THE TECHNICAL MATERIEL CORP.
MAMARONECK NEW YORK

SW-199

MODEL _____ PROJECT NO _____

DATE	REV.	PAGE	ITEM	DESCRIPTION	REMARKS	CHK.	APP.
10/8/57	A	1	-	7/32 Keyway Added, -	KG		
11/19/57	B	1	-	was not designated previously	KG		JMB
6/14/60	C	1	-	POSITION 1 Added (WAS 4 POS.)			JMB
				POSITION*1 WAS POSITION*2			JMB