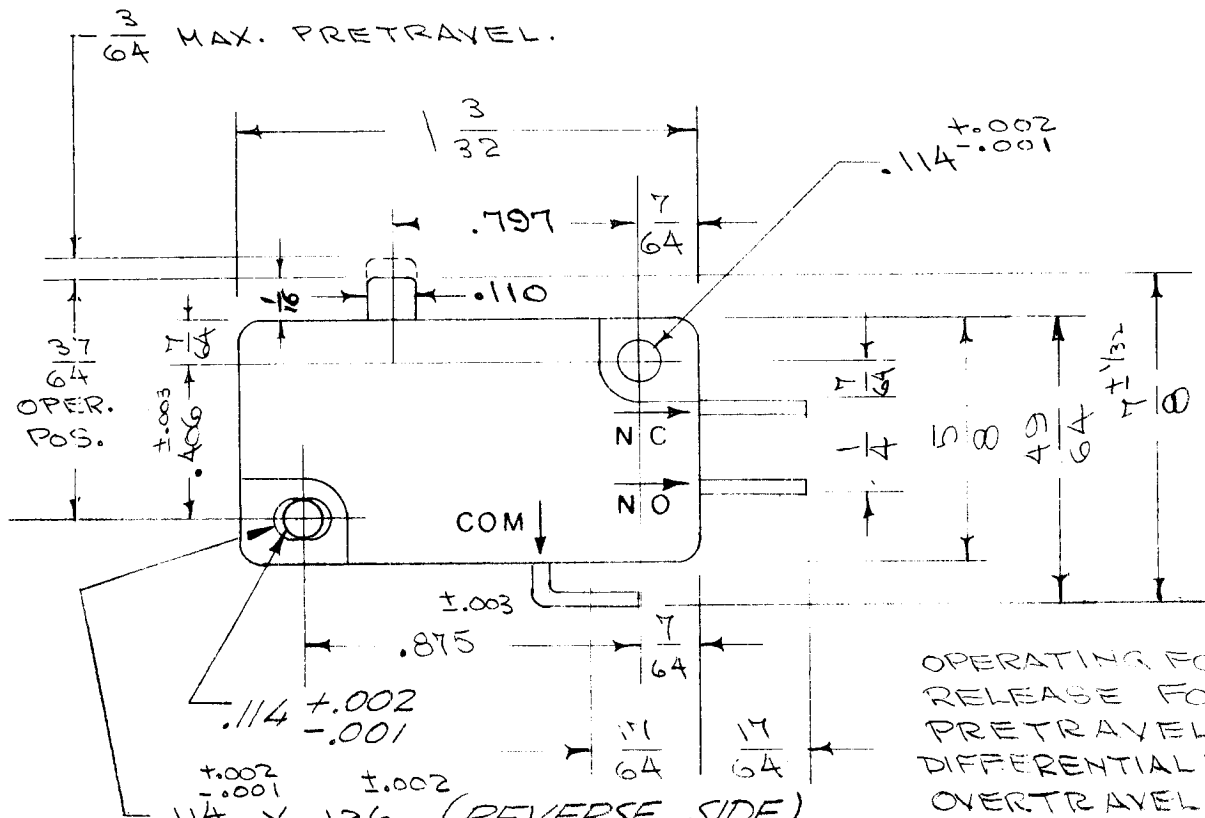


# STANDARD DRAWING

REQ. PER UNIT	USED ON		DATE	SW-189	B
	MODEL	ASS'Y. NO.			



LONG SOLDER LUG - .089 DIA HOLE.

OPERATING FORCE 6 TO 14 OZ.  
 RELEASE FORCE 4 OZ MIN.  
 PRETRAVEL  $\frac{3}{64}$ " MAX.  
 DIFFERENTIAL TRAVEL .006 TO .016 IN.  
 OVERTRAVEL  $\frac{1}{32}$ " MIN.  
 WEIGHT .017 LB. MAX.  
 30 V DC \*INDUCTIVE, 10 A AT SEA LEVEL, 6 A AT 50,000 FT., RESISTIVE, 10 A; \*\* MOTOR LOAD, 6 A.  
 UNDERWRITERS LAB. LISTED FOR 10 A, 125/250 V AC;  $\frac{1}{2}$  A, 125V DC;  $\frac{1}{4}$  A, 125V DC.

\*INDUCTIVE CIRCUITS IN ACC. WITH AN 3179.  
 \*\* MOTOR LOAD RATING BASED ON STARTING CURRENT NOT GREATER THAN SIX TIMES RATED RUNNING CURRENT SHOWN.

REF: MICRO CAT. NO. V3-15

REQ. UNIT	ITEM	PART NO.	DESCRIPTION	SYMB L					
			THE TECHNICAL MATERIEL CORP. MAMARONECK, NEW YORK						
			STOCK SIZE						
B		REVERSE S. ADD	SWITCH, PUSH, MICRO						
A	1	$\frac{1}{16}$ ADDED							
ISSUE	ITEM	CHANGED FROM	DATE	CH. NO.	DRAFTS	CHECKER	ENG. APP.	MATERIAL	
TOLERANCES		SCALE:		TYPE & TEMPER		HEAT TREAT. SPEC.		DRAWN	
DEC. DIM. $\pm .005$		MAXIMUM ALLOWABLE TOLERANCES HAVE BEEN DETERMINED AND ANY DEVIATIONS WILL BE CAUSE FOR REJECTION.		ACTUATOR-MS-1174		DRAWN		CHECKED	
FRAC. DIM. $\pm \frac{1}{64}$		REMOVE ALL BURRS AND SHARP EDGES				ELEC. DES. APP.		MECH. DES. APP.	
ANGULAR DIM. $\pm$								FINAL APPROVAL	