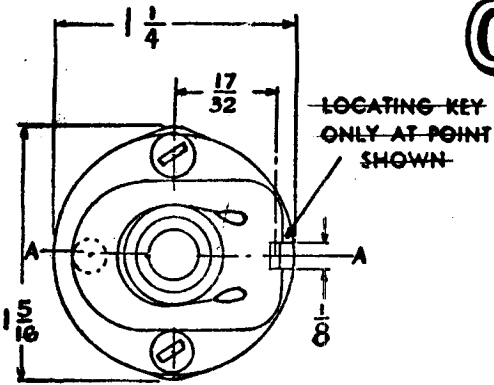


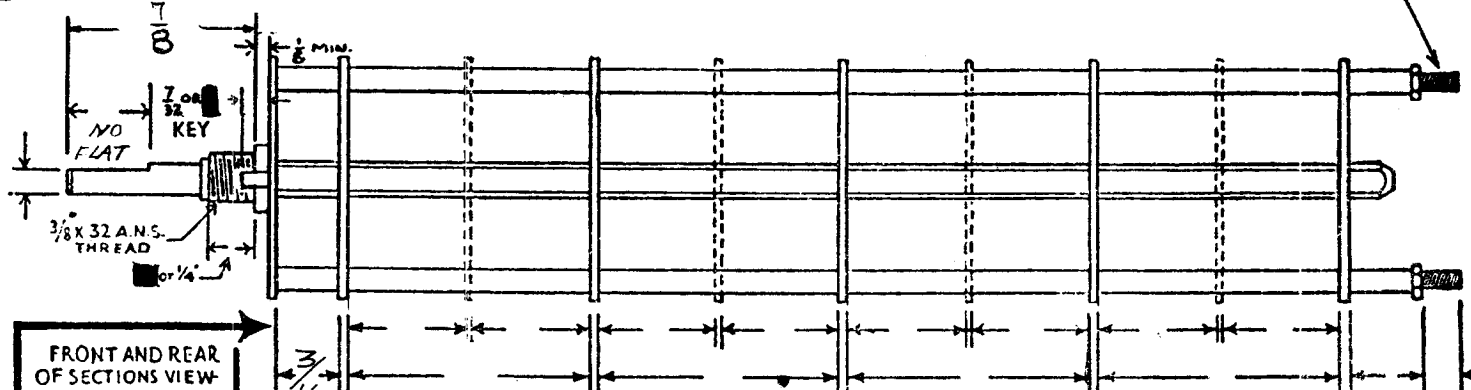
# OAK TYPE F SWITCH

SW-184

CUSTOMER'S PART NO. SN-184A

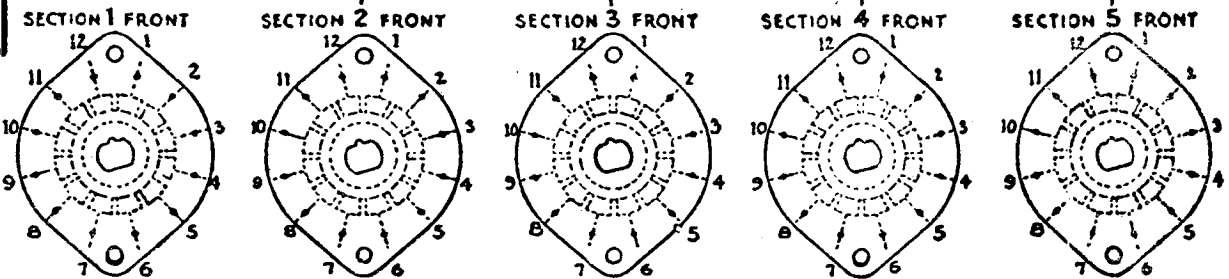


SHOW CUT AWAY PORTION OF FLAT IN BLACK AND GIVE ANGLE TO LINE A-A.  $\pm 3^\circ$  STANDARD RMA KNURLLED AND SLOTTED SHAFT ALSO AVAILABLE

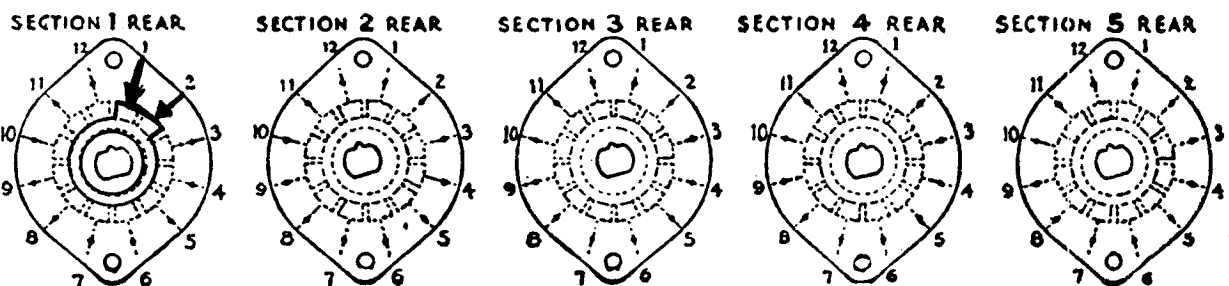
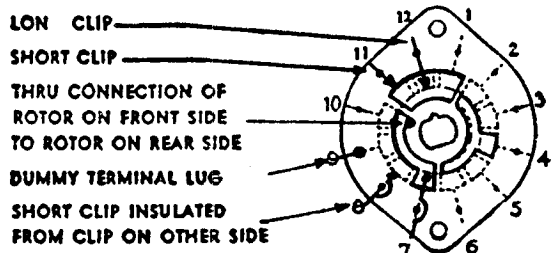


FRONT AND REAR OF SECTIONS VIEWED FROM FRONT OR KNOB END OF SWITCH IN EXTREME COUNTER-CLOCKWISE POSITION

NUMBER OF SECTIONS 1  
 NUMBER OF POSITIONS 2  
 ANGLE OF THROW 30° (30° OR 60°)



**SYMBOLS USED IN MARKING PRINT**



**CUSTOMER NOTES**

OUTLINE ROTOR BLADES AS SHOWN ABOVE WITH SWITCH IN EXTREME COUNTER-CLOCKWISE POSITION

SYM	DESCRIPTION	DATE	CHK	APP
A	CONTACT Moved From 3-11/15/56 PLK			AJJ

SWITCH, UPPER/LOWER SB.  
 GSB-1

**THE TECHNICAL MATERIAL CORPORATION**  
 MAMARONECK, NEW YORK

DATE 6-1-56 CHKD. HH  
 DRAWN ... APPD. A.J.J.  
 SHEET 1 OF 1 NO. SN-184A

**SPECIFICATIONS**

SHORTING TYPE CONTACTS  NON-SHORTING  IF NOT SPECIFIED SHORTING TYPE WILL BE SUPPLIED.  
 INSULATION:  $\frac{1}{16}$ " BAKELITE ;  $\frac{1}{8}$ " MYCALEX  SPECIFY IMPREGNATION IF REQUIRED.  
 FINISH REQUIREMENTS: COMMERCIAL ; ARMY ; NAVY ; SALT TEST (IF ANY GIVE DETAILS).  
 CONTACTS AND ROTORS: SILVER PLATED BRASS ; SOLID SILVER ALLOY ; IF NOT SPECIFIED SILVER PLATED BRASS WILL BE SUPPLIED.  
 MOUNTING HARDWARE: SUPPLY 1  $\frac{3}{8}$ " .32 NUTS 1/2 ACROSS FLATS; MATERIAL BR PLATING NK  
1  $\frac{3}{8}$ " INTERNAL TOOTH LOCKWASHER; MATERIAL BR PLATING NK

STAMP PART NUMBER SW-184 ON FRONT PLATE, YES  NO   
 (NUMBER)

CUSTOMER OAK MFG. CO.

1260 CLYBORN AVE., CHICAGO 10, ILL.