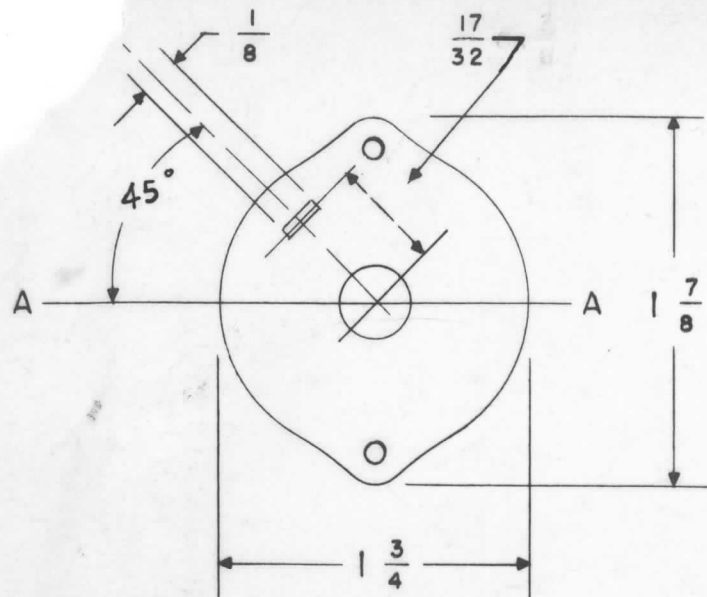
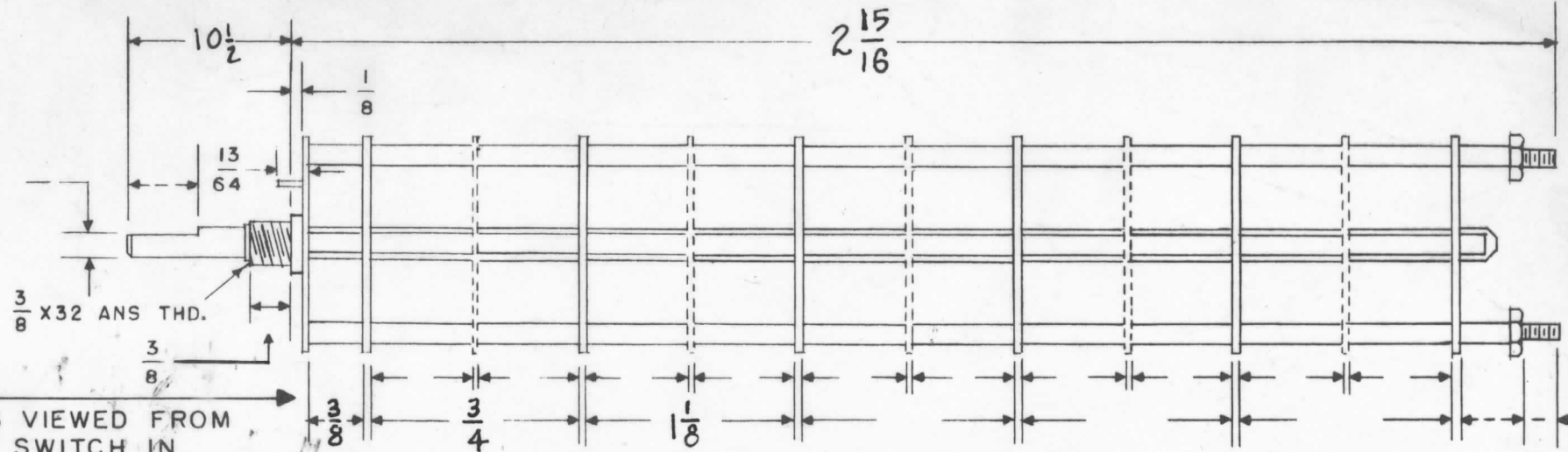


MS



FRONT & REAR SECTIONS VIEWED FROM FRONT OR KNOB END OF SWITCH IN EXTREME COUNTER CLOCKWISE POSITION



DRAW IN FLAT ON ABOVE SHAFT IN EXTREME COUNTER CLOCKWISE POSITION AND SHOW ANGLE IN REFERENCE TO LINE A-A

NUMBER OF SECTIONS 3
 NUMBER OF POSITIONS 5
 ANGLE OF THROW _____ (30° OR 60°)

PART NUMBER SW-175
 STAMP ON FRONT PLATE YES NO _____

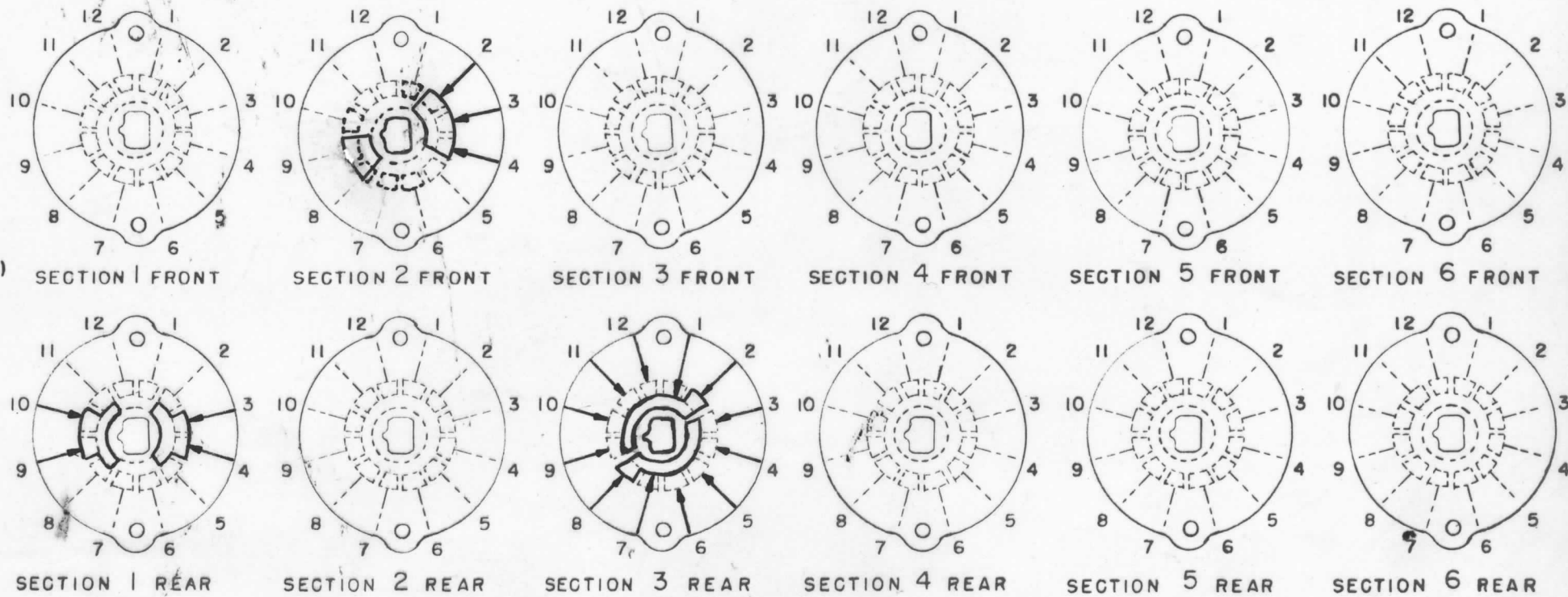
CONTACTS & ROTORS: (IF NOT SPECIFIED, SHORTING TYPE WILL BE SUPPLIED)
 SHORTING _____ NON SHORTING

MATERIAL: (IF NOT SPECIFIED, SILVER PLATED BRASS WILL BE SUPPLIED)
 SILVER PLATED BRASS SILVER ALLOY _____

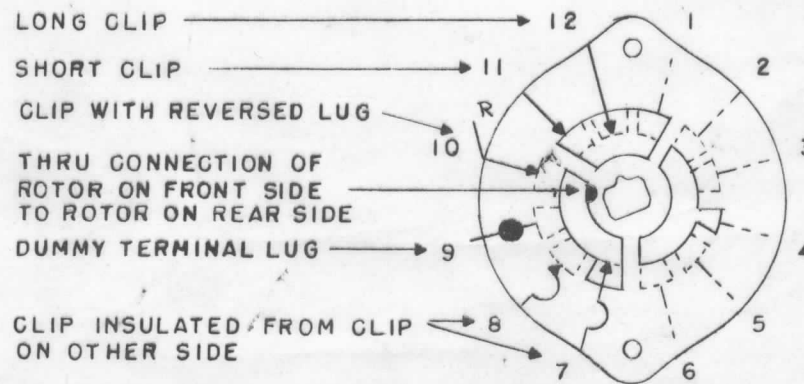
INSULATION: BAKELITE _____ CERAMIC _____
 SPECIFY IMPREGNATION IF REQUIRED _____

FINISH REQUIREMENTS: COMMERCIAL ARMY _____ NAVY _____
 SALT TEST (IF ANY GIVE DETAILS) _____

HARDWARE: SUPPLY
 _____ 3/8-32 NUTS _____ ACROS FLATS MAT. _____ PLATING _____
 _____ 3/8 INT TOOTH LOCKWASHERS MAT. _____ PLATING _____



SYMBOLS USED IN MARKING PRINT →



OUTLINE ROTOR BLADES AS SHOWN ABOVE WITH SWITCH IN EXTREME COUNTER-CLOCKWISE POSITION

OAK SWITCH SECTION - 1, 2 TYPE H
 SECTION - 3 " HC
 TYPE - H HC DH DHC QH
 QDH QHC QDHC
 (CIRCLE-DESIRED TYPE)

ISSUE	ITEM	CHANGED FROM	DATE	CH. NO.	DRAFTS	CHECKER	ENG. APP.
A	1	Redrawn No Revision	10/20/58			J.B.	[Signature]
TOLERANCES			SCALE:				
DEC. DIM. ±			MAXIMUM ALLOWABLE TOLERANCES HAVE BEEN DETERMINED AND ANY DEVIATIONS WILL BE CAUSE FOR REJECTION.				
FRAC. DIM. ±			REMOVE ALL BURRS AND SHARP EDGES				
ANGULAR DIM. ±							

REQ. PER UNIT	MODEL	PROJECT NO.	ASS'Y. NO.	DATE
1	RIF	1/C		
USED ON				

REQ. ITEM	PART NO.	DESCRIPTION	SYMBOL
THE TECHNICAL MATERIEL CORP. MAMARONECK, NEW YORK			
SWITCH, OSCILLATOR			
MATERIAL		DRAWN [Signature]	
TYPE & TEMPER		CHECKED [Signature]	
HEAT TREAT. SPEC.		FINAL APPROVAL [Signature]	
FINISH & SPEC. NO.		ELEC. DES. APP. MECH. DES. APP.	
		SW-175 A	