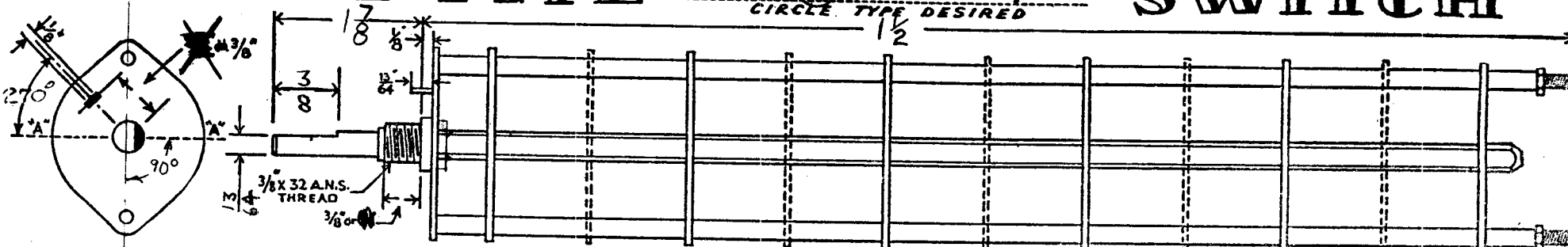


OAK TYPE (H. HC, DH, DHC, QH, GDH, QHC, ODHC.) SWITCH

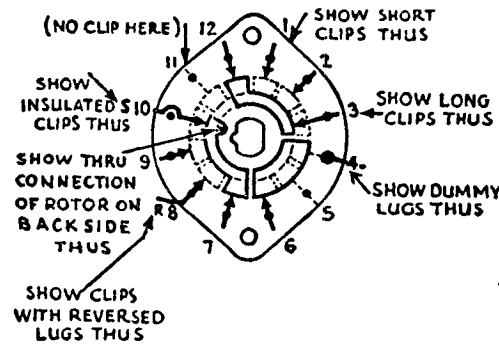
CIRCLE TYPE DESIRED ^{SW-172-0}



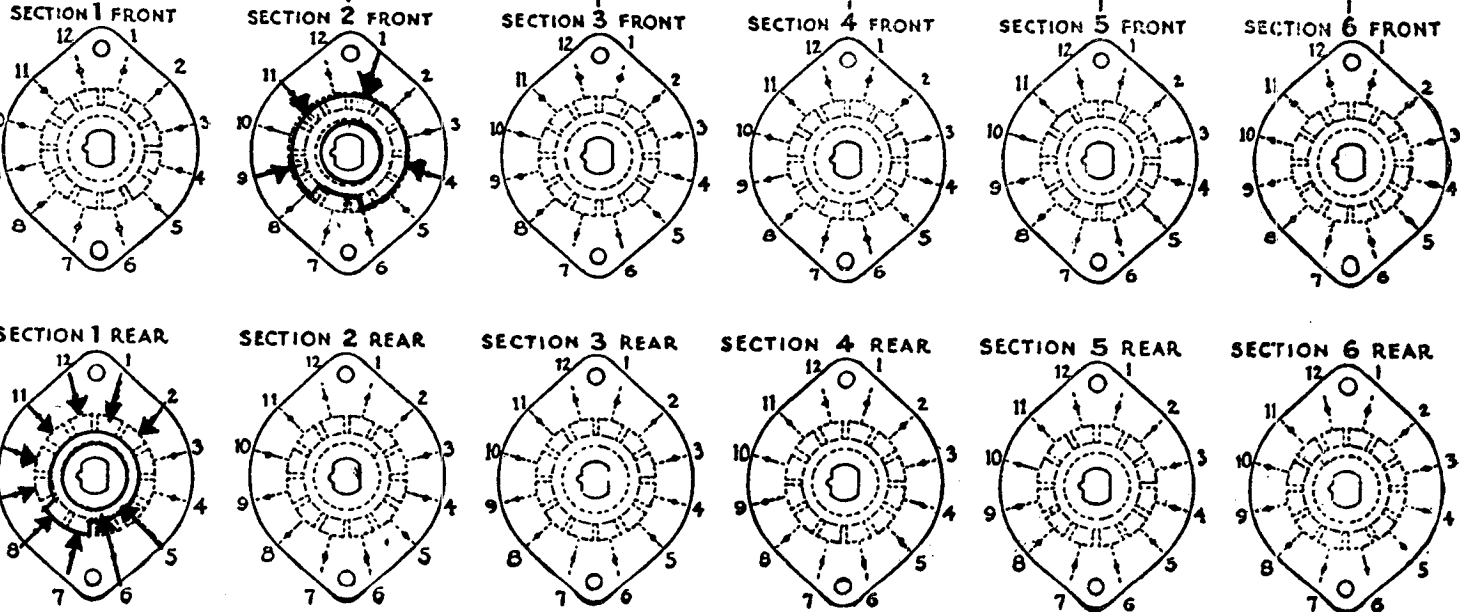
DRAW IN FLAT ON ABOVE SHAFT IN EXTREME COUNTER CLOCKWISE POSITION AND SHOW ANGLE IN REFERENCE TO LINE "A-A"

FRONT AND REAR OF SECTIONS VIEWED FROM FRONT OR KNOB END OF SWITCH IN EXTREME COUNTER-CLOCKWISE POSITION

TOTAL NO. OF SECTIONS 2
 NO. OF POSITIONS 4



OUTLINE ROTOR BLADES AS ABOVE IN EXTREME COUNTER-CLOCKWISE (LEFT) POSITION



FILL IN ALL DIMENSIONS INDICATED ABOVE AND CHECK ALL SPECIFICATIONS BELOW. REFER TO OAK ENGINEERING DATA SHEETS FOR STANDARD DIMENSIONS OF TYPE DESIRED AND FOR SPECIMEN OF THIS LAYOUT SHEET. TO OBTAIN MOST ECONOMICAL UNITS AND SHORTEST DELIVERY DATES PLEASE ADHERE TO THE STANDARDS AS CLOSELY AS POSSIBLE.

SPECIFICATIONS

SHORTING TYPE CONTACTS NON-SHORTING IF NOT SPECIFIED SHORTING TYPE WILL BE SUPPLIED.
 INSULATION: BAKELITE ; CERAMIC SPECIFY IMPREGNATION IF REQUIRED.
 FINISH REQUIREMENTS: COMMERCIAL ; ARMY ; NAVY ; SALT TEST (IF ANY GIVE DETAILS) _____
 CONTACTS AND ROTORS: SILVER PLATED BRASS ; SOLID SILVER ALLOY ; IF NOT SPECIFIED SILVER PLATED BRASS WILL BE SUPPLIED.
 MOUNTING HARDWARE: SUPPLY _____ 3/8" - 32 NUTS _____ ACROSS FLATS; MATERIAL _____ PLATING _____
 _____ 3/8" INTERNAL TOOTH LOCKWASHER; MATERIAL _____ PLATING _____
 STAMP PART NUMBER SW172 ON FRONT PLATE, YES NO
 (NUMBER)

CUSTOMER NOTES

NO DEVENT
 SHAFT NOT REMOVABLE

| | | | |
|---|----------|----------|--|
| DRIVER PLATE TANK BANDSWITCH | | S-202 | |
| THE TECHNICAL MATERIEL CORP MAMARONECK, NEW YORK | | | |
| JAS | ESS | SW-172 B | |
| DRAWN | CHECKED | | |
| APP | A.J.J. | | |
| ELEC. DES. | APPROVAL | | |

(RTF) (RTF-0) 270° ANGLE WAS 90°