

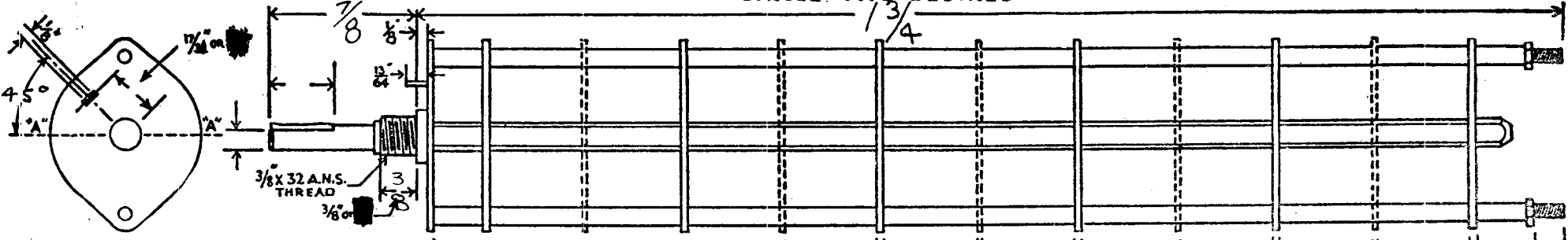
CUSTOMERS SW-170
PART NO.

THE TECHNICAL
MATERIEL CORP.

OAK MFG. CO.
1260 CLYBORN AVE., CHICAGO 10, ILL.

OAK TYPE (H, HC, DH, DHC, OH, GDH, OHC, ODHC) SWITCH

CIRCLE TYPE DESIRED

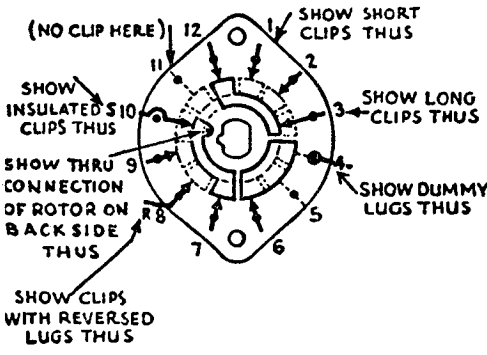


DRAW IN FLAT ON ABOVE SHAFT IN EXTREME COUNTER CLOCKWISE POSITION AND SHOW ANGLE IN REFERENCE TO LINE "A-A"

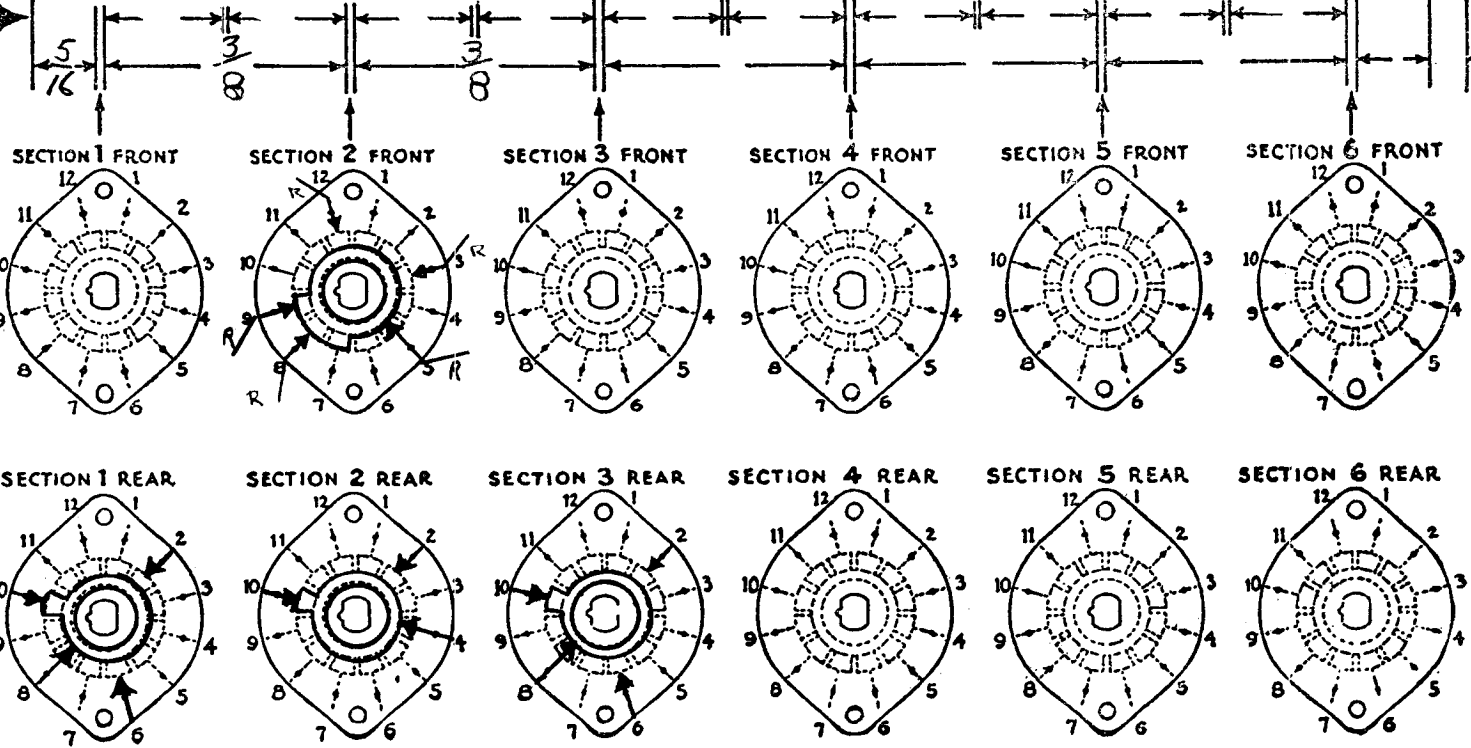
FRONT AND REAR OF SECTIONS VIEWED FROM FRONT OR KNOB END OF SWITCH IN EXTREME COUNTER-CLOCKWISE POSITION

TOTAL NO. OF SECTIONS 3

NO. OF POSITIONS 5



OUTLINE ROTOR BLADES AS ABOVE IN EXTREME COUNTER-CLOCKWISE (LEFT) POSITION



FILL IN ALL DIMENSIONS INDICATED ABOVE AND CHECK ALL SPECIFICATIONS BELOW. REFER TO OAK ENGINEERING DATA SHEETS FOR STANDARD DIMENSIONS OF TYPE DESIRED AND FOR SPECIMEN OF THIS LAYOUT SHEET. TO OBTAIN MOST ECONOMICAL UNITS AND SHORTEST DELIVERY DATES PLEASE ADHERE TO THE STANDARDS AS CLOSELY AS POSSIBLE.

SPECIFICATIONS

SHORTING TYPE CONTACTS NON-SHORTING IF NOT SPECIFIED SHORTING TYPE WILL BE SUPPLIED.

INSULATION: BAKELITE ; CERAMIC SPECIFY IMPREGNATION IF REQUIRED.

FINISH REQUIREMENTS: COMMERCIAL ; ARMY ; NAVY ; SALT TEST (IF ANY GIVE DETAILS) _____

CONTACTS AND ROTORS: SILVER PLATED BRASS ; SOLID SILVER ALLOY ; IF NOT SPECIFIED SILVER PLATED BRASS WILL BE SUPPLIED.

MOUNTING HARDWARE: SUPPLY 3/8" - 32 NUTS _____ ACROSS FLATS; MATERIAL _____ PLATING _____

3/8" INTERNAL TOOTH LOCKWASHER; MATERIAL _____ PLATING _____

STAMP PART NUMBER SW 170 ON FRONT PLATE, YES NO

(NUMBER) _____ NO. OF POSITIONS WAS 6

CUSTOMER NOTES

WAFER: 1+2 "H" TYPE - BAKELITE

WAFER: 3 "HC" TYPE - CERAMIC

DETENT: 60°

MODE		SWITCH	
THE TECHNICAL MATERIEL CORPORATION MAMARONECK, NEW YORK			
DATE DRAWN O.I.P.	CHECKED A.J.J.	SW-170-C	
ELEC. DES.	FINAL APP		

