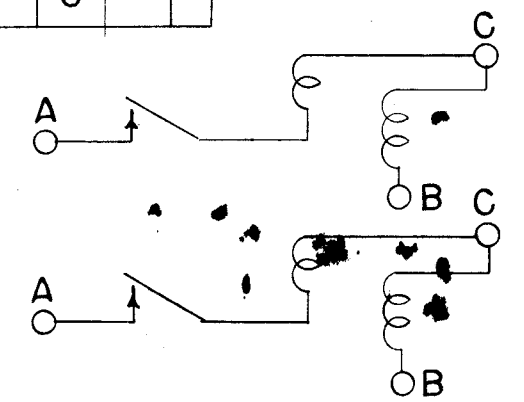


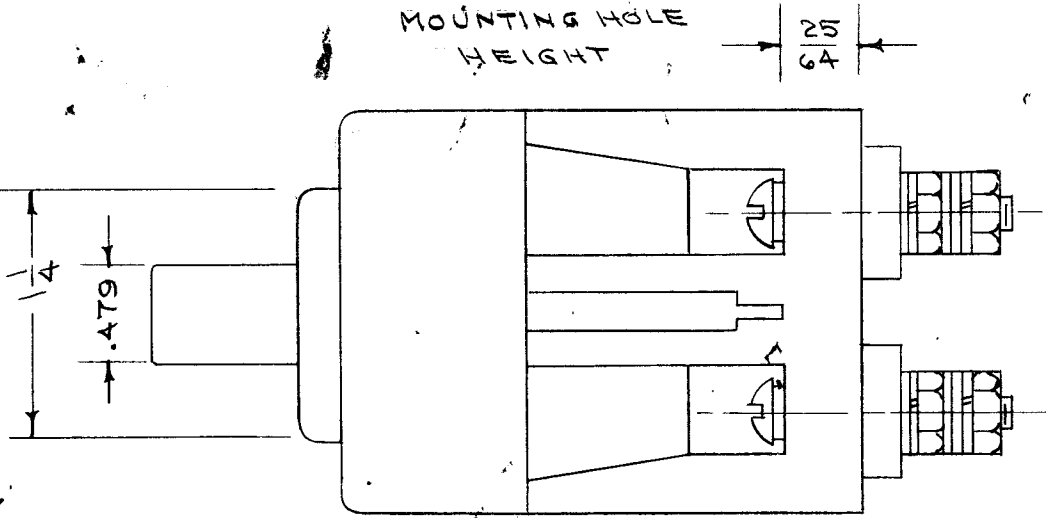
NOTE:
STAMP A, B, C
AS SHOWN

4 MTG. HOLES TAPPED 8-32

A TO B 250VAC 16A
A TO C 250VAC 32A
TIME DELAY CURVE 3,



C	1	S401-58 NO WAS 61593B	8-30-60	2875	cy	JCS	Jde
B	1	STAMPING NOTE ADDED	6/2/56	2	HL	SP	W
A	1	DIMENSIONS ADDED AND CORRECTED.	3/5/56	1	ESS	AS	A.J.J.
ISSUE	ITEM	CHANGED FROM	DATE	CH. NO.	DRAFTS	CHECKER	ENG. APP.
TOLERANCES			SCALE: S401-58 (61-593B, MG4)				
DEC. DIM. ±			MAXIMUM ALLOWABLE TOLERANCES HAVE BEEN DETERMINED AND ANY DEVIATIONS WILL BE CAUSE FOR REJECTION.				
FRAC. DIM. ±			REMOVE ALL BURRS AND SHARP EDGES				
ANGULAR DIM. ±							



1	TRTP				
REQ. PER UNIT	MODEL	PROJECT NO.	ASS'Y. NO.	DATE	USED ON

REQ. ITEM	PART NO.	DESCRIPTION	SYMBOL
#		THE TECHNICAL MATERIEL CORP. MAMARONECK, NEW YORK	
#		SWITCH, CIRCUIT BREAKER	
#		GPT-750	
#	#	QDD 6-8-55	Jde
#	#	TYPE & TEMPER	HEAT TREAT. SPEC.
#	#	DRAWN	CHEKED
#	#	FINISH & SPEC. NO.	ELEC. DES. APP.
#	#	MECH. DES. APP.	FINAL APPROVAL
#	#	10/26/53	A.J.J.
#	#	SW-164 C	