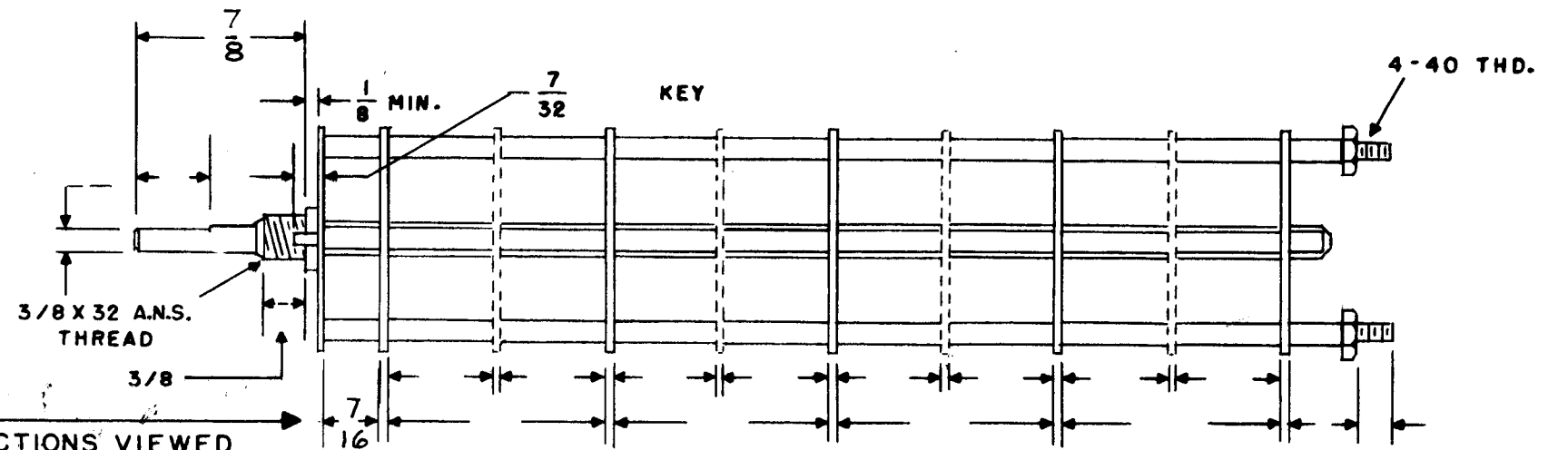
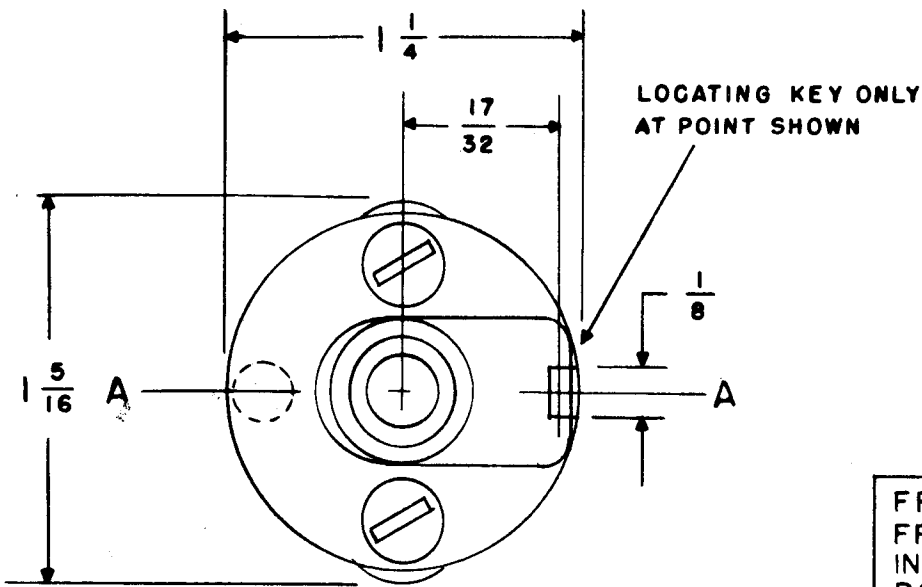


B  
SW-157



FRONT & REAR OF SECTIONS VIEWED FROM FRONT OR KNOB END OF SWITCH IN EXTREME COUNTER-CLOCKWISE POSITION

SHOW CUT AWAY PORTION OF FLAT IN BLACK AND GIVE ANGLE TO LINE A-A  $\pm 3^\circ$ . (STANDARD RMA KNURLED AND SLOTTED SHAFT ALSO AVAILABLE)

NUMBER OF SECTIONS 1  
 NUMBER OF POSITIONS 5  
 ANGLE OF THROW 30° (30° OR 60°)

PART NUMBER SW-157 B  
 STAMP ON FRONT PLATE YES X NO     

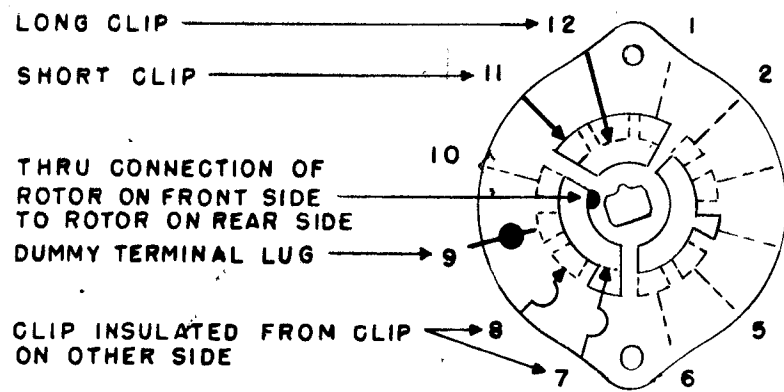
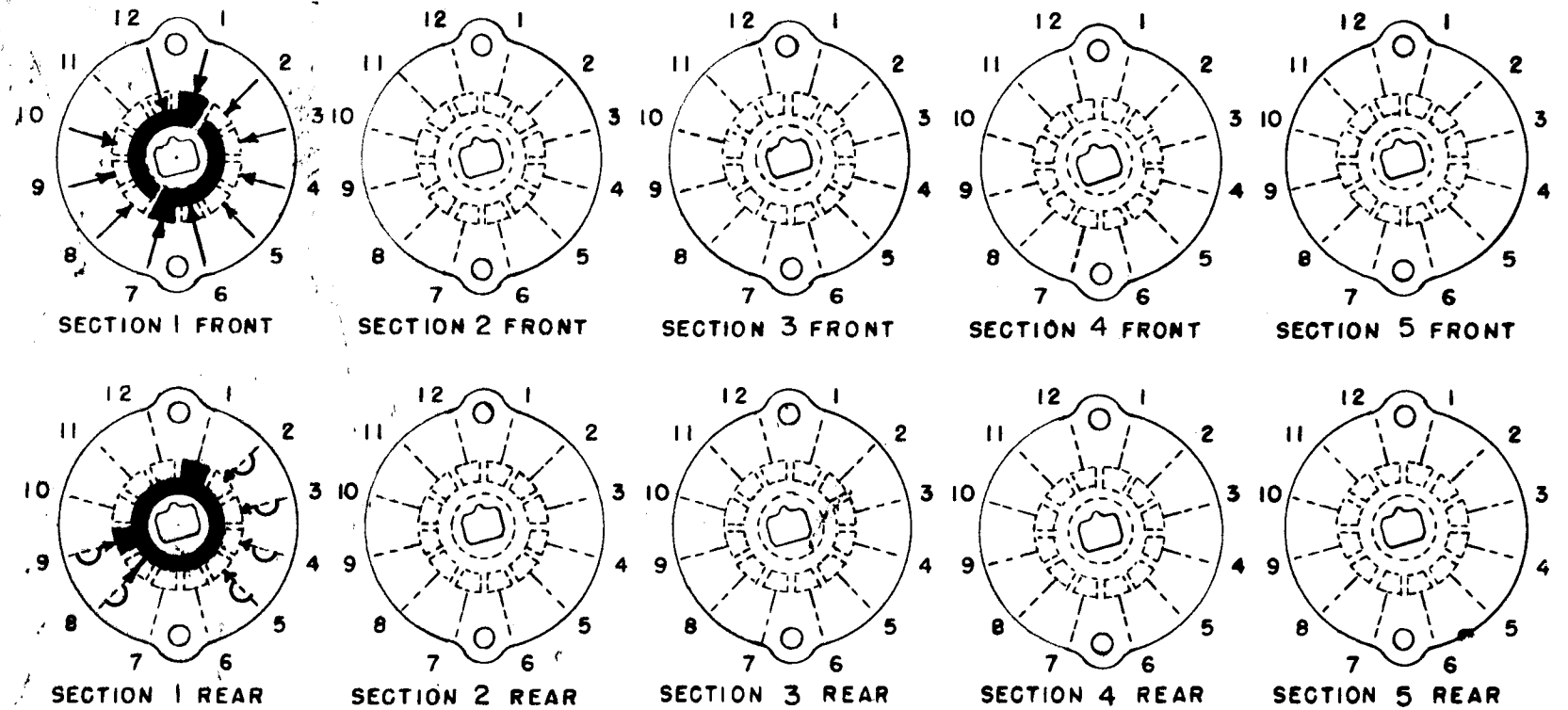
CONTACTS & ROTORS: (IF NOT SPECIFIED, SHORTING TYPE WILL BE SUPPLIED)  
 SHORTING      NON SHORTING X

MATERIAL: (IF NOT SPECIFIED, SILVER PLATED BRASS WILL BE SUPPLIED)  
 SILVER PLATED BRASS X SILVER ALLOY     

INSULATION: 1/16 BAKELITE X 1/8 MYCALEX       
 SPECIFY IMPREGNATION IF REQUIRED WAX

FINISH REQUIREMENTS: COMMERCIAL X ARMY      NAVY       
 SALT TEST (IF ANY GIVE DETAILS) 200 HOURS

HARDWARE: SUPPLY  
1 3/8-32 NUTS 1/2 ACROSS FLATS  
1 3/8 INTERNAL TOOTH LOCKWASHERS



SYMBOLS USED IN MARKING PRINT

OAK TYPE F SWITCH

OUTLINE ROTOR BLADES AS SHOWN ABOVE WITH SWITCH IN EXTREME COUNTER-CLOCKWISE POSITION

B	1	REDRAWN W/O CHGE	11/7/58				
ISSUE	ITEM	CHANGED FROM	DATE	CH. NO.	DRAFTS	CHECKER	ENG. APP.
TOLERANCES			SCALE: <u>AS</u>				
DEC. DIM. $\pm$		MAXIMUM ALLOWABLE TOLERANCES HAVE BEEN DETERMINED AND ANY DEVIATIONS WILL BE CAUSE FOR REJECTION. REMOVE ALL BURRS AND SHARP EDGES					
FRAC. DIM. $\pm$							
ANGULAR DIM. $\pm$							

1	NF-102	A-864	10-21-54
REQ. PER UNIT	MODEL	PROJECT NO.	ASS'Y. NO.
			DATE

REQ. ITEM	PART NO.	DESCRIPTION	SYMBOL
		THE TECHNICAL MATERIEL CORP. MAMARONECK, NEW YORK	
		SWITCH, ROTARY	
		NETWORK NF-102	
		10-21-54 C.D.D.	M.H.S. A.S.S.
		TYPE & TEMPER. HEAT TREAT. SPEC.	CHECKED
		FINISH & SPEC. NO.	ELEC. DES. APP. MECH. DES. APP.

SW-157 B