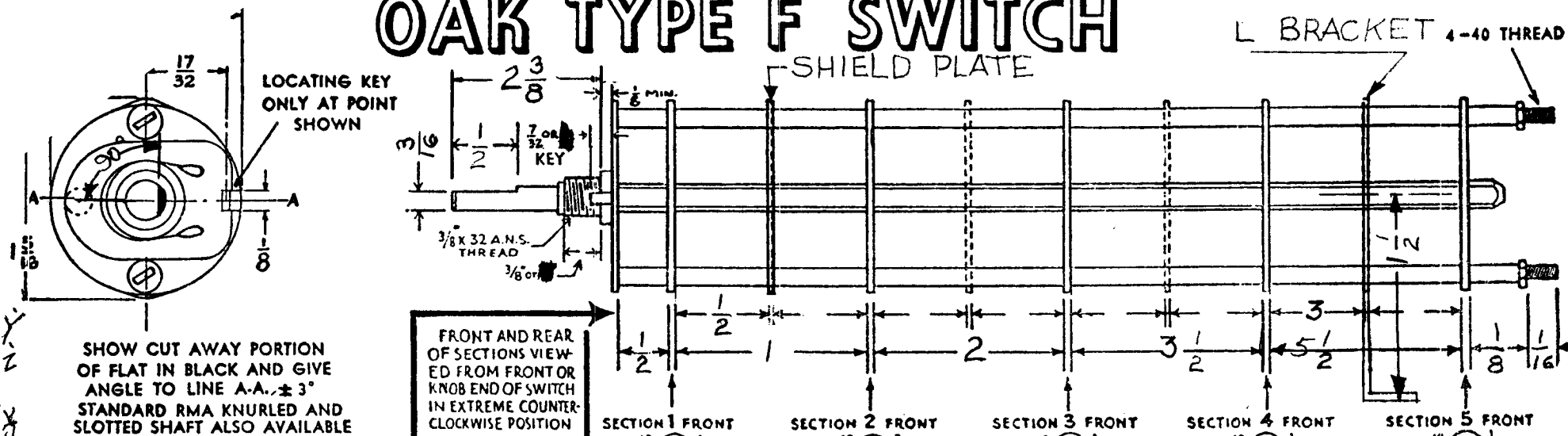


OAK MFG. CO.
 1260 CLYBORN AVE., CHICAGO 10, ILL.
 CUSTOMER THE TECHNICAL MATERIAL CORP.
 CORPORATION
 MAMARONECK, N.Y.

OAK TYPE F SWITCH

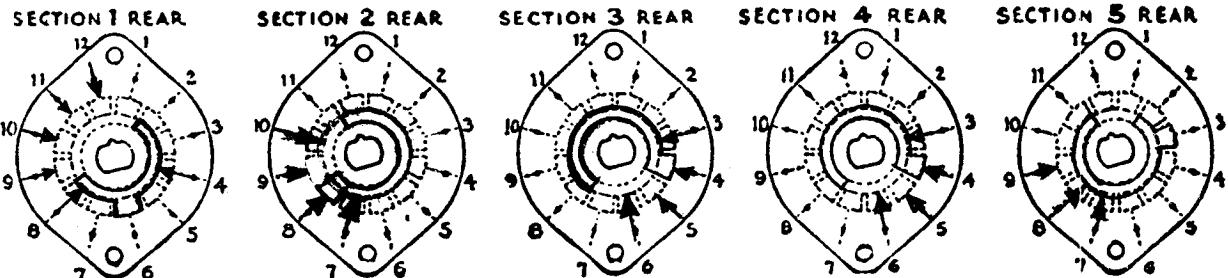
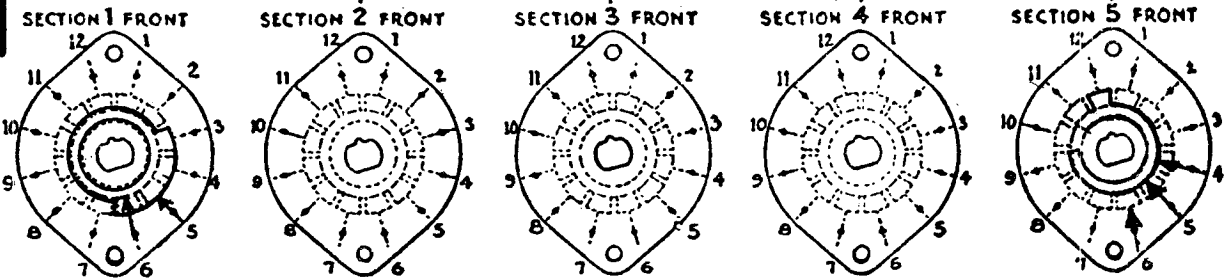
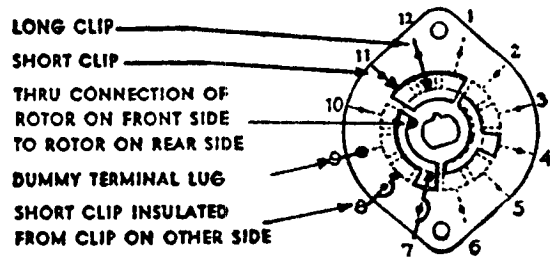
SW-146

L BRACKET 4-40 THREAD



NUMBER OF SECTIONS 5
 NUMBER OF POSITIONS 7
 ANGLE OF THROW 30 (30° OR 60°)

SYMBOLS USED IN MARKING PRINT



CUSTOMER NOTES

OUTLINE ROTOR BLADES AS SHOWN ABOVE WITH SWITCH IN EXTREME COUNTER-CLOCKWISE POSITION

SPECIFICATIONS

SHORTING TYPE CONTACTS NON-SHORTING IF NOT SPECIFIED SHORTING TYPE WILL BE SUPPLIED.
 INSULATION: 1/16" BAKELITE 1/8" MYCALEX SPECIFY IMPREGNATION IF REQUIRED.
 FINISH REQUIREMENTS: COMMERCIAL ; ARMY ; NAVY ; SALT TEST (IF ANY GIVE DETAILS) 200 HR.
 CONTACTS AND ROTORS: SILVER PLATED BRASS ; SOLID SILVER ALLOY ; IF NOT SPECIFIED SILVER PLATED BRASS WILL BE SUPPLIED.
 MOUNTING HARDWARE: SUPPLY 1 3/8" - 32 NUTS 1 ACROSS FLATS; MATERIAL BRASS PLATING NICKEL
1 3/8" INTERNAL TOOTH LOCKWASHER; MATERIAL STEEL PLATING NICKEL
 STAMP PART NUMBER SW-146 ON FRONT PLATE, YES NO
 (NUMBER)

BAND WIDTH CONTROL

USED ON VTR

ENG - G.T.O
 CHECK'D - P.L.K.
 SW-146
 DATE 6/11/54