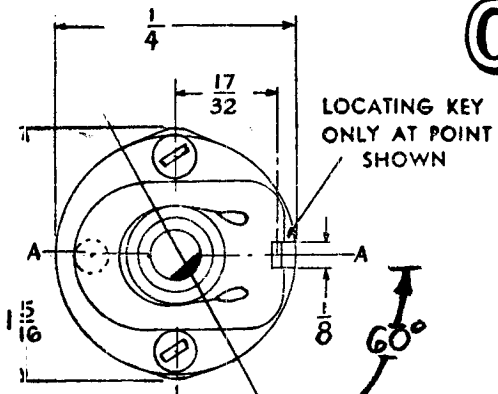


OAK MANUFACTURING CO. 1260 CLYBORN AVE., CHICAGO 10, ILL. CUSTOMER THE TECHNICAL MATERIE PART NO. SW-121A CORPORATION

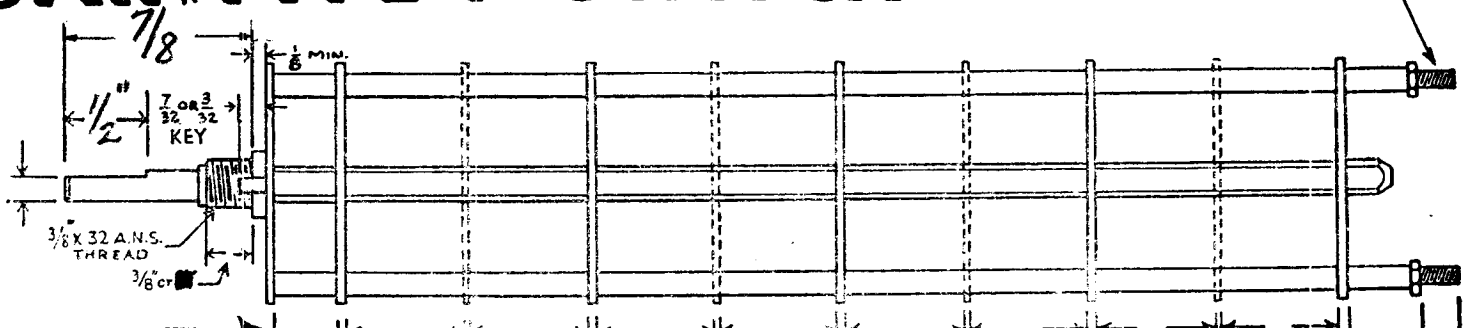
OAK TYPE F SWITCH

SW121A



LOCATING KEY ONLY AT POINT SHOWN

SHOW CUT AWAY PORTION OF FLAT IN BLACK AND GIVE ANGLE TO LINE A-A ± 3° STANDARD RMA KNURLED AND SLOTTED SHAFT ALSO AVAILABLE

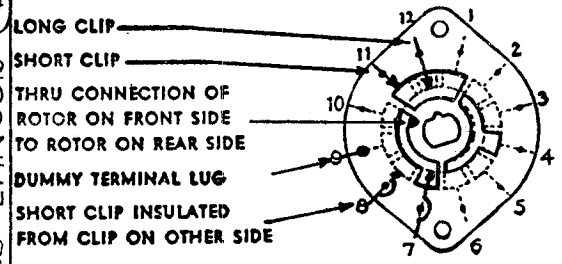


4-40 THREAD

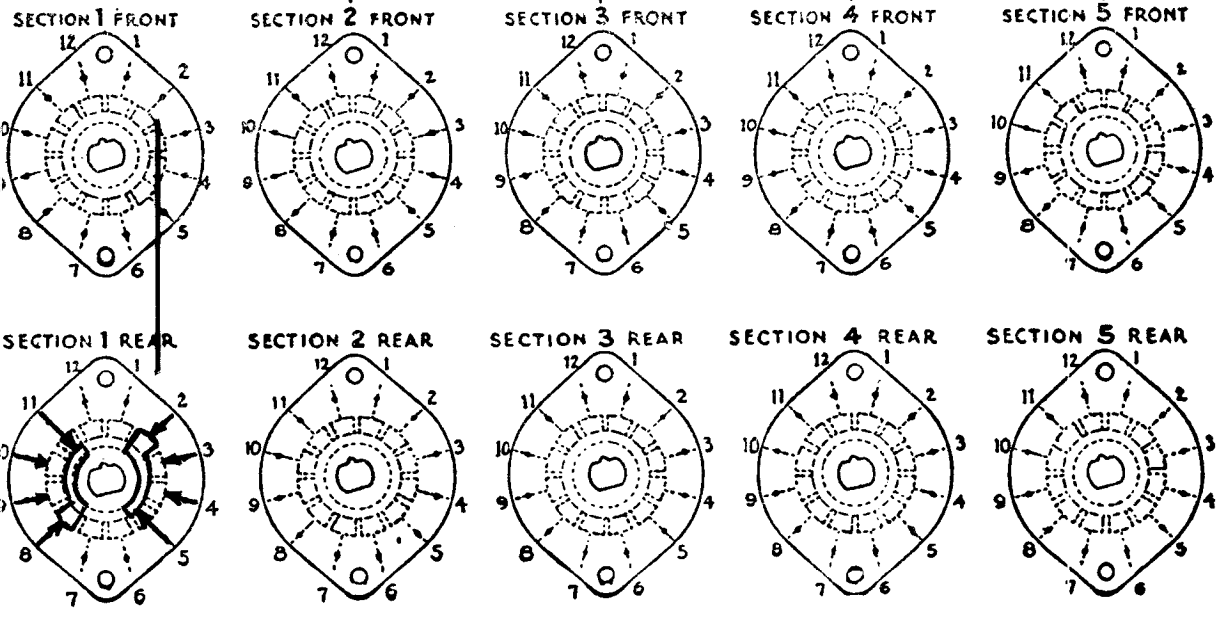
FRONT AND REAR OF SECTIONS VIEWED FROM FRONT OR KNOB END OF SWITCH IN EXTREME COUNTER-CLOCKWISE POSITION

NUMBER OF SECTIONS $\frac{1}{3}$
 NUMBER OF POSITIONS $\frac{1}{3}$
 ANGLE OF THROW 30° (30° OR 60°)

SYMBOLS USED IN MARKING PRINT



OUTLINE ROTOR BLADES AS SHOWN ABOVE WITH SWITCH IN EXTREME COUNTER-CLOCKWISE POSITION



REPLACES AES010

CUSTOMER NOTES

SW-121A

REPLACES 2
AES033

SPECIFICATIONS

SHORTING TYPE CONTACTS NON-SHORTING IF NOT SPECIFIED SHORTING TYPE WILL BE SUPPLIED.
 INSULATION: $\frac{1}{16}$ BAKELITE $\frac{1}{8}$ MYCALEX SPECIFY IMPREGNATION IF REQUIRED.
 FINISH REQUIREMENTS: COMMERCIAL ; ARMY ; NAVY ; SALT TEST (IF ANY GIVE DETAILS) 200 hr salt spray
 CONTACTS AND ROTORS: SILVER PLATED BRASS ; SOLID SILVER ALLOY ; IF NOT SPECIFIED SILVER PLATED BRASS WILL BE SUPPLIED.
 MOUNTING HARDWARE: SUPPLY 1 $\frac{3}{8}$ " . 32 NUTS 1/2" ACROSS FLATS; MATERIAL _____ PLATING _____
1 $\frac{3}{8}$ " INTERNAL TOOTH LOCKWASHER; MATERIAL _____ PLATING _____
 STAMP PART NUMBER SW-121 ON FRONT PLATE, YES NO
 (NUMBER)

108
 A.J.J. DATE 11/2/51