

OAK MANUFACTURING CO.  
1260 CLYBORN AVE., CHICAGO 10, ILL.

47592-F1

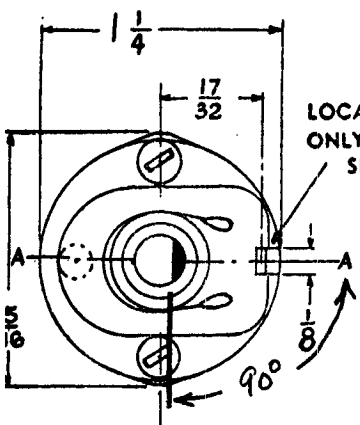
CUSTOMER

THE TECHNICAL MATERIAL CORPORATION  
MAMARONECK, N. Y.

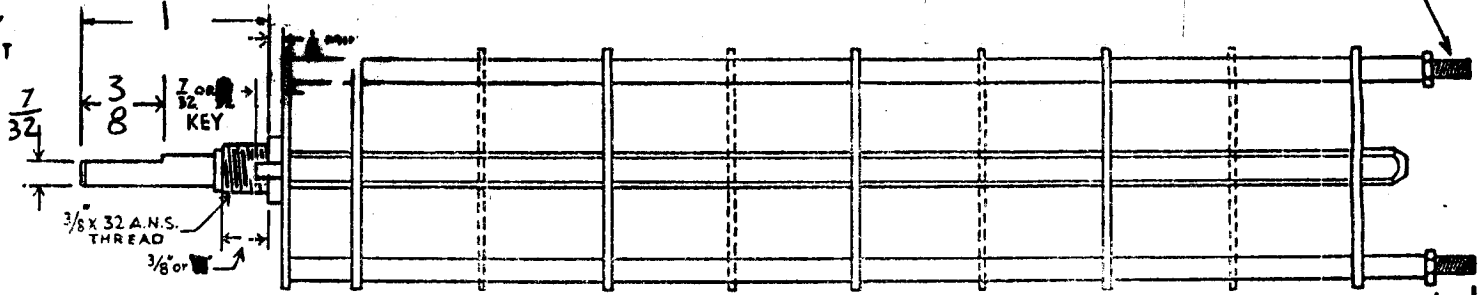
CUSTOMER'S PART NO. SW-111-C

# OAK TYPE F SWITCH

SW-111-D  
4-40 THREAD



LOCATING KEY ONLY AT POINT SHOWN

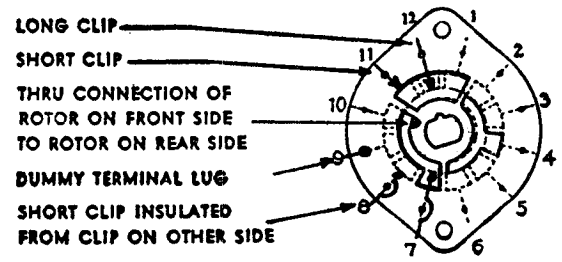


SHOW CUT AWAY PORTION OF FLAT IN BLACK AND GIVE ANGLE TO LINE A-A.  $\pm 3^\circ$   
STANDARD RMA KNURLED AND SLOTTED SHAFT ALSO AVAILABLE

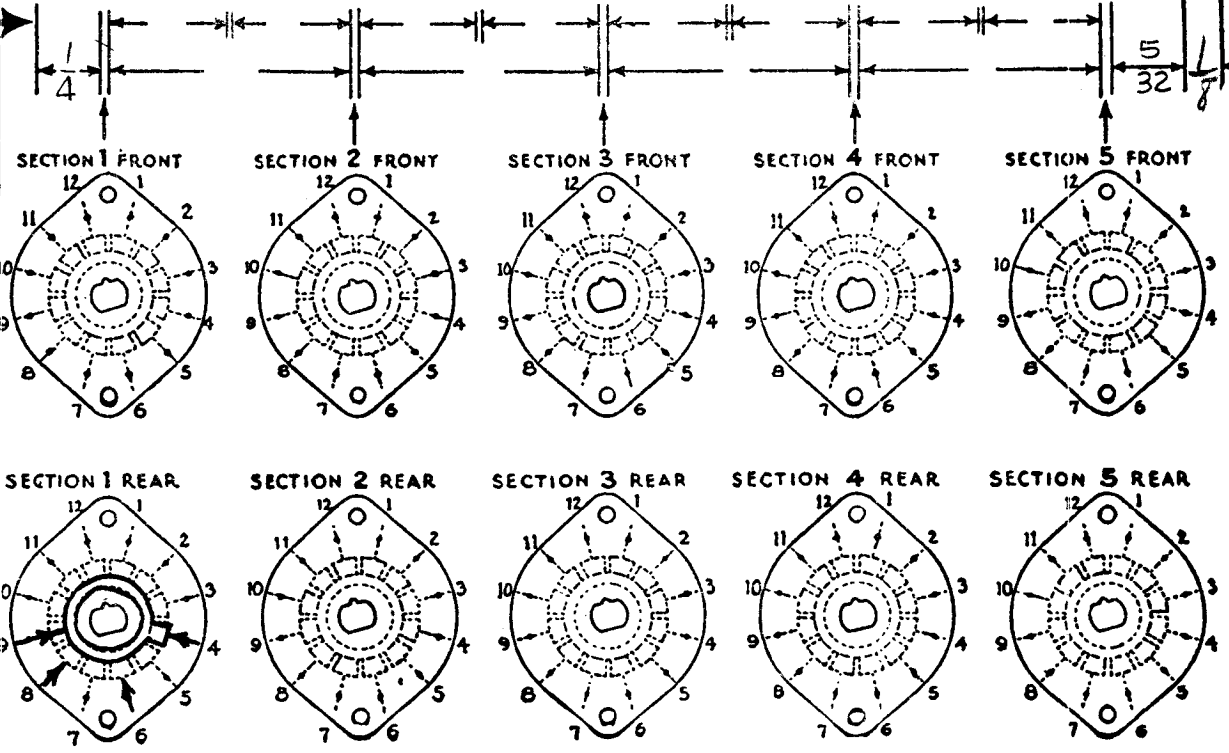
FRONT AND REAR OF SECTIONS VIEWED FROM FRONT OR KNOB END OF SWITCH IN EXTREME COUNTER-CLOCKWISE POSITION

NUMBER OF SECTIONS  $\frac{1}{3}$   
NUMBER OF POSITIONS  $\frac{3}{3}$   
ANGLE OF THROW  $60^\circ$  (30° OR 60°)

SYMBOLS USED IN MARKING PRINT



OUTLINE ROTOR BLADES AS SHOWN ABOVE WITH SWITCH IN EXTREME COUNTER-CLOCKWISE POSITION



### SPECIFICATIONS

SHORTING TYPE CONTACTS  NON-SHORTING  IF NOT SPECIFIED SHORTING TYPE WILL BE SUPPLIED.  
INSULATION:  $\frac{1}{16}$ " BAKELITE   $\frac{1}{8}$ " MYCALEX  SPECIFY IMPREGNATION IF REQUIRED.  
FINISH REQUIREMENTS: COMMERCIAL ; ARMY ; NAVY ; SALT TEST (IF ANY GIVE DETAILS) 200 HR SALT SPRAY  
CONTACTS AND ROTORS: SILVER PLATED BRASS ; SOLID SILVER ALLOY ; IF NOT SPECIFIED SILVER PLATED BRASS WILL BE SUPPLIED.  
MOUNTING HARDWARE: SUPPLY  $\frac{1}{2}$ "  $\frac{3}{8}$ " - 32 NUTS  $\frac{1}{2}$ " ACROSS FLATS; MATERIAL \_\_\_\_\_ PLATING \_\_\_\_\_  
 $\frac{1}{2}$ "  $\frac{3}{8}$ " INTERNAL TOOTH LOCKWASHER; MATERIAL \_\_\_\_\_ PLATING \_\_\_\_\_  
STAMP PART NUMBER SW-111- (NUMBER) \* ON FRONT PLATE, YES  NO

CUSTOMER NOTES					
D	1/4 DIM WAS	3/16	2.8218274	LWH	
C	* ADDED LATEST REV. LETTER	24/10806A-M		TR	WJG
B	REVISIONS	DEC. 1952	10824	G.D.	WJG
A	ON SWITCH	5/32 DIM. WAS	1/8	3/4/61	6492
SYM.	CHANGE	DATE	CH. NO.	DEPT.	CHECK

SW-111-D

8101-160

SUPERCEDES  $\rightarrow$  3/5/57  
AES007 DATE