

IF IT IS FOUND DESIRABLE TO CHANGE ANY TOLERANCE OR OTHER DETAIL SPECIFIED ON THIS DRAWING NOTIFY THE PURCHASER PROMPTLY.

STANDARD DRAWING

ST-104 D

MAXIMUM ALLOWABLE TOLERANCES HAVE BEEN DETERMINED AND DEVIATIONS WILL BE CAUSE FOR REJECTION. REMOVE ALL BURRS AND SHARP EDGES

REQ. PER UNIT

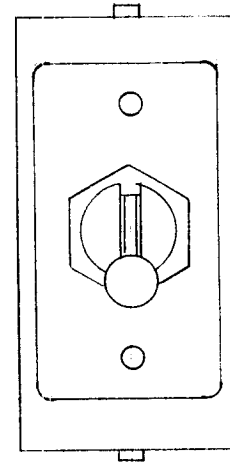
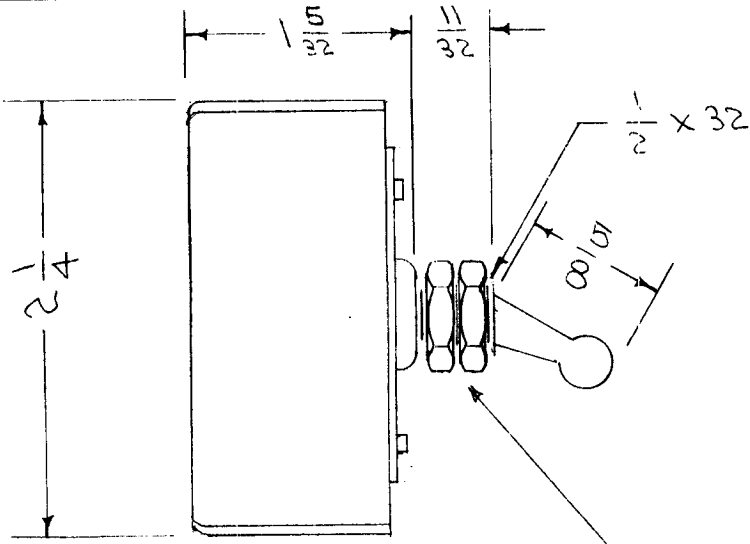
USED ON

MODEL

PROJECT NO.

ASS'Y. NO.

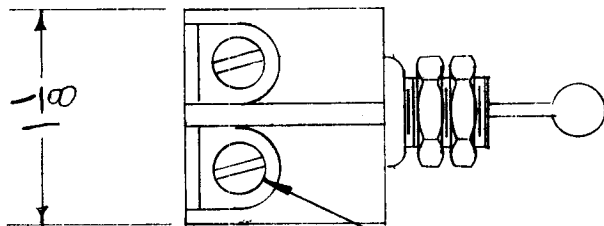
DATE



KEYWAY OPTIONAL
FACES "OFF" POSITION

DOUBLE POLE - SINGLE THROW
BALL LEVER
20 AMP. - 250 VOLT
1/2 HORSEPOWER - 250 VOLT
BAKELITE BASE

2 HEX LOCK NUTS
TO BE FURNISHED BY AHQH



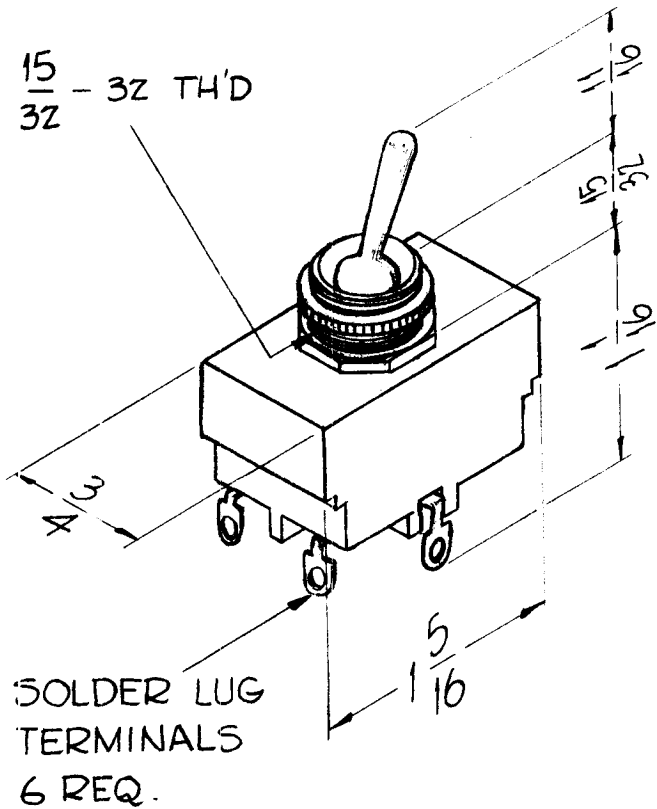
7-32 SCREW (4) PER SWITCH
FURNISHED BY MFR.

REF: THE ARROW HART BRENNAN ELEC. CO.
CAT. NO. 80421-181

REQ. ITEM	PART NO.	DESCRIPTION	SYMBOL
		THE TECHNICAL MATERIEL CORP. MAMARONECK, NEW YORK	
STOCK SIZE		SWITCH, TOGGLE	
MATERIAL		DP ST	
WEIGHT PER PC.		CDD. 8/25/55	
TYPE & TEMPER		AJJ WJC	
HEAT TREAT. SPEC.		DRAWN ELEC. DES. APP. MECH. DES. APP.	
FINISH & SPEC. NO.		CHECKED FINAL APPROVAL	
		AJJ	
		ST-104 D	

ISSUE	ITEM	CHANGED FROM	DATE	CN. NO.	DRAFTS	CHECKER	ENG. APP.
D	1	SCREW NOTE ADDED	8-14-53	9747	AK	WJC	WJC
C	1	LOCK RING DELETED	8-20-57	3	AK	WJC	WJC
B	1	LOCK RING ADDED TO HOWE.	4/17/56	2	AK	WJC	WJC
A	1	TITLE CORRECTED	7/26/56	1	AK	WJC	WJC

TOLERANCES		SCALE
ALL OTHERS	DEC. DIM. ± FRAC. DIM. ± ANGULAR DIM. ±	DRILL, PUNCH, COMMERCIAL STOCK SIZES AND MANUFACTURERS TOLERANCES ARE NOT INCLUDED.



REQ. PER UNIT	USED ON			ST-105
	MODEL	ASS'Y. NO.	DATE	
1	GPT40K		12-14-60	

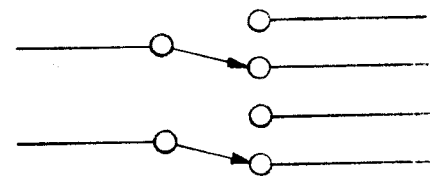
CIRCUIT-DPDT

2 Positions-on-on (Normally Closed, Mom. Closed Opposite End)

RATINGS-

3A-250 VAC
6A-125 VAC
1/6 HP 120-240 VAC

Base-Molded Phenolic (Black)
Lever-Bat Type, Aluminum
Sleeve-15/32-32 thd, Slotted, Aluminum
One Hex Nut & One Knurled Nut Supplied By Manufacturer.



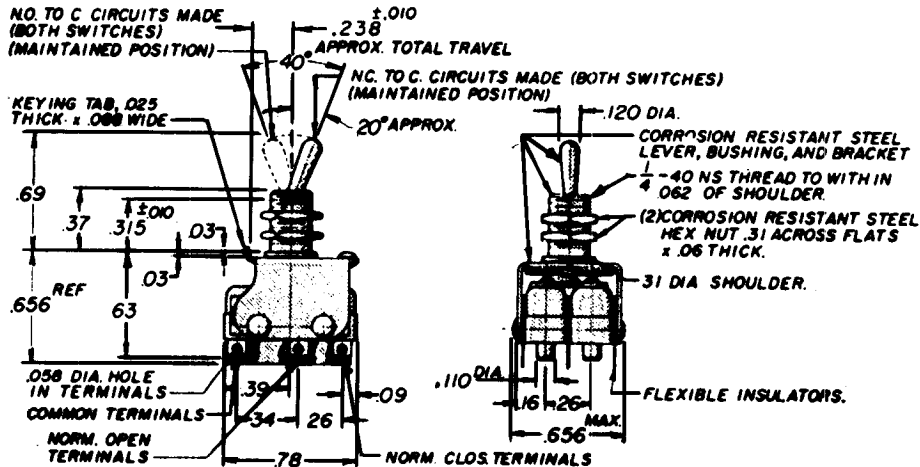
CIRCUIT DIAGRAM

Ref.-Arrow-Hart & Hegeman Electric Co. #83040

ISSUE	ITEM	CHANGED FROM	DATE	CH. NO.	DRAFTS	CHECKER	ENG. APP.	REQ.	ITEM	PART NO.	DESCRIPTION	SYMBOL			
											THE TECHNICAL MATERIEL CORP. MAMARONECK, NEW YORK SWITCH, TOGGLE: ON-MOM-ON				
										STOCK SIZE					
										MATERIAL					
											<i>Feb</i> <i>file</i> 				
											DRAWN CHECKED FINAL APPR VAL				
												ST-105			
TOLERANCES			SCALE:					TYPE & TEMPER		HEATTREAT.SPEC.		ELEC. DES. APP		MECH. DES. APP	
DEC. DIM. ± FRAC. DIM. ± ANGULAR DIM. ±			MAXIMUM ALLOWABLE TOLERANCES HAVE BEEN DETERMINED AND ANY DEVIATIONS WILL BE CAUSE F R REJECTION. REMOVE ALL BURRS AND SHARP EDGES												

STANDARD DRAWING

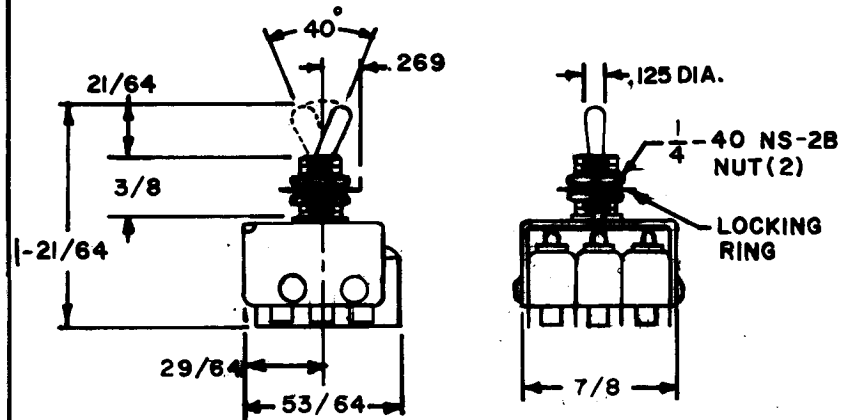
THE CONTENTS OF THIS DRAWING ARE THE EXCLUSIVE PROPERTY OF THE TECHNICAL MATERIEL CORP. ITS UNAUTHORIZED USE OR REPRODUCTION IN WH LE R IN PART IS STRICTLY FORBIDDEN.				REQ. PER UNIT	USED ON			ST 106	A
				1	MODEL	ASS'Y. NO.	DATE		
				HFS-1	3100 DECK	8-15-62			
TMC P/N	MFG	MFG P/N	DETAIL	CONTACT RATING					
ST 106	A	6 AT 3	A	5A @ 125/250 VAC RESISTIVE					
ST 106-2	B	A3-48-103	B	4A @ 125/250 VAC RESISTIVE					



UNLESS OTHERWISE SPECIFIED TOLERANCES ARE -

ONE PLACE	±.030
TWO PLACE	±.015
THREE PLACE	±.005

**DPDT
DETAIL A**



**3PDT
DETAIL B**

**CONTACT MATERIAL — SILVER
HARDWARE SUPPLIED BY MFG.:**

A. S401-18
B. S401-433

REQ.	ITEM	PART NO.	J. STRUMER DESCRIPTION			SYMBOL
STOCK SIZE						
MATERIAL						
TYPE & TEMPER HEATTREAT. SPEC.						
FINISH & SPEC. NO.						
UNLESS OTHERWISE SPECIFIED: DIMENSIONS ARE IN INCHES TOLERANCES ON FRAC. ± 1/64 DEC. ± .005 ANGLES ± 1/2°		SCALE: MAXIMUM ALLOWABLE TOLERANCES HAVE BEEN DETERMINED AND ANY DEVIATIONS WILL BE CAUSE FOR REJECTION. REMOVE ALL BURRS AND SHARP EDGES		W.A.F. <i>[Signature]</i> DRAWN <i>[Signature]</i> CHECKED <i>[Signature]</i> FINAL APPROVAL <i>[Signature]</i> ST 106		A