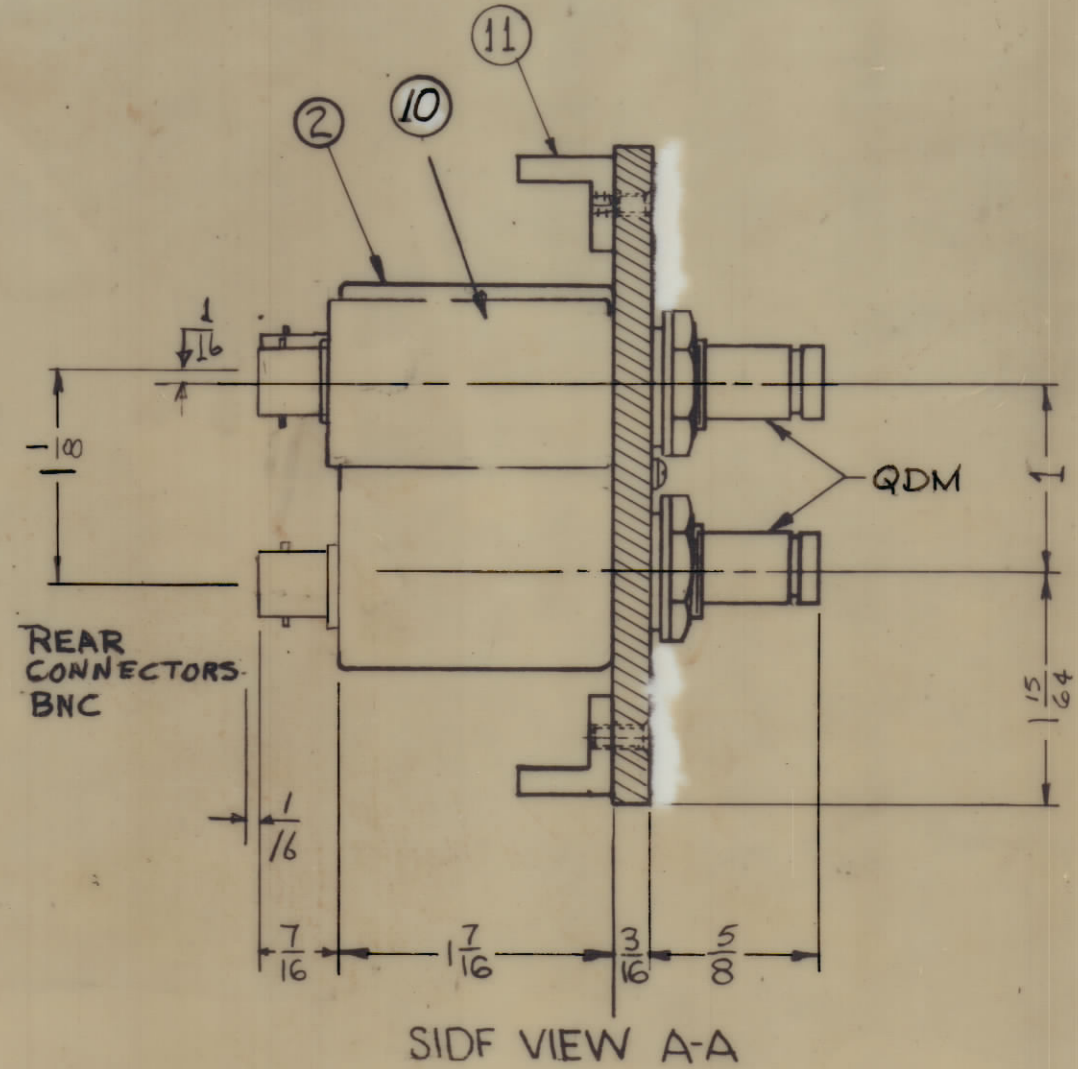
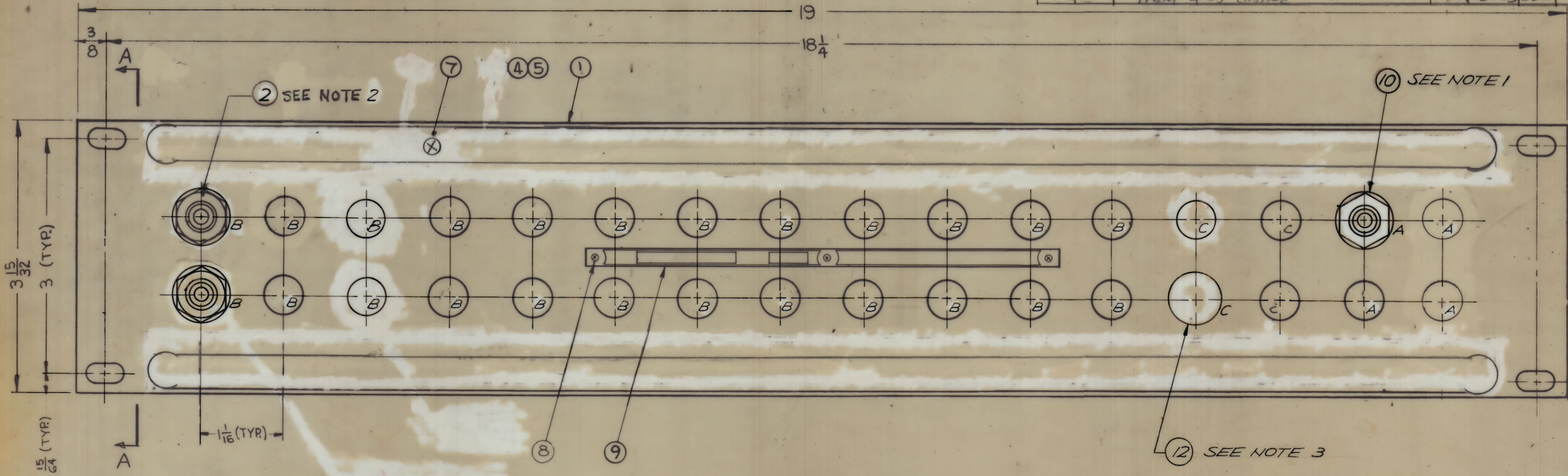


ZONE	SYM	DESCRIPTION	DATE	E.M.N. NO.	DRAFT	CHKD	APPD

ZONE	SYM	DESCRIPTION	DATE	E.M.N. NO.	DRAFT	CHKD	APPD
X		EXP. RELEASE	6/6/69		KH		
Ø		ORIGINAL RELEASE FOR PRODUCTION	6/9/69		GE		
A		ITEM 3 & ITEM 6 DELETED DICT. UPDATED ITEM 4 & 5 CHANGE	5-10-84	22063	6DL		



Note: Switch mounting information.
 1. A- MOUNT item 10 4 PLACES
 2. B MOUNT item 2 12 PLACES
 3. C INSERT item 12 4 PLACES

REQ'D	ITEM	PART NUMBER	DESCRIPTION	SYMBOL
4	12	HB-101-11-G	PLUG, BUTTON	
2	11	PM-486	BRACE, PANEL	
4	10	JJ247	CONN. RECER QDM TO BNC	
1	9	NP878	NAMEPLATE, IDENTIFICATION	
3	8	SFBP02565N3	SCREW, THREAD CUTTING	
12	7	SCFPO632BN5	SCREW, MACHINE	
12	6		SCREW, MACHINE	
2	5	PX 396-17	GUARD, TAB	
2	4	PR 101-17	TAP, PAPER	
	3			
12	2	SW-311	SWITCH, JACK ASSEMBLY	
1	1	MS-2975	MACHINING, FRONT PANEL	

MATERIAL		THE TECHNICAL MATERIEL CORP.	
ALUMINUM 19x3 15/32 x 3/16		MAMARONECK, NEW YORK	
FINISH S115 TMC SMOOTH GREY ENAMEL		TITLE PANEL, PATCH R.F. SWITCHING	
UNLESS OTHERWISE SPECIFIED DIMENSIONS ARE IN INCHES AND INCLUDE CHEMICALLY APPLIED OR PLATED FINISHES		CHECKED K.H. DATE 6/6/69	FINAL APPROVAL W.H. SPAM DATE 6/9/69
DECIMALS .X ± .05 .XX ± .01 .XXX ± .005		ELECT. DES. DATE 6/6/69	
FRACTIONS ± 1/64 ANGLES ± 0° 30'		MECH. DES. DATE	
TOLERANCES		SPP-PA-133 A	

Q'TY./UNIT	MODEL USED ON	ASS'Y. NO.
DO NOT SCALE		

NOTES
 THE CONTENTS OF THIS DRAWING ARE THE EXCLUSIVE PROPERTY
 OF THE TECHNICAL MATERIEL CORP. ITS UNAUTHORIZED USE OR
 REPRODUCTION IN WHOLE OR IN PART IS STRICTLY FORBIDDEN.

SPP-PA-133 A

MS 3032