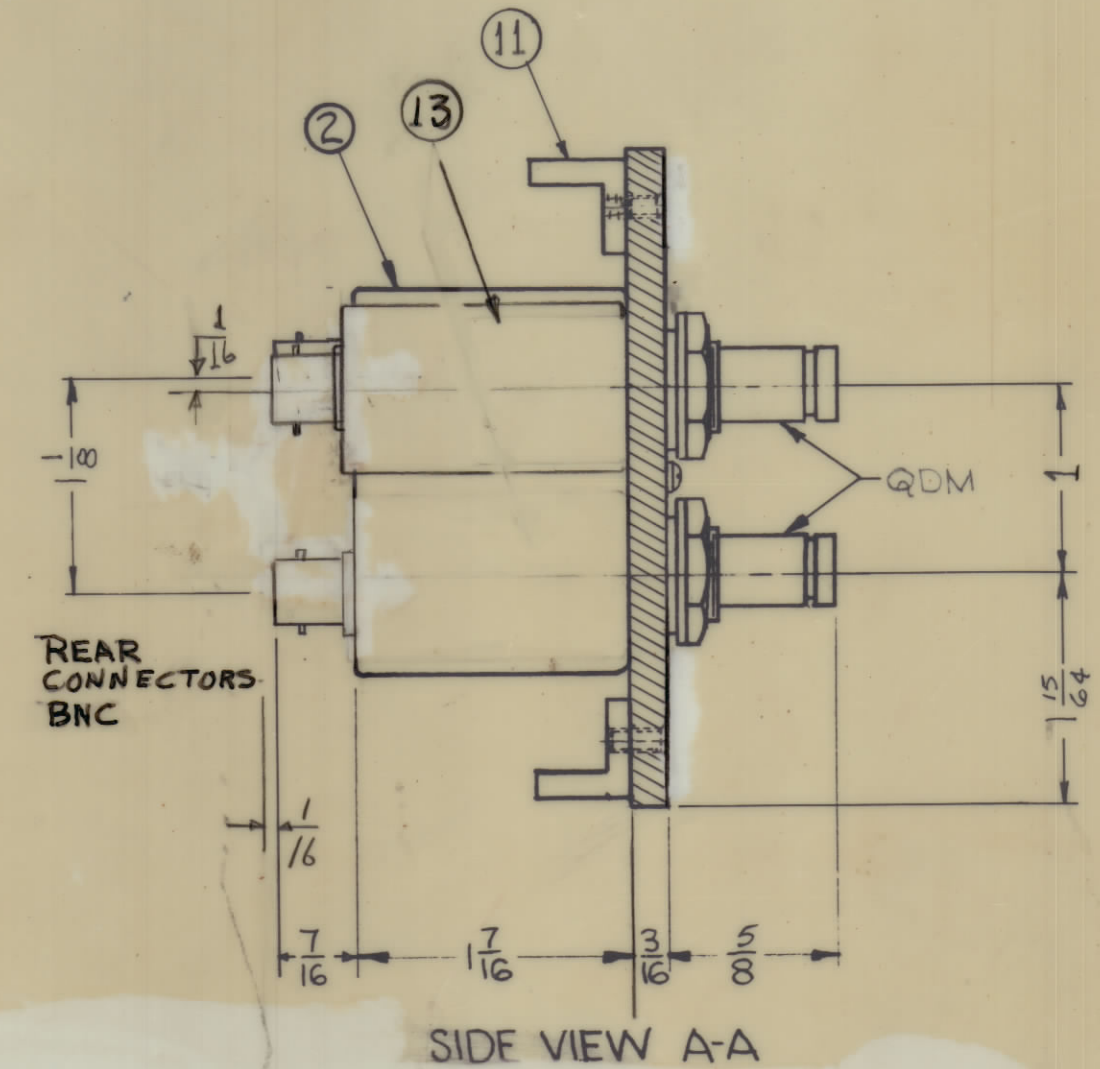
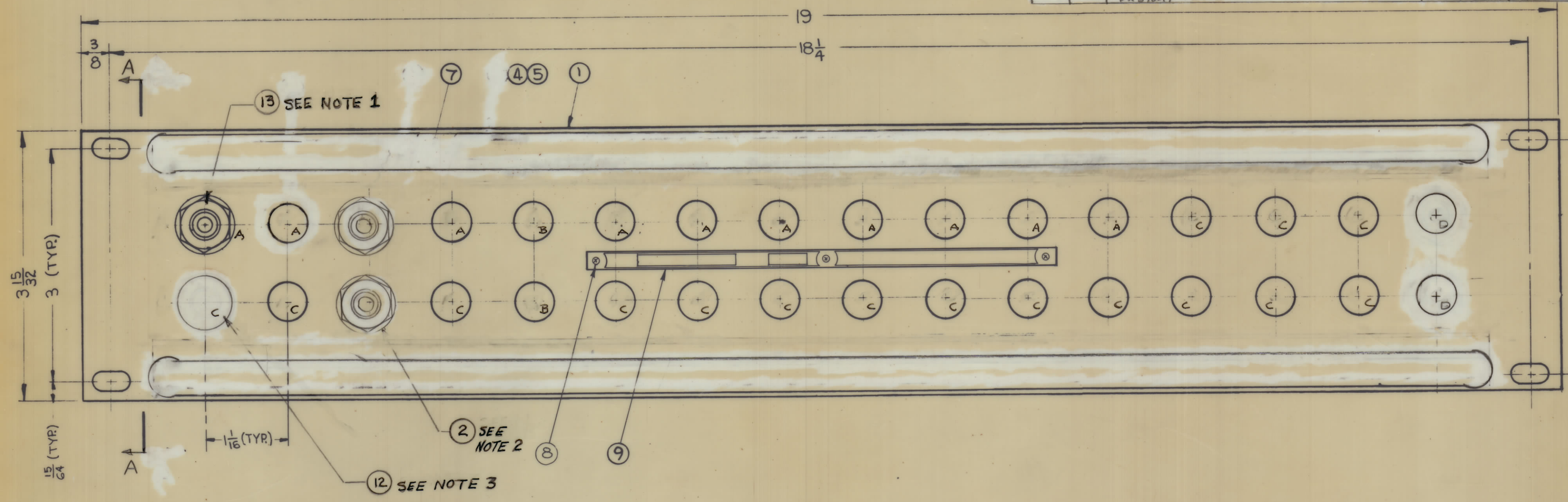


REVISIONS						
ZONE	SYM	DESCRIPTION	DATE	E.M.N. NO.	DRAFT	CHKD

REVISIONS						
ZONE	SYM	DESCRIPTION	DATE	E.M.N. NO.	DRAFT	CHKD



- Note: Switch mounting information.
1. A. MOUNT item (13) 10 PLACES
 2. B. MOUNT item (2) 2 PLACES
 3. C. INSERT item (12) 18 PLACES
 4. D. MOUNT item (10) 2 PLACES

NOTES

SPP-PA-128		ASS'Y. NO.
QTY./UNIT	MODEL USED ON	CODE
DO NOT SCALE		
THE CONTENTS OF THIS DRAWING ARE THE EXCLUSIVE PROPERTY OF THE TECHNICAL MATERIEL CORP. ITS UNAUTHORIZED USE OR REPRODUCTION IN WHOLE OR IN PART IS STRICTLY FORBIDDEN.		

REQ'D.	ITEM	PART NUMBER	DESCRIPTION	SYMBOL
10	13	SW 346	SWITCH, JACK ASSY, RES.	
16	12	HB-101-11-G	PLUG, BUTTON	0
2	11	PM-486	BRACE, PANEL	
2	10	JJ247	CONN. RECEPTOR QDM TO BNC	
1	9	NP878	NAMEPLATE, IDENTIFICATION	
3	8	SFBPO256SN3	SCREW, THREAD CUTTING	
12	7	SCFPO632BN5	SCREW, MACHINE	
	6			
2	5	PX 396-17	GUARD, TAB	
2	4	PR-101-17	TAP, PAPER	
	3			
2	2	SW-311	SWITCH, JACK ASSEMBLY	
1	1	MS-2975	MACHINING, FRONT PANEL	

MATERIAL ALUMINUM 19 x 3 15/32 x 3/16 THK.		THE TECHNICAL MATERIEL CORP. MAMARONECK, NEW YORK	
FINISH S115 TMC SMOOTH GREY ENAMEL		TITLE PANEL, PATCH R.F. SWITCHING	
CHECKED	DATE 12-6-67	FINAL APPROVAL	DATE 1/1/68
ELECT. DES.	DATE 12-6-67	SPP-PA-128 B	
MECH. DES.	DATE 12-6-67	SHEET	REV. TR.

SPP-PA-128 B

P 670-17
PR10417
MS3032