

4

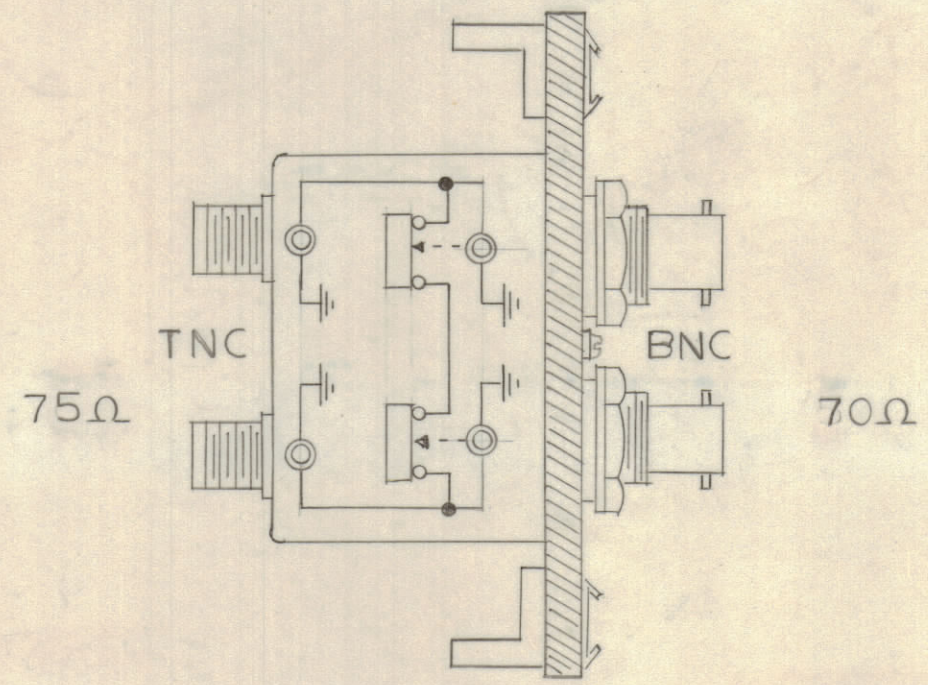
3

2

1

REVISIONS						DATE	APPROVED
E.M.N.NO	DRAFT	CHKD	ZONE	LTR	DESCRIPTION		
	CDD		D3	A	75Ω WAS 70Ω - 70Ω WAS 50Ω	10-5-70	<i>gfm</i>

DETAIL "A-A"



D

D

C

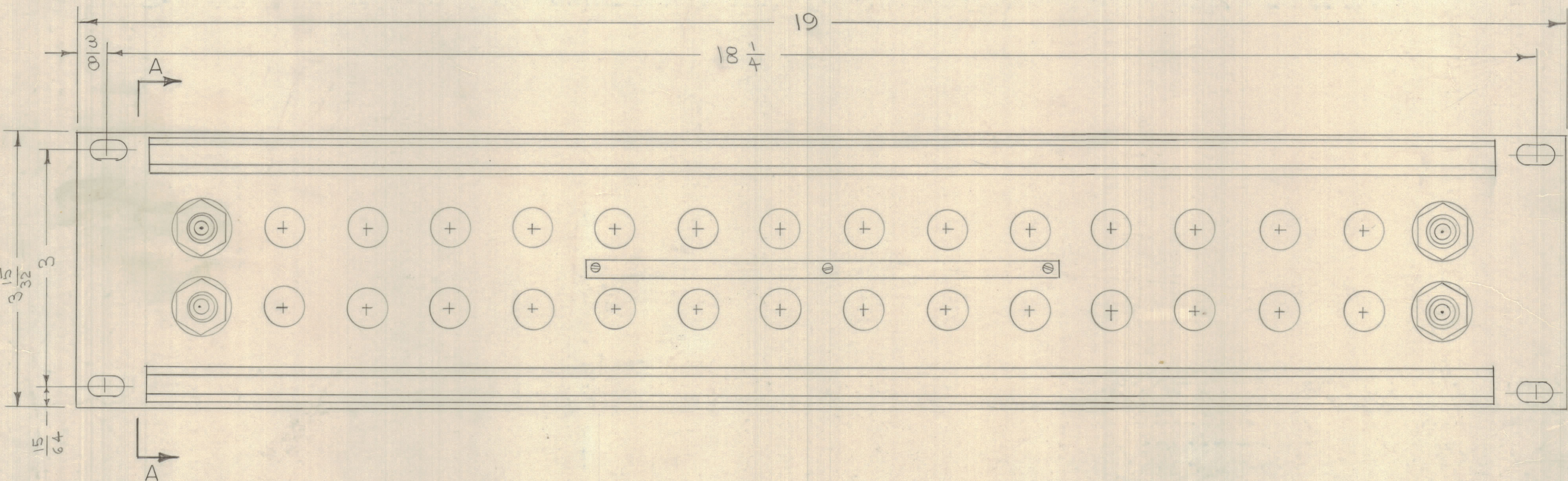
C

B

B

A

A



SWITCHES TO BE INSULATED FROM PANEL

QTY. REQ.	ITEM	PART NO.	DESCRIPTION	SYMBOL
-----------	------	----------	-------------	--------

LIST OF MATERIAL

UNLESS OTHERWISE SPECIFIED DIMENSIONS ARE IN INCHES AND INCLUDE CHEMICALLY APPLIED OR PLATED FINISHES		FINAL APPROVAL <i>WRA</i>	DATE 2/2/70
TOLERANCES ON		MECH. DES.	DATE
DECIMALS	FRACTIONS	ELECT. DES.	DATE
.X ± .05	± 1/64	CHECKED <i>WRA</i>	DATE 1-23-70
.XX ± .01	ANGLES	DRAWN <i>WRA</i>	DATE 1-20-70
.XXX ± .005	± 0° -30°		

**THE TECHNICAL MATERIEL CORP.**  
MAMARONECK, NEW YORK

SWITCHING PATCH PANEL

QTY / UNIT	MODEL USED ON	ASS'Y NO.
APPLICATION		
CODE		

**NOTICE TO PERSONS RECEIVING THIS DRAWING**  
THE TECHNICAL MATERIEL CORPORATION claims proprietary right in the material disclosed hereon. This drawing is issued in confidence for engineering information only and may not be reproduced or used to manufacture anything shown hereon without permission from THE TECHNICAL MATERIEL CORPORATION to the user. This drawing is loaned for mutual assistance and is subject to recall at any time.

MATERIAL		SIZE	CODE IDENT NO.	DWG NO.	ISSUE
FINISH		C	82679	SPP-N421216	A

SCALE 1:1	SHEET 1 OF 1
-----------	--------------

4

3

2

1

SPP-N421216 A B