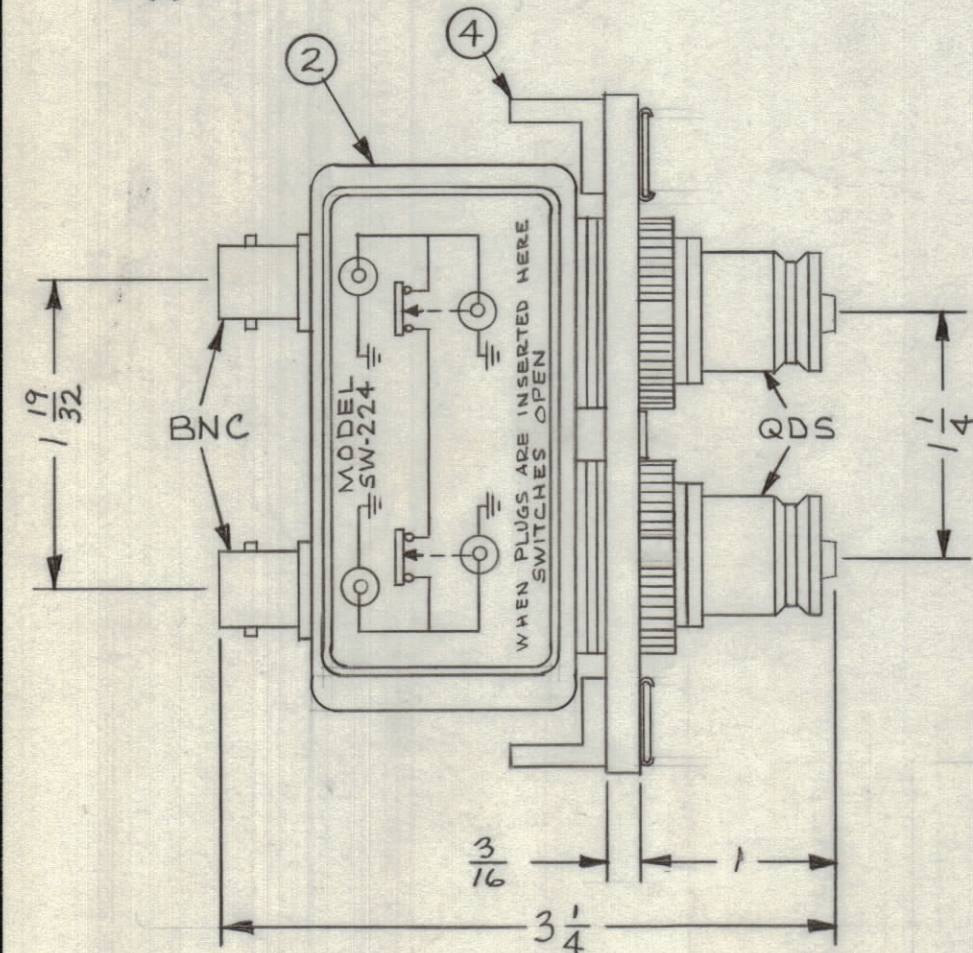
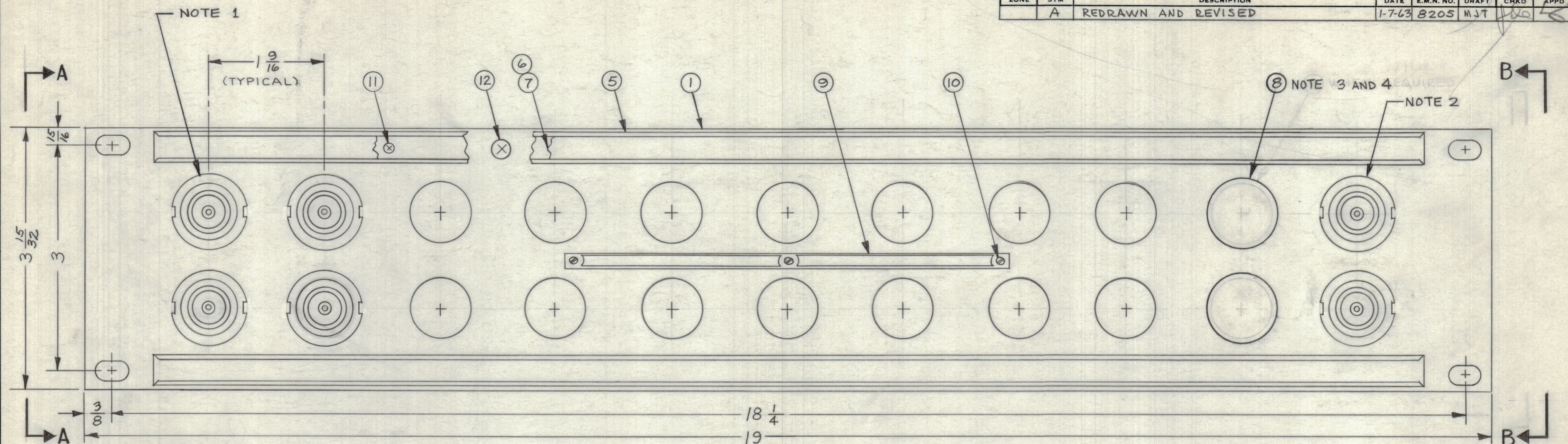
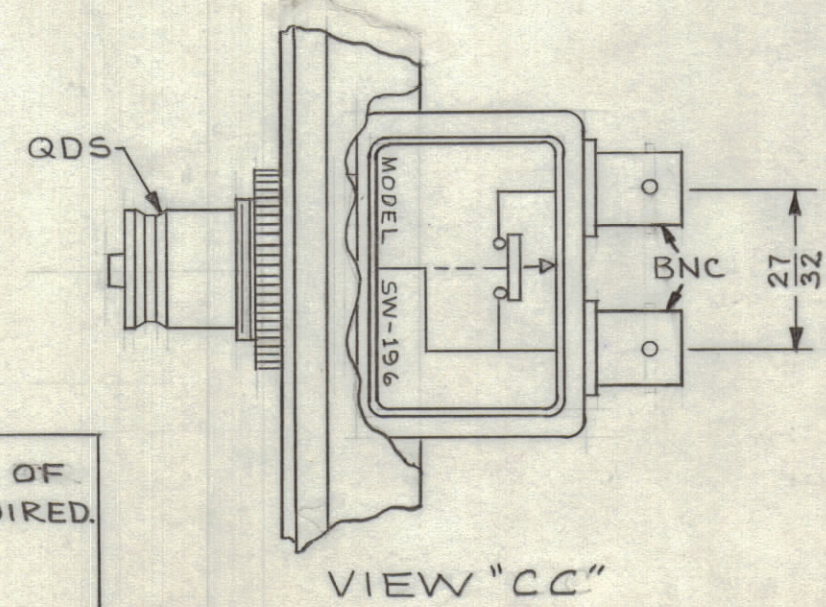
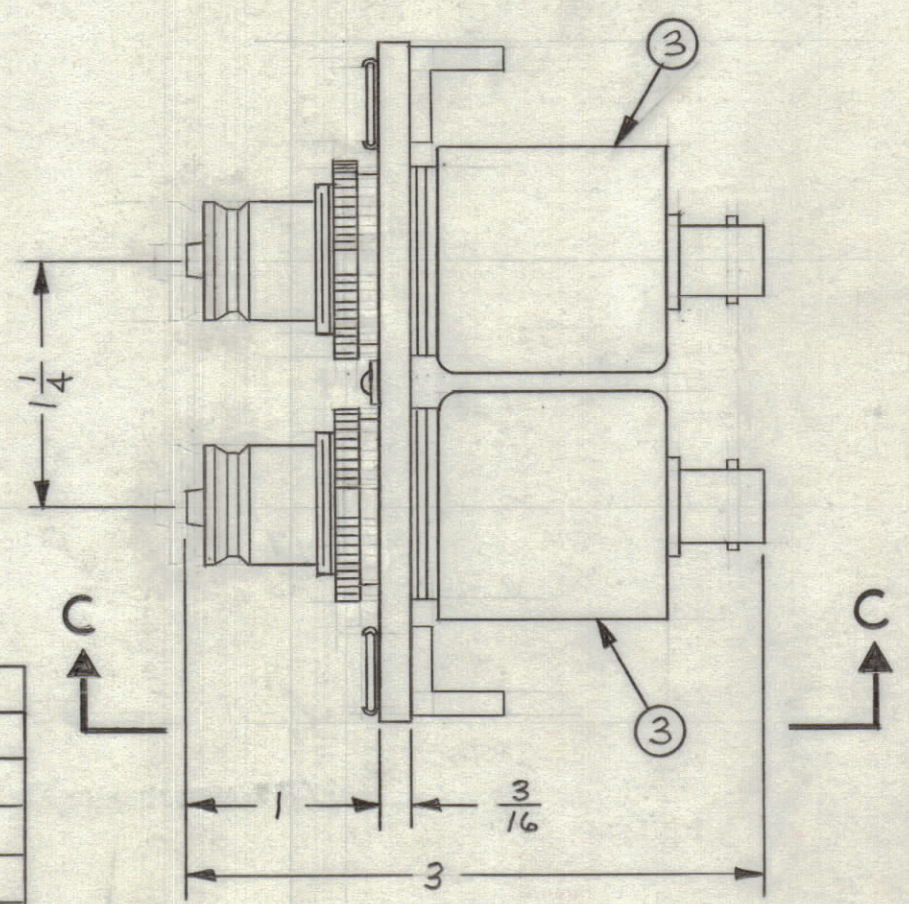


REVISIONS							
ZONE	SYM	DESCRIPTION	DATE	E.M.N. NO.	DRAFT	CHKD	APPD
A		REDRAWN AND REVISED	1-7-63	8205	MJT		



(REF) SPP-4B11	11	0	0
SPP-8B 102	10	2	0
SPP-8B 92	9	2	2
SPP-8B 82	8	2	4
SPP-8B 74	7	4	4
SPP-8B 64	6	4	6
SPP-8B 56	5	6	6
SPP-8B 46	4	6	8
SPP-8B 38	3	8	8
SPP-8B 28	2	8	10
SPP-8B 110	1	10	10
(REF) SPP-2A11	0	11	0
MODEL	QUAN. ITEM 2	QUAN. ITEM 3	QUAN. ITEM 8



REQ'D.	ITEM	PART NUMBER	DESCRIPTION	SYMBOL
1	15	TG-100	TAG, WARNING	
X	14	S-	TEST PROCEDURE	
1	13	TP-109	WRENCH, SOCKET (LOOSE ITEM)	
12	12	SCFP0632BN5	SCREW, MACHINE	
12	11	SCFP0348BN3	SCREW, MACHINE	
3	10	SFB0256 SN3	SCREW, THREAD CUTTING	
1	9	NP-251	NAMEPLATE, IDENTIFICATION	
SEE CHART	8	HB-101-5-G	BUTTON, PLUG	
2	7	PX-396-17	GUARD, TAB	
2	6	PR-101-17	TAB, PAPER	
2	5	MS-1184	HOLDER, TAB	
2	4	PM-490	BRACE, PANEL	
SEE CHART	3	SW-196	SWITCH, RF	
SEE CHART	2	SW-224	SWITCH, RF	
1	1	MS-1182	PANEL, FRONT MACHINING	

MARTINENGO		LIST OF MATERIAL																	
MATERIAL ALUMINUM		THE TECHNICAL MATERIEL CORP. MAMARONECK, NEW YORK																	
FINISH TMC SMOOTH GRAY SEMI-GLOSS ENAMEL		TITLE PATCH PANEL, RF SWITCHING DUAL QDS TO DUAL BNC / SINGLE QDS TO DUAL BNC																	
UNLESS OTHERWISE SPECIFIED DIMENSIONS ARE IN INCHES AND INCLUDE CHEMICALLY APPLIED OR PLATED FINISHES	DECIMALS .X ± .05 .XX ± .01 .XXX ± .005	FRACTIONS ± 1/64 ANGLES ± 0° 30'	<table border="1"> <tr> <td>DRAWN M TANTILLO</td> <td>DATE 1-7-63</td> <td>FINAL APPROVAL [Signature]</td> <td>DATE 2/13/63</td> </tr> <tr> <td>CHECKED</td> <td>DATE</td> <td></td> <td></td> </tr> <tr> <td>ELECT. DES.</td> <td>DATE</td> <td colspan="2">SPP-8B102</td> </tr> <tr> <td>MECH. DES. [Signature]</td> <td>DATE 2/13/63</td> <td>SHEET</td> <td>REV. LTR. A</td> </tr> </table>	DRAWN M TANTILLO	DATE 1-7-63	FINAL APPROVAL [Signature]	DATE 2/13/63	CHECKED	DATE			ELECT. DES.	DATE	SPP-8B102		MECH. DES. [Signature]	DATE 2/13/63	SHEET	REV. LTR. A
DRAWN M TANTILLO	DATE 1-7-63	FINAL APPROVAL [Signature]	DATE 2/13/63																
CHECKED	DATE																		
ELECT. DES.	DATE	SPP-8B102																	
MECH. DES. [Signature]	DATE 2/13/63	SHEET	REV. LTR. A																

NOTES:

- SWITCHES (ITEM 2) ARE MOUNTED FROM LEFT TO RIGHT.
- SWITCHES (ITEM 3) ARE MOUNTED ON ALTERNATE HOLES FROM RIGHT TO LEFT.
- WHEN SWITCHES MOUNTING HOLES ARE NOT UTILIZED, PLUG BUTTONS (ITEM 8) ARE MOUNTED ON FACE OF PANEL.
- REFER TO CHART FOR APPLICATION OF PLUG BUTTONS (ITEM 8) WHEN REQUIRED.