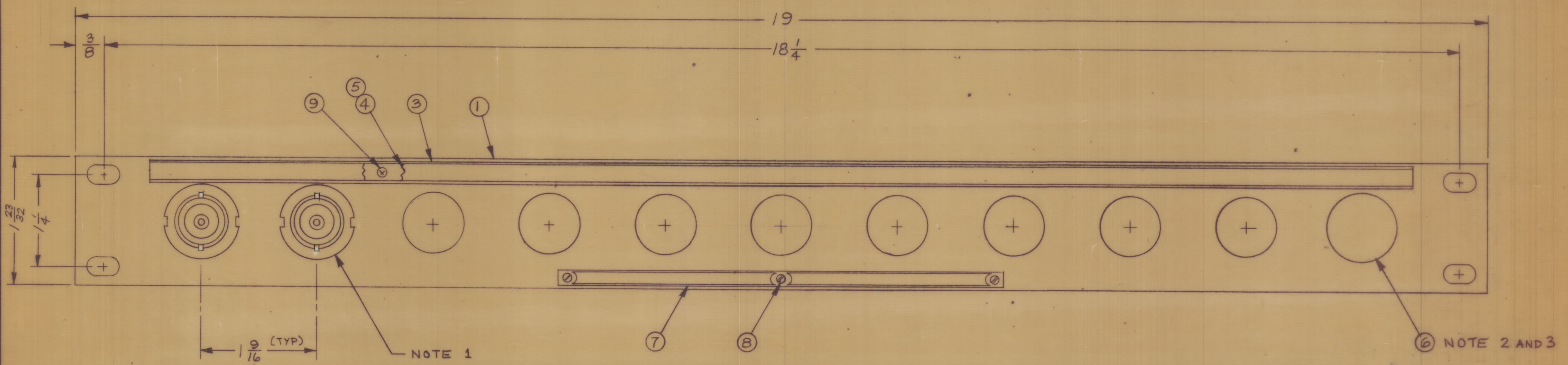


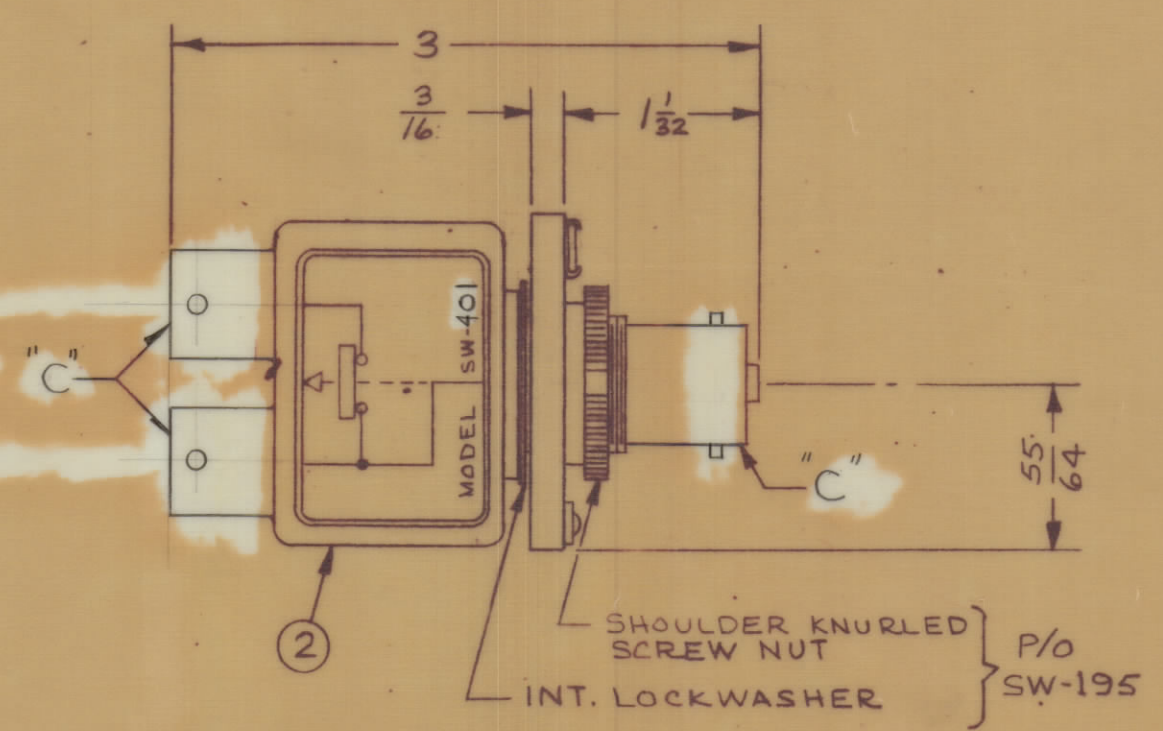
REVISIONS				
ZONE	SYM	DESCRIPTION	DATE	E.M.N. NO.
	Ø	ORIGINAL RELEASE FOR PRODUCTION	9/3/65	Ø



MODEL DESIGNATION  
**SPP 515 A 11**

BASIC MODEL    PANEL HEIGHT    NO OF JACK SWITCHES

SPP-515A11	11	0
SPP-515A10	10	1
SPP-515A9	9	2
SPP-515A8	8	3
SPP-515A7	7	4
SPP-515A6	6	5
SPP-515A5	5	6
SPP-515A4	4	7
SPP-515A3	3	8
SPP-515A2	2	9
SPP-515A1	1	10
MODEL	QUAN. ITEM 2	QUAN. ITEM 6



- NOTES:
- SWITCHES (ITEM 2) ARE MOUNTED FROM LEFT TO RIGHT.
  - WHEN SWITCH MOUNTING HOLES ARE NOT UTILIZED, PLUG BUTTONS (ITEM 6) ARE MOUNTED ON FACE OF PANEL.
  - REFER TO CHART FOR APPLICATION OF PLUG BUTTON (ITEM 6) WHEN REQUIRED.

REQ'D.	ITEM	PART NUMBER	DESCRIPTION	SYMBOL
X	12	S-692	TEST PROCEDURE	
1	11	TG-100	TAG, WARNING	
1	10	TP-109	WRENCH, SOCKET (LOOSE ITEM)	
6	9	SCFP0348BN5	SCREW, MACHINE	
3	8	SFB0256 SN3	SCREW, THREAD CUTTING	
1	7	NP-251	NAMEPLATE, IDENTIFICATION	
SEE CHART	6	HB-101-5-G	BUTTON, PLUG	
1	5	PX-464-17	GUARD, TAB	
1	4	PR-102-17	TAB, PAPER	
1	3	MS-1656	HOLDER, CARD	
SEE CHART	2	SW-401	SWITCH, RF	
1	1	MS-1657	MACHINING, FRONT PANEL	

MATERIAL		LIST OF MATERIAL	
ALUMINUM		THE TECHNICAL MATERIEL CORP. MAMARONECK, NEW YORK	
FINISH TMC SMOOTH GRAY SEMI-GLOSS ENAMEL		TITLE PATCH PANEL, RF SWITCHING SINGLE "C" TO DUAL "C"	
UNLESS OTHERWISE SPECIFIED DIMENSIONS ARE IN INCHES AND INCLUDE CHEMICALLY APPLIED OR PLATED FINISHES	DECIMALS .X ± .05 .XX ± .01 .XXX ± .005	FRACTIONS ± 1/64 ANGLES ± 0° 20'	TOLERANCES
Q'TY./UNIT	MODEL USED ON	ASS'Y. NO.	SCALE
THE CONTENTS OF THIS DRAWING ARE THE EXCLUSIVE PROPERTY OF THE TECHNICAL MATERIEL CORP. ITS UNAUTHORIZED USE OR REPRODUCTION IN WHOLE OR IN PART IS STRICTLY FORBIDDEN.		DRAWN	DATE
		CHECKED	DATE
		ELECT. DES.	DATE
		MECH. DES.	DATE
		FINAL APPROVED	DATE
		SPP-515A11	
		REV. LTR.	

SPP-515A11

NOTES