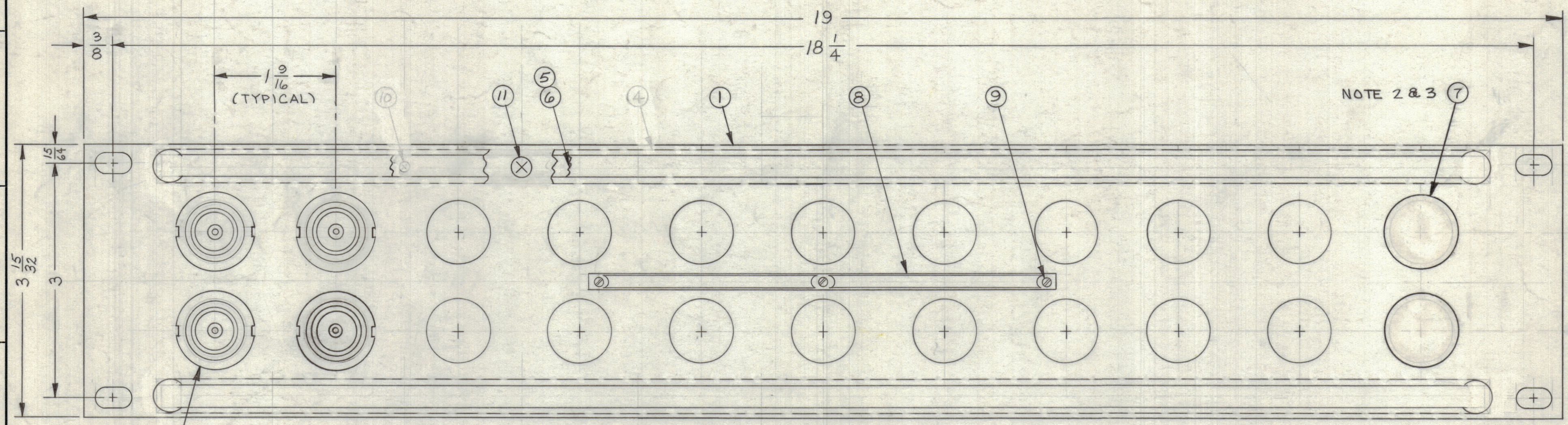


REVISIONS							
ZONE	SYM	DESCRIPTION	DATE	E.M.N. NO.	DRAFT	CHKD	APPD
A1, F1	A	DWG NO. WAS SPP-5B11; ADDED ITEM 7	1-22-63	B2229	MJT		
	B	ITEM 4 & ITEM 10 DELETED	7-18-64	B2015	GDL		



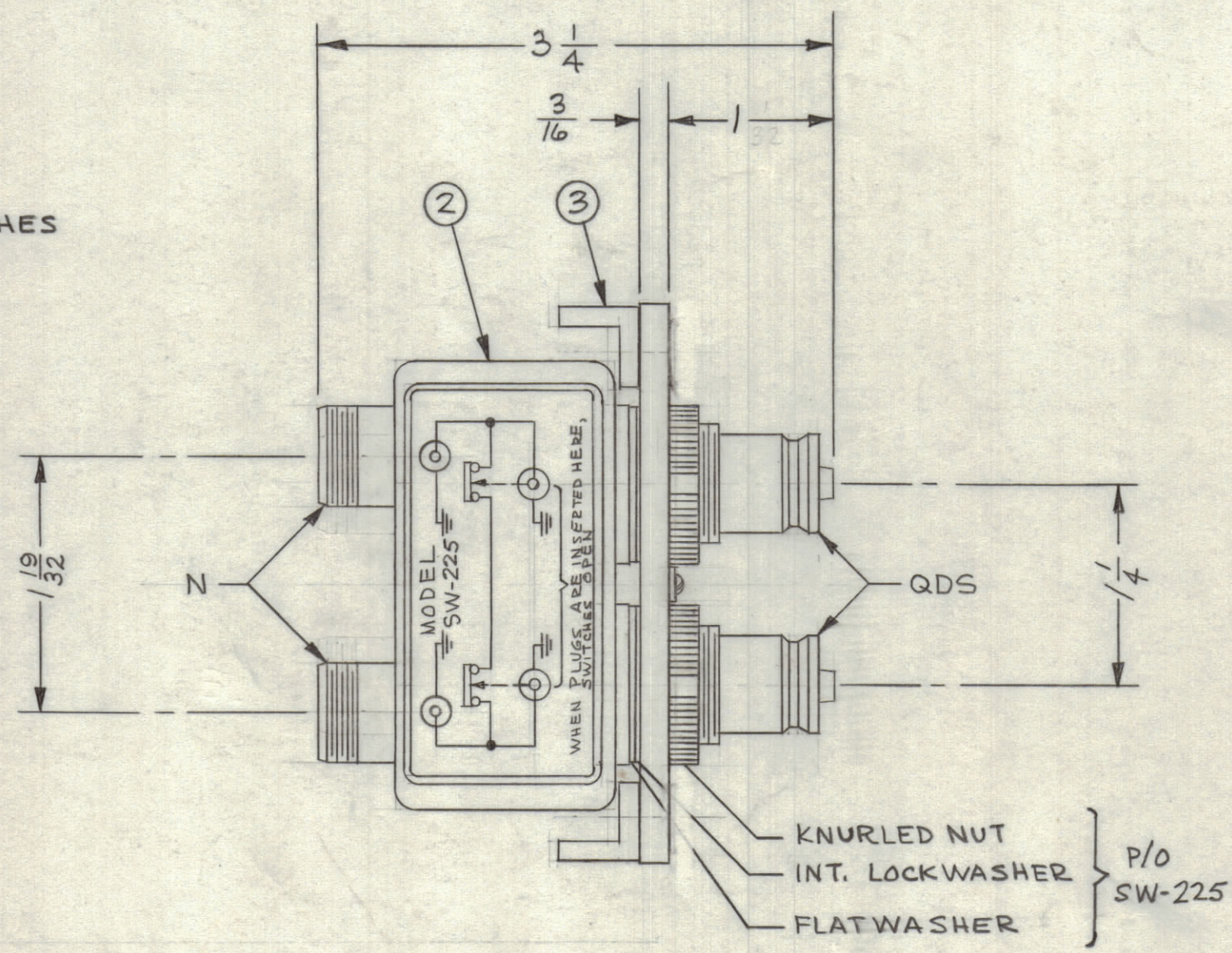
NOTE 1: SEE CHART 2 AND 7

MODEL DESIGNATION

SPP-5 B 11

BASIC MODEL    PANEL HEIGHT    NO. OF JACK SWITCHES

SPP-5B11	11	0
SPP-5B10	10	2
SPP-5B9	9	4
SPP-5B8	8	6
SPP-5B7	7	8
SPP-5B6	6	10
SPP-5B5	5	12
SPP-5B4	4	14
SPP-5B3	3	16
SPP-5B2	2	18
SPP-5B1	1	20
MODEL	QUAN. ITEM 2	QUAN. ITEM 7



- NOTE:
- SWITCHES (ITEM 2) ARE MOUNTED FROM LEFT TO RIGHT.
  - WHEN SWITCHES MOUNTING HOLES ARE NOT UTILIZED PLUG BUTTONS (ITEM 7) ARE TO BE MOUNTED ON FACE OF FRONT PANEL.
  - REFER TO CHART FOR APPLICATION OF PLUG BUTTON (ITEM 7) WHEN REQUIRED.

REQ'D.	ITEM	PART NUMBER	DESCRIPTION	SYMBOL
1	14	TG-100	TAG, WARNING	
X	13	S-685	TEST PROCEDURE	
1	12	TP-109	WRENCH, SOCKET (LOOSE ITEM)	
12	11	SCFP0632BN5	SCREW, MACHINE	
<del>12</del>	<del>10</del>	<del>SCFP0348BN3</del>	<del>SCREW, MACHINE</del>	
3	9	SFB0256 SN3	SCREW, THREAD CUTTING	
1	8	NP-251	NAMEPLATE IDENTIFICATION	
SEE CHART	7	HB-101-5-G	BUTTON, PLUG	
2	6	PX-396-17	GUARD, TAB	
2	5	PR-101-17	TAB, PAPER	
<del>2</del>	<del>4</del>	<del>MS-1184</del>	<del>HOLDER, TAB</del>	
2	3	PM-490	BRACE, PANEL	
SEE CHART	2	SW-225	SWITCH, R.F.	
1	1	MS-1182	PANEL, FRONT, MACHINING	

MARTINENGO		LIST OF MATERIAL	
MATERIAL ALUMINUM		THE TECHNICAL MATERIEL CORP. MAMARONECK, NEW YORK	
FINISH TMC SMOOTH GRAY SEMI-GLOSS ENAMEL		TITLE PATCH PANEL RF SWITCHING DUAL QDS TO DUAL N	
UNLESS OTHERWISE SPECIFIED DIMENSIONS ARE IN INCHES AND INCLUDE CHEMICALLY APPLIED OR PLATED FINISHES		DRAWN M. TANTILLO	DATE 11-27-62
TOLERANCES DECIMALS .X ± .05 .XX ± .01 .XXX ± .005 FRACTIONS ± 1/64 ANGLES ± 0° 30'		CHECKED <i>[Signature]</i>	DATE 11/27/62
		ELECT. DES. <i>[Signature]</i>	DATE
		MECH. DES. <i>[Signature]</i>	DATE 12/3/62
		FINAL APPROVAL <i>[Signature]</i> DATE	
		SPP-5	
		SHEET	
		REV. LTR. B	

SEE CHART		ASSY. NO.
Q'TY./UNIT	MODEL USED ON	
SCALE	CODE	

THE CONTENTS OF THIS DRAWING ARE THE EXCLUSIVE PROPERTY OF THE TECHNICAL MATERIEL CORP. ITS UNAUTHORIZED USE OR REPRODUCTION IN WHOLE OR IN PART IS STRICTLY FORBIDDEN.

NOTES

SPP-5 B