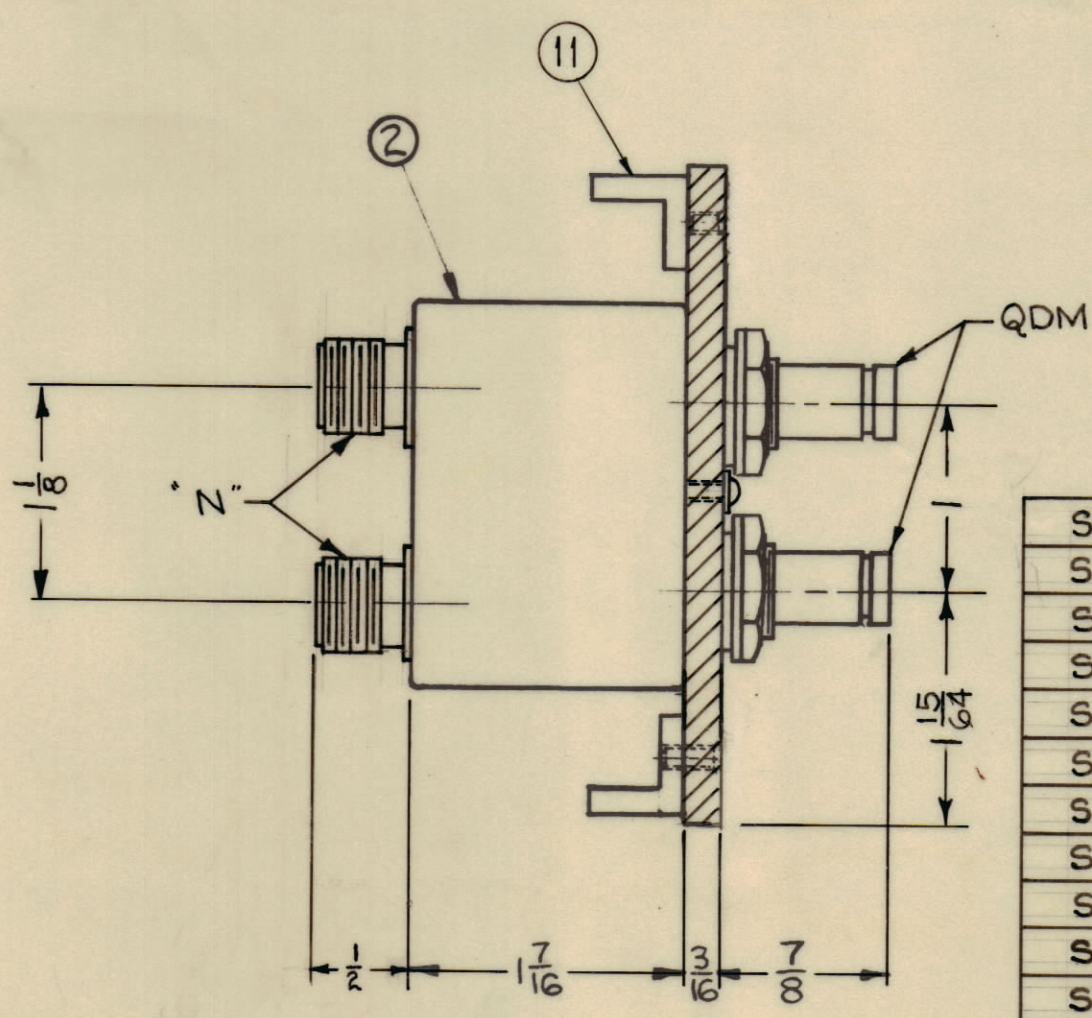
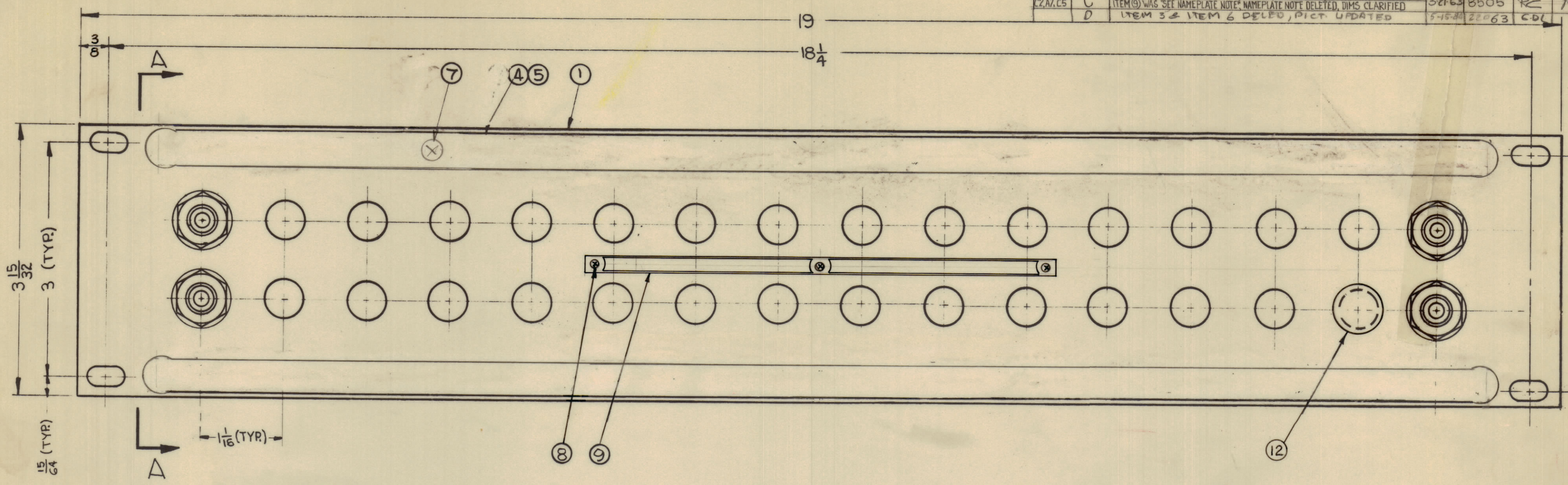


REVISIONS						
ZONE	SYM	DESCRIPTION	DATE	E.M.N. NO.	DRAFT	CHKD
DJ, A3	A	PART NO. WAS SPP-40416; ASSEMBLY NO. ADDED	9-18-62	7361	G.S.	
C2	B	ITEM (11) ADDED	10-10-62	7406	SP	
B7, B4, C7 C2, A7, C5	C	NOTES, CHART, ITEM (12) ADDED; ITEM (2) QTY WAS 16, NAMEPLATE RELOCATED ITEM (9) WAS SEE NAMEPLATE NOTE; NAMEPLATE NOTE DELETED, DIMS CLARIFIED	3-21-63	8505	RC	JAB
	D	ITEM 3 & ITEM 6 DELED, PICT UPDATED	5-15-60	22063	CDL	



MODEL	QUANTITY ITEM 2	QUANTITY ITEM 12
SPP-40616	16	0
SPP-40615	15	2
SPP-40614	14	4
SPP-40613	13	6
SPP-40612	12	8
SPP-40611	11	10
SPP-40610	10	12
SPP-4069	9	14
SPP-4068	8	16
SPP-4067	7	18
SPP-4066	6	20
SPP-4065	5	22
SPP-4064	4	24
SPP-4063	3	26
SPP-4062	2	28
SPP-4061	1	30

SEE CHART	ITEM	PART NUMBER	DESCRIPTION	SYMBOL
12		HB-101-11-G	PLUG, BUTTON	
2	11	PM-486	BRACE, PANEL	
X	10	S-691	TEST PROCEDURE	
1	9	NP-251	NAMEPLATE, IDENTIFICATION	
3	8	SFBPO256SN3	SCREW, THREAD CUTTING	
12	7	SCFPO632BN5	SCREW, MACHINE	
	6			
2	5	PX-396-17	GUARD, TAB	
2	4	PR-101-17	TAP, PAPER	
	3			
SEE CHART	2	SW-309	SWITCH, JACK ASSEMBLY	
1	1	MS-2975	MACHINING, FRONT PANEL	

- NOTES:
1. SWITCHES (ITEM 2) ARE MOUNTED FROM LEFT TO RIGHT.
 2. WHEN SWITCH MOUNTING HOLES ARE NOT UTILIZED, PLUG BUTTONS (ITEM 12) ARE MOUNTED ON FACE OF PANEL.
 3. REFER TO CHART FOR APPLICATION OF PLUG BUTTONS (ITEM 12) WHEN REQUIRED.

LIST OF MATERIAL			
MATERIAL	ALUMINUM 19 x 3 15/32 x 3/16	THE TECHNICAL MATERIEL CORP. MAMARONECK, NEW YORK	
FINISH	SI15 TMC SMOOTH GREY ENAMEL	TITLE	PANEL, PATCH R.F. SWITCHING
UNLESS OTHERWISE SPECIFIED DIMENSIONS ARE IN INCHES AND INCLUDE CHEMICALLY APPLIED OR PLATED FINISHES		DRAWN	R. Lurchin
DECIMALS	.X ± .05	DATE	6-5-62
	.XX ± .01	CHECKED	Hde
	.XXX ± .005	DATE	
FRACTIONS	± 1/64	ELECT. DES.	
	ANGLES	DATE	
	± 0° 30'	MECH. DES.	cdm
		DATE	6/7/62

SEE CHART		
QTY./UNIT	MODEL USED ON	ASS'Y. NO.
DO NOT SCALE		

THE CONTENTS OF THIS DRAWING ARE THE EXCLUSIVE PROPERTY OF THE TECHNICAL MATERIEL CORP. ITS UNAUTHORIZED USE OR REPRODUCTION IN WHOLE OR IN PART IS STRICTLY FORBIDDEN.

SPP-40616 D