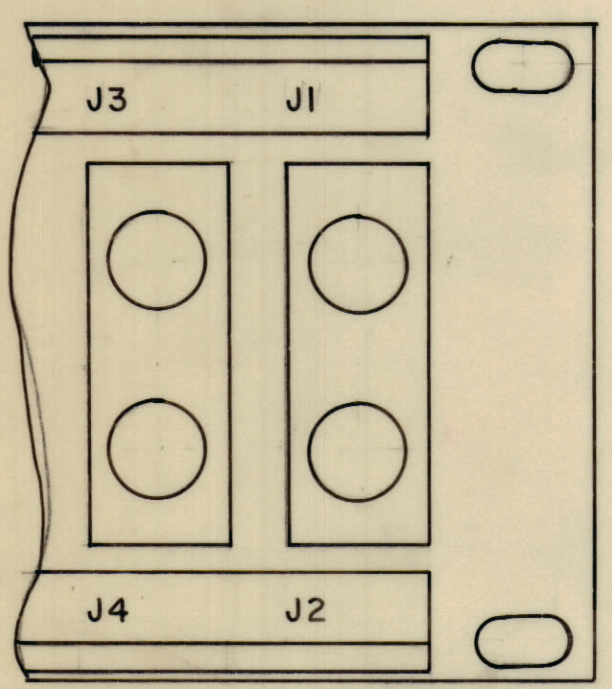
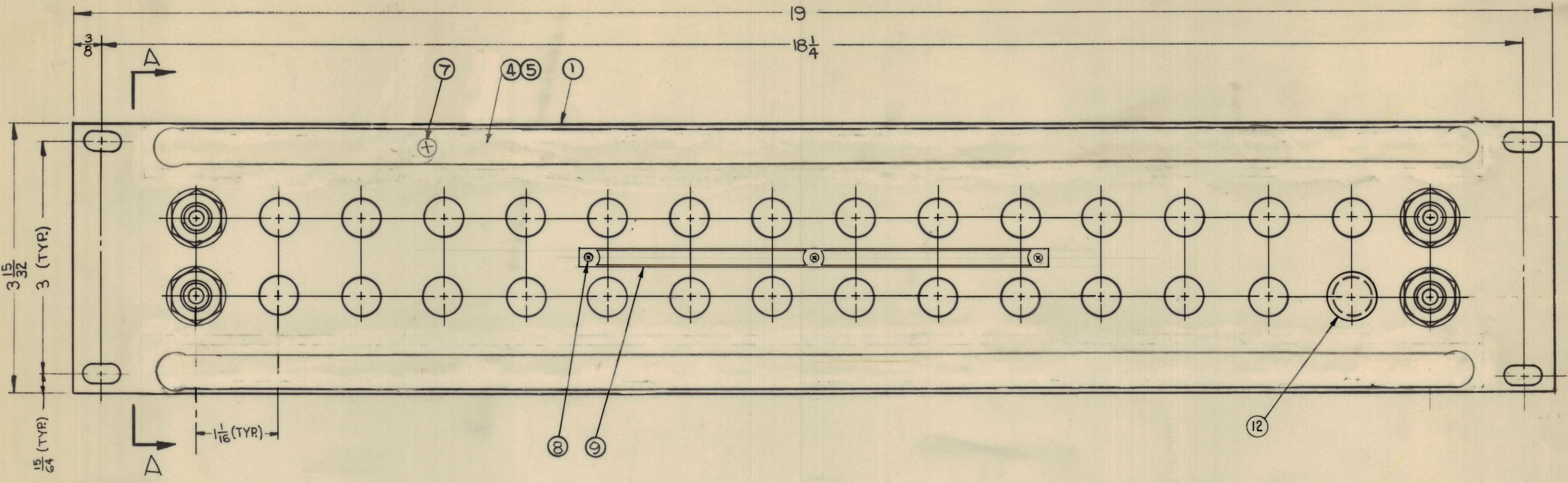
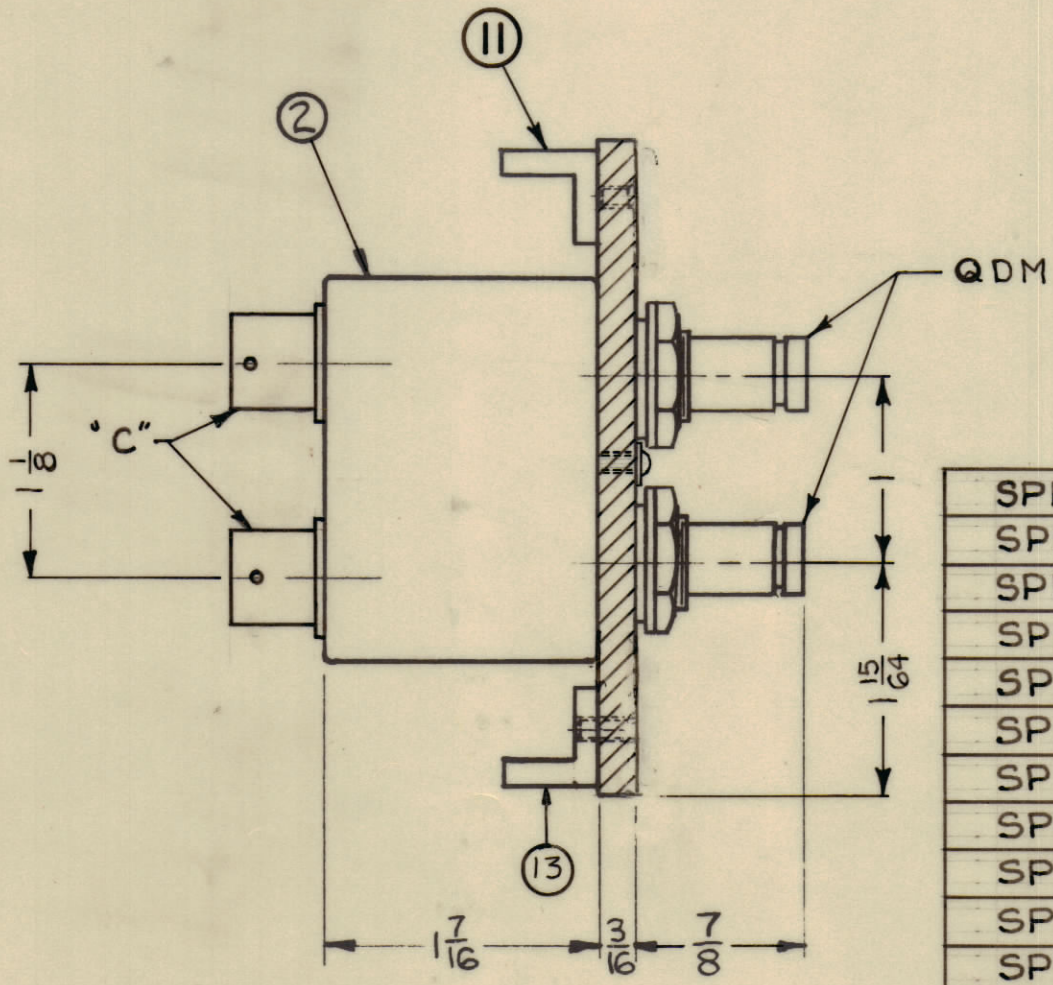


REVISIONS						
ZONE	SYM	DESCRIPTION	DRAWN	CHKD	APPD	DATE
C		REVISED & UPDATED	4/4/60	18956	HL	EFM
D		ITEM 3 & 6 DELETED, ITEM 4 WAS PR103, ITEM 5 DX670	5-15-64	22063	GDL	



REAR VIEW



SIDE VIEW A-A

- NOTES:
1. SWITCHES (ITEM 2) ARE MOUNTED FROM LEFT TO RIGHT.
 2. WHEN SWITCH MOUNTING HOLES ARE NOT UTILIZED, PLUG BUTTONS (ITEM 12) ARE MOUNTED ON FACE OF PANEL.
 3. REFER TO CHART FOR APPLICATION OF PLUG BUTTONS (ITEM 12) WHEN REQUIRED.

MODEL	QUANTITY ITEM 2	QUANTITY ITEM 12
SPP-40516	16	0
SPP-40515	15	2
SPP-40514	14	4
SPP-40513	13	6
SPP-40512	12	8
SPP-40511	11	10
SPP-40510	10	12
SPP-4059	9	14
SPP-4058	8	16
SPP-4057	7	18
SPP-4056	6	20
SPP-4055	5	22
SPP-4054	4	24
SPP-4053	3	26
SPP-4052	2	28
SPP-4051	1	30

REQ'D.	ITEM	PART NUMBER	DESCRIPTION	SYMBOL
1	13	LD2318-2/PM486	BRACE PANEL	
SEE CHART	12	HB-101-11-G	PLUG BUTTON	
1	11	LD2318-1/PM486	BRACE PANEL	
X	10	S-691	TEST PROCEDURE	
1	9	NP-251	NAMEPLATE, IDENTIFICATION	
3	8	SFBP02565N3	SCREW, THREAD CUTTING	
12	7	SCFPO632BN6	SCREW, MACHINE	
	6			
2	5	PX 396-17	GUARD, TAB	
2	4	PR 101-17	TAP, PAPER	
	3			
SEE CHART	2	SW-310	SWITCH, JACK ASSEMBLY	
1	1	MS-2975	MACHINING, FRONT PANEL	

LIST OF MATERIAL			
MATERIAL	ALUMINUM 19x3 15/32 x 3/16	THE TECHNICAL MATERIEL CORP. MAMARONECK, NEW YORK	
FINISH	SI15 TMC SMOOTH GREY ENAMEL	TITLE PANEL, PATCH R.F. SWITCHING	
UNLESS OTHERWISE SPECIFIED DIMENSIONS ARE IN INCHES AND INCLUDE CHEMICALLY APPLIED OR PLATED FINISHES		DRAWN R. Turchin	DATE 6-5-62
DECIMALS .X ± .05 .XX ± .01 .XXX ± .005		CHECKED JHL	DATE
FRACTIONS ± 1/64 ANGLES ± 0° 30'		ELECT. DES. GDM	DATE 6/27/62
TOLERANCES		DATE	DATE
		DATE	DATE

QTY./UNIT	SCALE	SEE CHART	MODEL USED ON	ASS'Y. NO.
	DO NOT SCALE			

NOTES

THE CONTENTS OF THIS DRAWING ARE THE EXCLUSIVE PROPERTY OF THE TECHNICAL MATERIEL CORP. ITS UNAUTHORIZED USE OR REPRODUCTION IN WHOLE OR IN PART IS STRICTLY FORBIDDEN.

SPP-40516 D