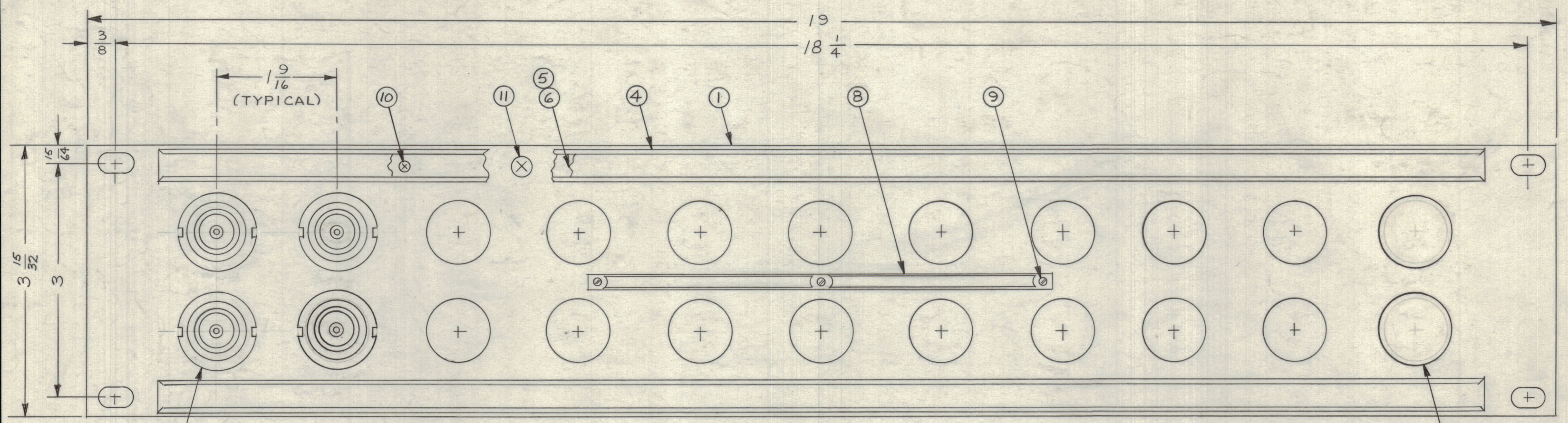


REVISIONS					
ZONE	SYM	DESCRIPTION	DATE	E.M.N. NO.	APPD



NOTE 1 E 1, 2 AND 3

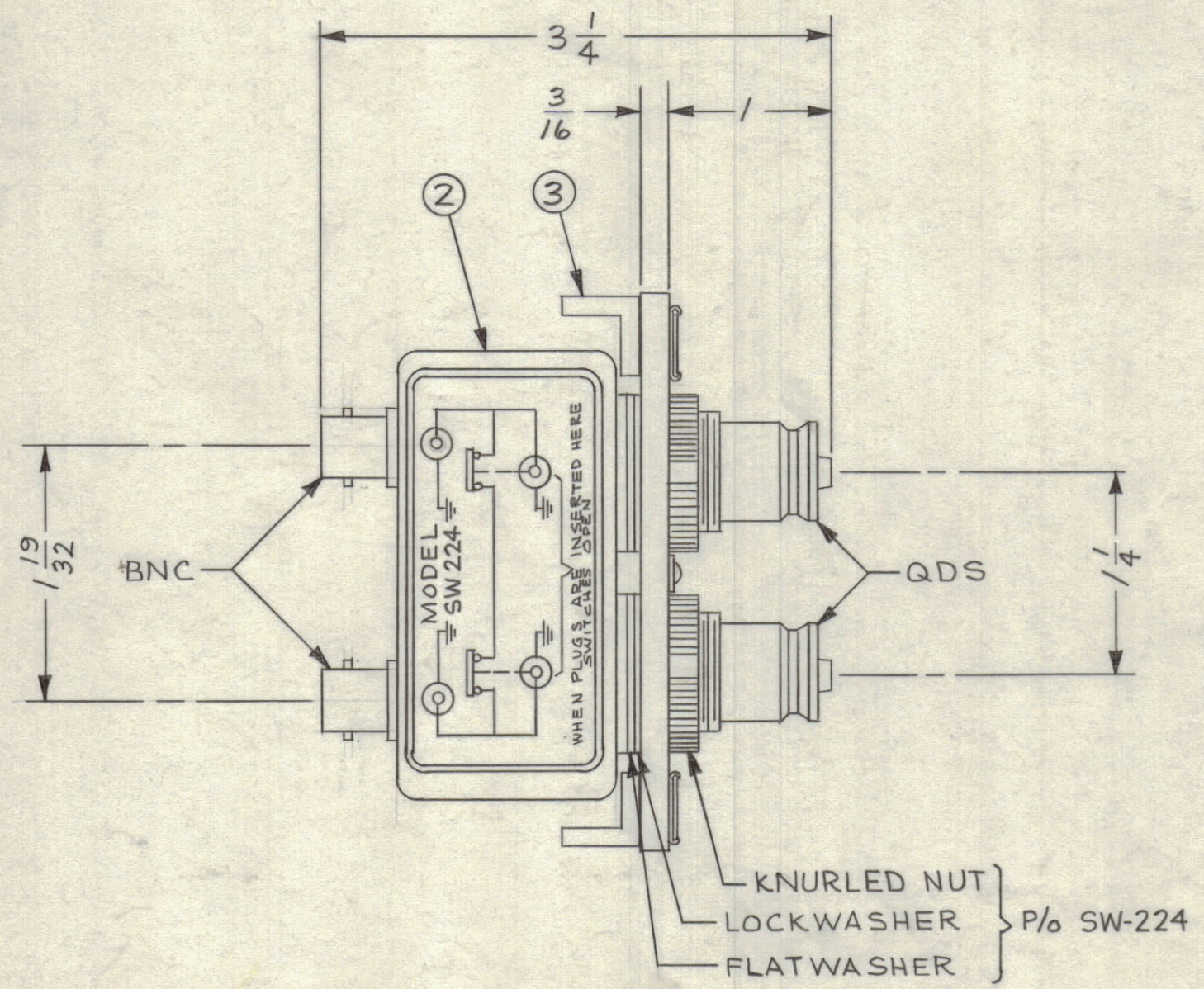
NOTE 2 AND 3 D

MODEL DESIGNATION

SPP-4 B 11

BASIC MODEL PANEL HEIGHT NO. OF JACK SWITCHES

SPP-4B11	11	0
SPP-4B10	10	2
SPP-4B9	9	4
SPP-4B8	8	6
SPP-4B7	7	8
SPP-4B6	6	10
SPP-4B5	5	12
SPP-4B4	4	14
SPP-4B3	3	16
SPP-4B2	2	18
SPP-4B1	1	20
MODEL	QUAN. ITEM 2	QUAN. ITEM 7



REQ'D.	ITEM	PART NUMBER	DESCRIPTION	SYMBOL
1	14	TG-100	TAG, WARNING	
X	13	S-685	TEST PROCEDURE	
1	12	TP-109	WRENCH SOCKET (LOOSE ITEM)	
12	11	SCFP0632BN5	SCREW, MACHINE	
12	10	SCFP0348BN3	SCREW, MACHINE	
3	9	SFB0256SN3	SCREW, THREAD CUTTING	
1	8	NP-251	NAMEPLATE IDENTIFICATION	
SEE CHART	7	HB-101-5-G	BUTTON, PLUG	
2	6	PX-396-17	GUARD, TAB	
2	5	PR-101-17	TAB, PAPER	
2	4	MS-1184	HOLDER, TAB	
2	3	PM-490	BRACE, PANEL	
SEE CHART	2	SW-224	SWITCH, R.F.	
1	1	MS-1182	PANEL, FRONT MACHINING	

MATERIAL		THE TECHNICAL MATERIEL CORP.	
ALUMINUM		MAMARONECK, NEW YORK	
FINISH TMC SMOOTH GRAY SEMI-GLOSS ENAMEL		TITLE PATCH PANEL, R.F. SWITCHING DUAL QDS TO DUAL BNC	
DRAWN M TANTILLO	DATE 1-5-63	FINAL APPROVAL	DATE
CHECKED	DATE		
ELECT. DES.	DATE	SPP-4	
MECH. DES.	DATE 1/16/63	SHEET	REV. LTR.

- NOTES:
- SWITCHES (ITEM 2) ARE MOUNTED FROM LEFT TO RIGHT.
  - WHEN SWITCH MOUNTING HOLES ARE NOT UTILIZED, PLUG BUTTONS (ITEM 7) ARE MOUNTED ON FACE OF FRONT PANEL.
  - REFER TO CHART FOR APPLICATION OF PLUG BUTTON (ITEM 7) WHEN REQUIRED.

NOTES

SEE CHART		ASS'Y. NO.
Q'TY./UNIT	MODEL USED ON	
SCALE	CODE	

UNLESS OTHERWISE SPECIFIED DIMENSIONS ARE IN INCHES AND INCLUDE CHEMICALLY APPLIED OR PLATED FINISHES

DECIMALS	FRACTIONS
.X ± .05	± 1/64
.XX ± .01	ANGLES ± 0° 30'
.XXX ± .005	

THE CONTENTS OF THIS DRAWING ARE THE EXCLUSIVE PROPERTY OF THE TECHNICAL MATERIEL CORP. ITS UNAUTHORIZED USE OR REPRODUCTION IN WHOLE OR IN PART IS STRICTLY FORBIDDEN.

SPP-4