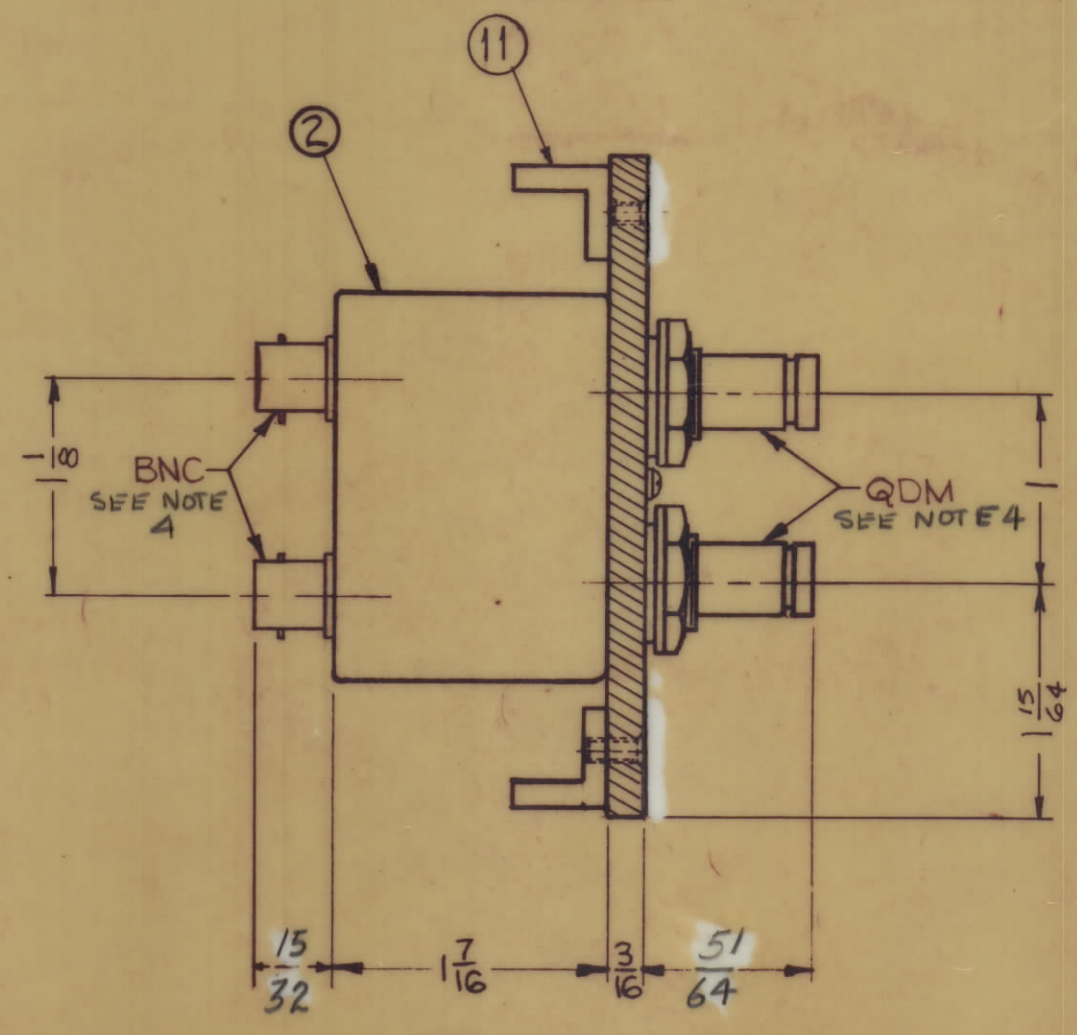


MODEL	QUAN. ITEM 2	QUAN. ITEM 12
SPP-3441	1	30
SPP-3442	2	28
SPP-3443	3	26
SPP-3444	4	24
SPP-3445	5	22
SPP-3446	6	20
SPP-3447	7	18
SPP-3448	8	16
SPP-3449	9	14
SPP-34410	10	12
SPP-34411	11	10
SPP-34412	12	8
SPP-34413	13	6
SPP-34414	14	4
SPP-34415	15	2
SPP-34416	16	0



- NOTES:
- SWITCHES (ITEM 2) ARE MOUNTED FROM LEFT TO RIGHT.
 - WHEN SWITCH MOUNTING HOLES ARE NOT UTILIZED, PLUG BUTTONS (ITEM 12) ARE MOUNTED ON FACE OF PANEL.
 - REFER TO CHART FOR APPLICATION OF PLUG BUTTONS (ITEM 12) WHEN REQUIRED.
 - CAUTION: USE ONLY 75 OHM SERIES MATING CONNECTORS

REQ'D.	ITEM	PART NUMBER	DESCRIPTION	SYMBOL
SEE CHART	12	HB-101-11-G	PLUG, BUTTON	
2	11	PM-486	BRACE, PANEL	
X	10	S-685	TEST PROCEDURE	
1	9	NP 878	NAMEPLATE, IDENTIFICATION	
3	8	SFBPO256SN3	SCREW, THREAD CUTTING	
12	7	SCFPO632BN5	SCREW, MACHINE	
	6			
2	5	PX-396-17	GUARD, TAB	
2	4	PR-101-17	TAP, PAPER	
	3			
2	2	SW-477	SWITCH, JACK ASSEMBLY	
1	1	MS-2975	MACHINING, FRONT PANEL	

MATERIAL				THE TECHNICAL MATERIEL CORP.			
ALUMINUM				MAMARONECK, NEW YORK			
19 x 3 15/32 x 3/16 THK							
FINISH: S115 TMC SMOOTH GREY ENAMEL				TITLE: PANEL, PATCH R.F. SWITCHING 70 OHM			
UNLESS OTHERWISE SPECIFIED DIMENSIONS ARE IN INCHES AND INCLUDE CHEMICALLY APPLIED OR PLATED FINISHES				DRAWN: [Signature] DATE: 6/11/69			
TOLERANCES: DECIMALS: .XX ± .01, .XXX ± .005; FRACTIONS: ± 1/64 ANGLES: ± 0° 30'				CHECKED: [Signature] DATE: 6/11/69			
				ELECT. DES. DATE: [Signature]			
				MECH. DES. DATE: [Signature]			
				SHEET: SPP34416			
				REV. LTR. A			

SPP-34416 A

THE CONTENTS OF THIS DRAWING ARE THE EXCLUSIVE PROPERTY OF THE TECHNICAL MATERIEL CORP. ITS UNAUTHORIZED USE OR REPRODUCTION IN WHOLE OR IN PART IS STRICTLY FORBIDDEN.