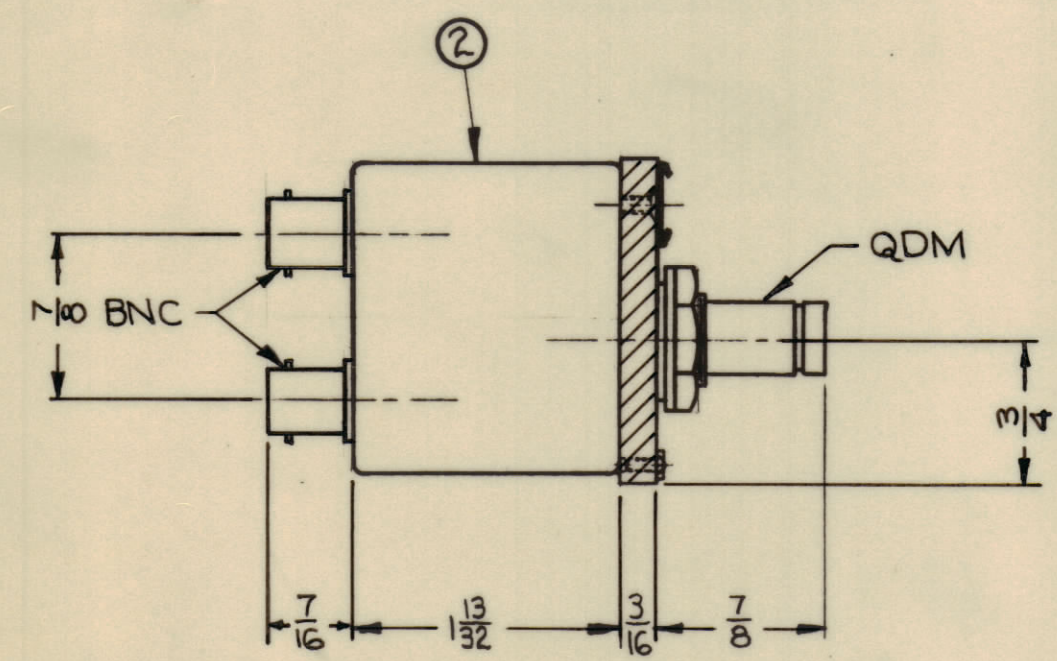
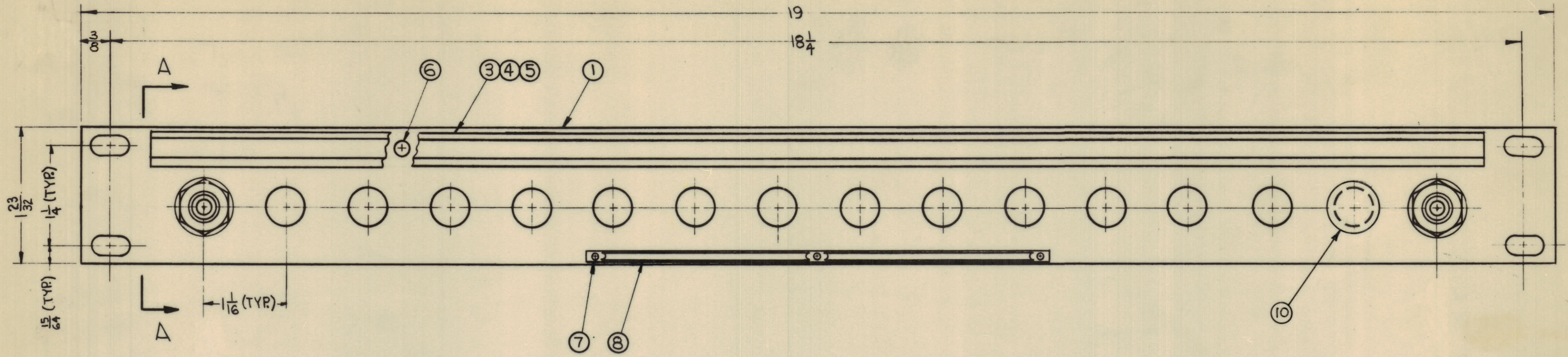


REVISIONS						
ZONE	SYM.	DESCRIPTION	DATE	E.M.N. NO.	DRAFT	CHKD
B7, B4, B2	A	NOTES, CHART & ITEM (10) ADDED, ITEM (2) QTY WAS 16	3-20-63	8500	RC	JLZ
C2, C7		ITEM (9) WAS S-392, ITEM (8) WAS "SEE NAMEPLATE NOTE"				
A7, D6		NAMEPLATE NOTE DELETED, DIMS 3/4 & 1/8 ADDED ON VIEW A-A				



SIDE VIEW A-A

NOTES:

1. SWITCHES (ITEM 2) ARE MOUNTED FROM LEFT TO RIGHT.
2. WHEN SWITCH MOUNTING HOLES ARE NOT UTILIZED, PLUG BUTTONS (ITEM 10) ARE MOUNTED ON FACE OF PANEL.
3. REFER TO CHART FOR APPLICATION OF PLUG BUTTONS (ITEM 10) WHEN REQUIRED.

SPP-30416	16	0
SPP-30415	15	1
SPP-30414	14	2
SPP-30413	13	3
SPP-30412	12	4
SPP-30411	11	5
SPP-30410	10	6
SPP-30409	9	7
SPP-30408	8	8
SPP-30407	7	9
SPP-30406	6	10
SPP-30405	5	11
SPP-30404	4	12
SPP-30403	3	13
SPP-30402	2	14
SPP-30401	1	15
MODEL	QUANTITY ITEM 2	QUANTITY ITEM 10

SEE CHART	ITEM	PART NUMBER	DESCRIPTION	SYMBOL
X	10	HB-101-11-G	PLUG BUTTON	
	9	S-692	TEST PROCEDURE	
	8	NP-251	NAMEPLATE IDENTIFICATION	
	7	SFBP0256SN3	SCREW, THREAD CUTTING	
	6	SCFP0348BN3	SCREW, MACHINE	
	5	PX-396-17	GUARD, TAB	
	4	PR-101-17	TAP, PAPER	
	3	MS-1184	HOLDER, CARD	
	2	SW-305	SWITCH, JACK ASSEMBLY	
	1	MS-2973	MACHINING, FRONT PANEL	

LIST OF MATERIAL			
MATERIAL	ALUMINUM 19x3 15/32 x 3/16	THE TECHNICAL MATERIEL CORP. MAMARONECK, NEW YORK	
FINISH	SI15 TMC SMOOTH GREY ENAMEL	TITLE PANEL, PATCH R.F. SWITCHING	
UNLESS OTHERWISE SPECIFIED DIMENSIONS ARE IN INCHES AND INCLUDE CHEMICALLY APPLIED OR PLATED FINISHES	DRAWN R. J. Juchacz	DATE 6-5-62	FINAL APPROVAL [Signature]
DECIMALS .X ± .05 .XX ± .01 .XXX ± .005	TOLERANCES ± 1/64 ANGLES ± 0° 30'	CHECKED [Signature]	DATE 6-26-62
		ELECT. DES. [Signature]	DATE 6/27/62
		MECH. DES. [Signature]	DATE
			SHEET SPP-30416
			REV. LTR. A

1	SEE CHART	ASS'Y. NO.
Q'TY./UNIT	MODEL USED ON	
SCALE	CODE	
DO NOT SCALE		
THE CONTENTS OF THIS DRAWING ARE THE EXCLUSIVE PROPERTY OF THE TECHNICAL MATERIEL CORP. ITS UNAUTHORIZED USE OR REPRODUCTION IN WHOLE OR IN PART IS STRICTLY FORBIDDEN.		

NOTES

SPP-30416 A