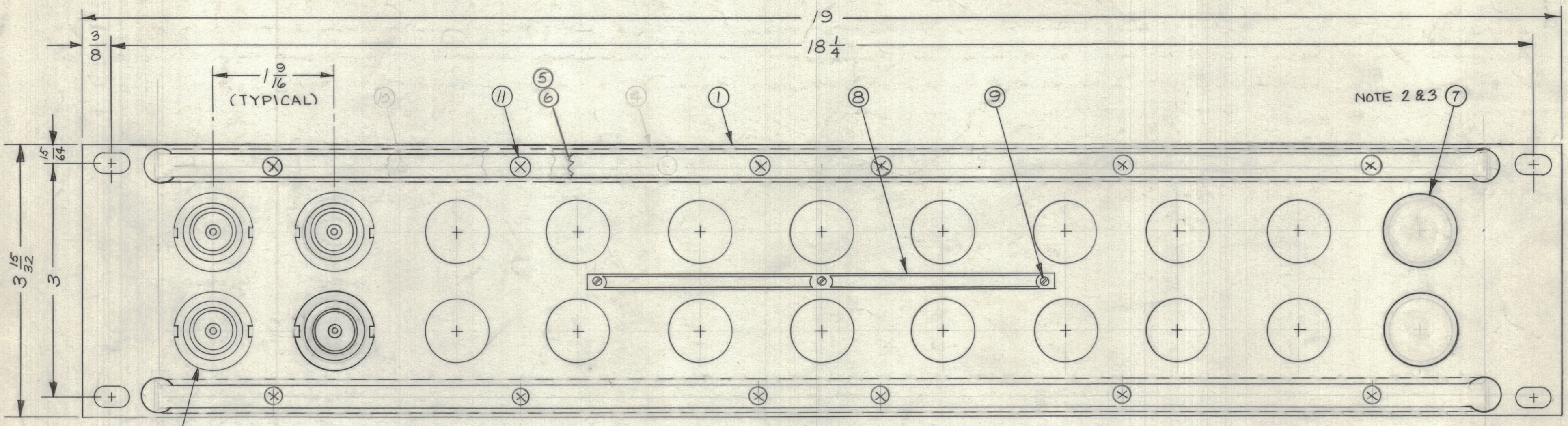


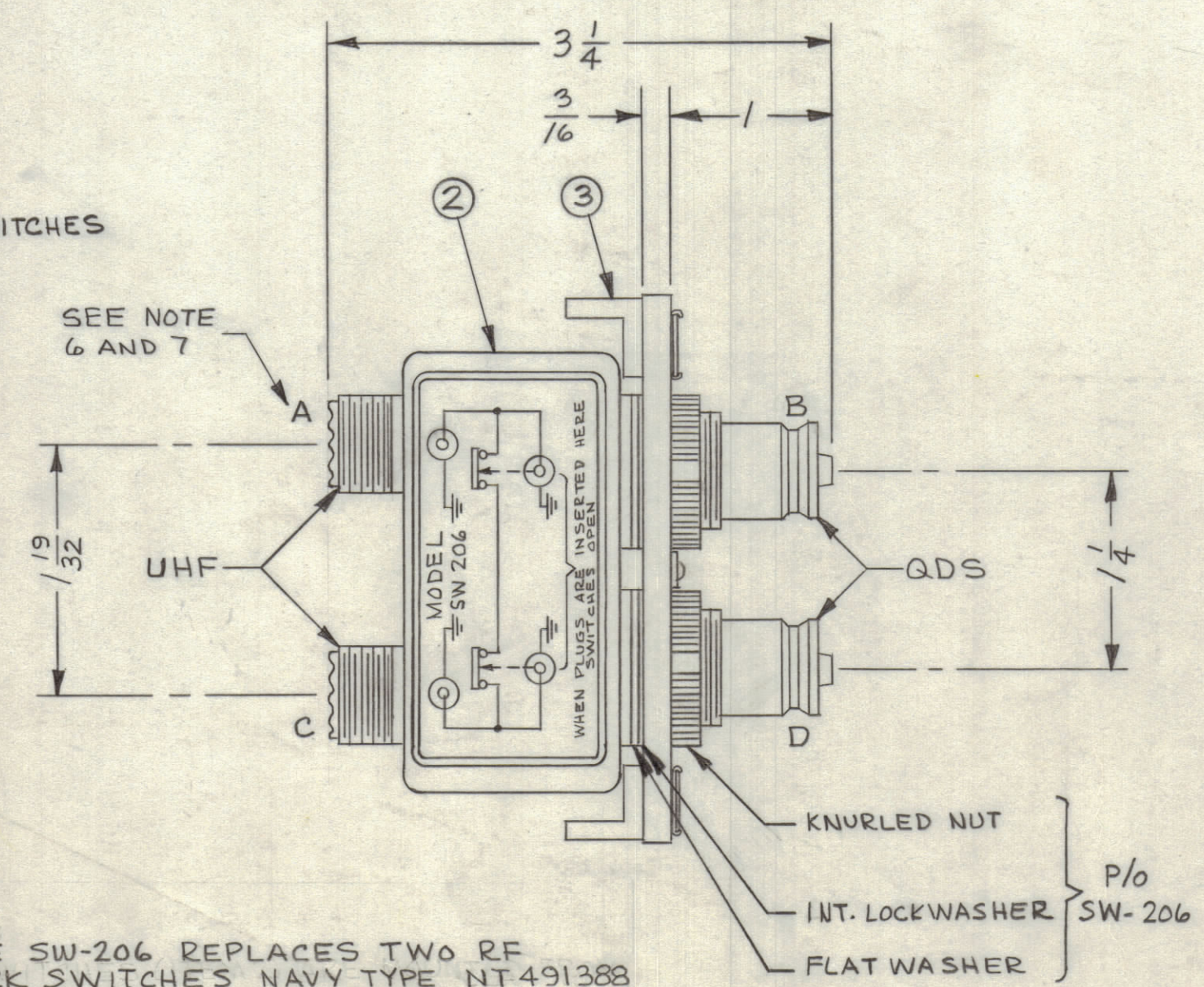
REVISIONS							
ZONE	SYM	DESCRIPTION	DATE	E.M.N. NO.	DRAFT	CHKD	APPD
A-1, F1	A	DWVG No. WAS SPP-3B11; ADDED ITEM 7	1-22-63	8190	MJT	JLB	KS
	B	ITEMS 4 & 10 DEL. PICTORIAL UPDATED	4-7-63	22045	CDL		



NOTE 1

MODEL DESIGNATION  
**SPP-3 B 11**  
 BASIC MODEL    PANEL HEIGHT    NO OF JACK SWITCHES

SPP-3B11	11	0
SPP-3B10	10	2
SPP-3B9	9	4
SPP-3B8	8	6
SPP-3B7	7	8
SPP-3B6	6	10
SPP-3B5	5	12
SPP-3B4	4	14
SPP-3B3	3	16
SPP-3B2	2	18
SPP-3B1	1	20
MODEL	QUAN. ITEM 2	QUAN. ITEM 7



- NOTES:
1. SWITCHES (ITEM 2) ARE MOUNTED FROM LEFT TO RIGHT.
  2. WHEN SWITCHES MOUNTING HOLES ARE NOT UTILIZED, PLUG BUTTONS (ITEM 7) ARE TO MOUNTED ON FACE OF FRONT PANEL.
  3. REFER TO CHART FOR APPLICATION OF PLUG BUTTON (ITEM 7) WHEN REQUIRED.
  4. ONE SPP-3B11 REPLACES 2 EACH J-239G JACK PANELS AND REAR JUMPERS.

5. ONE SW-206 REPLACES TWO RF JACK SWITCHES NAVY TYPE NT491388 (SEE SCHEMATIC DETAIL)
6. NORMAL CONNECTION A TO C. HOLES ARE (ITEM 7)
7. PATCH CORD CONNECTION B TO A ONT AND D TO C.

NOTES

QTY/UNIT	SEE CHART	MODEL USED ON	ASSY. NO.
SCALE	CODE		

THE CONTENTS OF THIS DRAWING ARE THE EXCLUSIVE PROPERTY OF THE TECHNICAL MATERIEL CORP. ITS UNAUTHORIZED USE OR REPRODUCTION IN WHOLE OR IN PART IS STRICTLY FORBIDDEN.

REQ'D.	ITEM	PART NUMBER	DESCRIPTION	SYMBOL
	1	14	TG-100	TAG, WARNING
	X	13	S-685	TEST PROCEDURE
	1	12	TP-109	WRENCH SOCKET (LOOSE ITEM)
	12	11	SCFP0632BN5	SCREW, MACHINE
	12	10	SCFP0632BN3	SCREW, MACHINE
	3	9	SFB0256SN3	SCREW, THREAD CUTTING
	1	8	NP-251	NAMEPLATE IDENTIFICATION
SEE CHART	7	HB-101-5-G	BUTTON, PLUG	
	2	6	PX-396-17	GUARD TAB
	2	5	PR-101-17	TAB, PAPER
	4			
	2	3	PM-490	BRACE, PANEL
SEE CHART	2	SW-206	SWITCH, R.F.	
1	1	MS-1182	PANEL, FRONT, MACHINING	

MATERIAL		FINISH		TITLE	
ALUMINUM		TMC SMOOTH GRAY SEMI-GLOSS ENAMEL		PATCH PANEL, R.F. SWITCHING DUAL QDS TO DUAL UHF	
UNLESS OTHERWISE SPECIFIED DIMENSIONS ARE IN INCHES AND INCLUDE CHEMICALLY APPLIED OR PLATED FINISHES		DRAWN M. TANTILLO		DATE 11-30-62	
DECIMALS .X ± .05 .XX ± .01 .XXX ± .005		CHECKED HDe		DATE 11/30/62	
FRACTIONS ± 1/64 ANGLES ± 6° 30'		ELECT. DES. JLB		DATE 12/3/62	
		MECH. DES. JLB		DATE 12/3/62	
				SHEET	

SPP-3 B

SPP-3 B