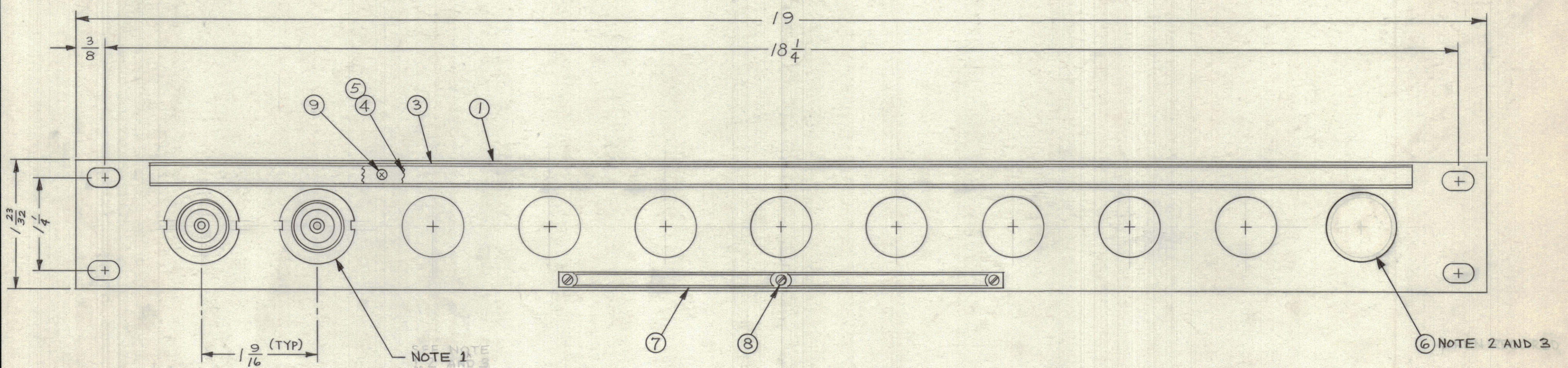
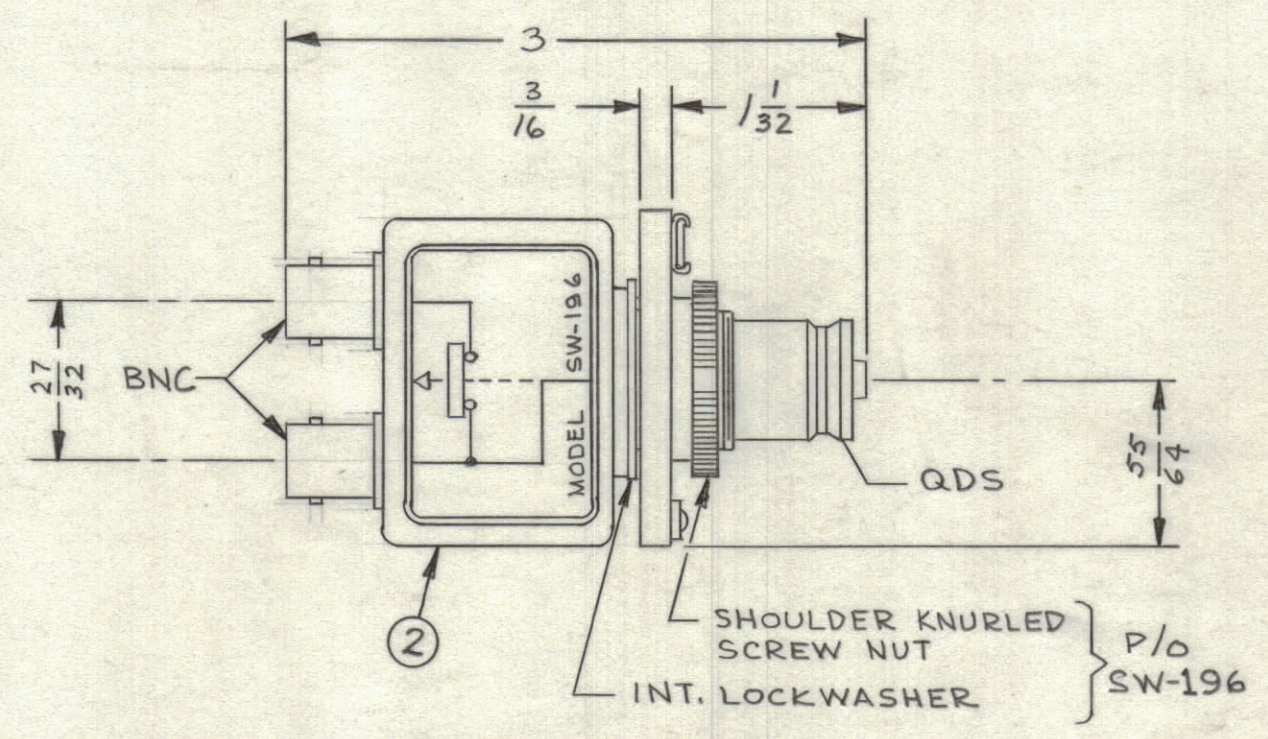


REVISIONS						
ZONE	SYM	DESCRIPTION	DATE	E.M.N. NO.	DRAFT	CHKD
	A	REDRAWN & REVISED WITH CHANGES	2-14-63	8305	MJT	



MODEL DESIGNATION
SPP-2 A 11
 BASIC MODEL PANEL HEIGHT NO. OF JACK SWITCHES

SPP-2A11	11	0
SPP-2A10	10	1
SPP-2A9	9	2
SPP-2A8	8	3
SPP-2A7	7	4
SPP-2A6	6	5
SPP-2A5	5	6
SPP-2A4	4	7
SPP-2A3	3	8
SPP-2A2	2	9
SPP-2A1	1	10
MODEL	QUAN. ITEM 2	QUAN. ITEM 6



- NOTES:
- SWITCHES (ITEM 2) ARE MOUNTED FROM LEFT TO RIGHT.
 - WHEN SWITCHES MOUNTING HOLES ARE NOT UTILIZED, PLUG BUTTONS (ITEM 6) ARE MOUNTED ON FACE OF PANEL.
 - REFER TO CHART FOR APPLICATION OF PLUG BUTTON (ITEM 6) WHEN REQUIRED.

REQ'D.	ITEM	PART NUMBER	DESCRIPTION	SYMBOL
X	12	S-692	TEST PROCEDURE	
1	11	TG-100	TAG, WARNING	
1	10	TP-109	WRENCH, SOCKET (LOOSE ITEM)	
6	9	SCFPO348BN5	SCREW, MACHINE	
3	8	SFB0256SN3	SCREW, THREAD CUTTING	
1	7	NP-251	NAMEPLATE, IDENTIFICATION	
SEE CHART	6	HB-101-5-G	BUTTON, PLUG	
1	5	PX-464-17	GUARD, TAB	
1	4	PR-102-17	TAB, PAPER	
1	3	MS-1656	HOLDER, CARD	
SEE CHART	2	SW-196	SWITCH, R.F.	
1	1	MS-1657	MACHINING, FRONT PANEL	

MARTINENGO LIST OF MATERIAL			
MATERIAL	ALUMINUM	THE TECHNICAL MATERIEL CORP. MAMARONECK, NEW YORK	
FINISH	TMC SMOOTH GRAY SEMI-GLOSS ENAMEL	TITLE PATCH PANEL, R.F. SWITCHING SINGLE QDS TO DUAL BNC	
DRAWN	W. TANTILLO	DATE	1-3-63
CHECKED		DATE	
ELECT. DES.		DATE	
MECH. DES.		DATE	1/13/63
SHEET			A

Q'TY./UNIT	MODEL USED ON	ASS'Y. NO.
SCALE	CODE	

UNLESS OTHERWISE SPECIFIED DIMENSIONS ARE IN INCHES AND INCLUDE CHEMICALLY APPLIED OR PLATED FINISHES

DECIMALS	FRACTIONS
.X ± .05	± 1/64
.XX ± .01	ANGLES ± 0° 30'
.XXX ± .005	

NOTES

THE CONTENTS OF THIS DRAWING ARE THE EXCLUSIVE PROPERTY OF THE TECHNICAL MATERIEL CORP. ITS UNAUTHORIZED USE OR REPRODUCTION IN WHOLE OR IN PART IS STRICTLY FORBIDDEN.

SPP-2A11 A