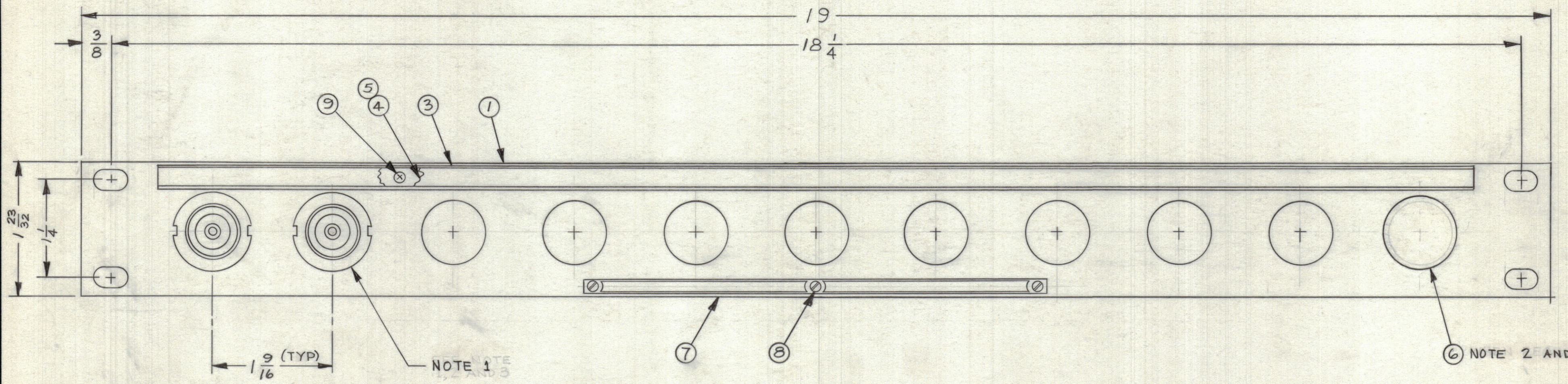


REVISIONS					
ZONE	SYM	DESCRIPTION	DATE	E.M.N. NO.	APPD

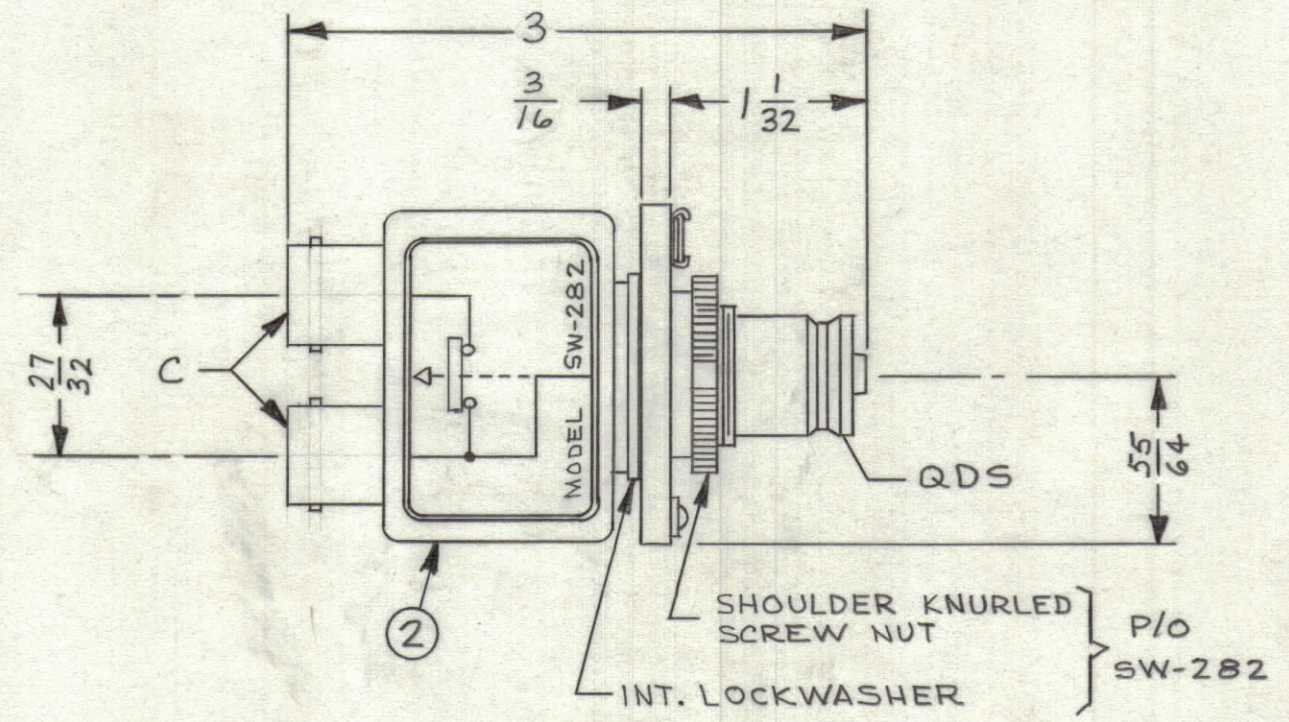


MODEL DESIGNATION

SPP-14 A 11

BASIC MODEL PANEL HEIGHT NO. OF JACK SWITCHES

SPP-14A 11	11	0
SPP-14A 10	10	1
SPP-14A 9	9	2
SPP-14A 8	8	3
SPP-14A 7	7	4
SPP-14A 6	6	5
SPP-14A 5	5	6
SPP-14A 4	4	7
SPP-14A 3	3	8
SPP-14A 2	2	9
SPP-14A 1	1	10
MODEL	QUAN. ITEM 2	QUAN. ITEM 6



NOTES:

1. SWITCHES (ITEM 2) ARE MOUNTED FROM LEFT TO RIGHT.
2. WHEN SWITCH MOUNTING HOLES ARE NOT UTILIZED, PLUG BUTTONS (ITEM 6) ARE MOUNTED ON FACE OF PANEL.
3. REFER TO CHART FOR APPLICATION OF PLUG BUTTON (ITEM 6) WHEN REQUIRED.

REQ'D.	ITEM	PART NUMBER	DESCRIPTION	SYMBOL
X	12	S-692	TEST PROCEDURE	
1	11	TG-100	TAG, WARNING	
1	10	TP-109	WRENCH, SOCKET (LOOSE ITEM)	
6	9	SCFP0348BN5	SCREW, MACHINE	
3	8	SFB0256SN3	SCREW, THREAD CUTTING	
1	7	NP-251	NAMEPLATE, IDENTIFICATION	
SEE CHART	6	HB-101-5-G	BUTTON, PLUG	
1	5	PX-464-17	GUARD, TAB	
1	4	PR-102-17	TAB, PAPER	
1	3	MS-1656	HOLDER, CARD	
SEE CHART	2	SW-282	SWITCH, RF	
1	1	MS-1657	MACHINING, FRONT PANEL	

MATERIAL		LIST OF MATERIAL	
ALUMINUM		THE TECHNICAL MATERIEL CORP.	
SEMI-GLOSS ENAMEL		MAMARONECK, NEW YORK	
FINISH TMC SMOOTH GRAY SEMI-GLOSS ENAMEL		TITLE PATCH PANEL, RF SWITCHING SINGLE QDS TO DUAL C	
DRAWN M TANTILLO	DATE 1-21-63	FINAL APPROVAL	DATE
CHECKED	DATE		
DECIMALS .X ± .05 .XX ± .01 .XXX ± .005	TOLERANCES	FRACTIONS ± 1/64 ANGLES ± 0° 30'	ELECT. DES. DATE
UNLESS OTHERWISE SPECIFIED DIMENSIONS ARE IN INCHES AND INCLUDE CHEMICALLY APPLIED OR PLATED FINISHES		MECH. DES. DATE	SHEET

QTY./UNIT	MODEL USED ON	ASS'Y. NO.
SCALE	CODE	

THE CONTENTS OF THIS DRAWING ARE THE EXCLUSIVE PROPERTY OF THE TECHNICAL MATERIEL CORP. ITS UNAUTHORIZED USE OR REPRODUCTION IN WHOLE OR IN PART IS STRICTLY FORBIDDEN.

NOTES

SPP-14 A 11