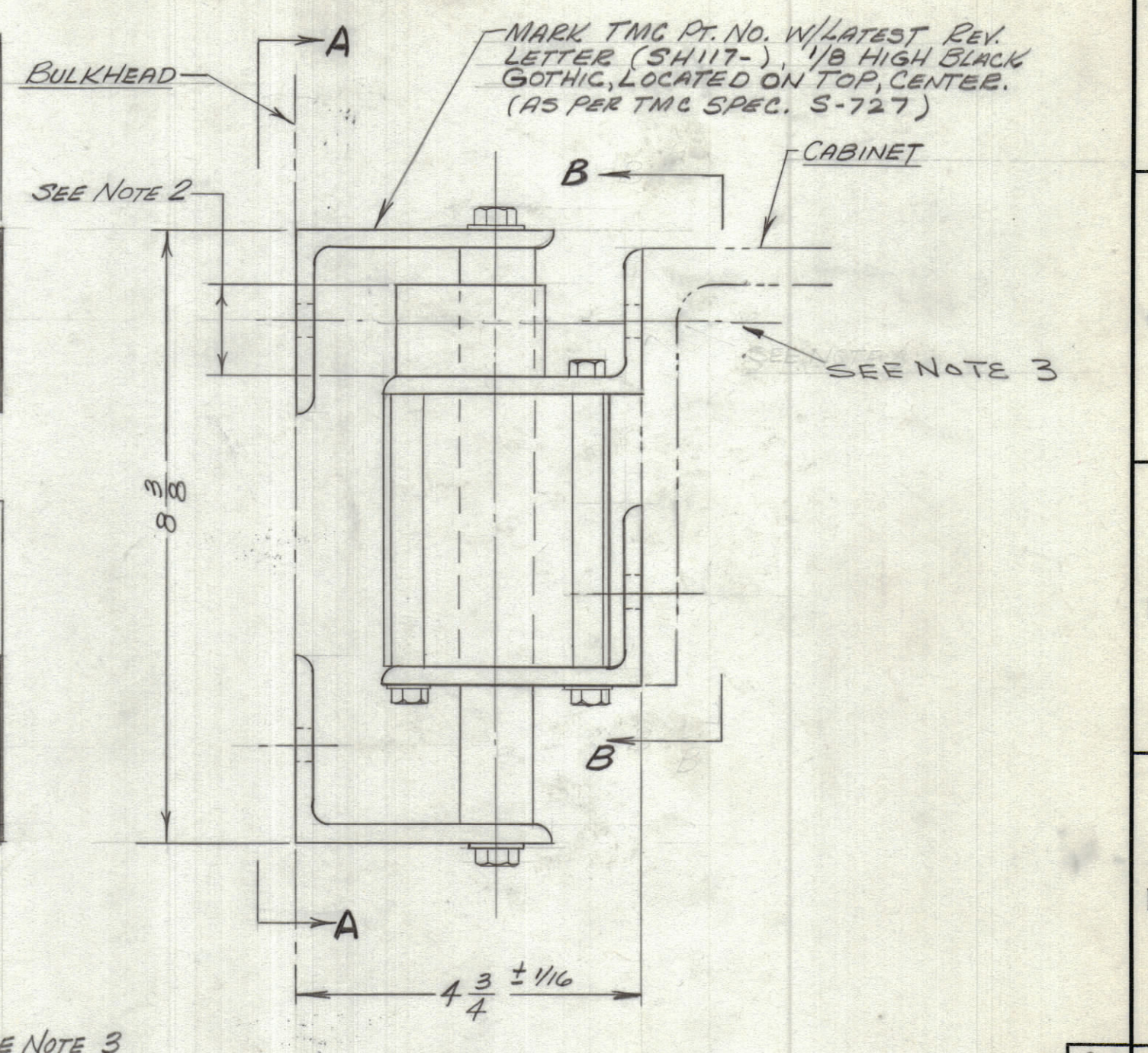
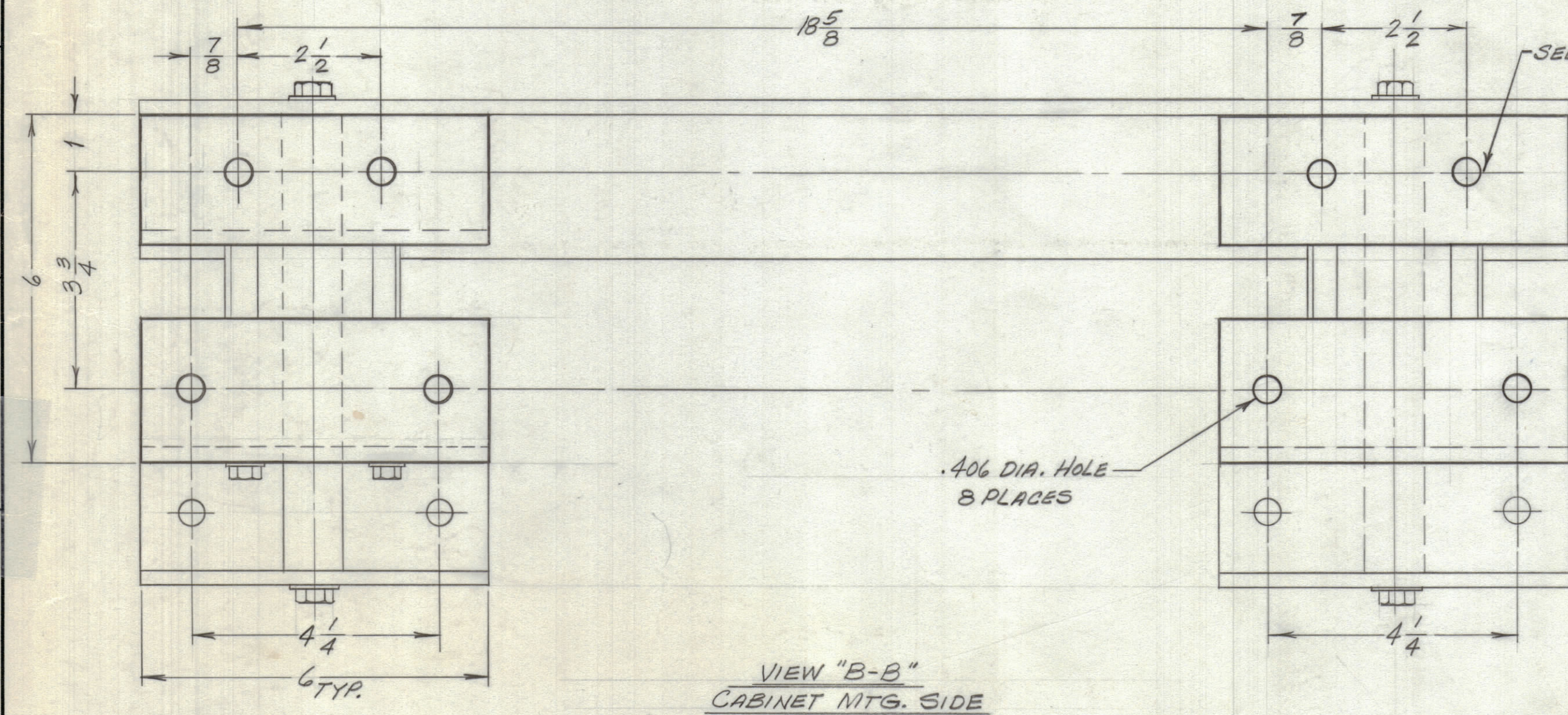
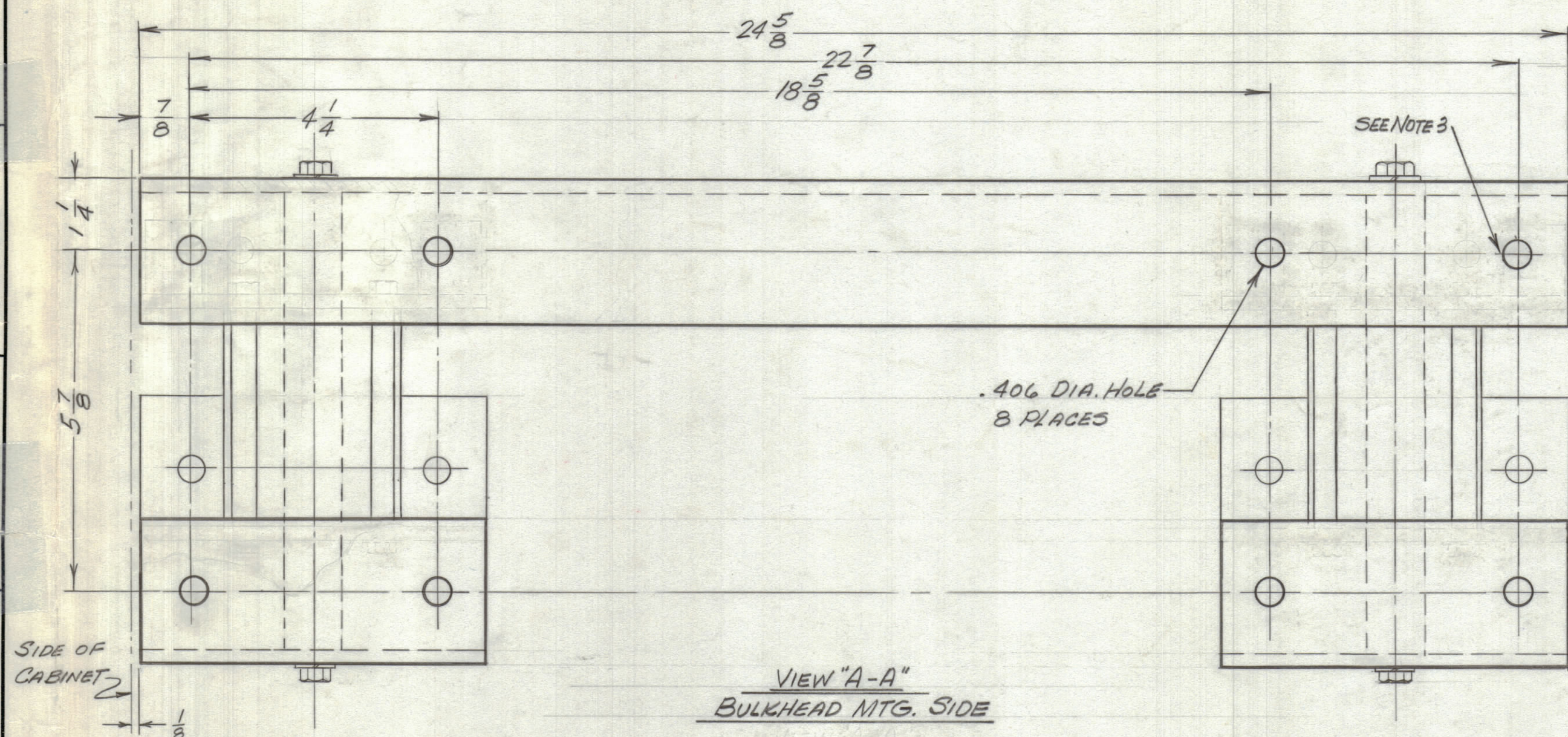


REVISIONS							
ZONE	SYM	DESCRIPTION	DATE	E.M.N. NO.	DRAFT	CHKD	APPD
	Ø	ORIGINAL RELEASE FOR PRODUCTION	6/24/65				



- NOTES
1. MAX. RADIAL TRAVEL = 1/2
  2. MAX. UPWARD DISPLACEMENT = 1/4
  3. HOLES IN CABINET & BULKHEAD SHOULD FALL ON SAME HORIZONTAL PLANE FOR OPTIMUM PERFORMANCE.
  4. FINISH: PHOSPHATE TREATED PER MIL-C-490 GRADE I (BONDERIZE OR EQUIVALENT) AFTER WHICH SURFACE SHALL BE PRIMED WITH ZINC CHROMATE PRIMER TYPE I IN ACCORDANCE WITH THE LATEST VERSION OF MIL-P-6889 AND FINISHED WITH LIGHT GRAY ENAMEL PER MIL-E-15090B CLASS 2.

SH117

QTY./UNIT	DDR-5K	MODEL USED ON	ASS'Y. NO.
SCALE	1/16"	CODE	5401-168 (20372-1)

THE CONTENTS OF THIS DRAWING ARE THE EXCLUSIVE PROPERTY OF THE TECHNICAL MATERIEL CORP. ITS UNAUTHORIZED USE OR REPRODUCTION IN WHOLE OR IN PART IS STRICTLY FORBIDDEN.

REQ'D.	ITEM	PART NUMBER	DESCRIPTION	SYMBOL
LIST OF MATERIAL				
MATERIAL	---	THE TECHNICAL MATERIEL CORP. MAMARONECK, NEW YORK		
FINISH	---	TITLE: STABILIZER, MOUNTING, SHOCK		
UNLESS OTHERWISE SPECIFIED DIMENSIONS ARE IN INCHES AND INCLUDE CHEMICALLY APPLIED OR PLATED FINISHES		DRAWN	DATE	FINAL APPROVAL
DECIMALS .X ± .05 .XX ± .01 .XXX ± .005		H. AUSTIN	6-24-65	[Signature]
FRACTIONS 1/64 ANGLES ± 0° 30'		CHECKED	DATE	DATE
TOLERANCES		[Signature]	6/24/65	6/25/65
		ELECT. DES.	DATE	
		MECH. DES.	DATE	
			6-24-65	
				REV. LTR.

STANDARD DRAWING

NOTES