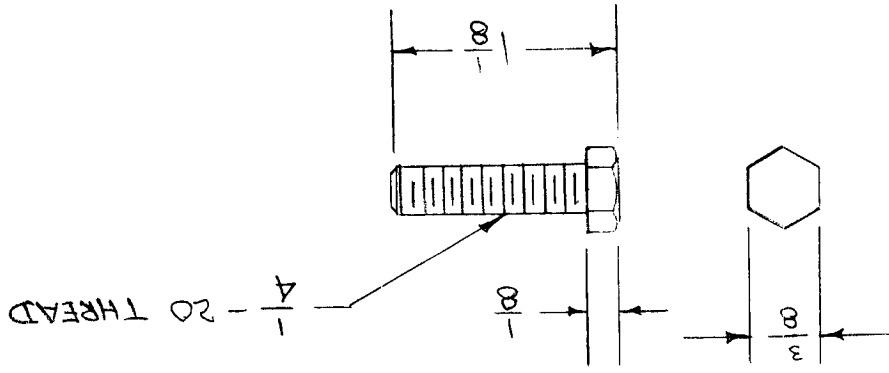


ALL OTHERS		DEC. DIM. $\pm$		FRAC. DIM. $\pm$		ANGULAR DIM. $\pm$	
TOLERANCES							
ISSUE		ITEM		CHANGED FROM		SCALE	
REVISION, NO CHANGE		---		---		---	
DATE		CN. NO.		DRAFTS CHECKER		ENG. APP.	
---		---		---		---	
DRILL, PUNCH, COMMERCIAL STOCK SIZES AND MANUFACTURERS TOLERANCES ARE NOT INCLUDED.				FINISH & SPEC. NO.			
8-105 OADMIUM PLATE				HEAT TREAT. SPEC.			
---				---			
---				TYPE & TEMPER			
---				---			
MATERIAL		WEIGHT PER PC.		STOCK SIZE		PART NO.	
STEEL		---		---		REQ. ITEM	
---		---		---		DESCRIPTION	
---		---		---		SYMBOL	
THE TECHNICAL MATERIEL CORP. MAMARONECK, NEW YORK				DRAWN			
BOLT, HEX HEAD				ELEC. DES. APP.			
---				MECH. DES. APP.			
---				CHECKED			
---				FINAL APPROVAL			
---				SC-101			



MODEL	PROJECT NO.	ASS'Y. NO.	DATE
KS-85-X	5-227	A-498	1/2/54
BAC-3-5-500	153	A-135	9-6-52
BAC-2-5-20	108	A-107	7-9-52
BAC-3-5-20	108	A-108	7-9-51
RAC	112	A-101	7-8-51

IF IT IS FOUND DESIRABLE TO CHANGE ANY TOLERANCE OR OTHER DETAIL SPECIFIED ON THIS DRAWING NOTIFY THE PURCHASER PROMPTLY.

MAXIMUM ALLOWABLE TOLERANCES HAVE BEEN DETERMINED AND DEVIATIONS WILL BE CAUSE FOR REJECTION. REMOVE ALL BURRS AND SHARP EDGES

USED ON

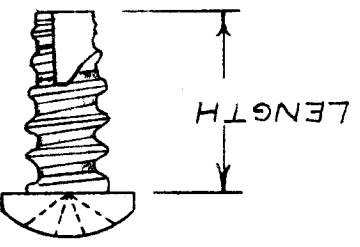
SC-101

ALL OTHERS		DEC. DIM. ±		FRAC. DIM. ±		ANGULAR DIM. ±	
TOLERANCES							
ISSUE ITEM		CHANGED FROM		DATE	CN. NO.	DRAFTS CHECKER	ENG. APP.
A 1 REDRAWN		11-20-52				WDC	WDC
B 1 ADDED SUPERSEDED CHART & NOTE		5-18-63 6551				RC	SMZ
SCALE							
FINISH & SPEC. NO.		CAD. PLATE S-105					
HEAT TREAT. SPEC.		HARDENED					
CHECKED		E.O.D. 11-20-52					
DRAWN		WDC 11-20-52					
ELEC. DES. APP.							
MECH. DES. APP.							
FINAL APPROVAL							
SC-102 B							

REF: SHAKEPROOF INC. TYPE 23

REQ. ITEM	PART NO.	DESCRIPTION	SYMBOL
		THE TECHNICAL MATERIEL CORP. MAMARONECK, NEW YORK	
		STEEL	
		SCREW, THREAD CUTTING	
		PHILLIPS, PAN HD. STYLE	
		WDC 11-20-52	
		ELEC. DES. APP.	
		MECH. DES. APP.	
		FINAL APPROVAL	
		SC-102 B	

T.M.C. NO.	SC. SIZE	LENGTH	SC. SIZE	LENGTH	T.M.C. NO.
SC-102-1	2-56	1/4	SFB0256SN4	5	SC-102-2
SC-102-2	2-56	5/16	SFB0256SN 6	6	SC-102-3
SC-102-3	2-56	3/8	SFB0440SN 5	5	SC-102-4
SC-102-4	4-40	5/16	SFB0440SN 5	5	SC-102-5
SC-102-5	4-40	3/8	SFB0440SN 5	5	SC-102-6
SC-102-6	4-40	7/16	SFB0440SN 5	5	SC-102-7
SC-102-7	4-40	1/2	SFB0440SN 8	8	SC-102-8
SC-102-8	6-32	5/16	SFB0632SN 5	5	SC-102-9
SC-102-9	6-32	3/8	SFB0632SN 5	5	SC-102-10
SC-102-10	6-32	7/16	SFB0632SN 8	8	SC-102-11
SC-102-11	6-32	1/2	SFB0632SN 8	8	SC-102-12
SC-102-12	8-32	5/16	SFB0832SN 5	5	SC-102-13
SC-102-13	8-32	3/8	SFB0832SN 5	5	SC-102-14
SC-102-14	8-32	7/16	SFB0832SN 8	8	SC-102-15
SC-102-15	8-32	1/2	SFB0832SN 8	8	



SUPERSEDED AS SHOWN IN CHART

IF IT IS FOUND DESIRABLE TO CHANGE ANY TOLERANCE OR OTHER DETAIL SPECIFIED ON THIS DRAWING NOTIFY THE PURCHASER PROMPTLY.

MAXIMUM ALLOWABLE TOLERANCES HAVE BEEN DETERMINED AND DEVIATIONS WILL BE CAUSE FOR REJECTION. REMOVE ALL BURRS AND SHARP EDGES

STANDARD DRAWING

USED ON

MODEL PROJECT NO. ASSY. NO. DATE

SC-102 B

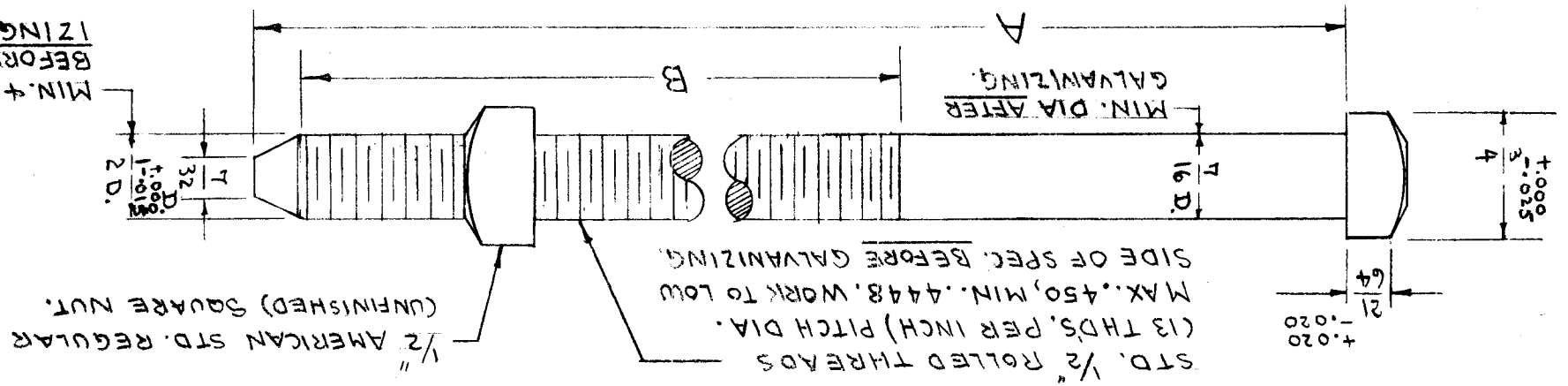
ALL OTHERS		DEC. DIM. $\pm$		FRAC. DIM. $\pm$		ANULAR DIM. $\pm$	
TOLERANCES							
ISSUE ITEM		CHANGED FROM		DATE	CN. NO.	DRAFTS CHECKER	ENG. APP.
A	A	COLUMN ADDED		10/8/52	1	RJD	RJD
SCALE FULL							
TOLERANCES ARE NOT INCLUDED. DRILL, PUNCH, COMMERCIAL STOCK SIZES AND MANUFACTURERS							
FINISH & SPEC. NO.							
HEAT TREAT. SPEC.							
SEE NOTE							
DRAWN							
ELEC. DES. APP.							
MECH. DES. APP.							
CHECKED							
RJD 8/29/52							
FINAL APPROVAL							
SC-103							
A							

REQ. ITEM	PART NO.	DESCRIPTION	SYMBOL
SC-103-4	9707	7 1/4	5
SC-103-3	9710	10 1/4	6
SC-103-2	9709	9 1/4	6
SC-103-1	9708	8 1/4	6
TMC NO	STOCK NO	A	B

REF.: HUBBARD & CO.

NOTE: 1 - BOLTS SHALL BE MADE OF STRUCTURAL STEEL, ASTM SPEC. A-7-36 (OR LATEST REVISION), HAVING A TENSILE STRENGTH OF 60,000 TO 72,000 LBS. PER SQ. INCH AND A MINIMUM ELONGATION IN TWO (2) INCHES OF 22%.

2 - NUTS SHALL BE MADE FROM OPEN HEARTH RESULPHURIZED NUT STOCK ASTM SPEC. A-107-36 (OR LATEST REVISION) GRADE NO. 27.

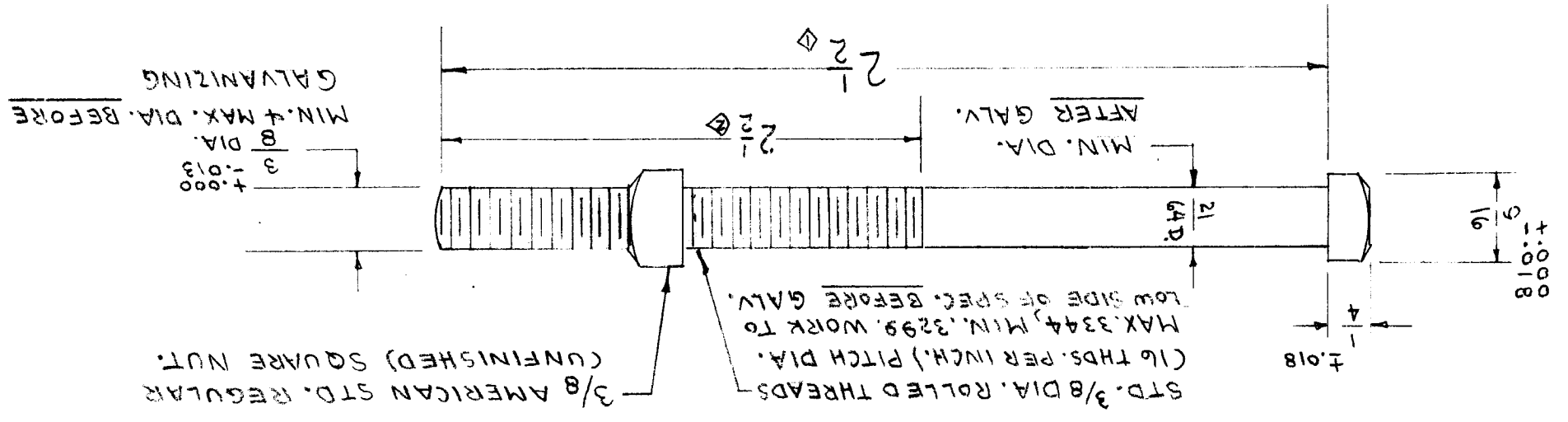


IF IT IS FOUND DESIRABLE TO CHANGE ANY TOLERANCE OR OTHER DETAIL SPECIFIED ON THIS DRAWING NOTIFY THE PURCHASER PROMPTLY.		MAXIMUM ALLOWABLE TOLERANCES HAVE BEEN DETERMINED AND DEVIATIONS WILL BE CAUSE FOR REJECTION. REMOVE ALL BURRS AND SHARP EDGES	
RELEASED		MODEL	PROJECT NO.
USED ON		ASS'Y. NO.	DATE
SC-103		A-127	8-22-52

ALL OTHERS		DEC. DIM. $\pm$		ANGULAR DIM. $\pm$		TOLERANCES		SCALE FULL		DRILL, PUNCH, COMMERCIAL STOCK SIZES AND MANUFACTURERS TOLERANCES ARE NOT INCLUDED.	
ISSUE		CHANGED FROM		DATE		CN. NO.		DRAFTS CHECKER		ENG. APP.	
A		3"		11/18/52		1		H.A.		R.T.	
ITEM		DRAWN		ELEC. DES. APP.		MECH. DES. APP.		CHECKED		FINAL APPROVAL	
A		C.D.D. 8-21-52						R.T. 8/29/52			
REQ. ITEM		PART NO.		DESCRIPTION		SYMBOL		MATERIAL		FINISH & SPEC. NO.	
				THE TECHNICAL MATERIEL CORP. MAMARONECK, NEW YORK				STEEL		SEE NOTE	
				BOLT, MACHINE				WEIGHT PER PC.		HEAT TREAT. SPEC.	
										SEE NOTE	
										TYPE & TEMPER	
										C.D.D. 8-21-52	
										DRAWN	
										ELEC. DES. APP.	
										MECH. DES. APP.	
										SC-104 A	

NOTE: 1.- MACHINE BOLTS 6" OR LESS IN LENGTH AND 5/8" IN DIA. AND SMALLER, MAY BE MADE BY THE COLD HEADING PROCESS FROM COLD DRAWN STEEL WIRE, HAVING A MINIMUM TENSILE STRENGTH OF 60,000 TO 72,000 LBS. PER SQ. INCH AND A MINIMUM ELONGATION IN TWO(2) INCHS OF 15%.  
 2.- NUTS SHALL BE MADE FROM OPEN HEARTH RESULPHURIZED NUT STOCK, ASTM SPEC. A-107-36 (OR LATEST REVISION) GRADE NO. 27.

REF: HUBBARD + CO. STOCK NO. 9602 1/2

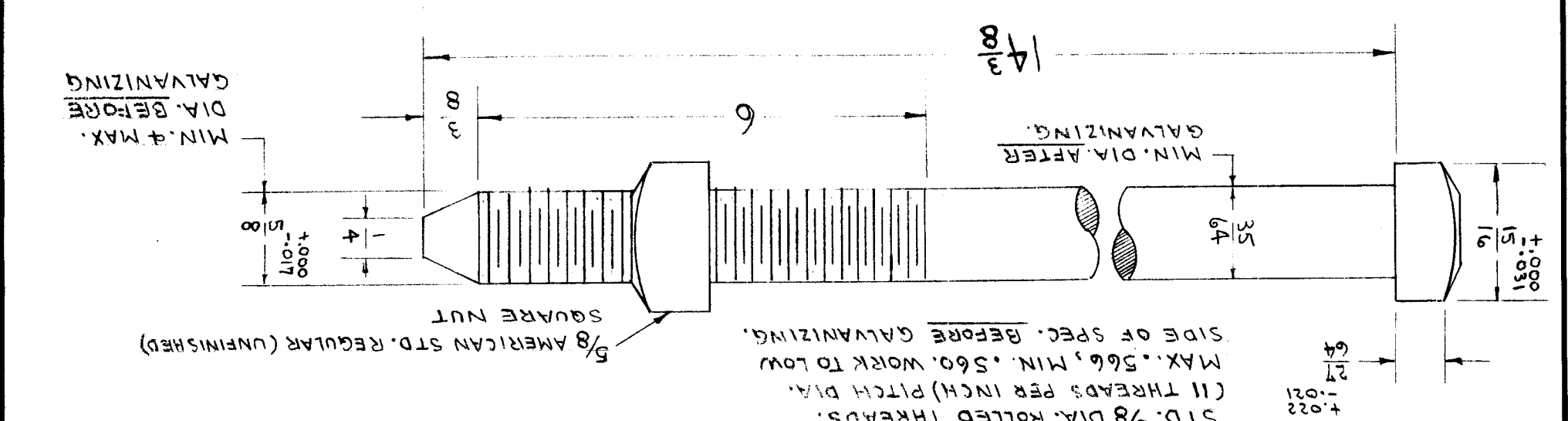


IF IT IS FOUND DESIRABLE TO CHANGE ANY TOLERANCE OR OTHER DETAIL SPECIFIED ON THIS DRAWING NOTIFY THE PURCHASER PROMPTLY.		MAXIMUM ALLOWABLE TOLERANCES HAVE BEEN DETERMINED AND DEVIATIONS WILL BE CAUSE FOR REJECTION. REMOVE ALL BURRS AND SHARP EDGES	
RELEASED		USED ON	
SC-104 A		MODEL	
		PROJECT NO.	
		ASSY. NO.	
		DATE	
		A-127	
		# 141	
		8-21-52	

ALL OTHERS		DEC. DIM. $\pm$		FRAC. DIM. $\pm$		AN ULAR DIM. $\pm$	
ISSUE ITEM		CHANGED FROM		DATE		CN. NO.	
DRAFTS CHECKER		ENG. APP.		SCALE		TOLERANCES	
DRILL, PUNCH, COMMERCIAL STOCK		SIZES AND MANUFACTURERS		TOLERANCES ARE NOT INCLUDED.		FINISH & SPEC. NO.	
HEAT TREAT. SPEC.		SEE NOTE		SEE NOTE		SC-105	
TYPE & TEMPER		C.O.D. 8-21-51		DRAWN		CHECKED	
MATERIAL		STEEL		ELEC. DES. APP.		MECH. DES. APP.	
WEIGHT PER PC.		SEE NOTE		MAMARONECK, NEW YORK		THE TECHNICAL MATERIEL CORP.	
STOCK SIZE		BOLT, MACHINE		MAMARONECK, NEW YORK		THE TECHNICAL MATERIEL CORP.	
REQ. ITEM		PART NO.		DESCRIPTION		SYMBOL	

NOTE: 1.- BOLTS SHALL BE MADE OF STRUCTURAL STEEL, ASTM SPEC. A-7-36 (OR LATEST REVISION) HAVING A TENSILE STRENGTH OF 60,000 TO 72,000 LBS. PER SQ. INCH, AND A MINIMUM ELONGATION IN TWO (2) INCHES OF 22%.  
 2.- NUTS SHALL BE MADE FROM OPEN HEARTH RESULTURIZED NUT STOCK, ASTM SPEC. A-107-36 (OR LATEST REVISION) GRADE NO. 27.

REF.: HUBBARD & CO. STOCK NO. 9814



IF IT IS FOUND DESIRABLE TO CHANGE ANY TOLERANCE OR OTHER DETAIL SPECIFIED ON THIS DRAWING NOTIFY THE PURCHASER PROMPTLY.		MAXIMUM ALLOWABLE TOLERANCES HAVE BEEN DETERMINED AND DEVIATIONS WILL BE CAUSE FOR REJECTION. REMOVE ALL BURRS AND SHARP EDGES	
USED ON		MODEL	
SC-105		# 141	
DATE		PROJECT NO.	
A-127		A-127	
8-21-52		8-21-52	

RELEASED

IF IT IS FOUND DESIRABLE TO CHANGE ANY TOLERANCE OR OTHER DETAIL SPECIFIED ON THIS DRAWING NOTIFY THE PURCHASER PROMPTLY.

# STANDARD DRAWING

SC-106 B

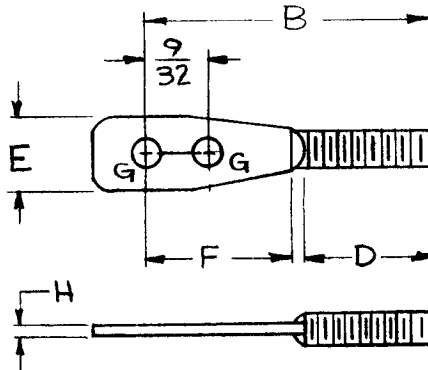
MAXIMUM ALLOWABLE TOLERANCES HAVE BEEN DETERMINED AND DEVIATIONS WILL BE CAUSE FOR REJECTION. REMOVE ALL BURRS AND SHARP EDGES

USED ON

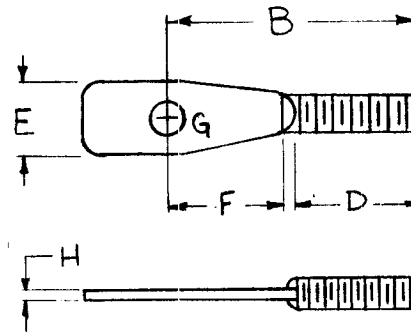
MODEL PROJECT NO. ASS'Y. NO. DATE

TMC NO.	CAT. NO.	THD.	B	D	E	F	G (HOLE)	H	STYLE	MFG. REF.
SC-106-1	2008	6-32	9/16	9/32	1/4	1/4	.141	.045	1	A
SC-106-2	4211 MOD.	6-32	27/32	9/32	1/4	1/2	.138	3/64	2	B
SC-106-3	4215 MOD.	4-40	15/32	1/4	7/32	5/32	.067	.031	1	B

DIMENSIONS FOR REFERENCE ONLY.



STYLE-2



STYLE-1

MFG REF	B	AMATON ELECTRONIC HARDWARE		
	A	UNITED SCREW & BOLT CORP.		
REQ. ITEM	PART NO.	DESCRIPTION		SYMBOL
		THE TECHNICAL MATERIEL CORP.		
		MAMARONECK. NEW YORK		
		BOLT, SPADE		
		REGULAR TYPE		
		CDD. 8-27-52	G.T.O	<i>[Signature]</i>
		DRAWN	ELEC. DES. APP.	MECH. DES. APP.
		MADE 9-26-52		<i>[Signature]</i>
		CHECKED	FINAL APPROVAL	
		CAD. PLATE	SC-106 B	
		S-105		
		FINISH & SPEC. N.		

B	1	SC-106-3 ADDED	1/12/68	187/2	<i>[Signature]</i>	<i>[Signature]</i>	OP
A	2	STYLE (2) ADDED	2-19-63	8258	<i>[Signature]</i>	<i>[Signature]</i>	
T		SC-106-2 ADDED					
ISSUE	ITEM	CHANGED FROM	DATE	CN. NO.	DRAFTS	CHECKER	ENG. APP.

TOLERANCES		SCALE	DRILL, PUNCH, COMMERCIAL STOCK SIZES AND MANUFACTURERS TOLERANCES ARE NOT INCLUDED.	
ALL OTHERS	DEC. DIM. ± FRAC. DIM. ± ANGULAR DIM. ±			

IF IT IS F UND DESIRABLE TO CHANGE ANY TOLERANCE OR THEN DETAIL SPECIFIED ON THIS DRAWING NOTIFY THE PURCHASER PROMPTLY.

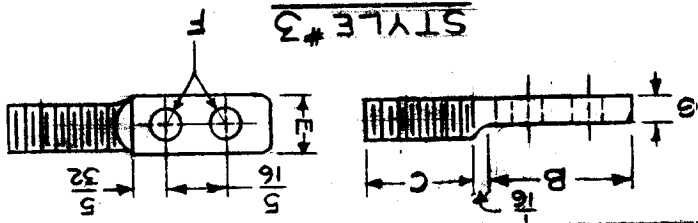
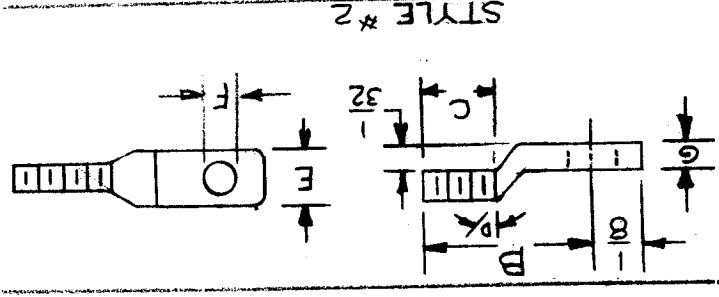
MAXIMUM ALLOWABLE TOLERANCES HAVE BEEN DETERMINED AND DEVIATIONS WILL BE CAUSE FOR REJECTION. REMOVE ALL BURRS AND SHARP EDGES

**RELEASED**

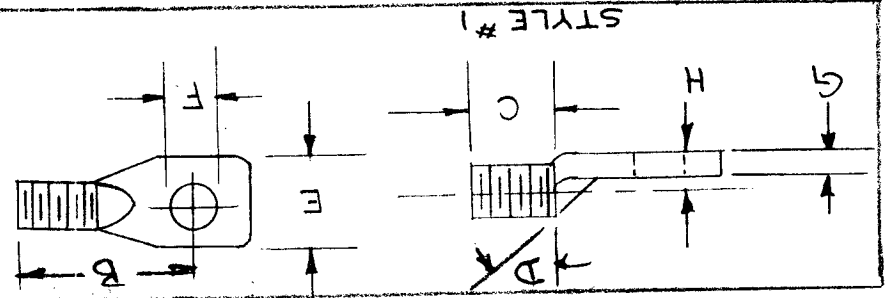
**STANDARD DRAWING**

USED ON

TMC NO.	CAT. NO.	THD.	B	C	D	E	F	G	H	STYLE REF.	MFG.
SC-107-1	2672	6-32	9/16	5/16	45°	15/64	.141	.048	.092	1	A
SC-107-2	4214	6-32	15/16	3/8	45°	15/64	.125	.048	—	2	B
SC-107-3	A24C10-2114	10-32	21/32	9/16	—	5/16	.136	.070	—	3	C

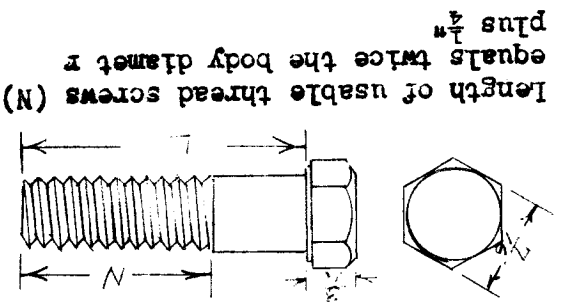


- (A) S401-297
- (B) S401-89
- (C) S401-296



ALL THERMS		DEC. DIM. ±		ANGULAR DIM. ±		TOLERANCES ARE NOT INCLUDED.		DRILL, PUNCH, COMMERCIAL STOCK		SIZES AND MANUFACTURERS		FINISH & SPEC. N.		SC-107		B			
ISSUE		ITEM		CHANGED FROM		DATE		CN. NO.		DRAFTS		CHECKER		ENG. APP.		SCALE		TOLERANCES	
A		1		SC-107-2 ADDED TO CHART		22/16/299		G.S.		OK		OK		OK		#		HEAT TREAT. SPEC.	
B		2		STYLE #1 & #2 ADDED TO CHART														CAP. PLATE	
		3		MFG. REF. NAMES DELETED														C.A.D. PLATE	
		4		SC-107-3 ADD. TO CHART														S-105	
DESCRIPTION		PART NO.		REQ. ITEM		STOCK SIZE		MATERIAL		WEIGHT PER PC.		TYPE & TEMPER		DRAWN		ELEC. DES. APP.		MECH. DES. APP.	
BOLT, SPADE		#		STEEL		#		#		#		#		C.P.O. 8-21-52		G.T.O.		9/1/52	
THE TECHNICAL MATERIEL CORP.		MAMARONECK		NEW YORK		OFFSET TYPE													

A	SC-108	FINISH & SPEC. NO.		PASSIVATE S-104	DRILL, PUNCH, COMMERCIAL STOCK SIZES AND MANUFACTURERS TOLERANCES ARE NOT INCLUDED.	DEC. DIM. $\pm$		ALL OTHERS	
		HEAT TREAT. SPEC.				ANGULAR DIM. $\pm$			
CHECKED		FINAL APPROVAL		SCALE		TOLERANCES			
DRAWN		ELEC. DES. APP.		MECH. DES. APP.		DATE		ISSUE ITEM	
TYPE & TEMPER		304 or 316		304 or 316		22-63		1	
MATERIAL		STAINLESS STEEL		STAINLESS STEEL		8597		SUPERSEDED, ADDED TO CHART	
STOCK SIZE		1/2 X 20 N.C. CLASS-2		1/2 X 20 N.C. CLASS-2		22-63		1	
DESCRIPTION		THE TECHNICAL MATERIEL CORP. MAMARONECK, NEW YORK		HEX HEAD CAP SCREW		1/2 X 20 N.C. CLASS-2, STAINLESS		1	
SYMBOL		PART NO.		REQ. ITEM		CHANGED FROM		ISSUE ITEM	



SC-108-1	3/8	SCHH2520SS6
SC-108-2	5/8	
SC-108-3	3/4	
SC-108-4	7/8	
SC-108-5	1	
SC-108-6	1-1/4	
SC-108-7	1-1/2	
SC-108-8	1-3/4	
SC-108-9	2	
SC-108-10	2-1/4	
SC-108-11	2-3/4	
SC-108-12	3	
SC-108-13	3-1/4	
SC-108-14	3-1/2	
SC-108-15	3-3/4	
SC-108-16	4	

IF IT IS FOUND DESIRABLE TO CHANGE ANY TOLERANCE OR OTHER DETAIL SPECIFIED ON THIS DRAWING NOTIFY THE PURCHASER PROMPTLY.

MAXIMUM ALLOWABLE TOLERANCES HAVE BEEN DETERMINED AND DEVIATIONS WILL BE CAUSE FOR REJECTION. REMOVE ALL BURRS AND SHARP EDGES

STANDARD DRAWING

SC-108

USED ON

MODEL PROJECT NO. ASSY. NO. DATE

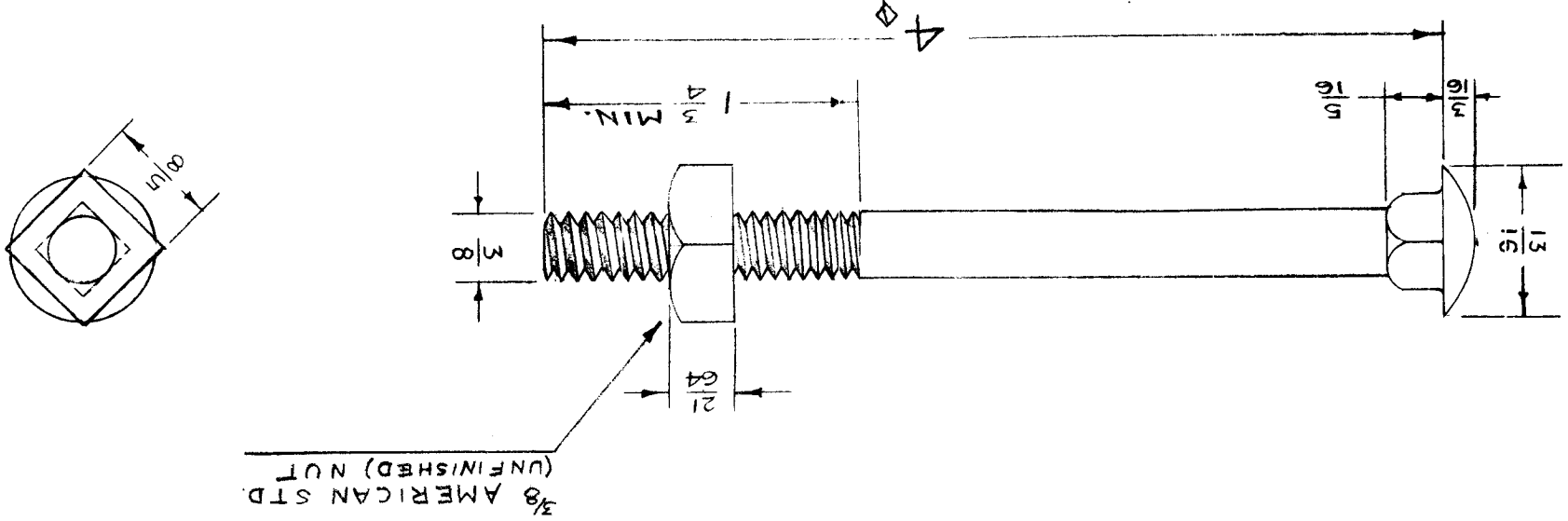


IF IT IS FOUND DESIRABLE TO CHANGE ANY TOLERANCE OR OTHER DETAIL SPECIFIED ON THIS DRAWING NOTIFY THE PURCHASER PROMPTLY.

MAXIMUM ALLOWABLE TOLERANCES HAVE BEEN DETERMINED AND DEVIATIONS WILL BE CAUSE FOR REJECTION. REMOVE ALL BURRS AND SHARP EDGES

RELEASED

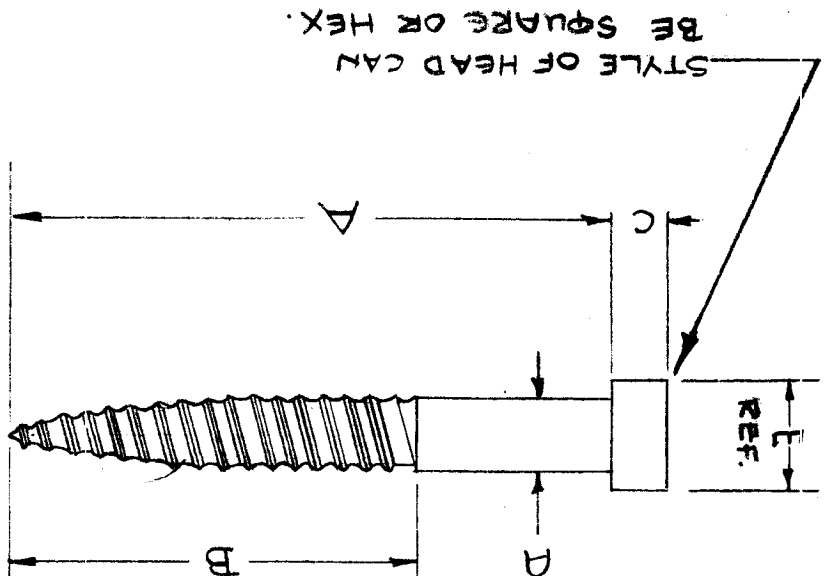
USED ON		MODEL	PROJECT NO.	ASSY. NO.	DATE
			141	A-127	10-14-52



ALL OTHERS		DEC. DIM. $\pm$		FRAC. DIM. $\pm$		ANGULAR DIM. $\pm$	
TOLERANCES		SCALE FULL SIZE		DRILL, PUNCH, COMMERCIAL STOCK		TOLERANCES ARE NOT INCLUDED.	
ISSUE ITEM	CHANGED FROM	DATE	CN. NO.	DRAFTS CHECKER	ENG. APP.	TYPE & TEMPER	
A 1	S.	11/8/52	1	ADD. R/S		ff	
MATERIAL		STOCK SIZE		WEIGHT PER PC.		HEAT TREAT. SPEC.	
STEEL		ff		ff		GALVANIZED	
DESCRIPTION		PART NO.		REQ. ITEM		FINISH & SPEC. NO.	
CARRIAGE BOLT						SC-109	
THE TECHNICAL MATERIEL CORP.		MAMARONECK, NEW YORK		DRAWN		CHECKED	
16 10-14-52		RAB 10-15-52		MECH. DES. APP.		FINAL APPROVAL	
SYMBOL		A		MECH. DES. APP.		SC-109	

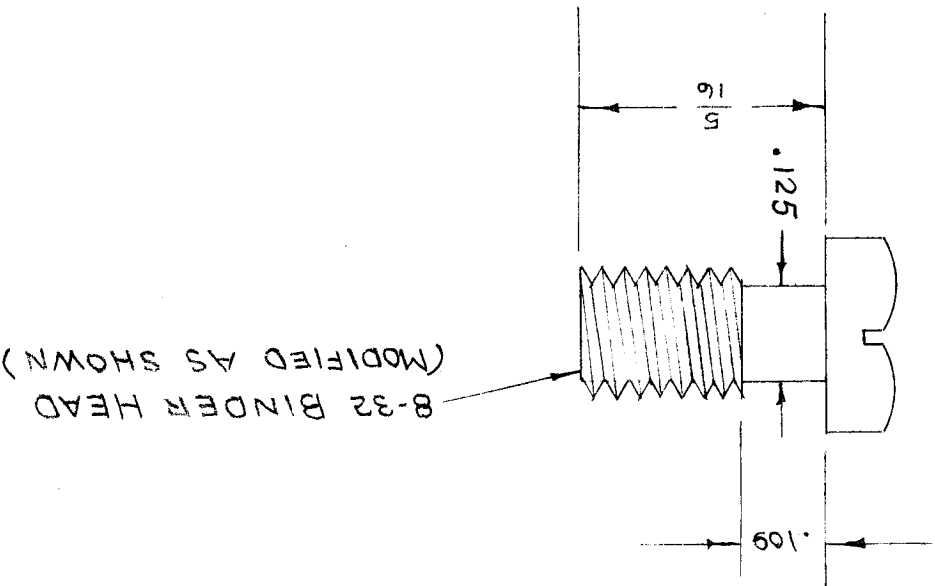
ALL OTHERS		DEC. DIM. $\pm$		FRAC. DIM. $\pm$		ANGULAR DIM. $\pm$		TOLERANCES ARE NOT INCLUDED.	
DRILL, PUNCH, COMMERCIAL STOCK		SIZES AND MANUFACTURERS		FINISH & SPEC. NO.		NICKEL PLATE		SC-111 G	
TOLERANCES		SCALE		HEAT TREAT. SPEC.		CHECKED		FINAL APPROVAL	
ISSUE	ITEM	CHANGED FROM	DATE	CN. NO.	DRAFTS	CHECKER	ENG. APP.	DRAWN	
A	1	GENERAL REVISION	12-10-52	1	W.S.	W.S.		R.A.B. 11/18/52	
B	2	FINISH WAS GALVANIZED	9/27/52	2	W.S.	W.S.		R.A.B. 11/18/52	
C	1	SC-111-5 & 6 ADDED	4/3/57	3	W.S.	W.S.		R.A.B. 11/18/52	
D	1	SC-111-7 ADDED	7/18-57	4	W.S.	W.S.		R.A.B. 11/18/52	
E	1	QNSC-111-7 (1/2" DIM ADDED TO B)	4-4-61	4559	M.A.F.	M.A.F.		R.A.B. 11/18/52	
F		FINISH BOX WAS "CADMIUM PLATE .0005" ADDED	8-5-62	16712	RME	RME		R.A.B. 11/18/52	
G		HEAD STYLE NOTE ADDED ADD "REF. TO E" DIM.	10-5-72	21682	W.S.	W.S.		R.A.B. 11/18/52	
REQ. ITEM		PART NO.		DESCRIPTION		SYMBOL		THE TECHNICAL MATERIAL COMPANY MAMARONECK, NEW YORK	
MATERIAL		WEIGHT PER PC.		STOCK SIZE		TYPE & TEMPER		BOLT, LAG	
STEEL		#		#		#		#	

TMC NO	A	B	C	D	E
SC-111-1	3	2	.268	3/8	.562
SC-111-2	3	2	.188	1/4	.375
SC-111-3	4	2 1/2	.188	1/4	.375
SC-111-4	5	3	.268	3/8	.562
SC-111-5	3	2	.348	1/2	.750
SC-111-6	5	3	.348	1/2	.750
SC-111-7	2	1 1/2	.203	5/16	.500



IF IT IS FOUND DESIRABLE TO CHANGE ANY TOLERANCE OR OTHER DETAIL SPECIFIED ON THIS DRAWING NOTIFY THE PURCHASER PROMPTLY.		REMOVED		SC-111 G	
MAXIMUM ALLOWABLE TOLERANCES HAVE BEEN DETERMINED AND DEVIATIONS WILL BE CAUSED BY REJECTION. REMOVE ALL BURRS AND SHARP EDGES.		USED ON		DATE	
PROJECT NO.		MODEL		ASSY. NO.	

ALL OTHERS		DEC. DIM. $\pm .005$		FRAC. DIM. $\pm \frac{1}{64}$		ANGULAR DIM. $\pm$	
TOLERANCES		CHANGED FROM		DATE	CN. NO.	DRAFTS CHECKER	ENG. APP.
SCALE		TYPE & TEMPER		MATERIAL		WEIGHT PER PC.	
HEAT TREAT. SPEC.		STOCK SIZE		DESCRIPTION		SYMBOL	
FINISH & SPEC. NO.		PART NO.		REQ. ITEM		PART NO.	
S-105 CAD. PLATE		STEEL		SCREW, CAPTIVE		THE TECHNICAL MATERIEL CORP. MAMARONECK, NEW YORK	
DRILL, PUNCH, COMMERCIAL STOCK SIZES AND MANUFACTURERS TOLERANCES ARE NOT INCLUDED.		TYPE & TEMPER		DRAWN		ELEC. DES. APP.	
S-105 CAD. PLATE		C.D.D. 12-16-52		MECH. DES. APP.		G.T.O.	
CHECKED		DRAWN		MECH. DES. APP.		G.T.O.	
FINAL APPROVAL		C.D.D. 12-16-52		MECH. DES. APP.		G.T.O.	
SC-112		C.D.D. 12-16-52		MECH. DES. APP.		G.T.O.	



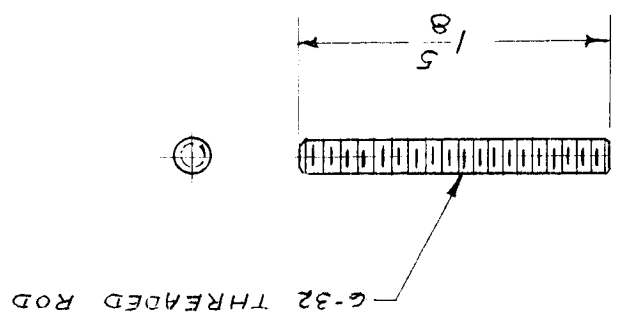
MODEL	PROJECT NO.	ASS'Y. NO.	DATE
F R R	104	A-317	12-16-52

USED ON		SC-112
---------	--	--------

IF IT IS FOUND DESIRABLE TO CHANGE ANY TOLERANCE OR OTHER DETAIL SPECIFIED ON THIS DRAWING NOTIFY THE PURCHASER PROMPTLY.  
 MAXIMUM ALLOWABLE TOLERANCES HAVE BEEN DETERMINED AND DEVIATIONS WILL BE CAUSE FOR REJECTION.  
 REMOVE ALL BURRS AND SHARP EDGES

RELEASED

ALL OTHERS		DEC. DIM. $\pm$		FRAC. DIM. $\pm$		ANGULAR DIM. $\pm$		TOLERANCES ARE NOT INCLUDED.		DRILL, PUNCH, COMMERCIAL STOCK SIZES AND MANUFACTURERS	
ISSUE ITEM		CHANGED FROM		DATE	CN. NO.	DRAFTS	CHECKER	ENG. APP.	SCALE		
A	1	FINISH WAS CADMIUM PL		1-18-55	1	M.D.	M.D.	W.D.			
REQ. ITEM		PART NO.	DESCRIPTION	SYMBOL							
6-32 THREADED ROD		THE TECHNICAL MATERIEL CORP.									
STOCK SIZE		MAMARONECK, NEW YORK									
STEEL		MOTOR THREADED STUD									
MATERIAL		MODEL VOX									
WEIGHT PER PC.		PP. 1-18-55									
TYPE & TEMPER		DRAWN									
HEAT TREAT. SPEC.		ELEC. DES. APP.									
FINISH & SPEC. NO.		MECH. DES. APP.									
S-101 CAUSTIC DIP		CHECKED									
AMS-383 SUPERSCEDES		FINAL APPROVAL									
SC-113		A									



REQ. PER UNIT	MODEL	PROJECT NO.	ASSY. NO.	DATE
1	VOX	291		1-18-55
1	VOX-1			1-18-55

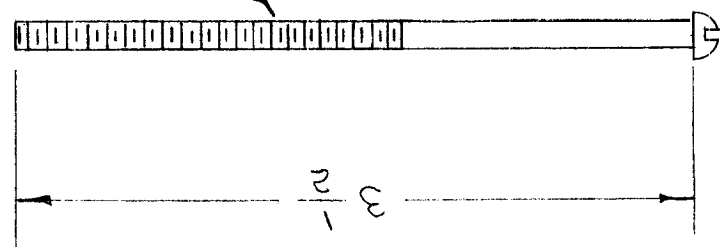
IF IT IS FOUND DESIRABLE TO CHANGE ANY TOLERANCE OR OTHER DETAIL SPECIFIED ON THIS DRAWING NOTIFY THE PURCHASER PROMPTLY.  
 MAXIMUM ALLOWABLE TOLERANCES HAVE BEEN DETERMINED AND DEVIATIONS WILL BE CAUSE FOR REJECTION. REMOVE ALL BURRS AND SHARP EDGES

USED ON

SC-113 A

ALL OTHERS		DEC. DIM. $\pm$		FRAC. DIM. $\pm$		ANGULAR DIM. $\pm$		TOLERANCES		TOLERANCES ARE NOT INCLUDED.		DRILL, PUNCH, COMMERCIAL STOCK		SIZES AND MANUFACTURERS		FINISH & SPEC. NO.	
ISSUE ITEM		CHANGED FROM		DATE		CN. NO.		DRAFTS		CHECKER		ENG. APP.		SCALE		HEAT TREAT. SPEC.	
MATERIAL		WEIGHT PER PC.		TYPE & TEMPER		DRAWN		ELEC. DES. APP.		MECH. DES. APP.		CHECKED		FINAL APPROVAL		SC-114	
REQ. ITEM		PART NO.		STOCK SIZE		MATERIAL		ROUND HEAD		DOD 4-1-53		H. J. Jo		M.H.S.		NONE	
DESCRIPTION		SYMBOL		THE TECHNICAL MATERIEL CORP.		MAMARONECK, NEW YORK		SCREWS, MACHINE		SC-114		SC-114		SC-114		SC-114	

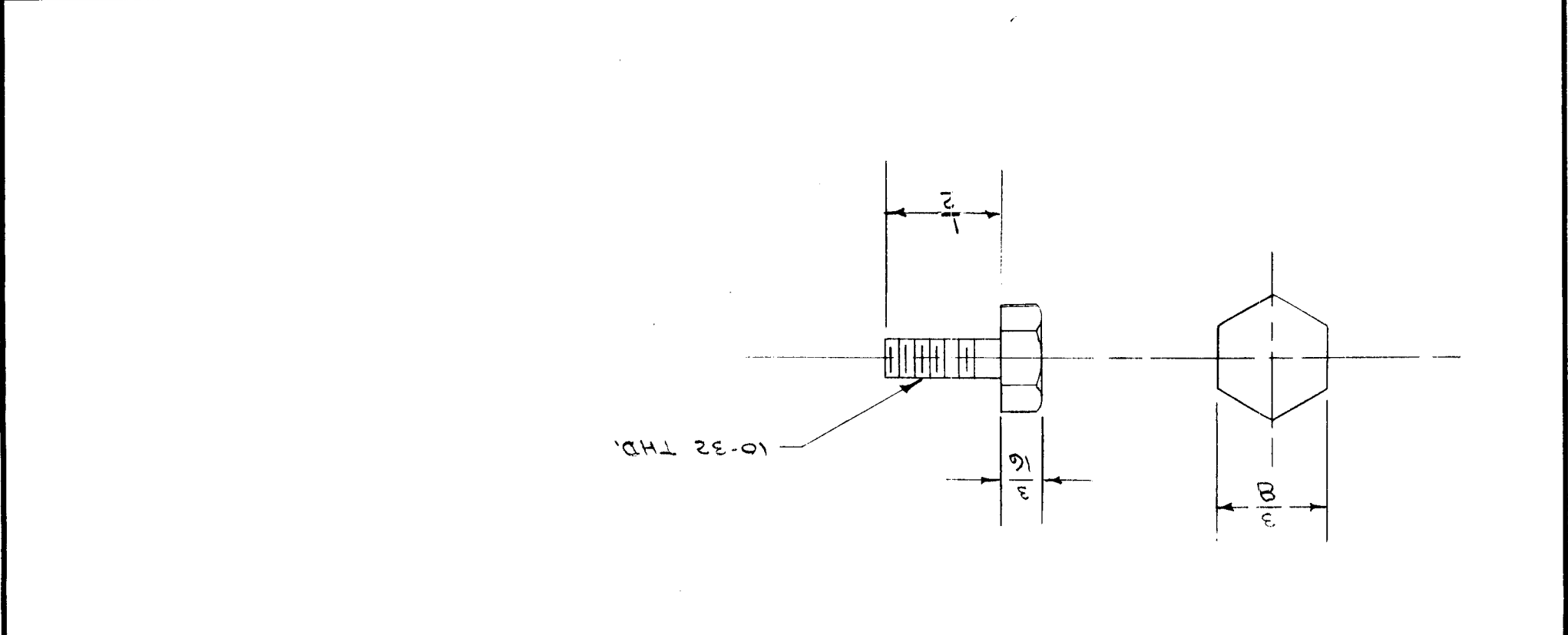
6-32 THREAD X 2 LONG



SFP-2	121	A-438	4-16-53
SFP-1	121	A-438	4-1-53
MODEL	PROJECT NO.	ASSY. NO.	DATE

IF IT IS FOUND DESIRABLE TO CHANGE ANY TOLERANCE OR OTHER DETAIL SPECIFIED ON THIS DRAWING NOTIFY THE PURCHASER PROMPTLY.		MAXIMUM ALLOWABLE TOLERANCES HAVE BEEN DETERMINED AND DEVIATIONS WILL BE CAUSE FOR REJECTION. REMOVE ALL BURRS AND SHARP EDGES	
USED ON		SC-114	

ALL OTHERS:		DEC. DIM. $\pm$		FRAC. DIM. $\pm$		ANGULAR DIM. $\pm$		TOLERANCES	
ISSUE ITEM		CHANGED FROM		DATE	CN. NO.	DRAFTS CHECKER	ENG. APP.	SCALE	
FINISH & SPEC. NO.		HEAT TREAT. SPEC.		TYPE & TEMPER.		MATERIAL		WEIGHT PER PC.	
PART NO.		REQ. ITEM		DESCRIPTION		SYMBOL		THE TECHNICAL MATERIEL CORP. MAMARONECK, NEW YORK	
DRAWN		ELEC. DES. APP.		MECH. DES. APP.		FINAL APPROVAL		SC-117	



IF IT IS FOUND DESIRABLE TO CHANGE ANY TOLERANCE OR OTHER DETAIL SPECIFIED ON THIS DRAWING NOTIFY THE PURCHASER PROMPTLY.		MAXIMUM ALLOWABLE TOLERANCES HAVE BEEN DETERMINED AND DEVIATIONS WILL BE CAUSE FOR REJECTION. REMOVE ALL BURRS AND SHARP EDGES	
USED ON		MODEL	PROJECT NO.
SC-117		ASSY. NO.	DATE

ALL OTHERS  
DEC. DIM. ±  
FRAC. DIM. ±  
ANGULAR DIM. ±

TOLERANCES

DRILL, PUNCH, COMMERCIAL STOCK  
SIZES AND MANUFACTURERS  
TOLERANCES ARE NOT INCLUDED.

CHANGED FROM

DATE CN. NO. DRAFTS CHECKER ENG. APP.

ISSUE ITEM

HOT DIP GALVANIZED  
FINISH & SPEC. NO.

HEAT TREAT. SPEC.

TYPE & TEMPER

MATERIAL

STOCK SIZE

REQ. ITEM PART NO.

SC-118

REF: GC-70178

FINAL APPROVAL

CHECKED

MECH. DES. APP. ELEC. DES. APP. DRAWN

6-2-26-54

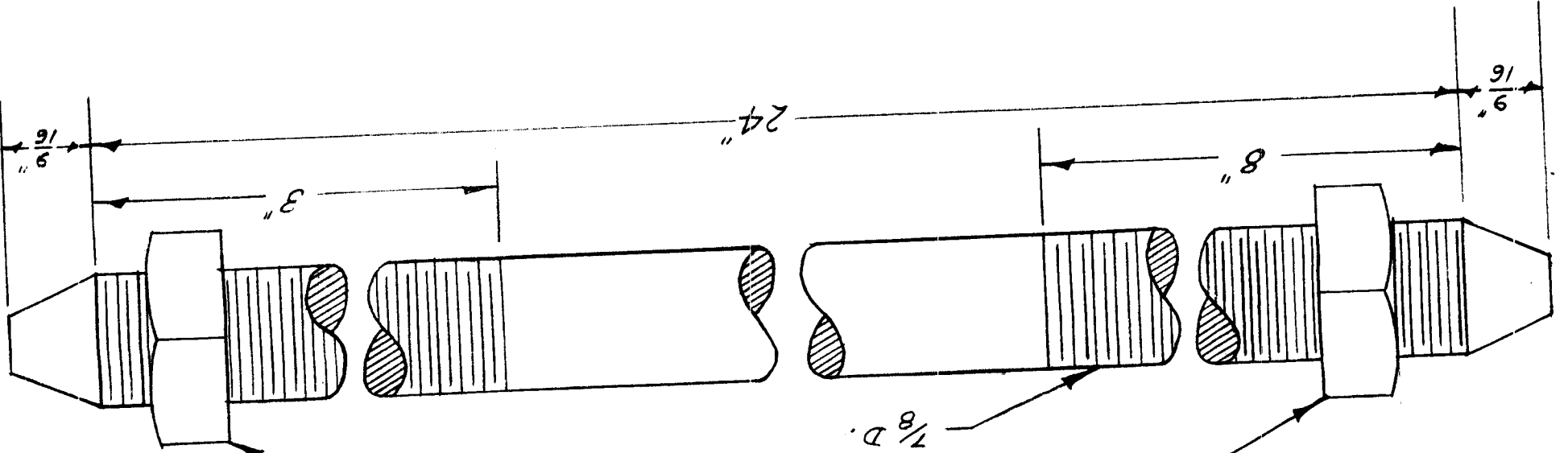
SPLICE ASS'Y.

STUD BOLT-24"

THE TECHNICAL MATERIEL CORP.  
MAMARONECK, NEW YORK

SYMBOL DESCRIPTION

REF: HURBARD # 29724



IF IT IS FOUND DESIRABLE TO CHANGE ANY TOLERANCE  
OR OTHER DETAIL SPECIFIED ON THIS DRAWING NOTIFY  
THE PURCHASER PROMPTLY.  
MAXIMUM ALLOWABLE TOLERANCES HAVE BEEN DETER-  
MINED AND DEVIATIONS WILL BE CAUSE FOR REJECTION.  
REMOVE ALL BURRS AND SHARP EDGES

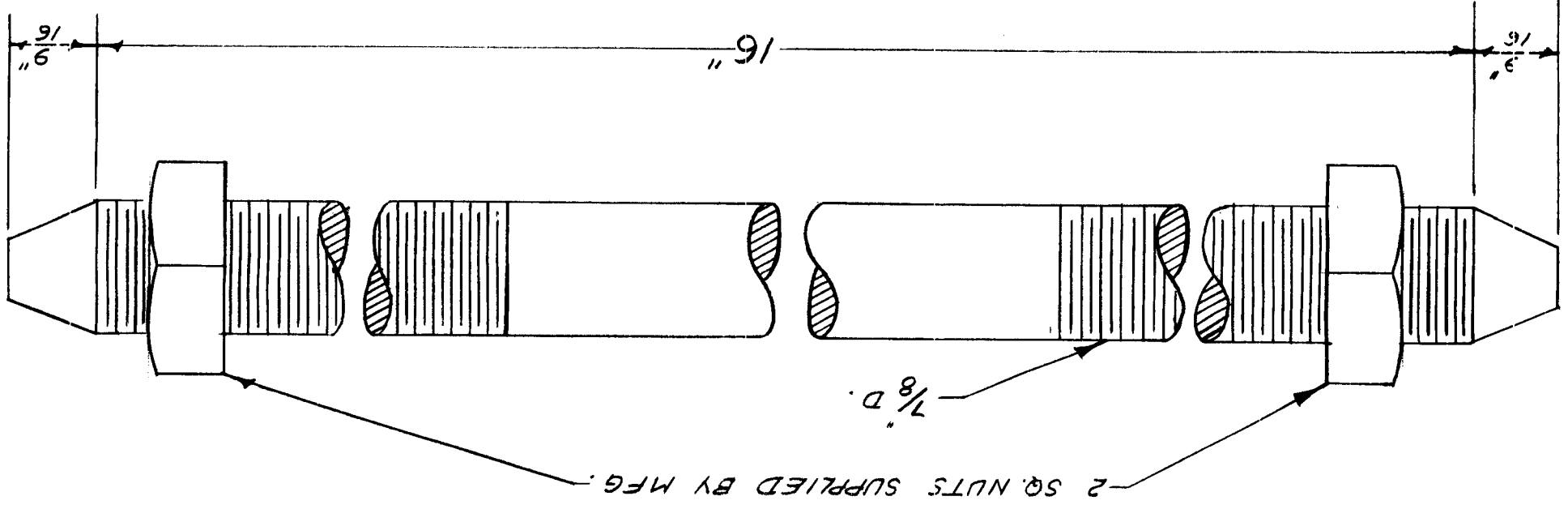
AMT. PER UNIT	6
MODEL	
PROJECT NO.	287
ASS'Y. NO.	A-694
DATE	2-26-54

SC-118

USED ON

ALL OTHERS		DEC. DIM. $\pm$		FRAC. DIM. $\pm$		ANGULAR DIM. $\pm$		TOLERANCES		SCALE <i>1/16"</i>		DRILL, PUNCH, COMMERCIAL STOCK SIZES AND MANUFACTURERS TOLERANCES ARE NOT INCLUDED.		FINISH & SPEC. NO.	
ISSUE ITEM		CHANGED FROM		DATE		CN. NO.		DRAFTS CHECKER		ENG. APP.		TYPE & TEMPER		HEAT TREAT. SPEC.	
MATERIAL		WEIGHT PER PC.		STOCK SIZE		MATERIAL		TYPE & TEMPER		HEAT TREAT. SPEC.		FINISH & SPEC. NO.		HOT DIP GALVANIZED	
REQ. ITEM		PART NO.		DESCRIPTION		SYMBOL		THE TECHNICAL MATERIEL CORP. MAMARONECK, NEW YORK		STUD BOLT - 16"		SPLICE ASS'Y.		DRAWN	
ELEC. DES. APP.		MECH. DES. APP.		FINAL APPROVAL		SC-119		GC-70178		REF: 62-26-54		SC-119		GC-70178	

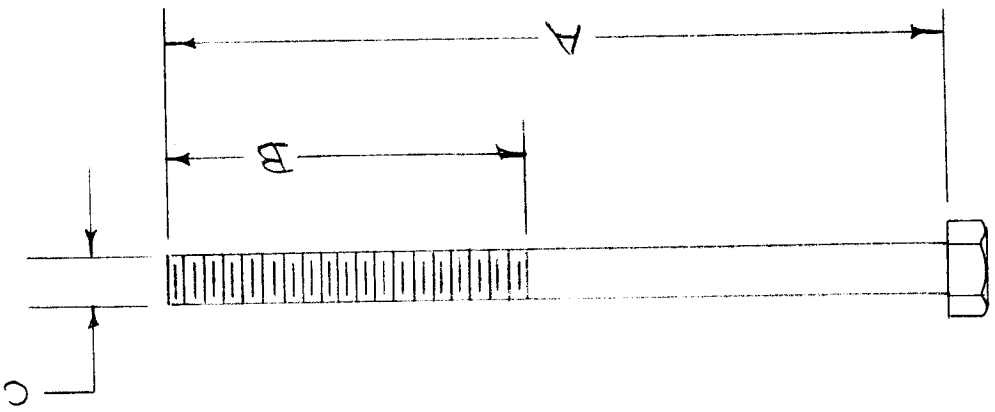
REF: HUBBARD # 29716



IF IT IS FOUND DESIRABLE TO CHANGE ANY TOLERANCE OR OTHER DETAIL SPECIFIED ON THIS DRAWING NOTIFY THE PURCHASER PROMPTLY.		MAXIMUM ALLOWABLE TOLERANCES HAVE BEEN DETERMINED AND DEVIATIONS WILL BE CAUSE FOR REJECTION.		REMOVE ALL BURRS AND SHARP EDGES	
USED ON		ANT PER UNIT		MODEL	
SC-119		4		287	
DATE		ASSY. NO.		PROJECT NO.	
2-26-54		A-694		287	



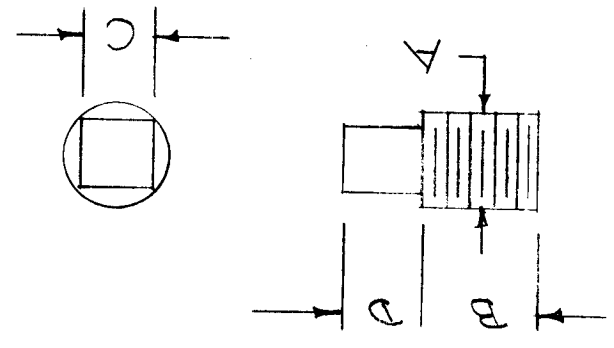
ALL OTHERS		DEC. DIM. $\pm$		FRAC. DIM. $\pm$		ANGULAR DIM. $\pm$		TOLERANCES ARE NOT INCLUDED.		DRILL, PUNCH, COMMERCIAL STOCK SIZES AND MANUFACTURERS	
TOLERANCES		SCALE		CHANGED FROM		DATE		CN. NO.		DRAFTS CHECKER	
ISSUE ITEM		1		MATERIAL & FINISH ADDED		2/20/56		1		R. M. S. - M. S.	
A		2		SC-120-3 ADDED							
REQ. ITEM		PART NO.		DESCRIPTION		SYMBOL		THE TECHNICAL MATERIEL CORP. MAMARONECK, NEW YORK		BOLT, HEX HEAD	
STOCK SIZE		WEIGHT PER PC.		MATERIAL		TYPE & TEMPER		DRAWN		ELEC. DES. APP.	
				SEE CHART		SEE CHART		COP. 4-27-54		MECH. DES. APP.	
FINISH & SPEC. NO.		HEAT TREAT. SPEC.		FINISH & SPEC. NO.		FINISH & SPEC. NO.		CHECKED		FINAL APPROVAL	
				SEE CHART		SEE CHART		H. M. S.		SC-120	
A										A	



IF IT IS FOUND DESIRABLE TO CHANGE ANY TOLERANCE OR OTHER DETAIL SPECIFIED ON THIS DRAWING NOTIFY THE PURCHASER PROMPTLY.		MAXIMUM ALLOWABLE TOLERANCES HAVE BEEN DETERMINED AND DEVIATIONS WILL BE CAUSE FOR REJECTION. REMOVE ALL BURRS AND SHARP EDGES	
TMC-NO	A	B	C
SC-120-1	A	1/8	1/4-20
SC-120-2	2/4	1/8	1/4-20
SC-120-3	2 1/2	2 1/2	1/4-20
			STAINLESS STEEL
			PASSIVATE
			CAD. PLATE 5-105-.002
			BRASS
			CAD. PLATE 5-105-.002
			BRASS
			CAD. PLATE 5-105-.002
			FINISH MATERIAL
NO.	QUAN.	MODEL	PROJECT NO.
SC-120-1	4	KS-85-X	J-227
SC-120-2			
SC-120-3	4	CTAC	A-799
			12-20-56
			A-499
			4-27-54
USED ON			
SC-120		A	

ALL OTHERS		DEC. DIM. $\pm$		FRAC. DIM. $\pm$		ANGULAR DIM. $\pm$		TOLERANCES ARE NOT INCLUDED.	
ISSUE ITEM		CHANGED FROM		DATE		CN. NO.		DRAFTS CHECKER ENG. APP.	
SCALE		TOLERANCES		DRILL, PUNCH, COMMERCIAL STOCK		SIZES AND MANUFACTURERS		TOLERANCES ARE NOT INCLUDED.	
HEAT TREAT. SPEC.		CHECKED		DRAWN		ELEC. DES. APP.		MECH. DES. APP.	
FINISH & SPEC. NO.		SC-121		SC-121		SC-121		SC-121	

REF: PIPE PLUGS ING., WELLINGTON OHIO

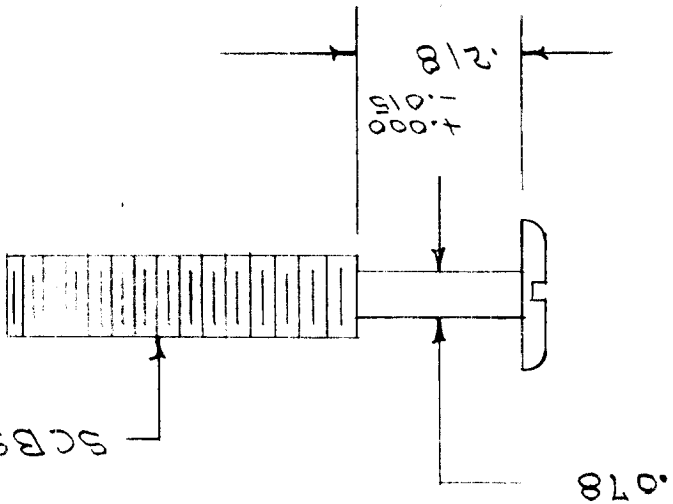


REQ. ITEM	PART NO.	DESCRIPTION	SYMBOL
		THE TECHNICAL MATERIEL CORP. MAMARONECK, NEW YORK	
		PIPE PLUG	
		SQUARE HEAD	
		TYPE & TEMPER	
		DRAWN	
		ELEC. DES. APP.	
		MECH. DES. APP.	
		CHECKED	
		FINAL APPROVAL	

CAT	NO.	MATERIAL	HEAD HEIGHT		HEAD WIDTH		BODY LENGTH		T M C NO.
			MIN.	MAX.	MIN.	MAX.	MIN.	MAX.	
A		DRY SEAL TAPER THREADS LONG	1/6-27	1/8-27	1/4 X 18	3/8-18	1/2-14	3/4-14	1-11-1/2
B		"	350	350	350	495	700	710	870
B		"	330	330	330	495	660	670	830
C		"	221	283	283	377	565	627	815
C		"	214	276	276	370	553	615	803
D		"	193	255	300	335	410	470	540
D		"	178	240	280	310	380	440	500
		BRASS - PLAIN	44566	44572	44578	44584	44590	44596	44602

IF IT IS FOUND DESIRABLE TO CHANGE ANY TOLERANCE OR OTHER DETAIL SPECIFIED ON THIS DRAWING NOTIFY THE PURCHASER PROMPTLY.		MAXIMUM ALLOWABLE TOLERANCES HAVE BEEN DETERMINED AND DEVIATIONS WILL BE CAUSE FOR REJECTION. REMOVE ALL BURRS AND SHARP EDGES	
USED ON		DATE	
SC-121		SC-121-1	

ALL OTHERS		DEC. DIM. ±		FRAC. DIM. ±		ANGULAR DIM. ±		TOLERANCES		SCALE		DRILL, PUNCH, COMMERCIAL STOCK SIZES AND MANUFACTURERS TOLERANCES ARE NOT INCLUDED.		FINISH & SPEC. NO.					
A		1		SCBS0440BC9		WAS SCRSOWD89		CHANGED FROM		DATE		CN. NO.		DRAFTS		CHECKER		ENG. APP.	
A		2		.218 WAS 7/32															
THE TECHNICAL MATERIEL CORP.		MAMARONECK, NEW YORK		SCREW, CAPTIVE															
REQ. ITEM		PART NO.		DESCRIPTION		SYMBOL		STOCK SIZE		MATERIAL		WEIGHT PER PC.		TYPE & TEMPER		DRAWN		ELEC. DES. APP.	



REQ. ITEM	MODEL	PROJECT NO.	ASSY. NO.	DATE
1	VOX	A-584	6/22/53	
1	PMO-1	285	A-584	8/16/54
1	PMO-2	285	A-584	8/16/54
1	VOX-2	291	A-584	8/16/54
1	RTF			1-24-55
1	RTF			2-2-56
1	RTF-2			11-10-58

IF IT IS FOUND DESIRABLE TO CHANGE ANY TOLERANCE OR OTHER DETAIL SPECIFIED ON THIS DRAWING NOTIFY THE PURCHASER PROMPTLY.

MAXIMUM ALLOWABLE TOLERANCES HAVE BEEN DETERMINED AND DEVIATIONS WILL BE CAUSE FOR REJECTION. REMOVE ALL BURRS AND SHARP EDGES.

USED ON

SC-122 A

IF IT IS FOUND DESIRABLE TO CHANGE ANY TOLERANCE OR OTHER DETAIL SPECIFIED ON THIS DRAWING NOTIFY THE PURCHASER PROMPTLY.

# STANDARD DRAWING

SC-123

A

MAXIMUM ALLOWABLE TOLERANCES HAVE BEEN DETERMINED AND DEVIATIONS WILL BE CAUSE FOR REJECTION.  
REMOVE ALL BURRS AND SHARP EDGES

USED ON

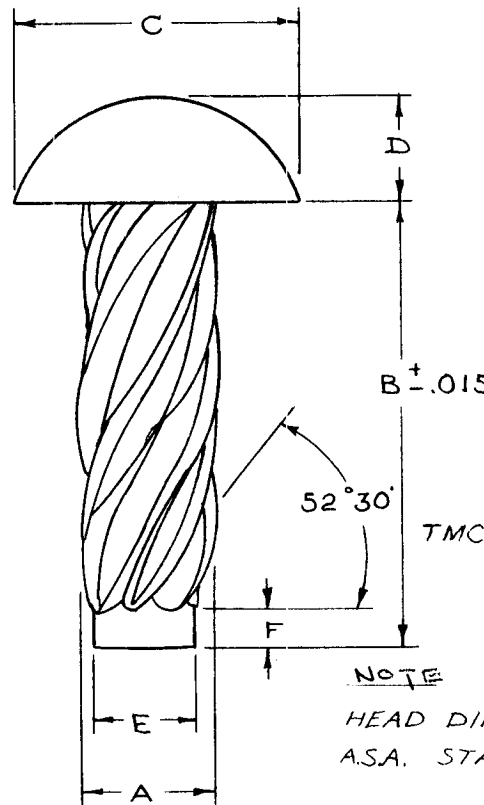
MODEL

PROJECT NO.

ASS'Y. NO.

DATE

SCREW SIZE	OUTSIDE DIA.	PILOT DIA.	HEAD DIMENSIONS		THD'S IN CIRC	USE DRILL SIZE
	A	E	C	D		
00	.060 .037	.049 .0465	.099 .090	.034 .026	6	55
0	.075 .072	.063 .060	.127 .118	.049 .041	6	51
2	.100 .097	.083 .080	.162 .146	.069 .059	8	44
4	.116 .112	.096 .092	.211 .193	.086 .075	7	37
6	.140 .136	.116 .112	.260 .240	.103 .091	7	31
7	.154 .150	.126 .122	.285 .264	.111 .099	8	29
8	.167 .162	.136 .132	.309 .287	.120 .107	8	27
10	.182 .177	.150 .146	.359 .334	.137 .123	8	20
12	.212 .206	.177 .173	.408 .382	.153 .139	8	11
14	.242 .236	.202 .198	.457 .429	.170 .155	9	2
5/16	.315 .309	.272 .267	.590 .557	.216 .198	11	M
3/8	.378 .371	.334 .329	.708 .670	.256 .237	12	T



CODE LENGTH "B" *	SCREW LENGTH "B" *	PILOT LENGTH "F"
2	1/8	3/64
3	3/16	3/64
4	1/4	3/64
5	5/16	3/64
6	3/8	1/6
8	1/2	1/6
10	5/8	5/64
12	3/4	5/64
16	1	1/8

TMC NO. SCREW SIZE SCREW LENGTH "B" LENGTH IN 16ths \*

SC-123-00-2

NOTE  
HEAD DIMENSIONS CONFORM TO  
ASA STANDARDS (B18-6-1947)

REQ.	ITEM	PART NO.	DESCRIPTION	SYMBOL
			THE TECHNICAL MATERIEL CORP. MAMARONECK, NEW YORK	
		STOCK SIZE	DRIVE SCREW	
		MATERIAL	WEIGHT PER PC.	
		TYPE & TEMPER		
		HEAT TREAT. SPEC.		
		FINISH & SPEC. NO.		

10.8.1954

TYPE & TEMPER

DRAWN

ELEC. DES. APP.

MECH. DES. APP.

CHECKED

FINAL APPROVAL

SC-123

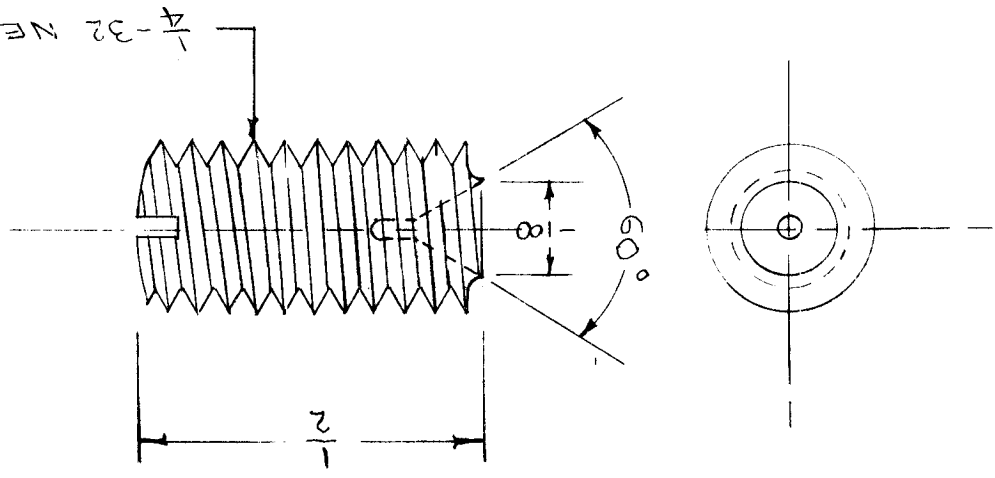
A

A	1	TYPE ADDED	8/26/54	1	C.D.D.	JAW	WDC
ISSUE	ITEM	CHANGED FROM	DATE	CN. NO.	DRAFTS	CHECKER	ENG. APP.
TOLERANCES			SCALE				
ALL OTHERS	DEC. DIM. ± FRAC. DIM. ± ANGULAR DIM. ±		DRILL, PUNCH, COMMERCIAL STOCK SIZES AND MANUFACTURERS TOLERANCES ARE NOT INCLUDED.				

ALL OTHERS		DEC. DIM. $\pm$		FRAC. DIM. $\pm$		AN ULAR DIM. $\pm$		TOLERANCES ARE NOT INCLUDED.		DRILL, PUNCH, COMMERCIAL STOCK SIZES AND MANUFACTURERS		FINISH & SPEC. NO.	
TOLERANCES		SCALE		CHANGED FROM		DATE		CN. NO.		DRAFTS CHECKER		ENG. APP.	
ISSUE ITEM		TYPE & TEMPER		DRAWN		ELEC. DES. APP.		MECH. DES. APP.		CHECKED		FINAL APPROVAL	

MATERIAL		WEIGHT PER PC.		STOCK SIZE		THE TECHNICAL MATERIEL CORP.		MAMARONECK, NEW YORK		SCREW, SET	
REQ. ITEM		PART NO.		DESCRIPTION		SYMBOL		DRAWN		O.D. 11/32	

REF: CARDWELL # 24.000



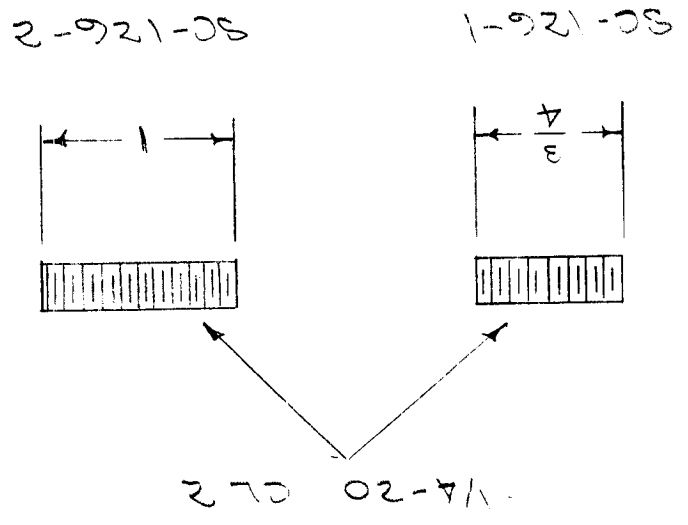
REQ. PER UNIT	1	MODEL	A-1000	PROJECT NO.		ASSY. NO.	A-422	DATE	11-23-54
---------------	---	-------	--------	-------------	--	-----------	-------	------	----------

USED ON

SC-124

IF IT IS FOUND DESIRABLE TO CHANGE ANY TOLERANCE OR OTHER DETAIL SPECIFIED ON THIS DRAWING NOTIFY THE PURCHASER PROMPTLY.  
 MAXIMUM ALLOWABLE TOLERANCES HAVE BEEN DETERMINED AND DEVIATIONS WILL BE CAUSE FOR REJECTION. REMOVE ALL BURRS AND SHARP EDGES

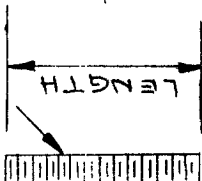
DEC. DIM. $\pm$		TOLERANCES		SCALE:		MAXIMUM ALLOWABLE TOLERANCES HAVE BEEN DETERMINED AND ANY DEVIATIONS WILL BE CAUSE FOR REJECTION.		REMOVE ALL BURRS AND SHARP EDGES	
FRAC. DIM. $\pm$		CHANGED FROM		DATE	CH. NO.	DRAFTS	CHECKER	ENG. APP.	
ANGULAR DIM. $\pm$		ISSUE	ITEM						
S-105 CAD. PLATE • 0003		DRAWN		TYPE & TEMPER		HEAT TREAT. SPEC.		FINISH & SPEC. NO.	
ELEC. DES. APP.		CHECKED		MATERIAL		STOCK SIZE		ELEC. DES. APP.	
MECH. DES. APP.		POWDER AMPL.		BRASS		STUD		MECH. DES. APP.	
SC-126		H. J. J.		THE TECHNICAL MATERIEL CORP. MAMARONECK, NEW YORK		PART NO.		REQ. ITEM	
FINAL APPROVAL		DESCRIPTION		SYMBOL		PART NO.		REQ. ITEM	



REQ. PER UNIT	1EA	RTF	A-1162	11-30-55	SC-126
MODEL	RTF	P/A	11-19-58		
ASS'Y. NO.	RTF-2				
DATE					
USED ON					

DEC. DIM. ±		TOLERANCES		SCALE:		MAXIMUM ALLOWABLE TOLERANCES HAVE BEEN DETERMINED AND ANY DEVIATIONS WILL BE CAUSE FOR REJECTION.		REMOVE ALL BURRS AND SHARP EDGES	
FRAC. DIM. ±		CHANGED FROM		DATE		TYPE & TEMPER		FINISH & SPEC. NO.	
ANGULAR DIM. ±		ISSUE ITEM		CH. NO.		HEAT TREAT. SPEC.		ELEC. DES. APP.	
		A 1		10/15/57				MECH. DES. APP.	
		B 1		2/2/58		BRASS		SEE NOTE	
		C 1		5/26/58		STOCK SIZE		DRAWN	
		D SC-127-4 & 5 ADDED		1-3-59				CHECKED	
								MATERIAL	
								POWER AMPL.	
								GPT-750	
								STUD	
								MAMARONECK, NEW YORK	
								THE TECHNICAL MATERIEL CORP.	
SYMBOL		DESCRIPTION		PART NO.		REQ. ITEM		J.C.B.	

10-32 CL-2



MC No.	LENGTH	FINISH
SC-127-1	7/8	5-105 CADMIUM PLATED
SC-127-2	3/4	W/OUT PLATING
SC-127-3	11/16	5105 Cadmium Plated (.0003)
SC-127-4	13/4	5105 CADMIUM PLATE (.0003)
SC-127-5	3/4	5105 CADMIUM PLATE (.0003)

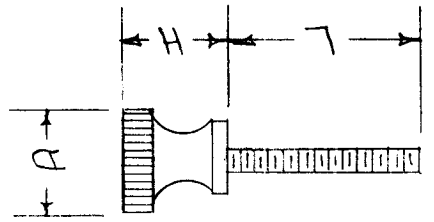
USED ON		MODEL		ASSY. NO.		DATE	
SC-127		D					

DEC. DIM. $\pm$		TOLERANCES		SCALE:		MAXIMUM ALLOWABLE TOLERANCES HAVE BEEN DETERMINED AND ANY DEVIATIONS WILL BE CAUSE FOR REJECTION.		FINISH & SPEC. NO.		ELEC. DES. APP.		MECH. DES. APP.		SC-128		B
FRAG. DIM. $\pm$		CHANGED FROM		DATE		REMOVE ALL BURRS AND SHARP EDGES		TYPE & TEMPER		DRAWN		CHECKED		FINAL APPROVAL		
ANGULAR DIM. $\pm$		ISSUE ITEM		CH. NO.		DRAFTS		HEAT TREAT. SPEC.		CD 1/2/R		ADP		ADP		
		A						MATERIAL								
		B 1		7.20.67		18582		BRASS								
		B 1		7.20.67		18582		STOCK SIZE								
		A						THE TECHNICAL MATERIEL CORP.								
		B 1						MAMARONECK, NEW YORK								
		A						DESCRIPTION								
		B 1						PART NO.								
		A						REQ. ITEM								
		B 1						SYMBOL								

REF: UNITED SCREW & BOLT CORP.

SPECIAL SIZES MADE TO ORDER IN QUANTITIES.  
 LENGTHS AVAILABLE 1/2" 3/4" 1"

THREAD SIZE	DIAMETER OF HEAD	HEIGHT OF HEAD	SIZE CODE
10-32	7/16	19/64	1032
1/4-20	3/8	2520	
12-24	1/2	19/64	1224
10-24	7/16	19/64	1024
8-32	13/32	9/32	0832
6-32	3/8	17/64	0632
4-36	5/16	17/64	0436



TYPE DESIGNATION TO BE IN FOLLOWING FORM  
 SC - 128 - 1032 - 12  
 TYPE NUMBER THREAD LENGTH IN 16ths

**STANDARD DRAWING**

USED ON	MODEL	ASSY. NO.	DATE	SC-128	B
REQ. PER UNIT					



DEC. DIM.  $\pm$   
 FRAC. DIM.  $\pm$   
 ANGULAR DIM.  $\pm$

REMOVE ALL BURRS AND SHARP EDGES  
 WILL BE CAUSE FOR REJECTION.  
 BEEN DETERMINED AND ANY DEVIATIONS  
 MAXIMUM ALLOWABLE TOLERANCES HAVE

TOLERANCES

ISSUE ITEM	CHANGED FROM	DATE	CH. NO.	DRAFTS	CHECKER	ENG. APP.
A 1	1/4 was 5/16	10/5/57	1	16	[Signature]	[Signature]

SCALE:

TYPE & TEMPER | HEAT TREAT. SPEC.

MATERIAL

BRASS

STOCK SIZE

PART NO.

REQ. ITEM

DESCRIPTION

THE TECHNICAL MATERIEL CORP.  
 MAMARONECK, NEW YORK

STUD, CONTACT

POWER AMPL. GPT-750

DRAWN [Signature]

CHECKED

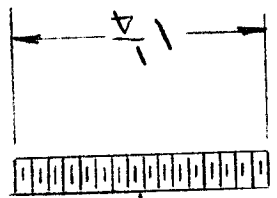
FINAL APPROVAL [Signature]

ELEC. DES. APP. | MECH. DES. APP.

FINISH & SPEC. NO.

SC-130

A



10-32 THREAD CL 2

REQ. PER UNIT	MODEL	ASSY. NO.	DATE
1	KTF	1/6/55	11/20/58
1	RTF-2	P/A	

USED ON

SC-130

A

DEC. DIM. ±		FRAC. DIM. ±		ANGULAR DIM. ±	
MAXIMUM ALLOWABLE TOLERANCES HAVE BEEN DETERMINED AND ANY DEVIATIONS WILL BE CAUSE FOR REJECTION. REMOVE ALL BURRS AND SHARP EDGES					
SCALE:		TOLERANCES			
ISSUE	ITEM	CHANGED FROM		DATE	
A	1	SCREW WAS SLOTTED		1-4-63	1937
CHECKER		DRAFTS		CH. NO.	
[Signature]		[Signature]		[Signature]	
ENG. APP.		MATERIAL			
REQ. ITEM		PART NO.		STOCK SIZE	
DESCRIPTION		THE TECHNICAL MATERIEL CORP. MAMARONECK, NEW YORK			
SYMBOL		SCREW, UNDERCUT FLAT HEAD			
FINISH & SPEC. NO.		TYPE & TEMPER		HEAT TREAT. SPEC.	
ELEC. DES. APP.		DRAWN		CHECKED	
MECH. DES. APP.		[Signature]		[Signature]	
SC-131		FINAL APPROVAL			
A		[Signature]			

CLASS	SA	SIZE	THD. SYMBOL	CODE	MAX	MIN
0	30	NF-A	0080	0080	.119	.105
1	64	NC-A	0164	0172	.146	.130
1	72	NF-A	0172	0172	.130	.032
2	56	NC-A	0256	0256	.172	.156
2	64	NF-A	0264	0264	.156	.037
3	48	NC-A	0348	0348	.199	.181
3	56	NF-A	0356	0356	.181	.043
4	40	NC-A	0440	0440	.225	.207
4	48	NF-A	0448	0448	.207	.048
5	40	NC-A	0540	0540	.252	.232
5	48	NF-A	0544	0544	.232	.054
6	40	NF-A	0640	0640	.279	.257
6	32	NC-A	0632	0632	.257	.060
8	32	NC-A	0832	0832	.332	.308
8	36	NF-A	0836	0836	.308	.071
10	24	NC-A	1024	1024	.385	.359
10	24	NF-A	1024	1024	.359	.083
10	32	NF-A	1032	1032	.359	.068
12	24	NC-A	1224	1224	.438	.410
12	28	NF-A	1228	1228	.410	.094
1/4	20	UNC-A	2520	2520	.477	.108
1/4	28	UNC-A	2528	2528	.477	.086
5/16	18	UNC-A	3118	3118	.600	.135
5/16	24	UNC-A	3124	3124	.600	.109
3/8	16	UNC-A	3716	3716	.722	.162
3/8	24	UNC-A	3724	3724	.722	.132
7/16	14	UNC-A	4314	4314	.771	.156
7/16	20	UNC-A	4320	4320	.771	.126
1/2	13	NC-A	5013	5013	.831	.160
1/2	20	UNC-A	5020	5020	.831	.123

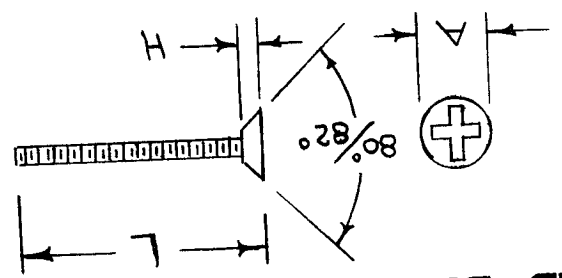
MATERIAL	
A	ALUMINUM
B	BRASS
S	STEEL
S	STAINLESS

FINISH	
B	BLACK NICKEL
C	CADMIUM
N	BRIGHT NICKEL
R	NO FINISH
S	PASSIVATE (STAINLESS ONLY)

TYPE DESIGNATION TO BE IN FOLLOWING FORM.

SC-131-0832-B C-40

TYPE NUMBER SIZE MAT. FIN. LENGTH IN 1/16 THS.



STANDARD DRAWING

USED ON

REG. NO.

DATE

SC-131

A

DEC. DIM.  $\pm$   
 FRAC. DIM.  $\pm$   
 ANGULAR DIM.  $\pm$

MAXIMUM ALLOWABLE TOLERANCES HAVE BEEN DETERMINED AND ANY DEVIATION WILL BE CAUSE FOR REJECTION.  
 REMOVE ALL BURRS AND SHARP EDGES

FINISH & SPEC. NO. 5-105 CADMIUM PLATE  
 '0002

ELEC. DES. APP. MECH. DES. APP. *W*

SC-132

TOLERANCES

ISSUE ITEM	CHANGED FROM	DATE	CH. NO.	DRAFTS	CHECKER	ENG. APP.

SCALE:

TYPE & TEMPER HEAT TREAT. SPEC. #

MATERIAL BRASS

STOCK SIZE 10-32 x 2 1/4 ROD

PART NO. REQ. ITEM

DESCRIPTION THE TECHNICAL MATERIEL CORP.  
 MAMARONECK, NEW YORK  
 STUD, FEED THRU

SYMBOL

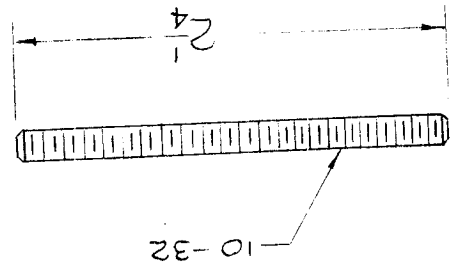
GP-750

FINAL APPROVAL *W*

CHECKED *W*

DRAWN *W*

DATE 3-29-56



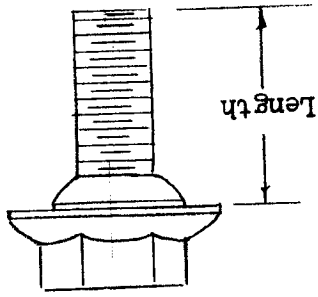
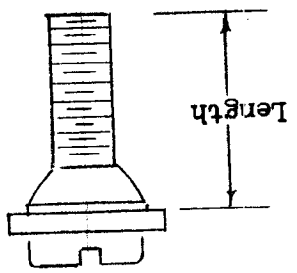
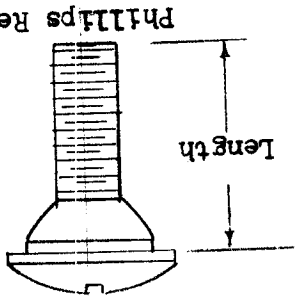
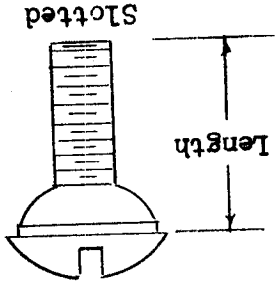
REQ. PER UNIT	MODEL	ASS'Y. N.	DATE
2	RTF		3-29-56
2	RTF-2	P/A	11-19-58

SC-132

USED ON

# STANDARD DRAWING

NOTE: Neoprene Washers supplied w/all Styles.



Mat. 1st	A	Aluminum
	B	Brass
	S	Steel
	S	Stainless Steel

Thr ad Size	Size Cod
3/8-16	3716
5/16-18	3118
1/4-20	2520
1/4-20	1420
12-24	1224
1032	1032
832	0832
632	0632

Length	Cod
1/4	4
5/16	5
3/8	6
7/16	7
1/2	8
5/8	10
3/4	12
1	16
1 1/4	20
1 1/2	24

Style	Head
T	Truss Head
P	Pan Washer Head
H	Hex, Washer Head

Head	Finish
S	Slotted
P	Phillips
H	Hex Head

Finish	Material
B	Black Nick 1
C	Cadmium
N	Bright Nickel
R	No Finish
S	Passivate Stainless, Only

USED ON

REQ. PER UNIT	MODEL	ASSY. NO.	DATE

SC-133

SC-133  
 H  
 S  
 0832  
 B  
 C  
 8  
 Length  
 Material  
 Finish  
 Thread Size  
 Head  
 Style  
 Screw, Machine

REF: Nat'l Screw & Mfg. Co.

THE TECHNICAL MATERIEL CORP.  
 MAMARONECK, NEW YORK

FASTENERS, TURN-TITE  
 (SCREW, MACHINE TYPE)

DESCRIPTION

SYMBOL

REQ. ITEM PART NO.

STOCK SIZE

MATERIAL

DATE CH. NO. DRAFTS CHECKER ENG. APP.

SCALE:

TOLERANCES

DEC. DIM. ±  
 FRAC. DIM. ±  
 ANGULAR DIM. ±

MAXIMUM ALLOWABLE TOLERANCES HAVE BEEN DETERMINED AND ANY DEVIATIONS WILL BE CAUSE FOR REJECTION.  
 REMOVE ALL BURRS AND SHARP EDGES

FINISH & SPEC. NO.

ELEC. DES. APP. MECH. DES. APP.

TYPE & TEMPER HEAT TREAT. SPEC.

DRAWN CHECKED

FINAL APPROVAL

SC-133

DEC. DIM.  $\pm$   
 FRAC. DIM.  $\pm$   
 ANGULAR DIM.  $\pm$

MAXIMUM ALLOWABLE TOLERANCES HAVE BEEN DETERMINED AND ANY DEVIATIONS WILL BE CAUSE FOR REJECTION.  
 REMOVE ALL BURRS AND SHARP EDGES

TOLERANCES

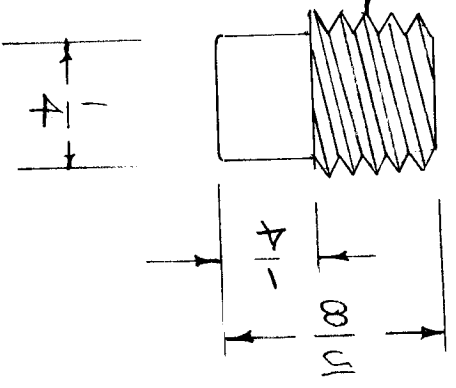
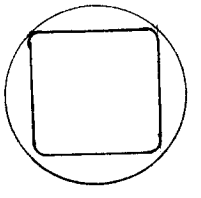
SCALE: 5-401-89

ISSUE	ITEM	CHANGED FROM
A	1	5-401-89 ADDED
B	1	DELETED MFR REF NOTE

DATE	CH. NO.	DRAFTS	CHECKER	ENG. APP.
9-23-63	10,003	G.D.L.	[Signature]	[Signature]
11/8/63	10323	[Signature]	[Signature]	[Signature]

FINISH & SPEC. NO.		ELEC. DES. APP. [Signature]	MECH. DES. APP. [Signature]
TYPE & TEMPER		DRAWN	CHECKED [Signature]
HEAT TREAT. SPEC.		9/21/62	[Signature]
MATERIAL		ALUMINUM	
STOCK SIZE		PLUG, PIPE	
PART NO.		THE TECHNICAL MATERIEL CORP. MAMARONECK, NEW YORK	
REQ. ITEM	DESCRIPTION	SYMBOL	

1/8 - 27 PIPE THREADS

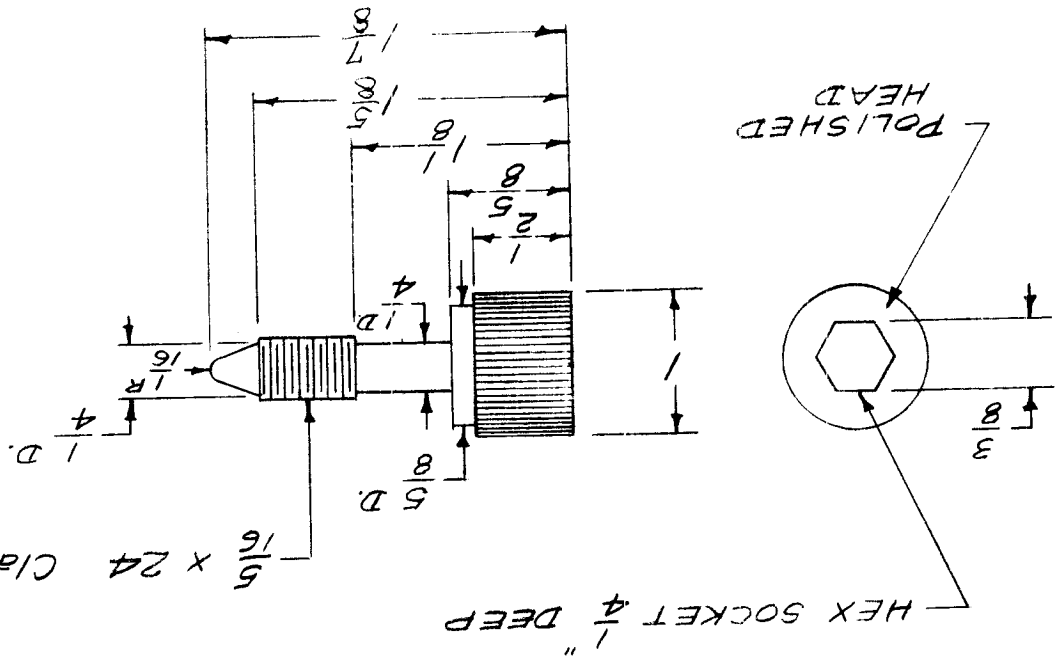


DIMENSIONS ARE APPROX. AND FOR REFERENCE ONLY.

REQ. PER UNIT	MODEL	ASSY. NO.	DATE
	USED ON		
	SC-134		B

DEC. DIM. $\pm$		TOLERANCES		SCALE: FULL		REMOVE ALL BURRS AND SHARP EDGES	
FRAC. DIM. $\pm$ 1/64		CHANGED FROM		DATE		WILL BE CAUSE FOR REJECTION.	
ANGULAR DIM. $\pm$		ISSUE ITEM		CH. NO. DRAFTS		MAXIMUM ALLOWABLE TOLERANCES HAVE	
				CHECKER		BEEN DETERMINED AND ANY DEVIATIONS	
				ENG. APP.		TYPE & TEMPER	
				1-1178		HEAT TREAT. SPEC	
						COLD ROLLED	
						MATERIAL	
						STEEL	
						STOCK SIZE	
						PART NO.	
						REQ. ITEM	
						DESCRIPTION	
SYMBOL						THE TECHNICAL MATERIEL CORP.	
						MAMARONECK, NEW YORK	
						THUMBSCREW	
						DRAWN	
						CHECKED	
						FINAL APPROVAL	
						SC-137	

Ref - Mats with NT-124



5/16 x 24 Class 2 Threads. (After Plating)

REQ. PER UNIT	6
MODEL	GPT-750
ASSY. NO.	10-10-57
DATE	10-10-57
USED ON	SC-137

DEC. DIM.  $\pm$   
 FRACTIONAL DIM.  $\pm \frac{1}{64}$   
 ANGULAR DIM.  $\pm$

MAXIMUM ALLOWABLE TOLERANCES HAVE BEEN DETERMINED AND ANY DEVIATIONS WILL BE CAUSE FOR REJECTION. REMOVE ALL BURRS AND SHARP EDGES

ISSUE ITEM	CHANGED FROM	DATE	CH. NO.	DRAFTS	CHECKER	ENG. APP.

TOLERANCES

SCALE: *etc*

TYPE & TEMPER

HEAT TREAT. SPEC. *etc*

DRAWN *etc*

CHECKED *etc*

FINAL APPROVAL *etc*

MATERIAL

STEEL

STOCK SIZE *etc*

THE TECHNICAL MATERIEL CORP.  
 MAMARONECK, NEW YORK  
 SCREW, HEX HEAD SPEC.

REQ. ITEM

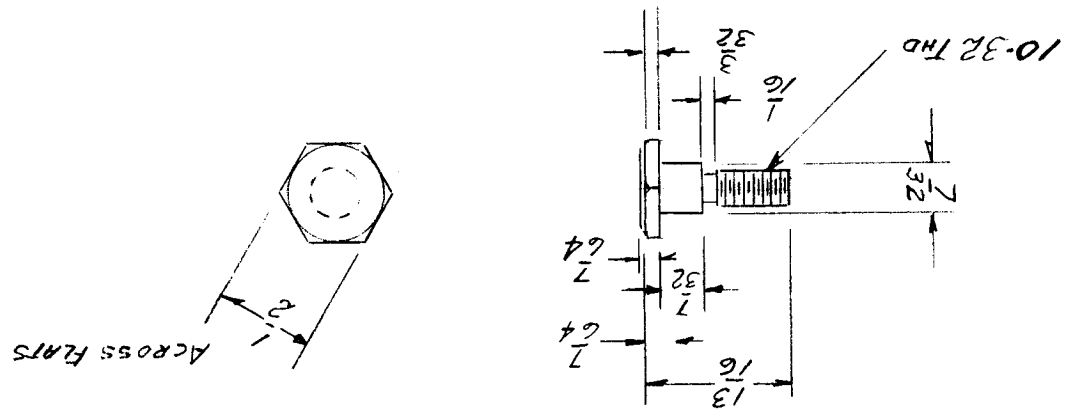
PART NO.

DESCRIPTION

SYMBOL

REF TO FORSHAY SALES

NOTE:  
 TO BE SUPPLIED WITH HA-110



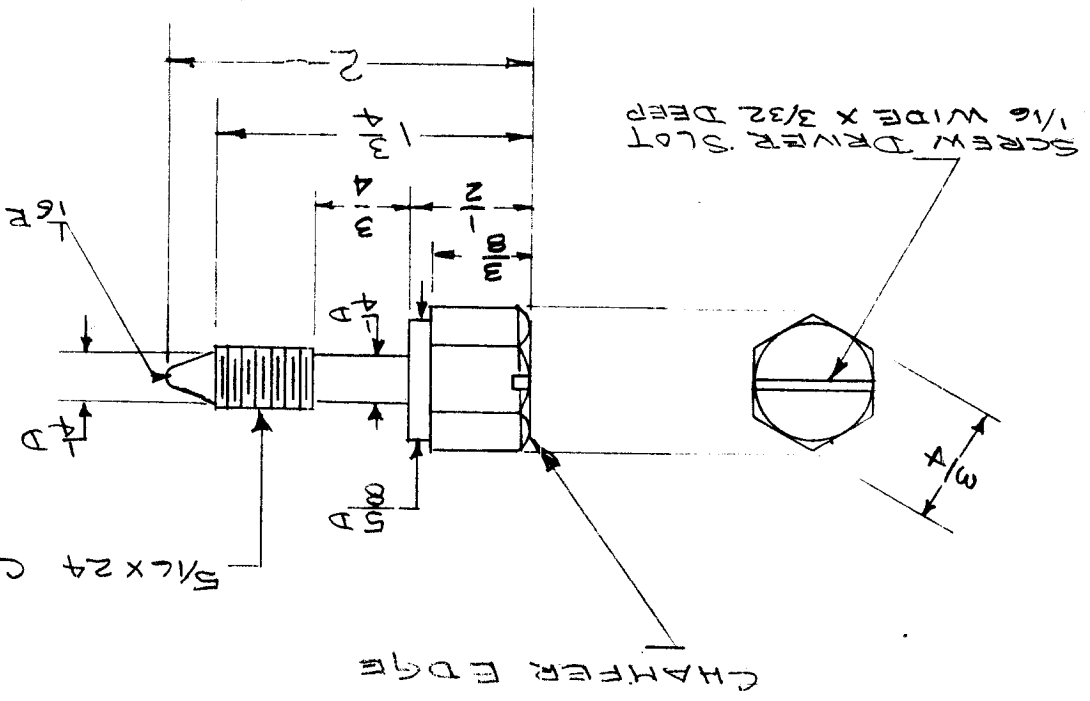
REQ. PER UNIT	MODEL	ASSY. NO.	DATE
1	5WR-3000 P4	A-1553	6/5/58

USED ON SC-138

DEC. DIM. ±		SCALE: $\frac{1}{2}$		MAXIMUM ALLOWABLE TOLERANCES HAVE BEEN DETERMINED AND ANY DEVIATIONS WILL BE CAUSE FOR REJECTION.		REMOVE ALL BURRS AND SHARP EDGES	
ANGULAR DIM. ±	FRAC. DIM. ±	TOLERANCES					
		ISSUE ITEM	CHANGED FROM	DATE	CH. NO.	DRAFTS	CHECKER
A	1	8/4 FLATS WAS 1/2 1/8 HD. THR. WAS 5/8	7/5/58	1	16	16	16
B	1	3/4 OM WAS 5/8	6/4/59	1105	JCB	JCB	JCB
C	1	Notes Added	7/24/61	5336	JCB	JCB	JCB
FINISH & SPEC. NO.		TYPE & TEMPER		MATERIAL		STOCK SIZE	
11		303		STEEL		STAINLESS	
ELEC. DES. APP. / MECH. DES. APP.		DRAWN		CHECKED		FINAL APPROVAL	
RTS		16		16		1/10	
5C-139		HEXAGON THUMB SCREW		THE TECHNICAL MATERIAL CORP. MAMARONECK, NEW YORK			
REQ. PER UNIT	MODEL	ASSY. NO.	DATE	SYMBOL			
7	RTX-2		9-17/58	C			
2	GPT-10K	AX-103	1-24-59				

HATES WITH NT-124

NOTE -  
HEXHEAD AND SHAFT  
MUST BE SMOOTH AND  
FREE OF ALL MACHINING  
BLEMISH MARKS BEFORE  
PASSIVATING.  
FINISH -  
S104-PASSIVATE.



REQ. PER UNIT	MODEL	ASSY. NO.	DATE	USED ON	
7	RTX-2		9-17/58	5C-139	C
2	GPT-10K	AX-103	1-24-59		



DEC. DIM. $\pm$		TOLERANCES		SCALE:		REMOVE ALL BURRS AND SHARP EDGES	
FRAC. DIM. $\pm$		CHANGED FROM		DATE		MAXIMUM ALLOWABLE TOLERANCES HAVE BEEN DETERMINED AND ANY DEVIATIONS WILL BE CAUSE FOR REJECTION.	
ANGULAR DIM. $\pm$		ISSUE ITEM		CH. NO.		TYPE & TEMPER	
				DRAFTS		HEAT TREAT. SPEC.	
				ENG. APP.		FINISH & SPEC. NO.	
						ELEC. DES. APP.	
						MECH. DES. APP.	
						DRAWN	
						CHECKED	
						FINAL APPROVAL	

SC-140

THE TECHNICAL MATERIEL CORP.  
MAMARONECK, NEW YORK

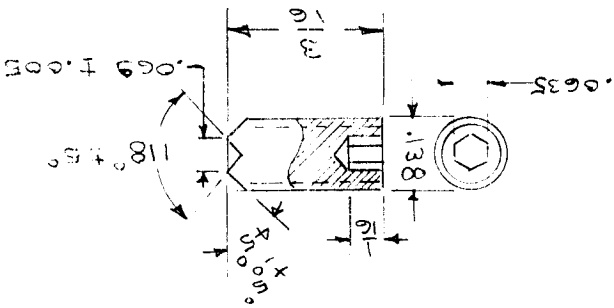
STAINLESS STEEL  
MATERIAL

SCREW, HEADLESS SET  
HEX SOCKET HEAD

REQ. ITEM PART NO.

DESCRIPTION SYMBOL

G-32 THREADS NC2



REQ. PER UNIT	3	MODEL	ATS-70	USED ON	
		ASSY. NO.		DATE	
					SC-140



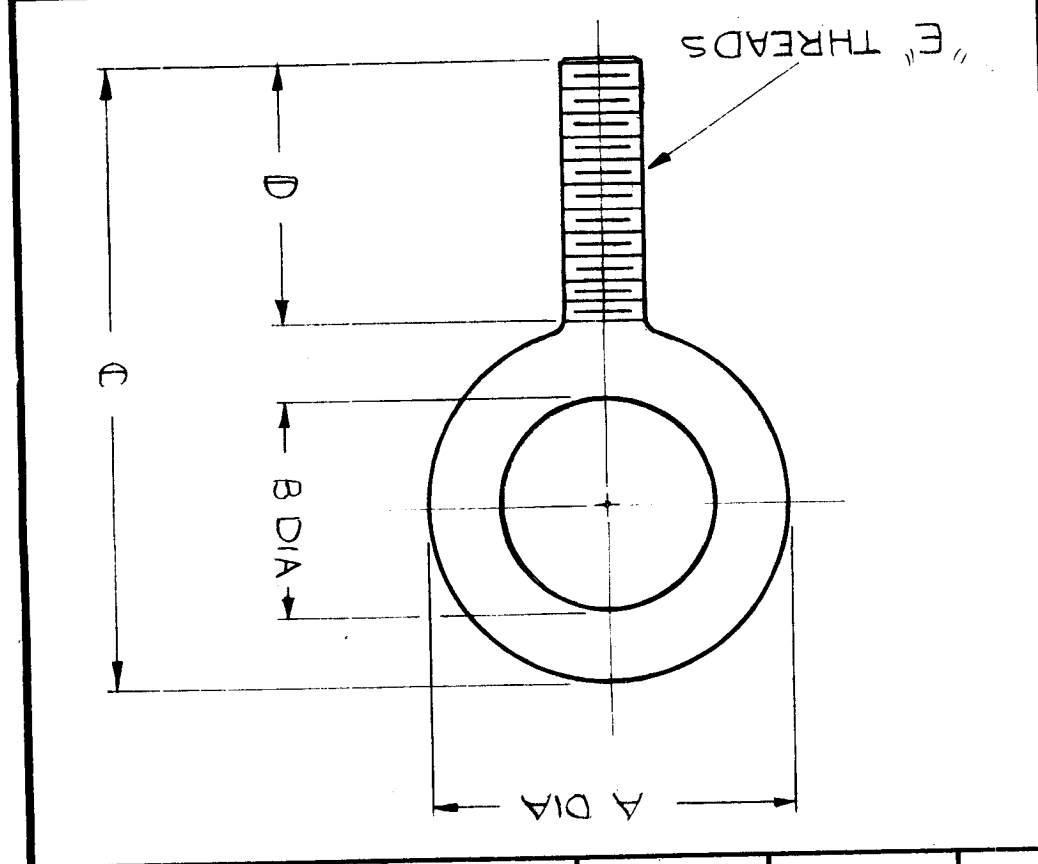
DEC. DIM. ±		FRAG. DIM. ±		ANGULAR DIM. ±	
MAXIMUM ALLOWABLE TOLERANCES HAVE BEEN DETERMINED AND ANY DEVIATIONS WILL BE CAUSE FOR REJECT! N. REMOVE ALL BURRS AND SHARP EDGES					
ISSUE ITEM		CHANGED FROM		SCALE: S-401-73	
A 1	7/16-14 THD WAS 7/16-20	DATE	CH. NO.	DRAFTS	CHECKER
B 1	DRWS TABULATED	12.6.66	1786	WLD	WLD
TOLERANCES		TYPE & TEMPER		HEAT TREAT. SPEC.	
FINISH & SPEC. NO.		FINISH & SPEC. NO.		ELEC. DES. APP. MECH. DES. APP.	
SEE CHART		DRAWN		CHECKED	
J.C. Biele		J.C. Biele		O.M.D.	
MATERIAL		STOCK SIZE		DESCRIPTION	
FORGED STEEL		SEE TABLE		THE TECHNICAL MATERIEL CORP.	
EYEBOLT, THREADED		MAMARONECK, NEW YORK		SYMBOL	
REG. ITEM		PART NO.		SYMBOL	

NOMENCLATURE TO BE AS SHOWN  
 SC-142-C  
 TMC DWG. NO. FINISH (CADMIUM PLATE)

TMC PT/NO	A	B	C	D	E	FIN
SC142	1-27/32	3-1/4	1-3/8	7/16-14	C	C
SC142-2	2	1-1/4	3-1/8	1-1/8	3/8-16	C

NOTES  
 HEAT TREATED & SAFE W/L: 1 TON  
 "VULCAN" WELDLESS #4 PATTERN.

SYMBOL	FINISH
N	NO FINISH
C	S105 CADMIUM PLATE
G	S115 TMC SMOOTH GRAY ENAMEL

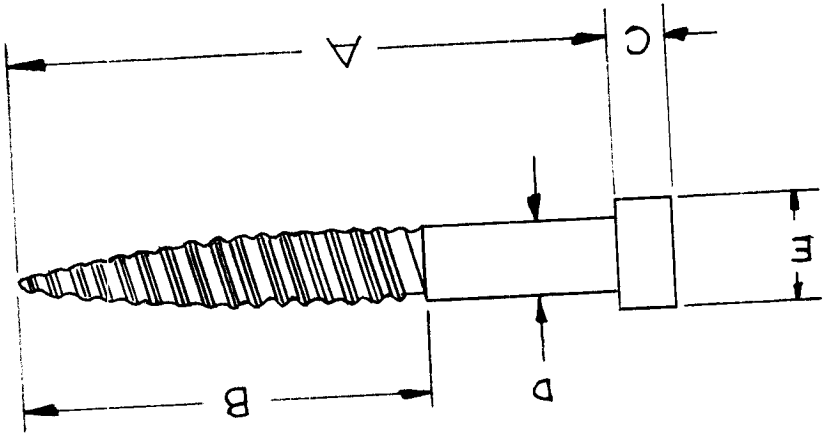


REG. UNIT	MODEL	USED ON
DATE	ASSY. NO.	DATE
B-26-59		
SC-142		
B		

UNLESS OTHERWISE SPECIFIED:  
DIMENSIONS ARE IN INCHES  
TOLERANCES ON  
FRAC.  $\pm 1/64$  DEC.  $\pm .005$  ANGLES  $\pm 1/20$

MAXIMUM ALLOWABLE TOLERANCES HAVE  
BEEN DETERMINED AND ANY DEVIATIONS  
WILL BE CAUSE FOR REJECTION.  
REMOVE ALL BURRS AND SHARP EDGES

SYM	DESCRIPTION	SCALE:				DATE	CH. NO.	DRAFTS	CHECKER	ENG. APP.	MATERIAL	STOCK SIZE	PART NO.	REQ. ITEM	FINISH & SPEC. NO.	ELEC. DES. APP.	MECH. DES. APP.	TYPE & TEMPER	HEAT TREAT. SPEC.	DRAWN	CHECKED	FINAL APPROVAL	SC-145
		304	304	CS	CS									CS		CS	CS						
											STAINLESS STEEL												
											STAINLESS STEEL												
											BOLT, LAG												
											THE TECHNICAL MATERIEL CORP.												
											MAMARONECK, NEW YORK												
											DESCRIPTION												
											SYMBOL												



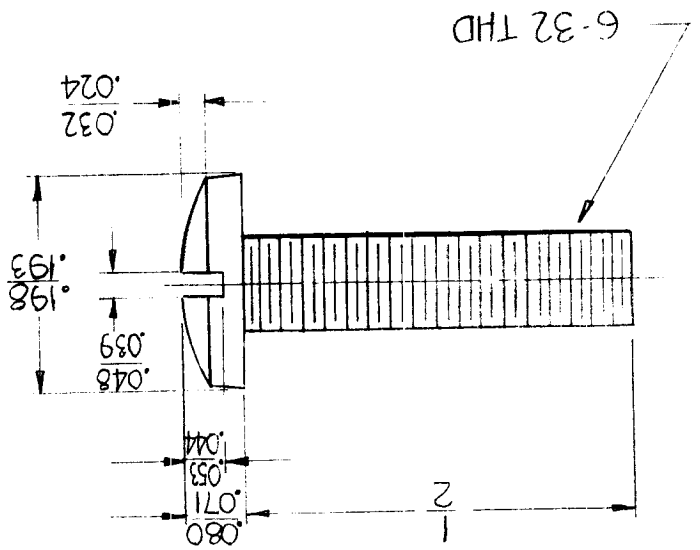
TMC NO.	A	B	C	D	E
SC-145-1	3	2	.268	3/8	.562
SC-145-2	3	2	.188	1/4	.375
SC-145-3	4	2 1/2	.188	1/4	.375
SC-145-4	5	3	.268	3/8	.562
SC-145-5	3	2	.348	1/2	.750
SC-145-6	5	3	.348	1/2	.750
SC-145-7	2	1 1/2	.203	5/16	.500

THE CONTENTS OF THIS DRAWING ARE THE EXCLUSIVE PROPERTY  
OF THE TECHNICAL MATERIEL CORP. ITS UNAUTHORIZED USE OR  
REPRODUCTION IN WHOLE OR IN PART IS STRICTLY FORBIDDEN.

REQ. PER UNIT	MODEL	ASSY. NO.	DATE
			11-7-61
USED ON			
SC-145			

STANDARD DRAWING

UNLESS OTHERWISE SPECIFIED: DIMENSIONS ARE IN INCHES TOLERANCES ON FRAC. $\pm 1/64$ DEC. $\pm .5$ ANGLES $\pm 1/20$		REMOVE ALL BURRS AND SHARP EDGES WILL BE CAUSE FOR REJECTION. MAXIMUM ALLOWABLE TOLERANCES HAVE BEEN DETERMINED AND ANY DEVIATIONS	
SCALE: $\frac{1}{101}$		TYPE & TEMPER HEAT TREAT. SPEC.	
DESCRIPTION		FINISH & SPEC. NO.	
DATE		ELEC. DES. APP.	
CH. NO.		MECH. DES. APP.	
DRAFTS		DRAWN	
CHECKER		CHECKED	
ENG. APP.		FINAL APPROVAL	
STOCK SIZE		MATERIAL	
THE TECHNICAL MATERIEL CORP. MAMARONECK, NEW YORK		NICKEL PLATE	
SCREW MACHINE CONTACT MOUNTING		ANGER	
PART NO.		REQ. ITEM	
ANGER		DESCRIPTION	
SYMBOL		SC-146	



USED ON		ASS'Y. NO.		MODEL		REPRODUCTION IN WHOLE OR IN PART IS STRICTLY FORBIDDEN. OF THE TECHNICAL MATERIEL CORP. ITS UNAUTHORIZED USE OR THE CONTENTS OF THIS DRAWING ARE THE EXCLUSIVE PROPERTY	
DATE		A-2532		MFR-1/T		PER UNIT	
SC-146		5-24-62		8		1	



# STANDARD DRAWING

THE CONTENTS OF THIS DRAWING ARE THE EXCLUSIVE PROPERTY OF THE TECHNICAL MATERIEL CORP. ITS UNAUTHORIZED USE FOR REPRODUCTION IN WHOLE OR IN PART IS STRICTLY FORBIDDEN.

REQ. PER UNIT 2

MODEL DAC'S

USED ON

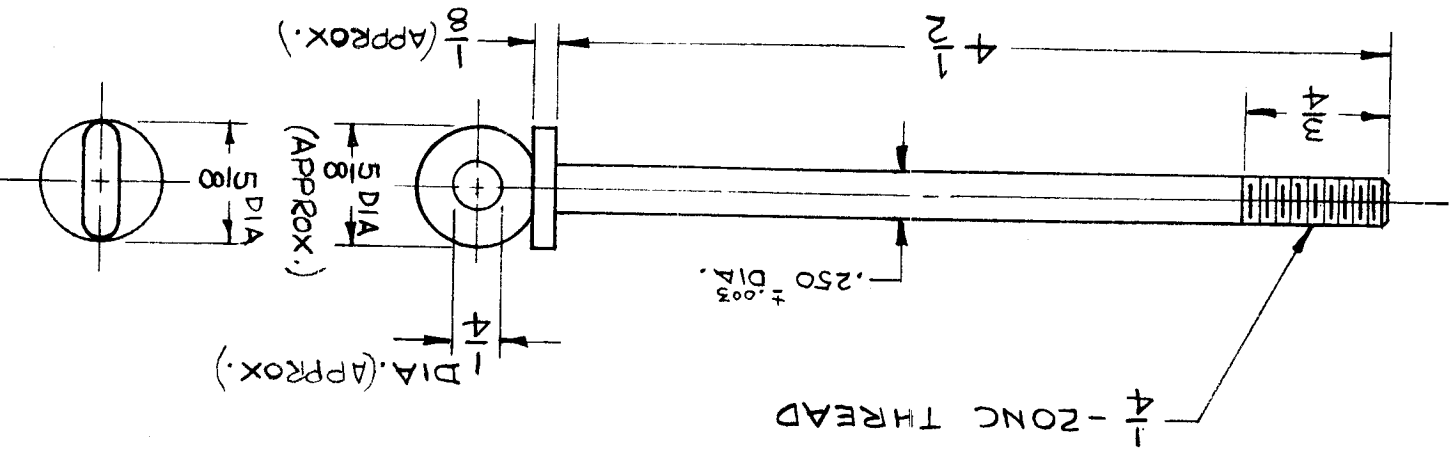
ASS'Y. NO.

5-29-63

DATE

SC 149

B



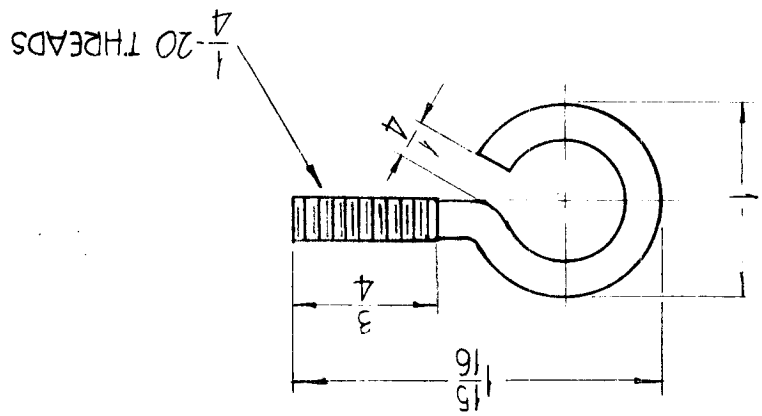
MATERIAL: CRES-CL F5-304 (FORGED STAINLESS STEEL)  
 SPEC: QQ-S-763  
 TENSILE STRENGTH - 90,000 PSI MIN.

SYMBOL		DESCRIPTION		PART NO.	REQ. ITEM
		HAY			
		THE TECHNICAL MATERIEL CORP. MAMARONECK, NEW YORK			
		BOLT, EYE			
		MATERIAL			
		SEE NOTE			
		STOCK SIZE			
		TYPE & TEMPER			
		HEAT TREAT. SPEC.			
		DRAWN			
		CHECKED			
		FINAL APPROVAL			
		SCALE		1/1	
		DATE		3-21-66	
		CH. NO.		15973	
		DRAFTS		WLA	
		CHECKER		WLA	
		ENG. APP.		WLA	
		DESCRIPTION		CHGD 4-5/16 TO 4-1/2. CHGD 1/4 TO .250 DIA.	
		UNLESS OTHERWISE SPECIFIED			
		DIMENSIONS ARE IN INCHES AND INCLUDE			
		CHEMICALLY APPLIED OR PLATED FINISHES			
		FRACTIONS			
		TOLERANCES			
		ANGLES			
		± 0° 30'			
		± 1/64			
		± .01			
		± .005			
		DECIMALS			
		CODE		5401-215 (A10518-A)	
		FINISH & SPEC. NO.			
		ELEC. DES. APP.			
		MECH. DES. APP.			
		SC 149			
		B			





DECIMALS .XXX ±.005 .XX ±.01 .X ±.05 ± 1/64 ANGLES ± 0° 30'		TOLERANCES		CODE		FINISH & SPEC. NO.		ELEC. DES. APP.		MECH. DES. APP.	
UNLESS OTHERWISE SPECIFIED DIMENSIONS ARE IN INCHES AND INCLUDE CHEMICALLY APPLIED OR PLATED FINISHES		SCALE 1"=1"		TYPE & TEMPER		HEAT TREAT. SPEC.		DRAWN		CHECKED	
SYM		DESCRIPTION		DATE		CH. NO.		DRAFTS		CHECKER	
EYE BOLT		COLD-ROLLED STEEL		MATERIAL		SRG		SRG		SRG	
THE TECHNICAL MATERIEL CORP. MAMARONECK, NEW YORK		ROD 1/4 DIA.		STOCK SIZE		EYE BOLT		F. BUDETTI		DESCRIPTION	
REQ. ITEM		PART NO.		DESCRIPTION		SYMBOL					



REQ. PER UNIT		4		GPT-200K		A-2706		4-6-64		SC-161	
USED ON		MODEL		ASSY. NO.		DATE					

DECIMALS  
 X ± .05  
 XX ± .01  
 XXX ± .005  
 FRACTIONS  
 ± 1/64  
 ± 0.30'  
 ANGLES  
 TOLERANCES

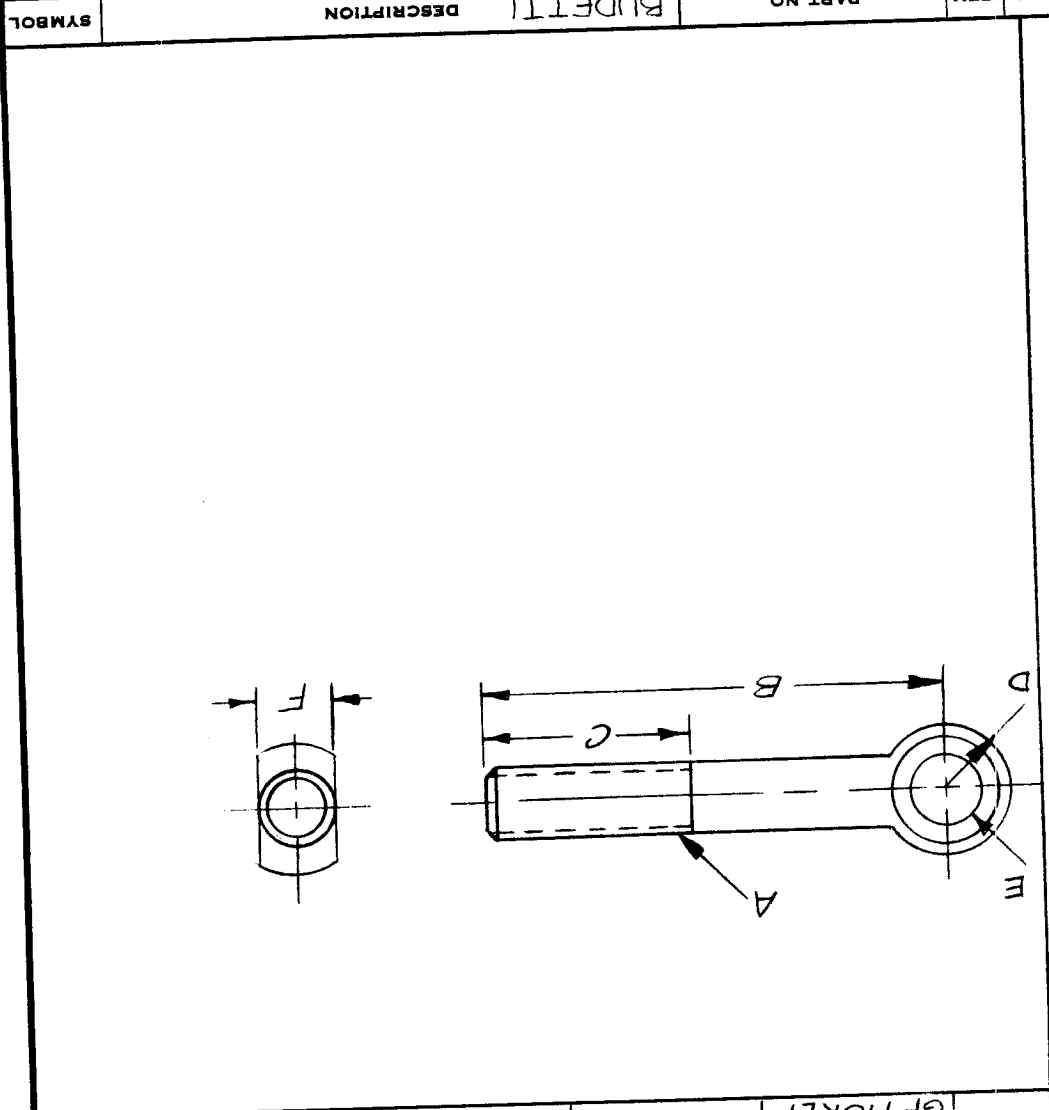
UNLESS OTHERWISE SPECIFIED  
 DIMENSIONS ARE IN INCHES AND INCLUDE  
 CHEMICALLY APPLIED OR PLATED FINISHES

SYM	DESCRIPTION	DATE	CH. NO.	DRAFTS	CHECKER	ENG. APP.
Ø	ORIGINAL RELEASE FOR PRODUCTION	12/17/65	M	Jc		

SCALE  
 DO NOT SCALE  
 CODE  
 S401-360 (EB)

REQ. ITEM PART NO. BUDETTI  
 STOCK SIZE  
 MATERIAL  
 COLD FINISH STEEL  
 TYPE & TEMPER HEAT TREAT. SPEC  
 C-1018 HARDENED  
 FINISH & SPEC. NO.  
 BLACK PENTRATE

THE TECHNICAL MATERIEL CORP.  
 MAMARONECK NEW YORK  
 EYE BOLT, SWING  
 DRAWN 12/16/65  
 CHECKED  
 RECD. DES. APP. 12/15/65  
 MECH. DES. APP.  
 SC164  
 FINAL APPROVAL 12/17/65



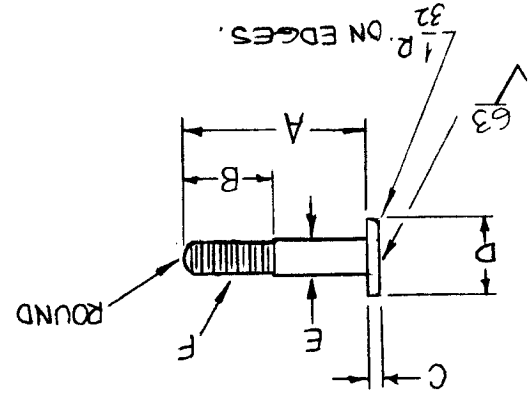
TMC P/N	MEG P/N	A	B	C	D	E	F
SC164-1	EB-1	1/4-20 2"	3/4	3/16 5/8	1/4	1/2R	3/8 SF 1/2
SC164-2	EB-2	3/8-16	3-3/4	1-1/2	1/2R	3/8 SF	1/2

STANDARD DRAWING

USED ON  
 ASS'Y. NO.  
 DATE  
 SC164  
 Ø

DECIMALS X ± .05 XX ± .01 XXX ± .005		FRACTIONS ± 1/64 ± 0° 30'		TOLERANCES		UNLESS OTHERWISE SPECIFIED DIMENSIONS ARE IN INCHES AND INCLUDE CHEMICALLY APPLIED OR PLATED FINISHES		SCALE		DESCRIPTION		SYM	
FINISH & SPEC. NO.		ELEC. DES. APP. MECH. DES. APP.		SEE CHART		TYPE & TEMPER		MATERIAL		DATE		X	
SC165		A.A.		SEE CHART		SRG		BRASS		12-18-64		EXP. RELEASE	
E		A.A.		SEE CHART		SRG		BRASS		3.10.65		SC165-2 ADDED	
E		A.A.		SEE CHART		SRG		BRASS		11/18/66		ORIGINAL RELEASE	
E		A.A.		SEE CHART		SRG		BRASS		11/18/66		-1 DIM. A WAS 1.0" DIA CHG TO PERFECT CHT-1	
E		A.A.		SEE CHART		SRG		BRASS		6.19.68		ADDED SC165-3	
E		A.A.		SEE CHART		SRG		BRASS		5.12.69		ADDED -4-5 FN CHT	
E		A.A.		SEE CHART		SRG		BRASS		8.11.69		ADDED -6 P/N CHT	
E		A.A.		SEE CHART		SRG		BRASS		12.22.68		ADD -7 P/N CHART	

SYMBOL	DESCRIPTION	PART NO.	REQ. ITEM	DATE	BY	REVISION
F	BUDETTI			12/22/68	MD	19690 KH
D				8.11.69	MD	9525 GE
C				5.12.69	MD	9419 GE
B				6.19.68	MD	18961 KH
A				11/18/66	MD	17295 UTH



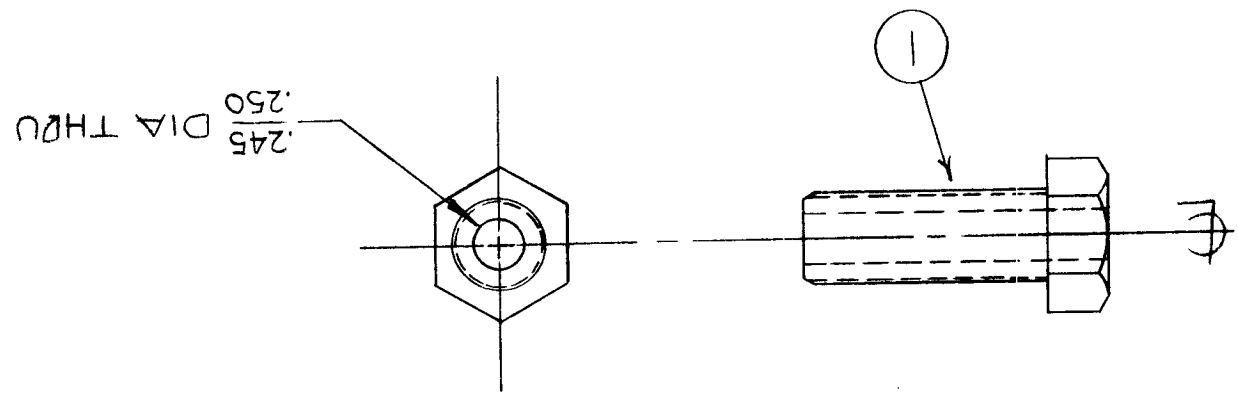
TMC P/N	A	B	C	D	E	F	FINISH	REQ. PER UNIT	MODEL	ASSY. NO.	DATE	USED ON
SC165-1	.875	.312	0.65:070	3/8	.180	6-32	S245 SILVER PL.	9	RFTA-1		12-18-64	SC165
-2	1.125	"	"	"	"	"	"	5	"	"	"	"
-3	.9375	"	"	"	"	"	"	"	"	"	"	"
-4	1.562	.625	.187	3/4	.248	10-32	"	"	"	"	"	"
-5	1.562	.625	.187	7/16	.248	10-32	"	"	"	"	"	"
-6	1/2	7/16	3/16	1/2	.248	10-32	"	"	"	"	"	"
-7	1-1/8	15/16	3/16	7/16	.248	1/4-20	"	"	"	"	"	"

DECIMALS X ± .05 XX ± .01 XXX ± .005	TOLERANCES	FRACTIONS ± 1/64 ± 0° 30'
UNLESS OTHERWISE SPECIFIED DIMENSIONS ARE IN INCHES AND INCLUDE CHEMICALLY APPLIED OR PLATED FINISHES		
SYN	DESCRIPTION	SCALE
∅	PRODUCTION ORIGINAL DRAWING	1/1
A	CHGD 1/4 TO .245 DIA. 1.5-67 17587 RME	DATE 6-22-66 CH. NO. ∅ DRAFTS CHECKER ENG. APP.

REQ. ITEM	PART NO.	DESCRIPTION	SYMBOL
1	SC143-5013-H20	BOLT, MACHINE	

THE TECHNICAL MATERIEL CORP. MAMARONECK, NEW YORK	SCREW, NYLON
STOCK SIZE	#
MATERIAL	#
TYPE & TEMPER	#
HEAT TREAT. SPEC.	#
DRAWN	WTV
CHECKED	005
FINAL APPROVAL	005
CODE	SC167

FINISH & SPEC. NO.	ELEC. DES. APP.	MECH. DES. APP.
M/L		
REPROV. NO. 440H	23843	A



REQ. PER UNIT	2
MODEL	40K BASIC
ASS'Y. NO.	3-24-66
DATE	3-24-66
USED ON	SC167
SYMBOL	A