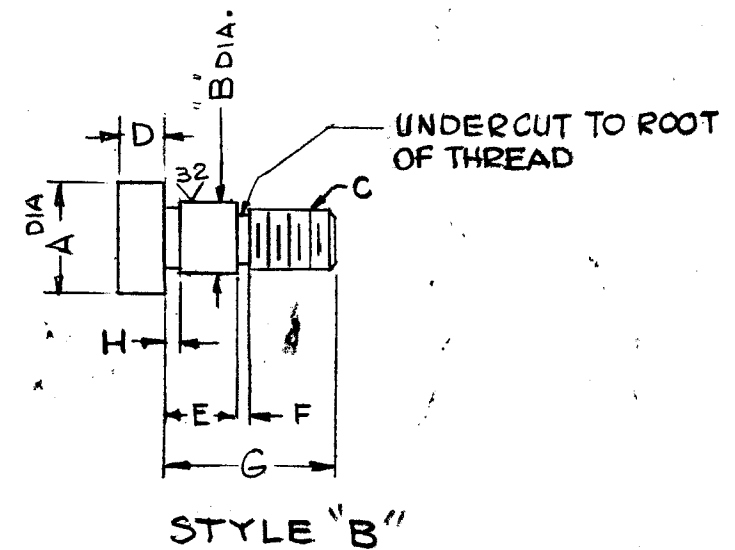
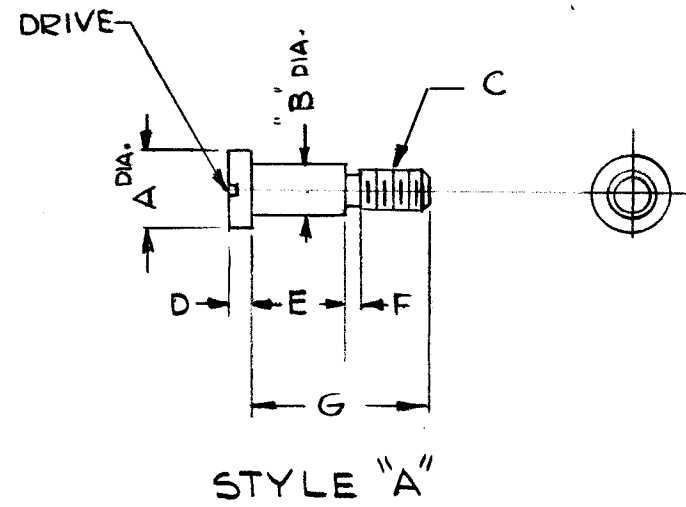


TMC PART No	STYLE	DIMENSIONS							"C" THREAD	DRIVE	MATERIAL & TYPE	FINISH	VENDOR	REVISIONS						
		A	B	D	E	F	G	H						SYM	DESCRIPTION	DATE	E.M.N. NO.	DRAFT	CHKD	APPD
SC162-1	A	3/16	.1245 .1248	1/16	1/4	1/32	15/32	-	4-40	1/32X1/32 SLOT	STAINLESS STEEL 303	S104 PASSIVATE	CODE A	X	EXPER. RELEASE	11-19-64		G.D.L.		
SC162-2	B	9/16	.371 .373	1/4	3/8	.003 MAX	7/8	.093 MAX	5/16-18	3/16 ALLEN	ALLOY STEEL 4037	BLACK OXIDE	S401-360 (MS-11)	X1	CHART Y STYLE "B" ADDED -	2-25-65		G.D.L.		
														Ø	ORIGINAL RELEASE FOR PRODUCTION	3-16-65	6	J.F.		



REQ'D.	ITEM	PART NUMBER	DESCRIPTION	SYMBOL
LIST OF MATERIAL				
MATERIAL		SEE CHART	THE TECHNICAL MATERIEL CORP. MAMARONECK, NEW YORK	
FINISH		SEE CHART	TITLE SCREW, SHOULDER	
Q'TY./UNIT		MODEL USED ON	ASS'Y. NO.	
SCALE DO NOT SCALE		CODE C	S401-(SEE CHART)	
UNLESS OTHERWISE SPECIFIED DIMENSIONS ARE IN INCHES AND INCLUDE CHEMICALLY APPLIED OR PLATED FINISHES		DECIMALS .X ± .05 .XX ± .01 .XXX ± .005	TOLERANCES FRACTIONS ± 1/64 ANGLES ± 0° 30'	DRAWN G.D.L. DATE 11-19-64 CHECKED JCB DATE 2/26/65 ELECT. DES. DATE MECH. DES. JRD DATE 2-26-65
THE CONTENTS OF THIS DRAWING ARE THE EXCLUSIVE PROPERTY OF THE TECHNICAL MATERIEL CORP. ITS UNAUTHORIZED USE OR REPRODUCTION IN WHOLE OR IN PART IS STRICTLY FORBIDDEN.		FINAL APPROVAL RAC		DATE
NOTES		SC162		Ø
		SHEET		REV. LTR.