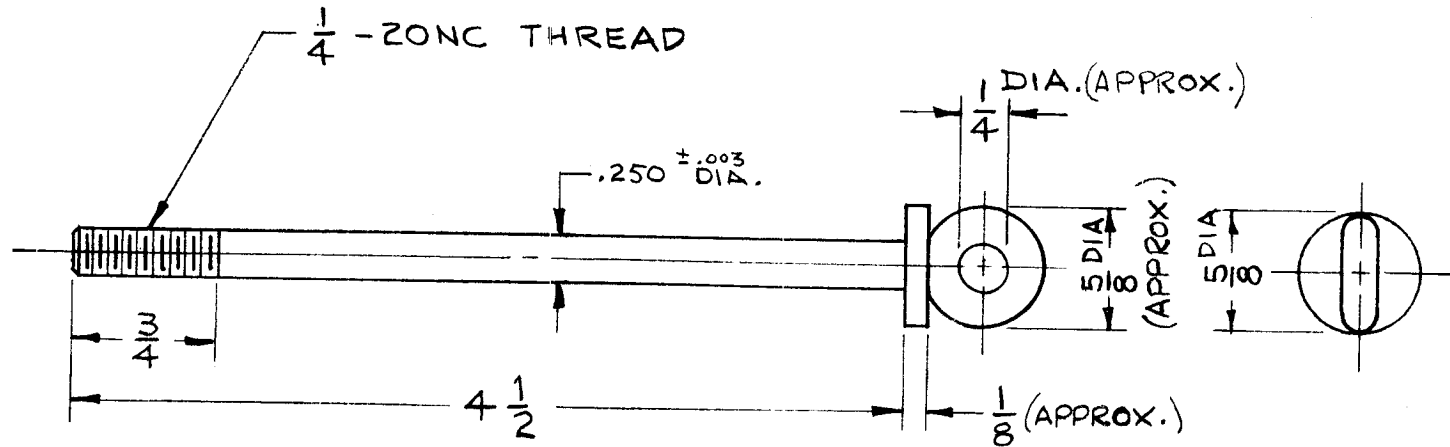


# STANDARD DRAWING

THE CONTENTS OF THIS DRAWING ARE THE EXCLUSIVE PROPERTY OF THE TECHNICAL MATERIEL CORP. ITS UNAUTHORIZED USE FOR REPRODUCTION IN WHOLE OR IN PART IS STRICTLY FORBIDDEN.

REQ. PER UNIT	USED ON			SC 149	B
	MODEL	ASS'Y. NO.	DATE		
2	DAC'S		5-29-63		



MATERIAL: CRES - CL FS-304 (FORGED STAINLESS STEEL)  
 SPEC: QQ-S-763  
 TENSILE STRENGTH - 90,000 PSI MIN.

							REQ. ITEM	PART NO.	HAY	DESCRIPTION	SYMBOL
B	CHGD 4-5/16 TO 4-1/2. CHGD 1/4 TO .250 DIA.	12-13-66	17482	RME	QCP	MA	STOCK SIZE		THE TECHNICAL MATERIEL CORP. MAMARONECK, NEW YORK		
A	ON EYE DIMS. ADD. "APPROX."	3-21-66	15973	HLLA	QCB	QA	SEE NOTE		BOLT, EYE		
SYM	DESCRIPTION	DATE	CH. NO.	DRAFTS	CHECKER	ENG. APP.	MATERIAL				
UNLESS OTHERWISE SPECIFIED DIMENSIONS ARE IN INCHES AND INCLUDE CHEMICALLY APPLIED OR PLATED FINISHES		SCALE		1/1					QWZ	JHE 6/3/63	TFH 6.4.63
DECIMALS .X ± .05 .XX ± .01 .XXX ± .005	TOLERANCES	FRACTIONS ± 1/64 ANGLES ± 0° 30'	CODE	S401-215 (A10518-A)			TYPE & TEMPER	HEAT TREAT. SPEC.	DRAWN	CHECKED	FINAL APPROVAL
							FINISH & SPEC. NO.		ELEC. DES. APP.	MECH. DES. APP.	SC 149 B