

FINISH CHART

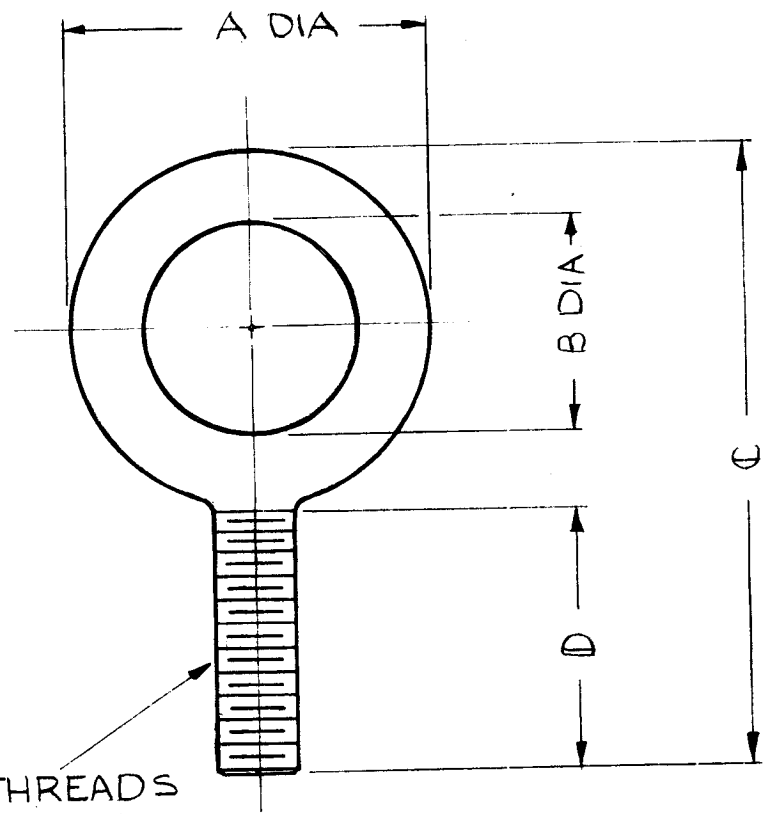
SYMBOL	FINISH
N	NO FINISH
C	S105 CADMIUM PLATE
G	S115 TMC SMOOTH GRAY ENAMEL

NOTES
 HEAT TREATED & SAFE W/L : 1 TON
 "VULCAN" WELDLESS #4 PATTERN.

TMC PT/NO	A	B	C	D	E	FIN
SC142	1-27/32	1-3/32	3-1/4	1-3/8	7/16-14	C
SC142-2	2	1-1/4	3-1/8	1-1/8	3/8-16	C

REQ. PER UNIT	USED ON		
	MODEL	ASSY. NO.	DATE
			8-26-59

SC-142 B



NOMENCLATURE TO BE AS SHOWN
SC-142-C
 TMC DWG. NO. FINISH (CADMIUM PLATE)

ISSUE	ITEM	CHANGED FROM	DATE	CH. NO.	DRAFTS	CHECKER	ENG. APP.
B	1	DRWG TABULATED	12.6.66	1786	WHD	JCB	JCB
A	1	7/16-14 Thd was 7/16-20	2/21/61	4245	JLQ	JCB	JCB

REQ.	ITEM	PART NO.	DESCRIPTION	SYMBOL
		SEE TABLE	THE TECHNICAL MATERIEL CORP. MAMARONECK, NEW YORK EYEBOLT, THREADED	
		STOCK SIZE		
		FORGED STEEL		
		MATERIAL		
			J.C. Biele	
			DRAWN CHECKED FINAL APPROVAL	
		TYPE & TEMPER		
		HEATTREAT. SPEC.		
		FINISH & SPEC. NO.		
			ELEC. DES. APP MECH. DES. APP	

DEC. DIM. ±
 FRAC. DIM. ±
 ANGULAR DIM. ±

SCALE: S-401-73
 MAXIMUM ALLOWABLE TOLERANCES HAVE BEEN DETERMINED AND ANY DEVIATIONS WILL BE CAUSE FOR REJECTI N.
 REMOVE ALL BURRS AND SHARP EDGES

SEE CHART

SC-142 B