

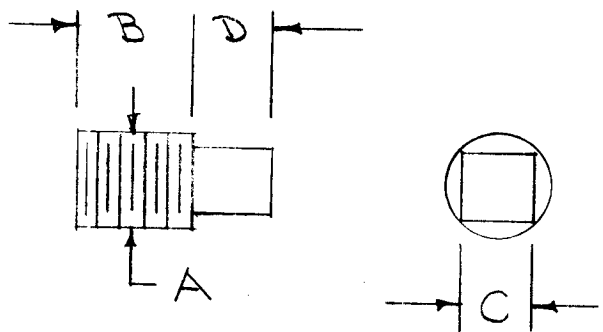
IF IT IS FOUND DESIRABLE TO CHANGE ANY TOLERANCE OR OTHER DETAIL SPECIFIED ON THIS DRAWING NOTIFY THE PURCHASER PROMPTLY.

SC-121

MAXIMUM ALLOWABLE TOLERANCES HAVE BEEN DETERMINED AND DEVIATIONS WILL BE CAUSE FOR REJECTION. REMOVE ALL BURRS AND SHARP EDGES

USED ON

TMC NO. →		SC-121-1	SC-121-2	SC-121-3	SC-121-A	SC-121-4	SC-121-5	SC-121-6
A	DRYSEAL TAPER THREADS LONG	1/16-27	1/8-27	1/4 x 18	3/8-18	1/2-14	3/4-14	1-11-1/2
B	BODY LENGTH MAX.	.350	.350	.525	.525	.700	.710	.870
	" " MIN.	.330	.330	.495	.495	.660	.670	.830
C	HEAD WIDTH MAX.	.221	.283	.377	.440	.565	.627	.815
	" " MIN.	.214	.276	.370	.428	.553	.615	.803
D	HEAD HEIGHT MAX.	.193	.255	.300	.335	.410	.470	.540
	" " MIN.	.178	.240	.280	.310	.380	.440	.500
CAT No.	MATERIAL BRASS - PLAIN	444566	444572	444578	444584	444590	444596	444602



REF: PIPE PLUGS INC., WELLINGTON OHIO.

REQ.	ITEM	PART NO.	DESCRIPTION	SYMBOL
			THE TECHNICAL MATERIEL CORP. MAMARONECK, NEW YORK	
		STOCK SIZE	PIPE PLUG	
		SEE CHART.	SQUARE HEAD	
		MATERIAL	WEIGHT PER PC.	
		TYPE & TEMPER	ADD. 1-4-55	
			DRAWN	ELEC. DES. APP. MECH. DES. APP.
		HEAT TREAT. SPEC.	1-4-55	
		SEE CHART	CHECKED	FINAL APPROVAL
		FINISH & SPEC. NO.		SC-121

ISSUE	ITEM	CHANGED FROM	DATE	CN. NO.	DRAFTS	CHECKER	ENG. APP.
TOLERANCES		SCALE					
ALL OTHERS	DEC. DIM. ± FRAC. DIM. ± ANGULAR DIM. ±	DRILL, PUNCH, COMMERCIAL STOCK SIZES AND MANUFACTURERS TOLERANCES ARE NOT INCLUDED.					