

IF IT IS FOUND DESIRABLE TO CHANGE ANY TOLERANCE OR OTHER DETAIL SPECIFIED ON THIS DRAWING NOTIFY THE PURCHASER PROMPTLY.

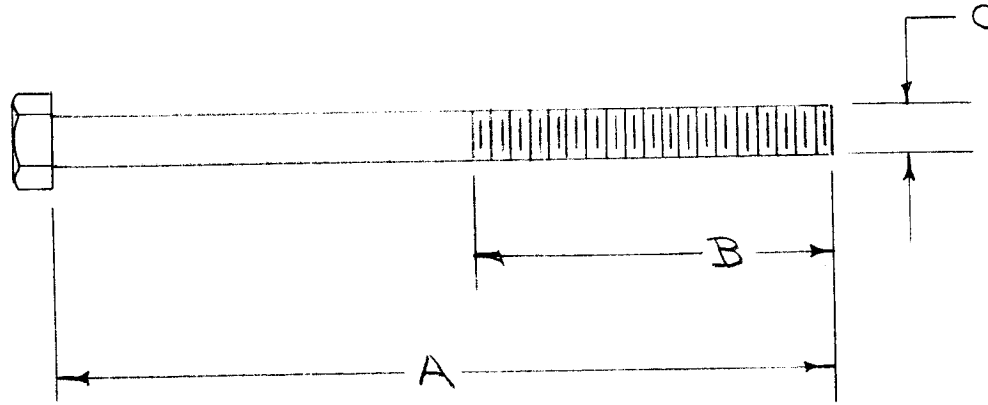
SC-120 A

MAXIMUM ALLOWABLE TOLERANCES HAVE BEEN DETERMINED AND DEVIATIONS WILL BE CAUSE FOR REJECTION. REMOVE ALL BURRS AND SHARP EDGES

USED ON

NO.	QUAN.	MODEL	PROJECT NO.	ASS'Y. NO.	DATE
SC-120-1		KS-85-X	J-227	A-499	4-27-54
SC-120-2					
SC-120-3	4	CTAC		A-799	12-20-56

TMC-NO	A	B	C	MATERIAL	FINISH
SC-120-1	A	1/8	1/4-20	BRASS	CAD. PLATE S-105 .002
SC-120-2	2/4	1/8	1/4-20	BRASS	CAD. PLATE S-105 .002
SC-120-3	2 1/2	2 1/2	1/4-20	STAINLESS STEEL	PASSIVATE



REQ.	ITEM	PART NO.	DESCRIPTION	SYMBOL
		#	THE TECHNICAL MATERIEL CORP. MAMARONECK, NEW YORK	
		STOCK SIZE		
		SEE CHART	BOLT, HEX HEAD	
		MATERIAL		
		WEIGHT PER PC.		
		TYPE & TEMPER	ADD. 4-27-54	WOC
		HEAT TREAT. SPEC.	DRAWN	ELEC. DES. APP.
		FINISH & SPEC. NO.	MECH. DES. APP.	
			FINAL APPROVAL	
			SC-120	A

A	2	SC-120-3 ADDED	12/20/56	1	VS	JAL	APP
	1	MATERIEL & FINISH ADDED					
ISSUE	ITEM	CHANGED FROM	DATE	CN. NO.	DRAFTS	CHECKER	ENG. APP.

TOLERANCES		SCALE	
ALL OTHERS	DEC. DIM. ± FRAC. DIM. ± ANGULAR DIM. ±	DRILL, PUNCH, COMMERCIAL STOCK SIZES AND MANUFACTURERS TOLERANCES ARE NOT INCLUDED.	