

IF IT IS FOUND DESIRABLE TO CHANGE ANY TOLERANCE OR OTHER DETAIL SPECIFIED ON THIS DRAWING NOTIFY THE PURCHASER PROMPTLY.

STANDARD DRAWING

SC-106 B

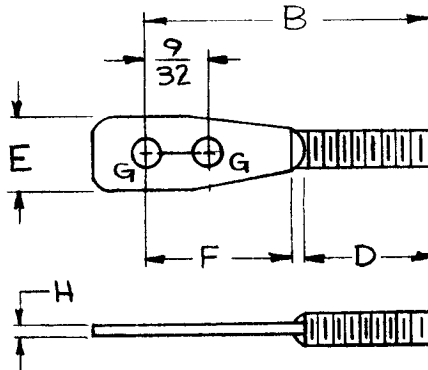
MAXIMUM ALLOWABLE TOLERANCES HAVE BEEN DETERMINED AND DEVIATIONS WILL BE CAUSE FOR REJECTION. REMOVE ALL BURRS AND SHARP EDGES

USED ON

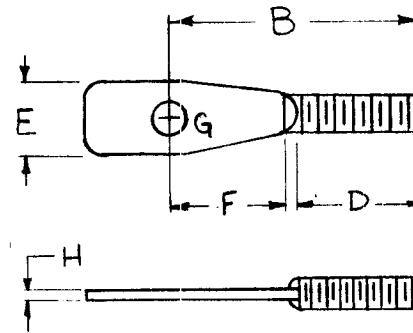
MODEL PROJECT NO. ASS'Y. NO. DATE

TMC NO.	CAT. NO.	THD.	B	D	E	F	G (HOLE)	H	STYLE	MFG. REF.
SC-106-1	2008	6-32	9/16	9/32	1/4	1/4	.141	.045	1	A
SC-106-2	4211 MOD.	6-32	27/32	9/32	1/4	1/2	.138	3/64	2	B
SC-106-3	4215 MOD.	4-40	15/32	1/4	7/32	5/32	.067	.031	1	B

DIMENSIONS FOR REFERENCE ONLY.



STYLE-2



STYLE-1

MFG REF	B	AMATON ELECTRONIC HARDWARE		
	A	UNITED SCREW & BOLT CORP.		
REQ. ITEM	PART NO.	DESCRIPTION		SYMBOL
		THE TECHNICAL MATERIEL CORP.		
		MAMARONECK, NEW YORK		
	STEEL		BOLT, SPADE	
			REGULAR TYPE	
			CDD. 8-27-52	G.T.O. <i>[Signature]</i>
			DRAWN	ELEC. DES. APP.
			MECH. DES. APP.	
			MADE 9-26-52	
			CHECKED	FINAL APPROVAL
				SC-106 B

B	1	SC-106-3 ADDED	1/12/68	187/2	<i>[Signature]</i>	<i>[Signature]</i>	OP
A	2	STYLE (2) ADDED	2-19-63	8258	<i>[Signature]</i>	<i>[Signature]</i>	
T		SC-106-2 ADDED					
ISSUE	ITEM	CHANGED FROM	DATE	CN. NO.	DRAFTS	CHECKER	ENG. APP.

TOLERANCES		SCALE	
ALL OTHERS	DEC. DIM. ± FRAC. DIM. ± ANGULAR DIM. ±	DRILL, PUNCH, COMMERCIAL STOCK SIZES AND MANUFACTURERS TOLERANCES ARE NOT INCLUDED.	