

TMC SPECIFICATION

NO. S 899

REV: 0

COMPILED: FRD

CHECKED:

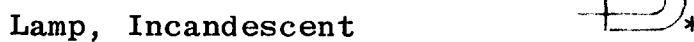
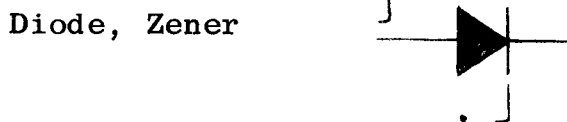
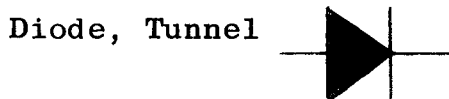
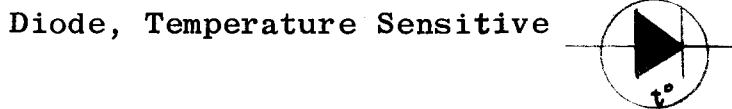
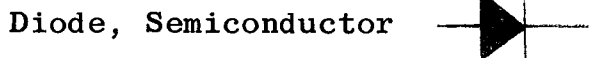
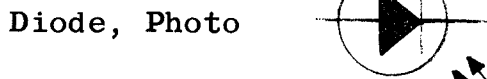
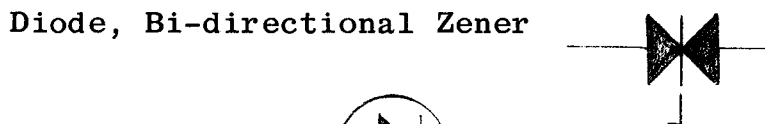
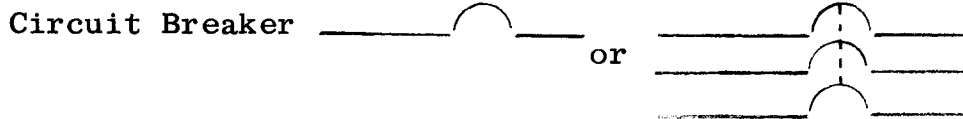
APPD: 

SHEET 2 OF 5

TITLE: SCHEMATIC SYMBOLS

Typed by ev

THIS SPECIFICATION WILL ACT AS A READY REFERENCE TO COMMONLY USED SYMBOLS AS DICTATED BY MIL-STANDARD-15. IN THE EVENT OF ANY CONFLICT, THE LATEST REVISION OF MIL-STD-15 WILL TAKE PRECEDENCE.



*Insert color:
A-Amber, B-Blue,
C-Clear, G-Green,
O-Orange, P-Purple,
R-Red, W-White,
Y-Yellow

TMC SPECIFICATION

NO. s 899

REV: 0

COMPILED: FRD

CHECKED:

APPD: *[Signature]*

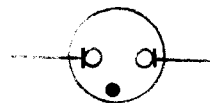
SHEET 3 OF 5

TITLE: SCHEMATIC SYMBOLS

Typed by ev

Symbols (continued)

Lamp, Neon

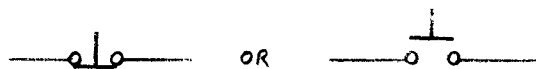


(For use on AC)



(For use on DC. Polarity markings are not part of symbol)

Push Button



Resistor, Non-linear
(Voltage Sensitive)

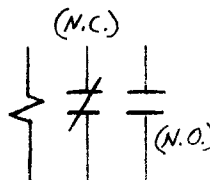


Resistor, Variable

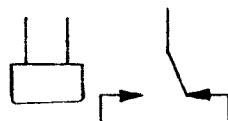


(Note: CW shows full clockwise position looking from shaft end.)

Relay, High Power
(greater than 10 Amps)

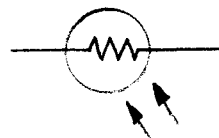


Relay, Low Power



(Note: Contacts shall be shown unenergized with the armature away from the coil)

Selenium Cell (photo-resistor or photoconductor)



Switch, PNPN (Shockley Diode)



TMC SPECIFICATION

NO. s 899

REV: 0

COMPILED: FRD

CHECKED:

APPD: 

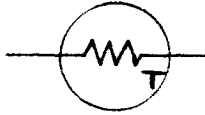
SHEET 4 OF 5

TITLE: SCHEMATIC SYMBOLS

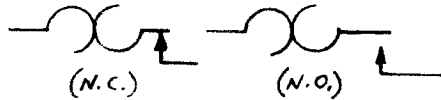
Typed by ev

Symbols (continued)

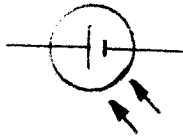
Thermistor



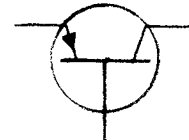
Thermostat



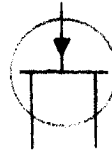
Transducer, Photovoltaic



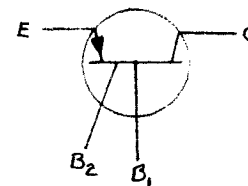
Transistor (Note: 1. Arrowhead does not touch base line.
2. PNP type shown. For NPN type, REVERSE direction of arrow.)



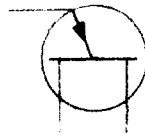
Transistor, Field Effect



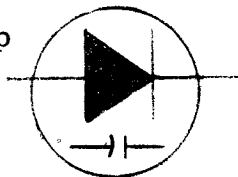
Transistor, Tetrode (Letters are not part of symbol.)



Transistor, Unijunction



Varicap



TMC SPECIFICATION

NO. S 899

REV: 0

COMPILED: FRD

CHECKED:

APPD: *[Signature]*

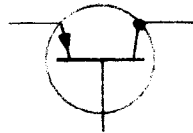
SHEET 5 OF 5

TITLE: SCHEMATIC SYMBOLS

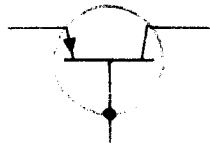
Typed by ev

NOTE: Whenever the case of a component is electrically connected to any of its leads, it shall be so indicated on the schematic.

e.g.:



(power transistor)



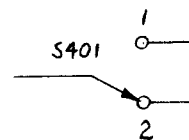
(R. F. transistor)

GENERAL: 1. Where a control is labeled either on the **FRONT PANEL**, on the **REAR APRON**, or on the **MAIN CHASSIS**; the label shall appear on the schematic next to the control and boxed as it appears on the equipment. Positions, if any, should be shown likewise.



AGC CONTROL

UNIT



SCHEMATIC

S401

AGC CONTROL	
1	OFF
2	ON

