







# TMC SPECIFICATION

NO. S 1185

REV:  $\emptyset$  A

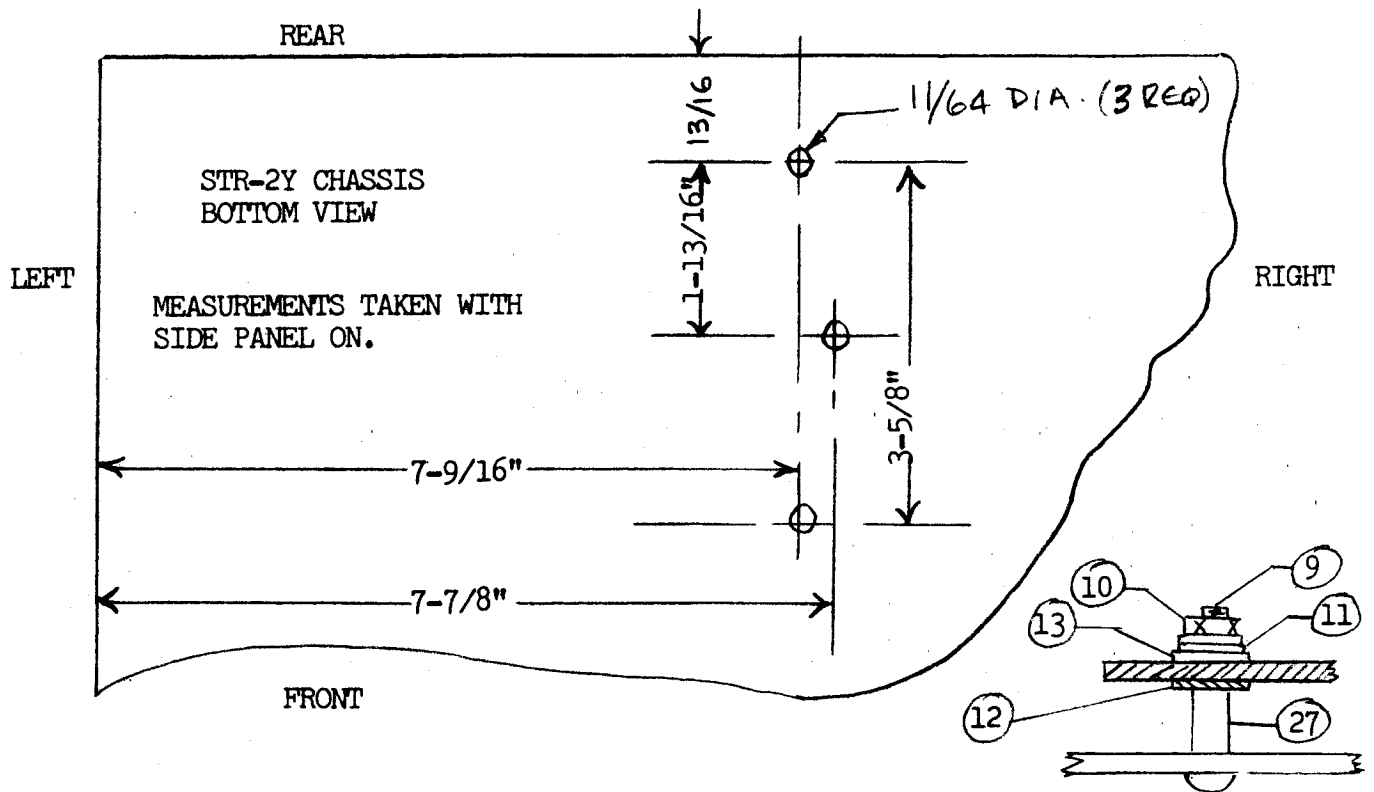
COMPILED: NAB      CHECKED:      APPD:      SHEET 4 OF 7

TITLE: STR-2Y MODIFICATION INSTRUCTIONS KIT-331

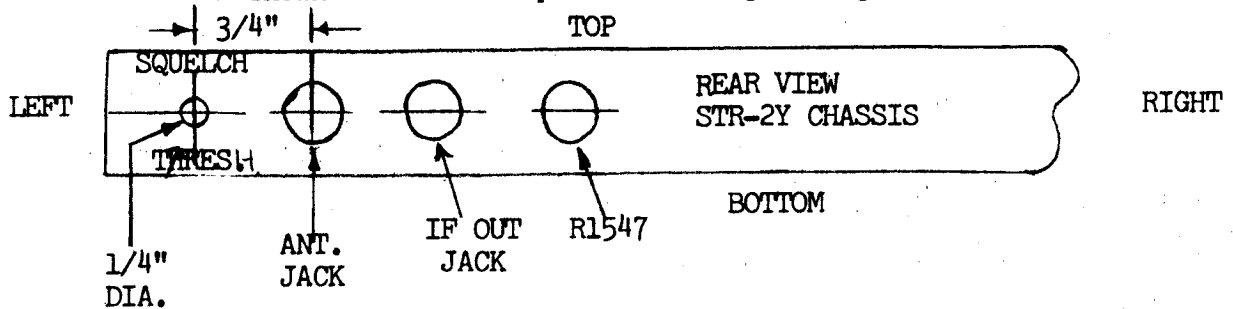
typed by vita      9/27/67

### III. PROCEDURE:

- Using items 9,10,11,12,13, & 27 install A4551 (Item 1). See drilling and mounting details below.



- Install R1557 (Item 3) RV106WX10C501A. Use drilling plan as shown below. Stamp with Items 30 and 31.



Mount R1557 with wiper pin closest to left side of chassis.

# TMC SPECIFICATION

No. s 1185

REV:

Ø

A

COMPILED: NAB

CHECKED:

APPD:

SHEET 5 OF 7

TITLE: STR-2Y MODIFICATION INSTRUCTIONS KIT-331

typed by vita 9/27/67

3. Remove 5 screws securing A4020 Board and gently lift rear out and upward.
  - a. Remove C1807.
  - b. Connect a .1 uf capacitor (Item 2) between junction CR1803 and CR-1805 and ground.
  - c. Change value of L1801 from 47,000 uh to 10,000 uh. (Item 4)
  - d. Change value of R1814 from 330  $\Omega$  to 560  $\Omega$  . (Item 5)
  - e. Change value of R1534 from 4.7K to 1K , (Item 6), Adjacent to R1547 on rear panel.
4. Remove 4 screws securing A3190 Board and locate 33 ohm resistor R1659 .
  - a. Drill #60 hole about 5/8" to the left of the back hole of R1659 on the audio board. See Figure 1. (ITEM 28)
  - b. Lift the front side of R1659 and insert into the new hole.
  - c. Connect a 18" ORANGE/WHITE wire (ITEM 7) to R1659 on the bottom side of the audio board and run to Terminal 10 on A3153 Power Supply Board.
5. From Terminal 1 of A4551 jumper to Terminal 8 and 13 using a RED wire 16" long to the positive side of C910. (ITEM 18)  
Refer to ITEM 29.
6. From Terminal 2 of A4551 run a BLUE wire to the bottom end of R1557. (Rear Panel) (12" ITEM 19)
7. From Terminal 3 of A4551 run a BLUE wire to the top end of R1557. (12" ITEM 19)
8. Jumper Terminal 4, 5 and 15 of A4551 with (ITEM 20) BLACK wire and from Terminal 4 of A4551 to the ground lug on the mounting screw of J1511, use the remainder of (ITEM 20).
9. From Terminal 6 of A4551 run a coax to the inside hole where C1807 was removed, ground the shield to Terminal 5 of A4551 12" (ITEM 21).
10. From Terminal 7 of A4551 run a coax to the outside hole where C1807 was removed, ground the shield to Terminal 5 of A4551. 12" (ITEM 21)
11. From Terminal 9 of A4551, run a ORANGE/WHITE wire to the junction of L1801 and R1805. (ITEM 22)

# TMC SPECIFICATION

NO. S 1185

REV: Ø

A

COMPILED: NAB

CHECKED:

APPD:

SHEET 6 OF 7

TITLE: STR-2Y MODIFICATION INSTRUCTIONS KIT-331

typed by vab 9/27/67

12. From Terminal 10 of A4551 run a VIOLET wire to the wiper of F1557. 12" (ITEM 23)
13. From Terminal 12 of A4551 connect a VIOLET wire and run it to Terminal 2 of J1511. (Remove all existing wire from Terminal 2.) 8" (ITEM 23)
14. Run a coax from Terminal 14 of A4551 to the junction of C1840 and P1809's collector. Ground the shield at Terminal 15 of A4551. 12" (ITEM 21)
15. From Terminal 16 of A4551 run a ORANGE wire to Terminal 14 on A3190 (audio board). (ITEM 24)
16.
  - a. Disconnect the VIOLET wires from Terminal 6 of A3190 (audio board).
  - b. Disconnect the VIOLET wire from Terminal 9 of A4020 (IF board). Pull out the VIOLET wire that was connected to Terminal 9 of A4020B.
  - c. Connect the remaining VIOLET wire that was connected to Terminal 6 of A3190 to Terminal 9 of A4020B.
17. Run a YELLOW wire to Terminal 17 of A4551 to Terminal 6 of A3190 (ITEM 25).
18. On Terminal 2 of J1511 there is a VIOLET wire that was disconnected in Step 13, above. Check this wire for continuity to Terminal 9 of A4020 (IF board). Splice a short piece of VIOLET wire to it and run to Terminal 11 on A4551.
19. From wiper of R1814, completely remove the wire which runs to the AGC line (this may be at the underside of Terminal 9 of A4020 ).
20. From Terminal 12 on A4551, run a VIOLET wire to the wiper of R1841. 10" (ITEM 23)
21. Remove R1658 on audio board (A3190) and replace with Item 17 (22K resistor).
22. Install Item 8 (20 mfd CAP ELECT.) in place formerly occupied by C-42. C-42 was removed when KIT-304-1 was installed. Positive side to Q10 BASE.
23. Carefully reinstall lifted boards. Test as per S1204 (ITEM 16). Attach nameplate (ITEM 14) when modification is complete.

# TMC SPECIFICATION

NO. S 1185

REV: Ø A

COMPILED: NAB      CHECKED:      APPD:      SHEET 7 OF 7

TITLE: STR-2Y MODIFICATION INSTRUCTIONS KIT-331

typed by vita      9/27/67

FIGURE 1

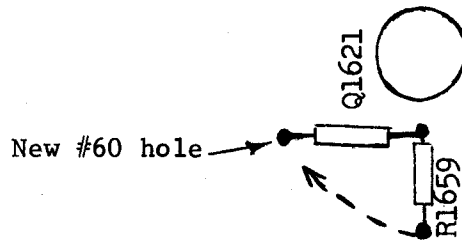
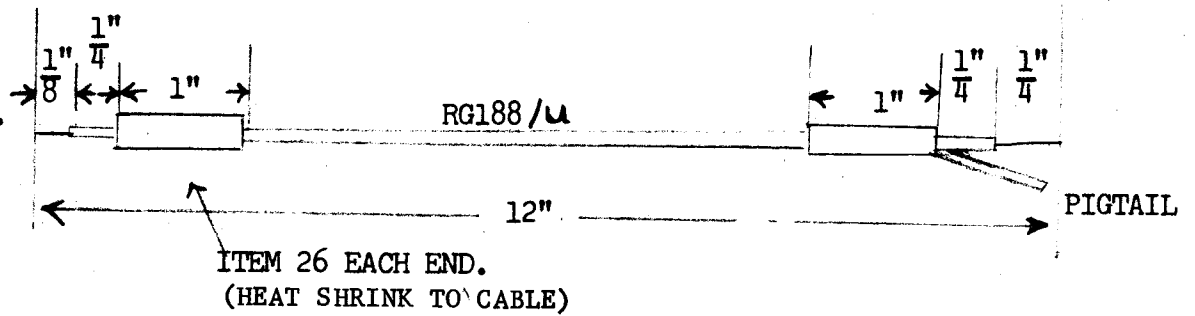


FIGURE 2



REVISION SHEET

THE TECHNICAL MATERIAL CORP.  
MAMARONECK  
NEW YORK

S 1185

LIST NO.

DATE	REV.	SHEET	EMN #	DESCRIPTION	APP.
8/31/67	Ø			ORIGINAL RELEASE FOR PRODUCTION	<i>Handwritten initials</i>
9-29-67	A	ALL	18532	COMPLETELY REVISED	<i>Handwritten initials</i>