

TMC SPECIFICATION

NO. S 1150

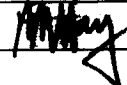
REV:

0 A 0

COMPILED: ASC

CHECKED:

APPD:



SHEET 1 OF 12

TITLE:

jb/ 11/4/66

KIT 247

NOTES: THIS KIT SUPPLEMENTS OR SUPERSEDES
KIT 206 ON PROTECT COVERS AS PER
PARTS PECULIAR NOTE 1

TMC SPECIFICATION

NO. S 1150

REV: **AB**

COMPILED: ASC

CHECKED:

APPD:

SHEET 2

OF 12

TITLE: KIT 247

I. EQUIPMENT AFFECTED

A. GPT-200K

II. PURPOSE

A. To provide protective covers for exposed hazardous voltages

III. MATERIALS SUPPLIED IN KIT

<u>ITEM</u>	<u>TMC Part No.</u>	<u>Qty.</u>	<u>Description</u>
1	KIT 246 (SI17)	1	KIT: Parts & Instruction for 10 & 40K portion
2	SC143-2520B8	12	Screw Machine Nylon Mtg XFMR Protect Covers
3	SC143-1032B8	34	Screw Machine Nylon Mtg Protect Covers
4	TE208-1-4.000R	8	Spacer, Mtg Items 10 & 11
5	TE208-1-4.500R	4	Spacer, Mtg Item 12
6	TE208-2-2.125R	2	Spacer, Mtg Item 9
7	MS-4495	12	Bracket, Mtg Item 13
8	MS4495-2	8	Bracket, Mtg Item 14
9	LD1797 (PX921)	2	Cover Protect Fin Resistor
10	LD1798-1 (PX-922-1)	2	Cover Protect Contactor
11	LD1798-2 (PX-922-2)	2	Cover Protect Contactor
12	LD1800 (PX-923)	2	Cover Protect Bus Bars
13	LD1799 (PX-919)	6	Cover Protect XFMR
14	PX1003	4	Cover Protect Circuit Breaker

TMC SPECIFICATION

NO. S 1150

REV: A B

COMPILED: ASC

CHECKED:

APPD:

SHEET 3 OF 12

TITLE: KIT 247

<u>ITEM</u>	<u>TMC Part No.</u>	<u>Qty.</u>	<u>Description</u>
15	NP753	4	Decal
16	NP362-46	1	Name Plate Modification
17	SM2520BN14	2	Stud, Use With Item 6
18	WA-109-5512	12	Washer Fiber

IV. TOOLS REQUIRED

To be supplied by Installing Activity.

1. Screw Driver Set (Phillips)
2. 1/2" Open End, Box or Socket type Wrench
3. 3/4" Open End, Box or Socket type Wrench
4. Screw Driver Blade Type

V. PROCEDURE

CAUTION -----CAUTION -----CAUTION

REMOVE ALL A.C. INPUT TO TRANSMITTER BEFORE
PROCEEDING WITH MODIFICATION. GROUNDOUT ALL
CIRCUITRY WITH ADEQUATE SHORTING DEVICE.

1. PREPARATION FOR MODIFICATION: KIT 246 being considered as accomplished (Refer Fig. I for location of pertinent components)
 - a. Open rear doors of Power Supply Frames A & B
 - b. Remove bottom rear panels of Power Supply Frames A & B
 - c. Remove High Voltage Rectifier Drawers from Power Supply Frames A & B
 - d. Remove Control Panel of Power Supply Frames A & B
2. INSTALLATION OF TRANSFORMER COVERS (ITEM 13)
Arrange for most suitable exposure of Transformers involved. Refer to Fig. II

TMC SPECIFICATION

NO. S 1150

REV:

A B

COMPILED: ASC

CHECKED:

APPD:

SHEET 4 OF 12

TITLE: KIT 247

NOTE: If KIT 206 is being performed, it will be advantageous to perform this step prior to positioning of Transformer (TF 325) into frame.

- a. Center Cover (Item 13) locate Terminals which coincide with 8 5/8 dim. of slots.
- b. Loosen hardware involved with 3/4" wrench, insert Bracket (Item 7) between Flat Washer and Terminal Board position per Fig. II, re-tighten hardware.
- c. Align mtg slots of cover (Item 13) over Bracket (Item 7), insert 2 Nylon Screws (Item 2) and 2 Fibre Washers (Item 18) and secure.

3. INSTALLATION OF CIRCUIT BREAKER COVERS (ITEM 14) REFER FIG. III.

- a. Locate mounting hardware of Breaker Mounting Plate, loosen same, insert Bracket (Item 8) per Fig. III, position cover (Item 14) so as to insure proper fit then re-tighten hardware.
- b. Fit cover (Item 14) over each end of Circuit Breaker, bring return edge of cover tangent to leads. Insert Nylon Screw (Item 3)
- c. Remove protective backing of Decals (Item 15) Position one each on covers (item 14)

4. INSTALLATION OF CONTACTOR COVERS (ITEMS 10,11 & 12) REFER FIG. IV.

- a. Locate each of the mounting studs of the contactors. Position 2 each spacers (Item 4) on extreme top studs, 2 each spacers (Item 4) on extreme bottom studs and next position 2 each spacers (Item 5) on left bottom of top contactor and right top of bottom contactor, Refer Fig. IV.
- b. Position cover (Item 10) on top portion of top contactor. Locate over spacers (Item 4) and secure with Nylon Screws (Item 3).

TMC SPECIFICATION

NO. S 1150

REV:

A B

COMPILED: ASC

CHECKED:

APPD:

SHEET 5 OF 12

TITLE: KIT 247

- c. Position cover (Item 11) on bottom portion of bottom contactor. Locate over spacers (Item 4) and secure with Nylon Screws (Item 3).
 - d. Position cover (Item 12) over Bus Bars between contactors. Locate over spacers (Item 5) and secure with Nylon Screws (Item 3).
5. INSTALLATION OF DROPPING RESISTORS COVER (ITEM 14) FIG. V.
 - a. Locate 1/4-20 Binder Head Screw mounting the middle Resistor; left hand side, remove *with* Screw Driver.
 - b. Secure 7/8 long 1/4-20 stud (Item 17). Insert into 1/4-20 end of spacer (Item 6); then screw same into screw hole left by step 5a; secure tightly.
 - c. Position cover (Item 14) over Resistors, locate over spacer (Item 6) and secure with Nylon Screw (Item 3).
6. REMOVE PROTECTIVE BACKING OF NAME PLATE NP-362 (ITEM 16) and attach to Transmitter as guidance of completed modification.
7. Reassemble Transmitter to mechanical operational status.

TMC SPECIFICATION

NO. S 1150

REV:

A B

COMPILED:

ASC

CHECKED:

APPD:

SHEET 6

OF 12

TITLE:

KIT 247

PARTS PECULIAR

NOTE 1. When it is established that equipment being modified is of the 230V and 480 Volt separate feed or is to be modified to 230V and 480 Volt separate feed per KIT 206: Use portion of KIT 206 as relates to installation and completion of all items not covered by KIT 247.

TMC SPECIFICATION

NO. S 1150

REV: A/B

COMPILED:

CHECKED:

APPD:

SHEET 7 OF 12

TITLE:

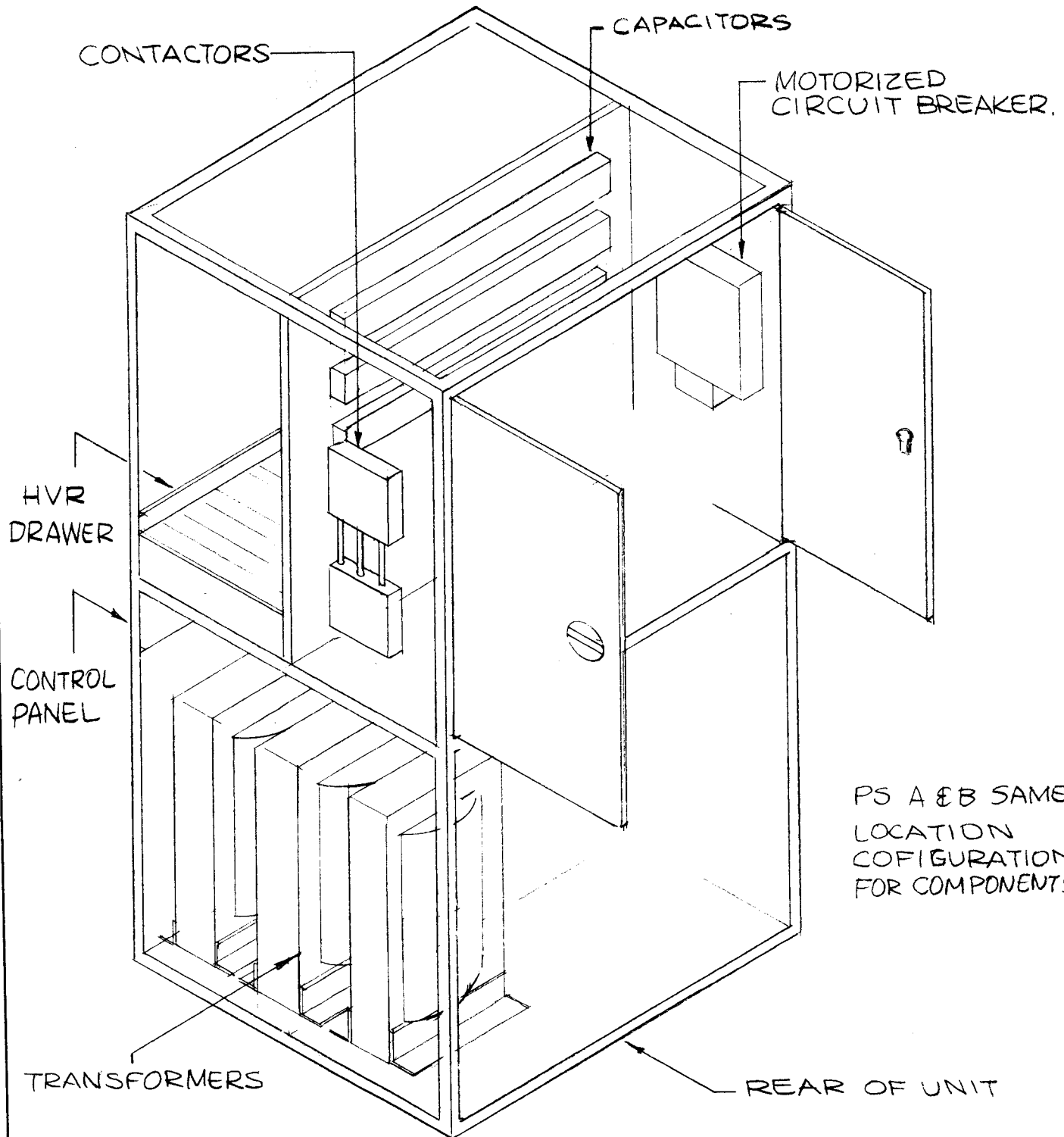


FIG-1
LOCATION OF COMPONENTS

DATE _____
SHEET 8 OF 12

TMC SPECIFICATION NO. S 1150

B

COMPILED

CHECKED

TITLE:

APPROVED

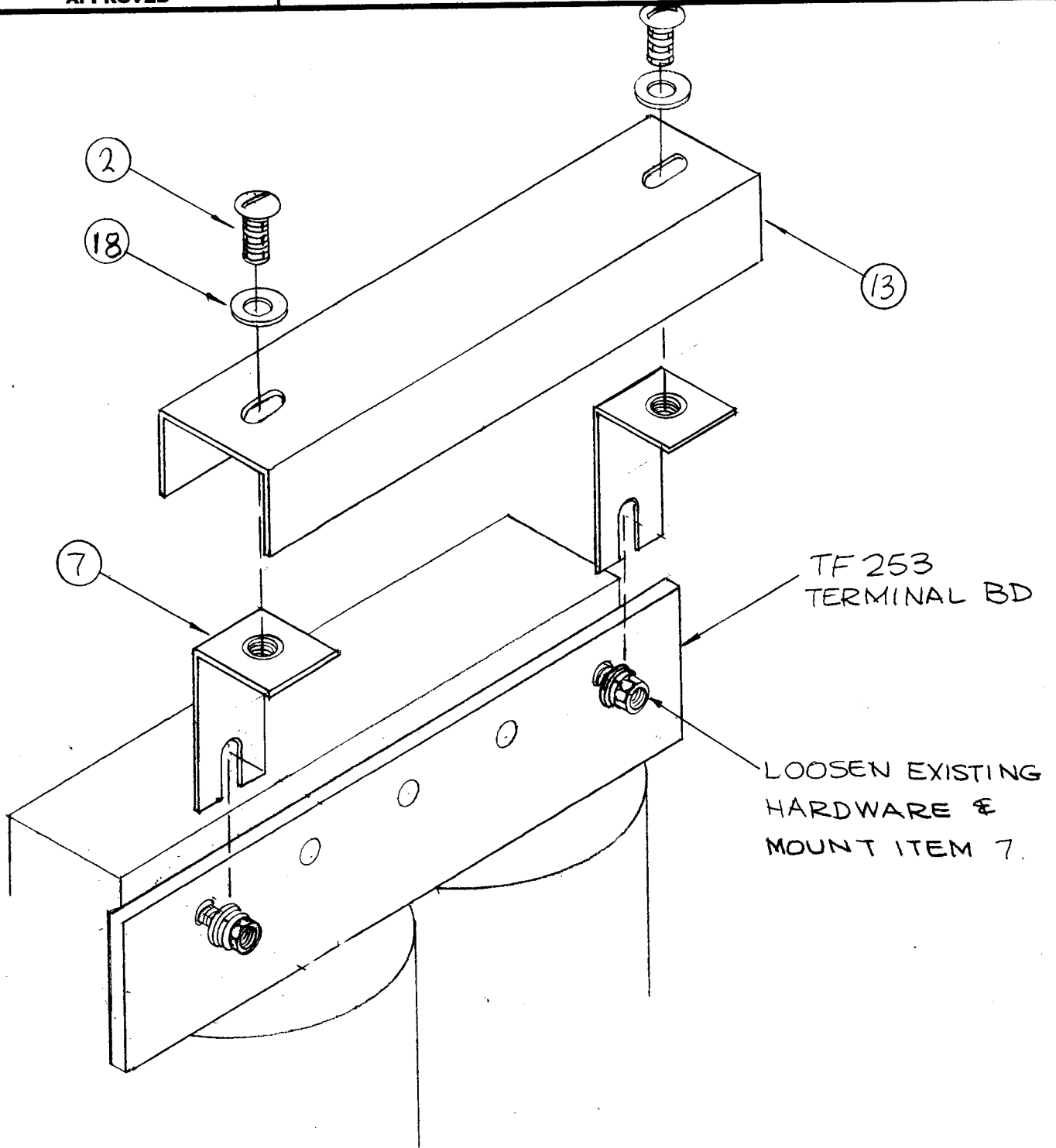


FIG-2

TMC SPECIFICATION

NO. S 1150

REV: A B

COMPILED:

CHECKED:

APPD:

SHEET 9 OF 12

TITLE:

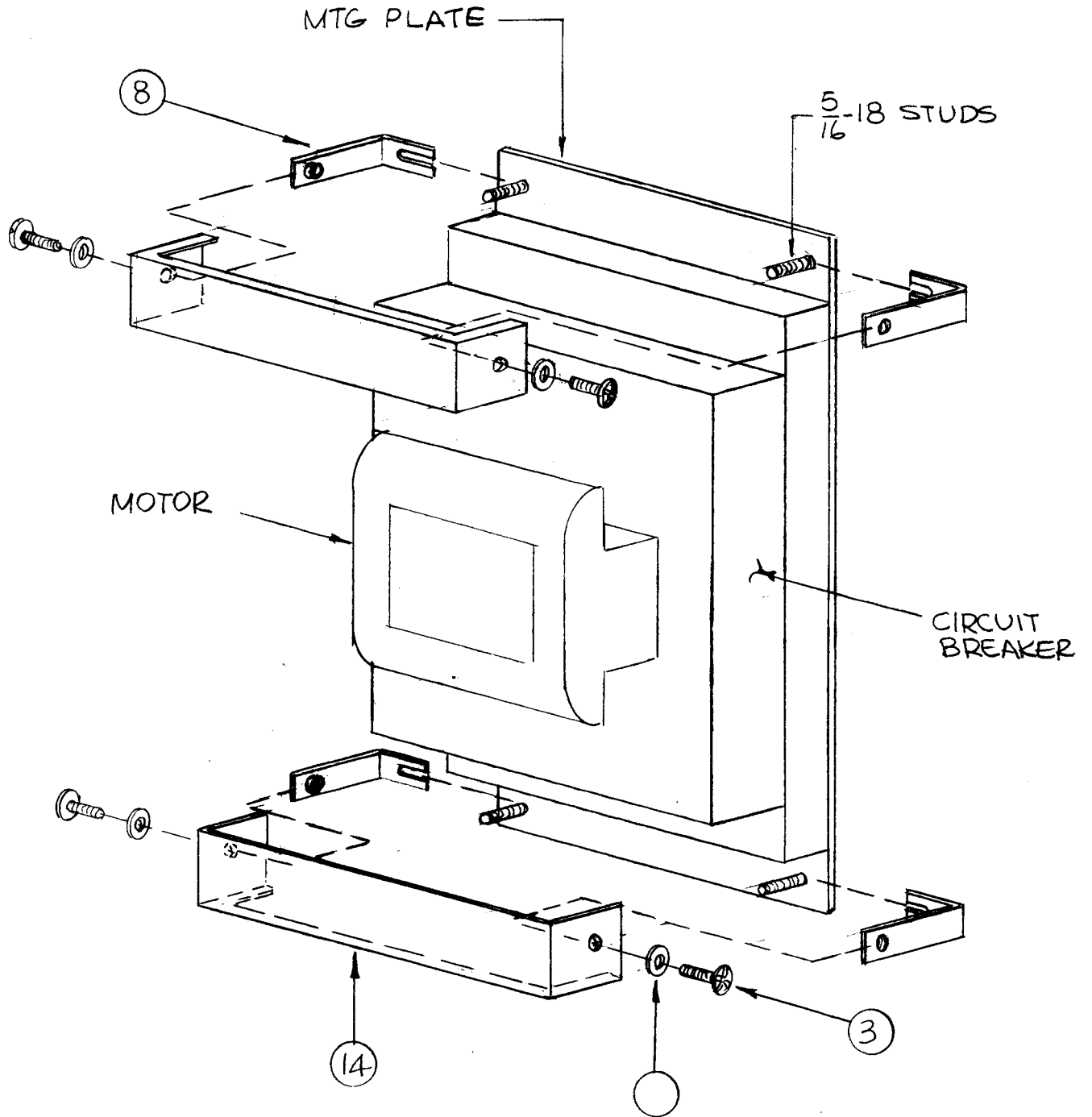


FIG - 3

TMC SPECIFICATION

NO. S 1150

REV: AB

COMPILED:

CHECKED:

APPD:

SHEET 10 OF 12

TITLE:

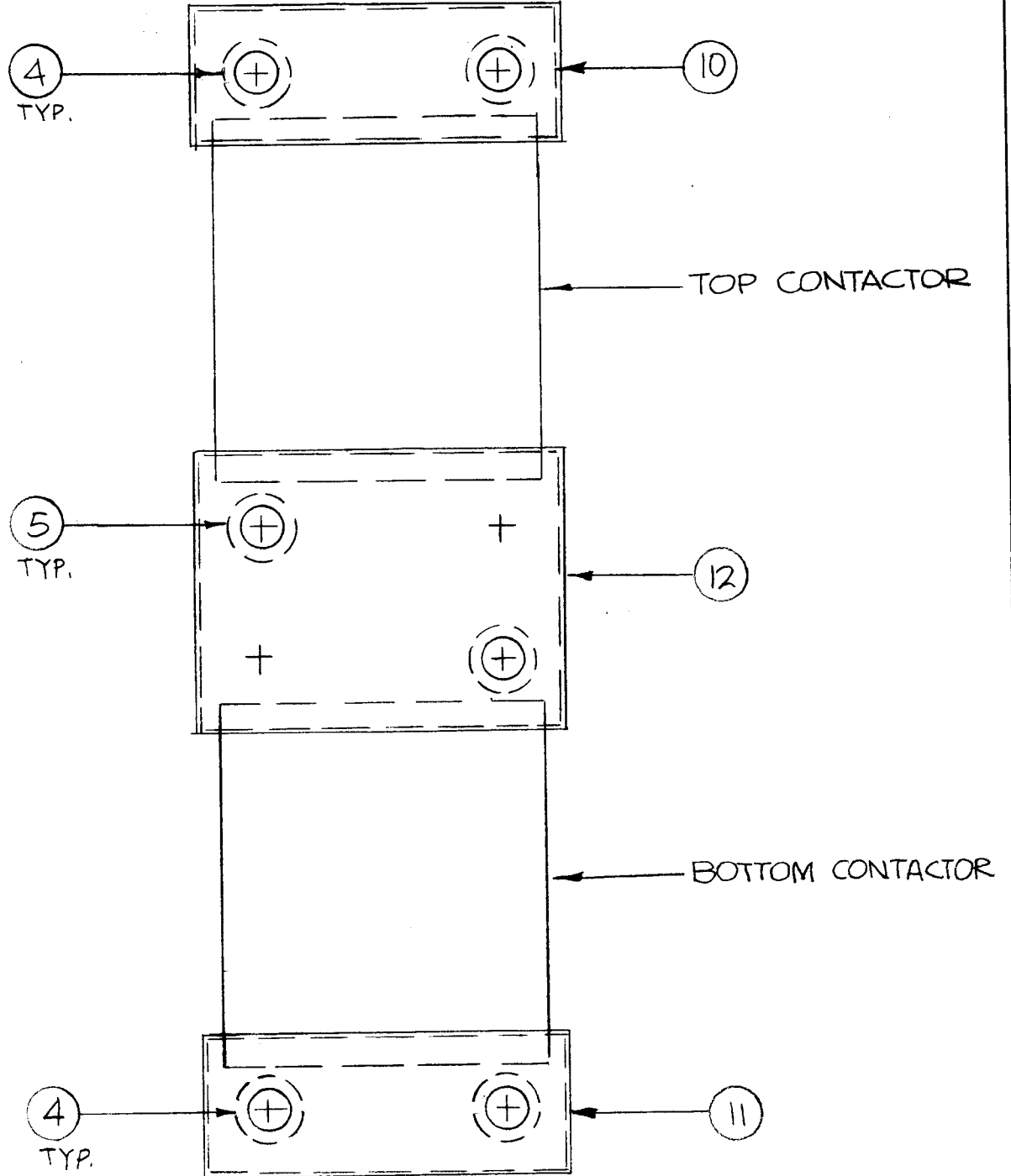


FIG-5

TMC SPECIFICATION

NO. S 1150

REV: AB

COMPILED:

CHECKED:

APPD:

SHEET // OF 12

TITLE:

FIN RESISTORS

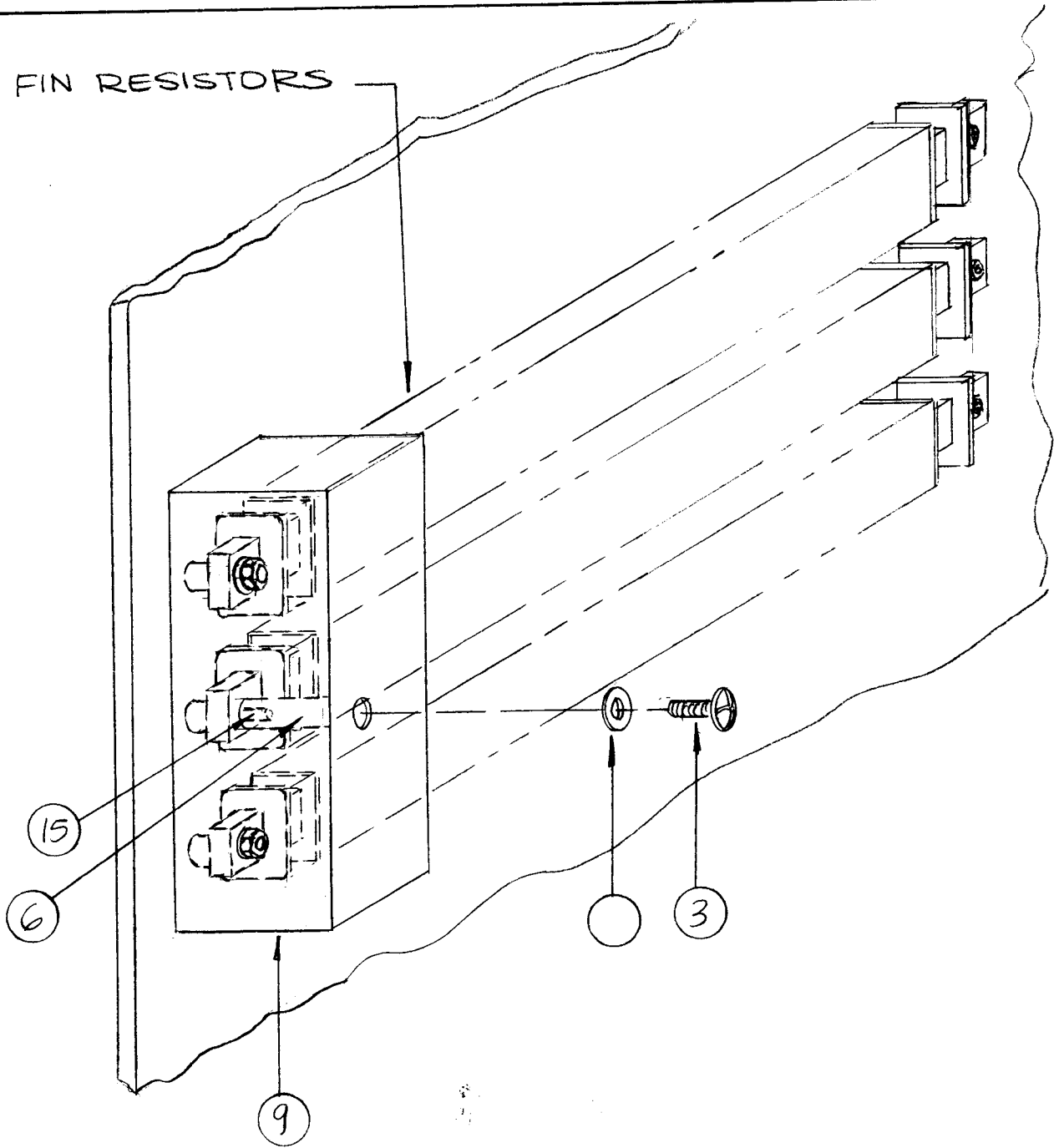


FIG-5

