

TMC SPECIFICATION

NO. S 944

REV: ~~0~~ A B

COMPILED:

CHECKED:

APPD:

SHEET 1 OF 2

TITLE: KIT-123 GPT-40K Emergency 1 KW Output

I. EQUIPMENT AFFECTED:

A. GPT-40K (AN/FRT-40/-40A), Transmitter Set, Radio

II. PURPOSE:

A. To provide 1 kw emergency output from GPT-40K transmitter.

III. MATERIALS SUPPLIED IN THE KIT:

Items	Qty.	Part no.	Description
1.	1	CA-582-1	Cable Ass'y RF
2.	1	UG-1019/U	Adapter
3.	1	LD-1385	Plastic Plaque
4.	1	TP113R0-3/4	3/4" Dia Greenlee Punch
5.	1		3/8" drill bit
6.	1	NP-362-41	Nameplate

IV. TOOLS REQUIRED: (TO BE PROVIDED BY INSTALLING ACTIVITY)

1. Screwdriver 6" Phillips
2. Screwdriver 6" flat head
3. Two wrenches adjustable 12"
4. Power drill 3/8" chuck

V. PROCEDURE:

1. Remove all power to GPT-40K.
2. Remove back shield from 10K Main Frame.
3. Short to ground all H.V. points.
4. Remove front windows from 10K main frame and 40K PA frame.
5. Ref Fig-1, Mark, Center Punch, drill (item 5) and enlarge hole with greenlee (item 4) as shown.
6. Ref fig-2, install UG-1019/U) as shown.
7. Ref LD-1385 (item 3) for the following instructions.
 - a. Remove CA-412-3-13-00 strap.
 - b. Transfer P1009 from J901 (base of P.A. tube) to bottom of CP-900. (UG-1010/U).
 - c. Connect CA-582-1 (item 1) to top side of CP-900 inside main frame.
 - d. Connect the CA-582-1 end with terminal lugs to J905.

VI. Ref schematic 40K P.A. compartment.

- Unbalanced operation - Link 1 connect strap A. only.
- Link 2 connect strap C. only.

TMC SPECIFICATION

NO. S 944

REV:

PAB

COMPILED:

CHECKED:

APPD:

SHEET

2

OF

2

TITLE:

KIT-123 GPT-40K Emergency 1 KW Output

Balanced operation - Link 1 connect strap C. only.
- Link 2 connect strap A. only.

- VII. Check that all connections are secure.
- VIII. Using air pressure hose or vacuum cleaner, clean equipment.
Ensuring all drilling residue is removed.
- IX. Affix plaque (item 3) inside 10K main frame adjacent to CP-900.
- X. Replace back shield on 10K main frame and front windows on 10K
main frame and 40K P. A. frame.
- XI. This completes modification.
- XII. Affix item 6 on relay panel cover along side of existing nameplate.

TMC SPECIFICATION

NO. S 44

REV: ~~A~~

COMPILED:

CHECKED:

APPD:

SHEET

OF

TITLE: KIT-123 GPT-40K EMERGENCY 1-KW OUTPUT

TOP FRONT OF PA CHASSIS

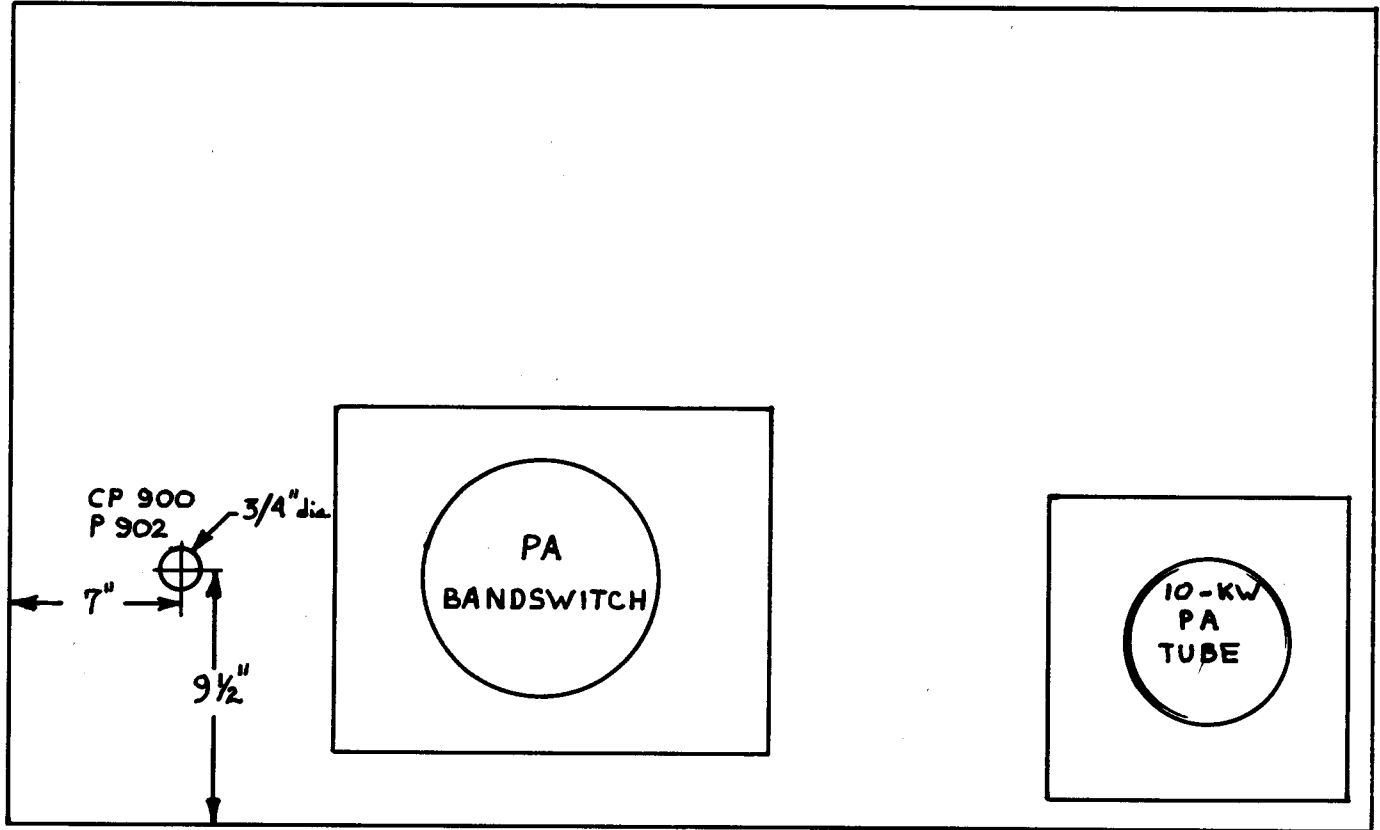


FIGURE 1. MAIN FRAME PA CHASSIS, TOP VIEW

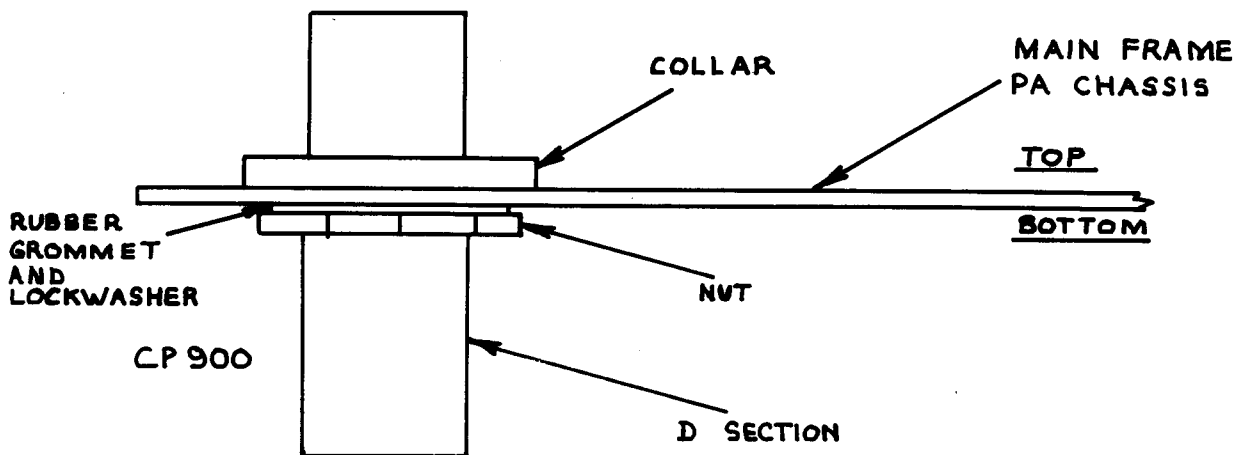



FIGURE 2. MAIN FRAME PA CHASSIS, SIDE VIEW

DATE <u>2/16/65</u>		TMC SPECIFICATION NO. S 944	B
SHEET _____ OF _____			
T. W. COMPILED	CHECKED	TITLE: KIT-123 GPT-40K EMERGENCY 1KW OUTPUT	
 APPROVED			

KIT-123
GPT-40K EMERGENCY 1KW OUTPUT