

S 1313

REV:  A

COMPILED: SR      CHECKED:      APPD:      SHEET 1 OF 7

TITLE:

1/22/73

KIT 346-1A

PEAK READING WATT METER

REV:

COMPILED:

CHECKED:

APPD:

SHEET 2 OF 7

TITLE:

## A. Purpose:

1. Provides peak reading wattmeter

## B. Materials supplied:

<u>Item</u>	<u>Qty.</u>	<u>Description</u>
1	1	AX5208 Amplifier Assembly
2	1	MS-6415 Cover Plate
3	1	CA-1736 Cable
4	1	ST-12A Switch
5	1	TE-129 Ground Lug
6	4	SCBP0832BN10 Screw
7	4	NTH0832BN10 Nut
8	4	LWS08MRN Lock Washer
9	1	4 inch MWC22(7)UO
10	1	LD2536 Switch, Plate
11	10	CU-142-11 Tie Wrap
12	1	CU102-5N Clamp
13	1	LD-2537 Meter Face
14	1	CK-1969 Schematic

## C. Tools Required:

1. Soldering Iron
2. Medium Phillips Screwdriver
3. Pliers, Diagonal Cutting
4. Pliers, Long Nose
5. Flat Blade Screwdriver
6. 15/32 Inch Drill Bit
7. 13/64 Inch Drill Bit

## D. Test Procedure

1. Turn OFF all AC Power to Transmitter.
2. Remove left and right front trim strips from 40K PA Frame.
3. Remove all (5) Mounting Screws from 40K Meter Panel, lower Panel away from Frame.
4. Using Item 2 (MS6415) as a template, locate and drill (4) 13/64 holes in upper left hand side of meter box, Refer Fig. 1.

REV:

COMPILED:

CHECKED:

APPD:

SHEET 3

OF 7

TITLE:

5. Place Item (2) cover plate over open side of (Amp Chassis), then mount chassis to upper left rear of meter box, using Items 6,7,8. Note: mount chassis with connectors facing down. Also omit items 6,7,8 from upper right mounting hole.
6. Remove (MR 147 40KW output meter) from meter panel. Carefully remove front of meter case. Replace meter face with (Item 13 meter face). Replace meter cover.
7. Reinstall meter in Meter Panel.
8. Locate and drill a 15/32 hole 1 1/8 inch to the right side and in line with S-7403 PA Light Switch located on right side of control panel.  
Note: Hole should be located 1 1/8 inch from the center of PA light switch.
9. Place Item 5 (ground lug) over threaded end of Item 4 (switch). Install switch in hole drilled in Step 8, with On side up. Place Item 10 (switch plate) over threaded end, Peak end Up. Install mounting nut. Refer Fig. 2.
10. Remove Coax Cable between output coupler and J7201, and discard.
11. Connect connector end of cable to Amplifier Chassis. Place Item 12 (clamp) on cable and with Items 6, 7, 8 mount to open mounting hole on Amp Chassis. Refer Fig. 3,
12. Dress cable as shown in Fig. 3, using Tie Wraps, (Item 11).
13. Connect cable marked J7201 to J7201.
14. Connect cable marked Fwd to Fwd port on output coupler.
15. Connect leads marked 7 and 8 to Terminals 7 and 8 on E-7303, located on right front frame channel.
16. Connect Red Lead to bottom of lug of switch installed in Step 9. Connect Black Lead to ground lug.
17. Using Item 9 (Black wire) connect lead from top terminal of switch installed in Step 9, to ground lug.

REV:

COMPILED:

CHECKED:

APPD:

SHEET 4 OF 7

TITLE:

18. Using a suitable cutting tool, modify both right and left trim strips, removed in Step (2). Refer Fig. 4.
19. Install both trim strips on transmitter. Note: Care must be taken not to cut cable coming out of side of meter box when installing strips.
20. This completes installation of KIT-346-1A.
21. Calibration Check:
  - A. Place 2 Test Tones in upper side band.
  - B. Place Peak-Average switch in average position.
  - C. Set Transmitter frequency to 6MC, tune Transmitter into a Dummy Load. Adjust output power to **16.2KW** on average scale.
  - D. Place Peak-Average switch in Peak Position. Output meter should indicate approximately 40KW on Peak Scale. If there is more than  $\pm 2.5KW$  deviation, adjust meter adjust control R1 on Amplifier Chassis until meter indicates 40KW. Note: Care must be taken when making the above adjustment because of the High Voltage present in the P.A. compartment.

# TMC SPECIFICATION

NO. S 1313

REV:

COMPILED:

CHECKED:

APPD:

SHEET 5

OF 7

TITLE:

FIRST VIEW OF PART 1

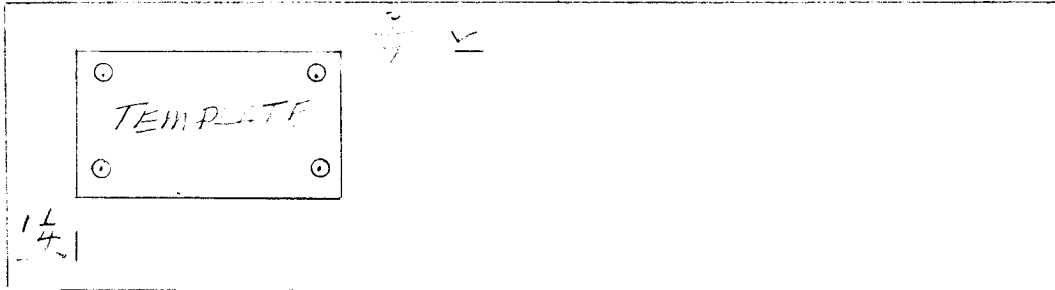


FIG. 1

REAR VIEW

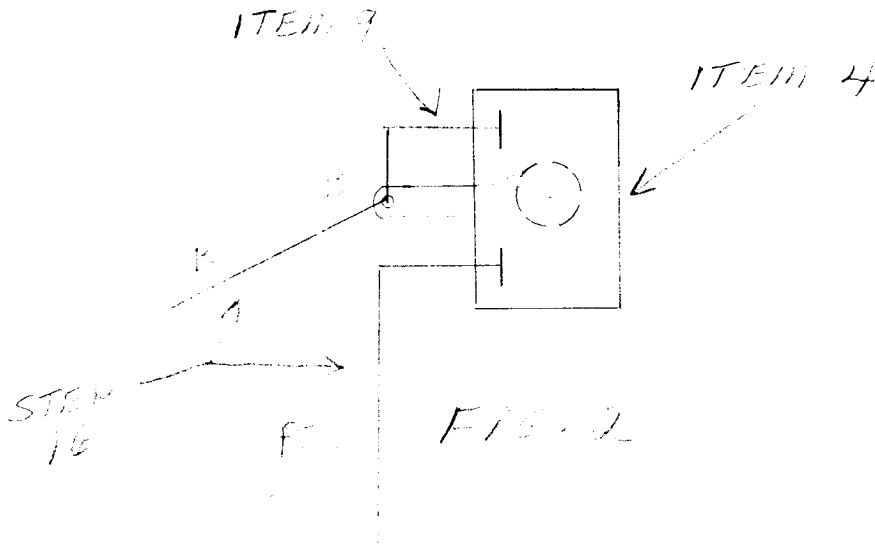


FIG. 2

# TMC SPECIFICATION

No. S 1313

REV:

COMPILED:

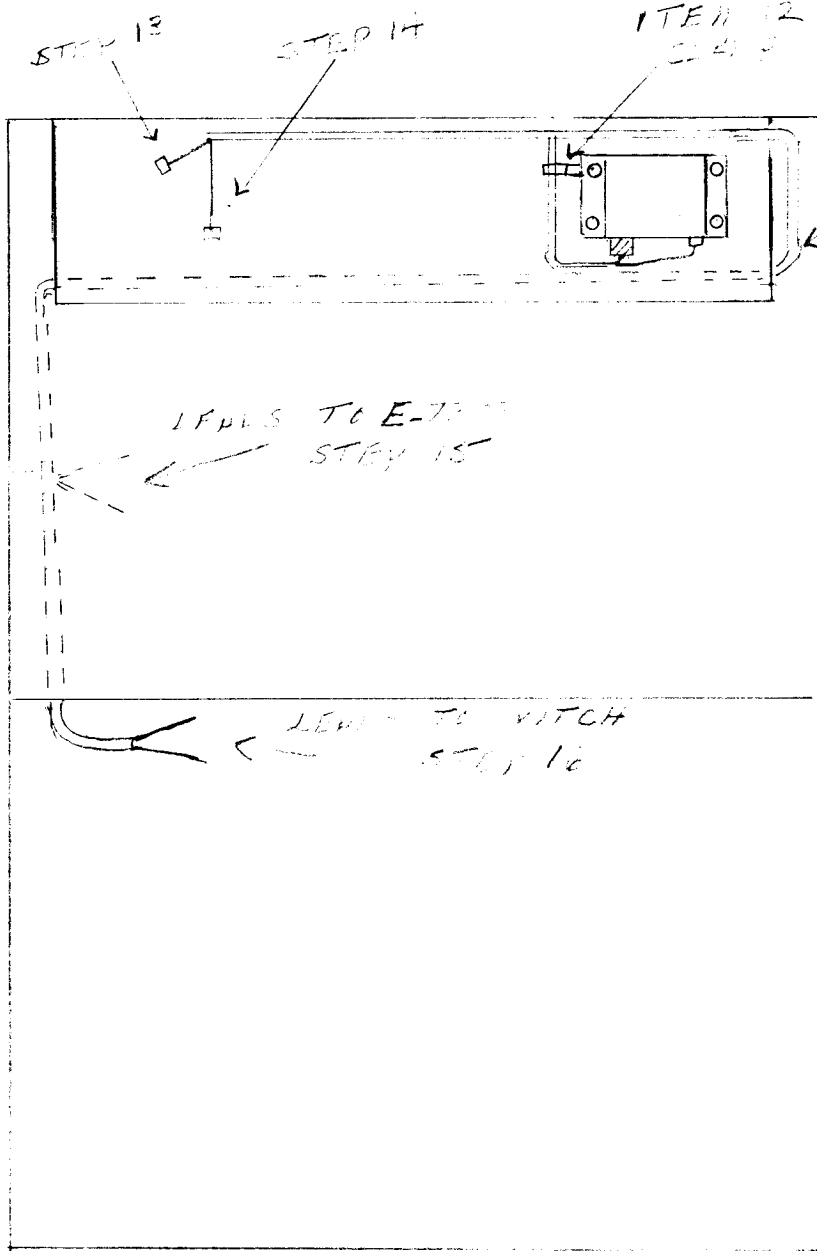
CHECKED:

APPD:

SHEET 6 OF 7

TITLE:

REAR VIEW INSIDE P.A.



DISCONTINUED  
-  
OF

FIG. 3



