

S-193

Instructions to Install Threshold Control Knob

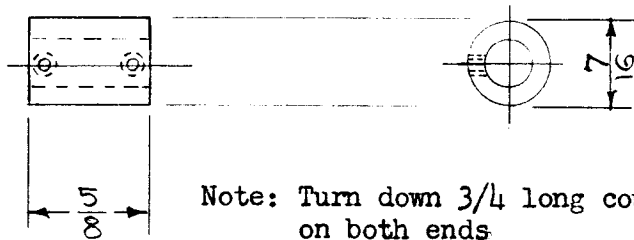
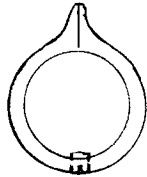
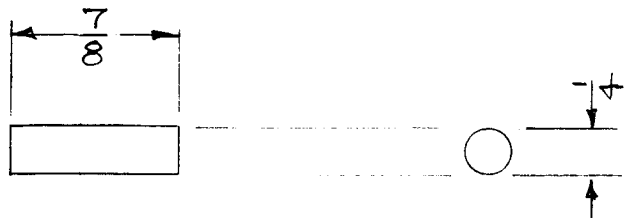
1. Remove "U" type bracket which supports Threshold Control by loosening the four mounting nuts.
2. Install the coupling and phenolic shaft to the Threshold Control.
3. Replace bracket.
4. Attach knob to phenolic shaft.

This change is optional in all Model CFA's beginning with Serial # 163.

Bill of Material

1/4 dia. x 7/8 long phenolic rod	1 ea.
Harry Davies black knob #1400 with pointer; 11/16 dia x 13/32 height; 8-32 set screw.	1 ea.
Brass cadmium plate, 1/4 to 1/4 coupling; with two 6-32 set screws; 7/16 dia x 5/8 long.	1 ea.

DATE 4/17/52	Instructions to Install Thr shold Control Knob. Beginning with Serial # 163  Model CFA Frequency Shift Converter	THE TECHNICAL MATERIEL CORPORATION MAMARONECK, NEW YORK	
DRN.			
CHKD. <i>PJB</i>		SHEET 1 OF 2	NO. S-193
APPD. <i>PJB</i>		1/25/54 WAS AEM090	



Note: Turn down  $3/4$  long coupling on both ends

Bill Of Material

$1/4$ dia. x $7/8$ long phenolic rod.	1 ea.
Harry Davies black knob #1400 with pointer; $11/16$ dia. x $13/32$ height, with 8-32 set screw.	1 ea.
Brass cadmium plate, $1/4$ to $1/4$ coupling; with two 6-32 set screws; $7/16$ dia. x $5/8$ long.	1 ea.

DATE 4/17/52	Threshold Control Knob Kit Beginning with Serial # 163  Model CFA Frequency Shift Converter	THE TECHNICAL MATERIEL CORPORATION MAMARONECK, NEW YORK	
DRN. P.B.			
CHKD. P.B.		SHEET 2 OF 2	NO. S-193
APPD. P.B.		1/25/54	WAS AMS357