

IF IT IS FOUND DESIRABLE TO CHANGE ANY TOLERANCE OR OTHER DETAIL SPECIFIED ON THIS DRAWING NOTIFY THE PURCHASER PROMPTLY.

RY-100

MAXIMUM ALLOWABLE TOLERANCES HAVE BEEN DETERMINED AND DEVIATIONS WILL BE CAUSE FOR REJECTION. REMOVE ALL BURRS AND SHARP EDGES

TWR-115

USED ON

MODEL

PROJECT NO.

ASS'Y. NO.

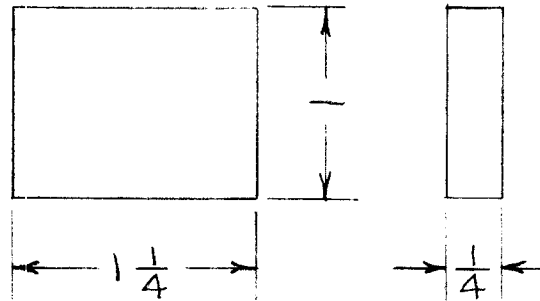
DATE

NOTICE TO PERSONS RECEIVING THIS DRAWING

THE TECHNICAL MATERIEL CORPORATION claims proprietary right in the material disclosed hereon. This drawing is issued in confidence for engineering information only and may not be reproduced or used to manufacture anything shown hereon without permission from THE TECHNICAL MATERIEL CORPORATION to the user. This drawing is loaned for mutual assistance and is subject to recall at any time.

Property of:

THE TECHNICAL MATERIEL CORPORATION
MAMARONECK, NEW YORK



| REQ. | ITEM | PART NO. | DESCRIPTION | SYMBOL |
|------|------|-----------------------------|--|---------------------------------|
| | | 1/4 THK | TMC (Canada) LIMITED OTTAWA ONTARIO | |
| | | STOCK SIZE | | |
| | | NEOPRENE | SNUBBER | |
| | | MATERIAL | WEIGHT PER PC. | |
| | | DUROMETER HARDNESS 50-60 | TAPE WINDING | |
| | | TYPE & TEMPER | J.W.T. 10-5-55 | |
| | | | DRAWN | ELEC. DES. APP. MECH. DES. APP. |
| | | HEAT TREAT. SPEC. | | Law |
| | | FINISH & SPEC. NO. | CHECKED | FINAL APPROVAL |
| | | | | RY-100 |

| ISSUE | ITEM | CHANGED FROM | DATE | CN. NO. | DRAFTS | CHECKER | ENG. APP. |
|------------|-------------|-------------------|----------------|---|--------|---------|-----------|
| TOLERANCES | | | | SCALE FULL SIZE | | | |
| ALL OTHERS | DEC. DIM. ± | FRAC. DIM. ± 1/64 | ANGULAR DIM. ± | DRILL, PUNCH, COMMERCIAL STOCK SIZES AND MANUFACTURERS TOLERANCES ARE NOT INCLUDED. | | | |

IF IT IS FOUND DESIRABLE TO CHANGE ANY TOLERANCE OR OTHER DETAIL SPECIFIED ON THIS DRAWING NOTIFY THE PURCHASER PROMPTLY.

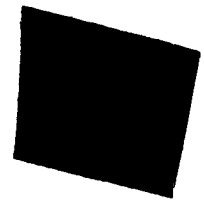
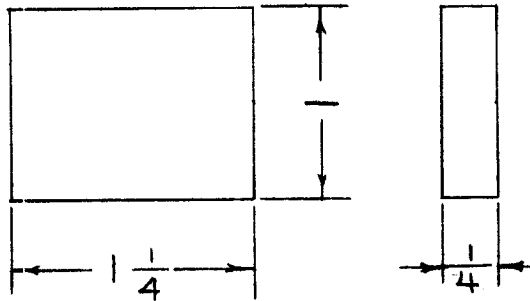
RELEASED

RY-100

MAXIMUM ALLOWABLE TOLERANCES HAVE BEEN DETERMINED AND DEVIATIONS WILL BE CAUSE FOR REJECTION. REMOVE ALL BURRS AND SHARP EDGES

USED ON

| MODEL | PROJECT NO. | ASS'Y. NO. | DATE |
|---------|-------------|------------|---------|
| TWR-115 | 151 | A-216 | 9-25-52 |



| REQ. | ITEM | PART NO. | DESCRIPTION | SYMBOL |
|------|------|-----------------------------|--|-----------------|
| | | 1/4 THK. | THE TECHNICAL MATERIEL CORP. MAMARONECK, NEW YORK | |
| | | STOCK SIZE | | |
| | | NEOPRENE | SNUBBER | |
| | | MATERIAL | | |
| | | WEIGHT PER PC. | | |
| | | DUROMETER HARDNESS 50-60 | | |
| | | TYPE & TEMPER | | |
| | | | DRAWN | ELEC. DES. APP. |
| | | | CHECKED | MECH. DES. APP. |
| | | HEAT TREAT. SPEC. | FINAL APPROVAL | |
| | | | | |
| | | FINISH & SPEC. NO. | | |

| ISSUE | ITEM | CHANGED FROM | DATE | CN. NO. | DRAFTS | CHECKER | ENG. APP. |
|-------|------|--------------|------|---------|--------|---------|-----------|
| | | | | | | | |

TOLERANCES

SCALE FULL SIZE

ALL OTHERS
DEC. DIM. ±
FRAC. DIM. ± 1/64
AN ULAR DIM. ±

DRILL, PUNCH, COMMERCIAL STOCK
SIZES AND MANUFACTURERS
TOLERANCES ARE NOT INCLUDED.

RY-100

IF IT IS FOUND DESIRABLE TO CHANGE ANY TOLERANCE OR OTHER DETAIL SPECIFIED ON THIS DRAWING NOTIFY THE PURCHASER PROMPTLY.

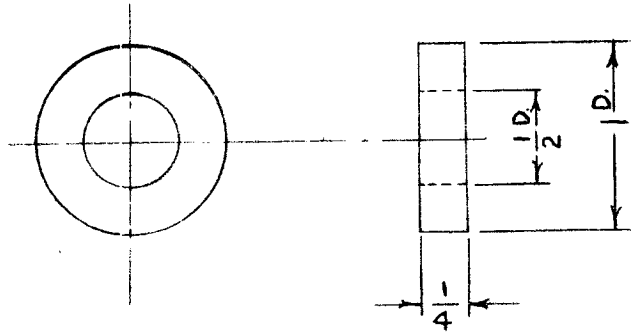
RELEASED

RY-101

MAXIMUM ALLOWABLE TOLERANCES HAVE BEEN DETERMINED AND DEVIATIONS WILL BE CAUSE FOR REJECTION. REMOVE ALL BURRS AND SHARP EDGES

USED ON

| MODEL | PROJECT NO. | ASS'Y. NO. | DATE |
|---------|-------------|------------|---------|
| TWR-115 | 151 | A-219 | 9-11-52 |
| TWR-115 | 151 | A-218 | 9-11-52 |



| REQ. | ITEM | PART NO. | DESCRIPTION | SYMBOL |
|------|------|--------------------|------------------------------|--------|
| | | 1 DIA. | THE TECHNICAL MATERIEL CORP. | |
| | | STOCK SIZE | MAMARONECK, NEW YORK | |
| | | NEOPRENE | ELASTIC INSERT | |
| | | MATERIAL | | |
| | | WEIGHT PER PC. | | |
| | | DURUMETER HARDNESS | | |
| | | 45-50 | | |
| | | TYPE & TEMPER | | |
| | | | | |
| | | HEAT TREAT. SPEC. | | |
| | | | | |
| | | FINISH & SPEC. NO. | | |

| ISSUE | ITEM | CHANGED FROM | DATE | CN. NO. | DRAFTS | CHECKER | ENG. APP. |
|-------|------|--------------|------|---------|--------|---------|-----------|
| | | | | | | | |

TOLERANCES

SCALE FULL SIZE

ALL OTHERS
 DEC. DIM. $\pm \frac{1}{64}$
 FRAC. DIM. $\pm \frac{1}{64}$
 ANGULAR DIM. \pm

DRILL, PUNCH, COMMERCIAL STOCK SIZES AND MANUFACTURERS TOLERANCES ARE NOT INCLUDED.

A. J. J. J.
 DRAWN
 ELEC. DES. APP.
 MECH. DES. APP.
 11/14/52
 CHECKED
 FINAL APPROVAL

RY-101

IF IT IS FOUND DESIRABLE TO CHANGE ANY TOLERANCE OR OTHER DETAIL SPECIFIED ON THIS DRAWING NOTIFY THE PURCHASER PROMPTLY.

RY-101

MAXIMUM ALLOWABLE TOLERANCES HAVE BEEN DETERMINED AND DEVIATIONS WILL BE CAUSE FOR REJECTION. REMOVE ALL BURRS AND SHARP EDGES

TWR-116

USED ON

MODEL

PROJECT NO.

ASS'Y. NO.

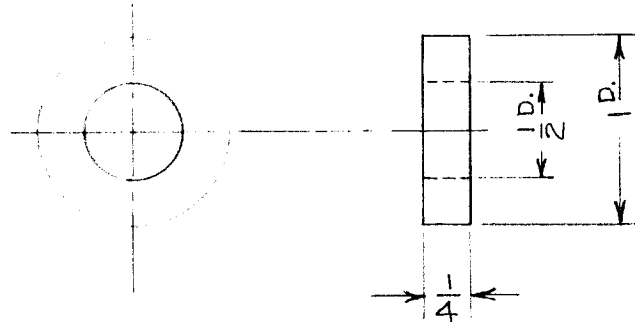
DATE

NOTICE TO PERSONS RECEIVING THIS DRAWING

THE TECHNICAL MATERIEL CORPORATION claims proprietary right in the material disclosed hereon. This drawing is issued in confidence for engineering information only and may not be reproduced or used to manufacture anything shown hereon without permission from THE TECHNICAL MATERIEL CORPORATION to the user. This drawing is loaned for mutual assistance and is subject to recall at any time.

Property of:

THE TECHNICAL MATERIEL CORPORATION
MAMARONECK, NEW YORK



| REQ. | ITEM | PART NO. | DESCRIPTION | SYMBOL |
|------|------|--------------------|---|-----------------|
| | | 1 DIA. | TMC (Canada) LIMITED OTTAWA ONTARIO | |
| | | STOCK SIZE | | |
| | | NEOPRENE | ELASTIC INSERT | |
| | | MATERIAL | TAPE WINDING | |
| | | WEIGHT PER PC. | J.W.T. 10-5-55 | |
| | | DUROMETER HARDNESS | DRAWN | ELEC. DES. APP. |
| | | 45-50 | | MECH. DES. APP. |
| | | TYPE & TEMPER | | |
| | | | | |
| | | HEAT TREAT. SPEC. | | |
| | | | | |
| | | FINISH & SPEC. NO. | | |
| | | | | |

| ISSUE | ITEM | CHANGED FROM | DATE | CN. NO. | DRAFTS | CHECKER | ENG. APP. |
|------------|---|--------------|---|-----------------|--------|---------|-----------|
| TOLERANCES | | | | SCALE FULL SIZE | | | |
| ALL OTHERS | DEC. DIM. $\pm \frac{1}{64}$ FRAC. DIM. $\pm \frac{1}{64}$ ANGULAR DIM. \pm | | DRILL, PUNCH, COMMERCIAL STOCK SIZES AND MANUFACTURERS TOLERANCES ARE NOT INCLUDED. | | | | |

IF IT IS FOUND DESIRABLE TO CHANGE ANY TOLERANCE OR OTHER DETAIL SPECIFIED ON THIS DRAWING NOTIFY THE PURCHASER PROMPTLY.

RY-104

MAXIMUM ALLOWABLE TOLERANCES HAVE BEEN DETERMINED AND DEVIATIONS WILL BE CAUSE FOR REJECTION. REMOVE ALL BURRS AND SHARP EDGES

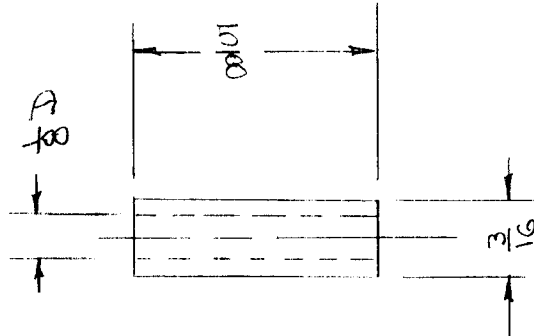
USED ON

MODEL

PROJECT NO.

ASS'Y. NO.

DATE



Note:

1/8 I.D x 1/32 WALL x 5/8 LONG
TYPE 50
DURO BUNA S

Ref: STOCKWELL RUBBER CO.

| REQ. | ITEM | PART NO. | DESCRIPTION | SYMBOL |
|------|------|----------|--|-----------------|
| | | | THE TECHNICAL MATERIEL CORP. MAMARONECK. NEW YORK | |
| | | | INSULATION | |
| | | | SLEEVING | |
| | | | MAR 6/29 | |
| | | | DRAWN | ELEC. DES. APP. |
| | | | WDE | MECH. DES. APP. |
| | | | CHECKED | FINAL APPROVAL |
| | | | | RY-104 |

ISSUE ITEM CHANGED FROM DATE CN. NO. DRAFTS CHECKER ENG. APP.

TOLERANCES

SCALE

ALL OTHERS

DEC. DIM. ±
FRAC. DIM. ±
ANGULAR DIM. ±

DRILL, PUNCH, COMMERCIAL STOCK SIZES AND MANUFACTURERS TOLERANCES ARE NOT INCLUDED.

FINISH & SPEC. NO.

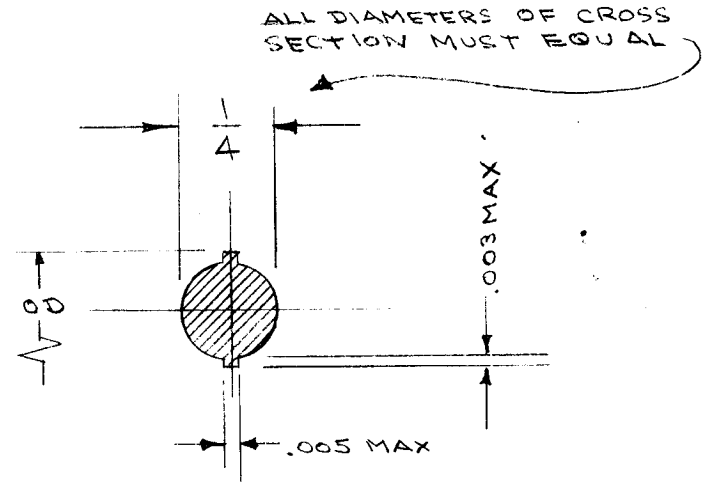
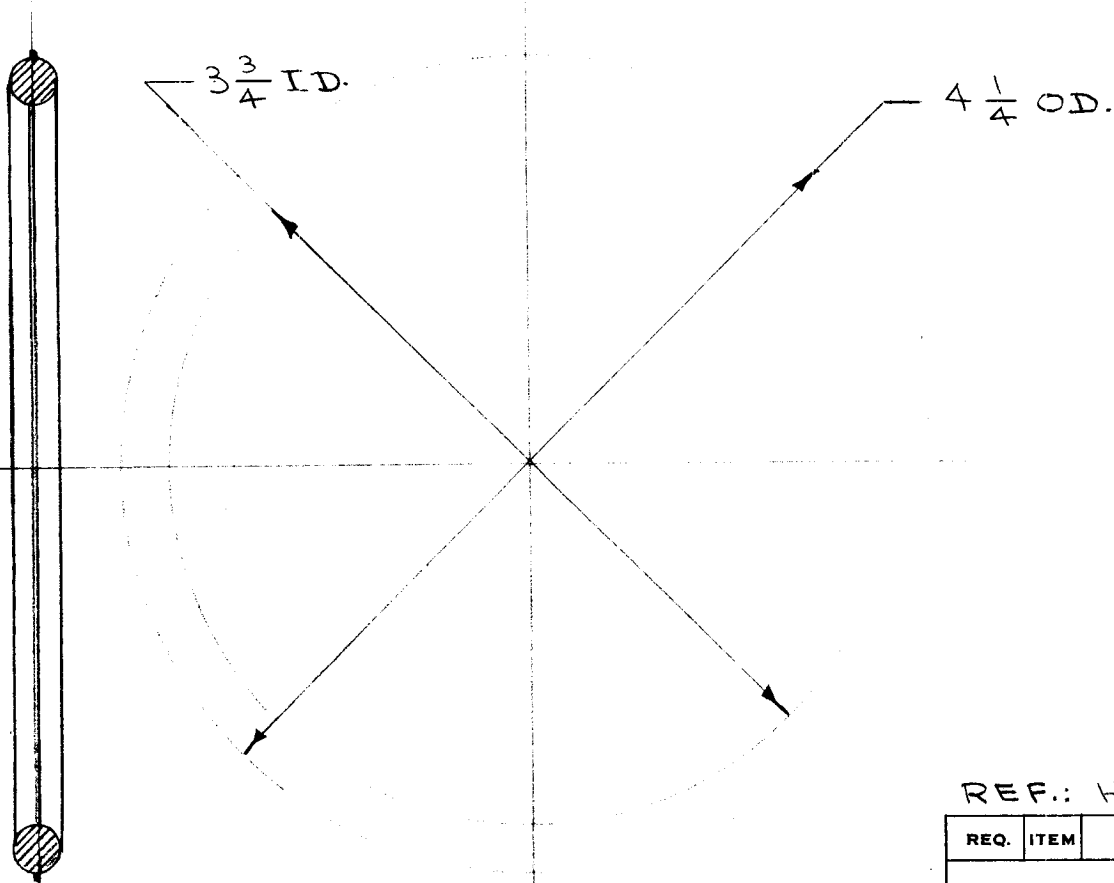
IF IT IS FOUND DESIRABLE TO CHANGE ANY TOLERANCE OR OTHER DETAIL SPECIFIED ON THIS DRAWING NOTIFY THE PURCHASER PROMPTLY.

RY-105

MAXIMUM ALLOWABLE TOLERANCES HAVE BEEN DETERMINED AND DEVIATIONS WILL BE CAUSE FOR REJECTION. REMOVE ALL BURRS AND SHARP EDGES

USED ON

| MODEL | PROJECT NO. | ASS'Y. NO. | DATE |
|-------|-------------|------------|---------|
| VOX | 101 | A-586 | 4-22-53 |



REF.: HOOVER # 541

| REQ. | ITEM | PART NO. | DESCRIPTION | SYMBOL |
|------|--------|--------------------|--|-----------------|
| | # | | THE TECHNICAL MATERIEL CORP. MAMARONECK. NEW YORK | |
| | | STOCK SIZE | | |
| | RUBBER | # | RING, "O" TYPE | |
| | | MATERIAL | WEIGHT PER PC. | |
| | | # | | |
| | | TYPE & TEMPER | C.D.D. 4-22-53 | AJJ |
| | | | DRAWN | ELEC. DES. APP. |
| | | | AD 4-22-53 | AJJ |
| | | HEAT TREAT. SPEC. | CHECKED | FINAL APPROVAL |
| | | # | | |
| | | FINISH & SPEC. NO. | | RY-105 |

| ISSUE | ITEM | CHANGED FROM | DATE | CN. NO. | DRAFTS | CHECKER | ENG. APP. |
|-------|------|--------------|------|---------|--------|---------|-----------|
| | | | | | | | |

TOLERANCES

SCALE

DRILL, PUNCH, COMMERCIAL STOCK SIZES AND MANUFACTURERS TOLERANCES ARE NOT INCLUDED.

ALL OTHERS
DEC. DIM. ±
FRAC. DIM. ±
ANGULAR DIM. ±

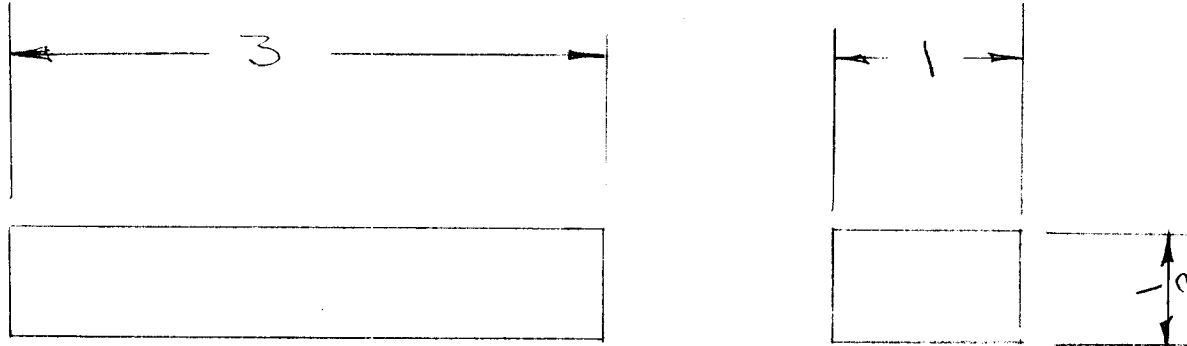
IF IT IS FOUND DESIRABLE TO CHANGE ANY TOLERANCE OR OTHER DETAIL SPECIFIED ON THIS DRAWING NOTIFY THE PURCHASER PROMPTLY.

RY-106

MAXIMUM ALLOWABLE TOLERANCES HAVE BEEN DETERMINED AND DEVIATIONS WILL BE CAUSE FOR REJECTION. REMOVE ALL BURRS AND SHARP EDGES

USED ON

| MODEL | PROJECT NO. | ASS'Y. NO. | DATE |
|-------|-------------|------------|--------|
| DDR-2 | | | 7-2-53 |



NOTICE TO PERSONS RECEIVING THIS DRAWING

THE TECHNICAL MATERIEL CORPORATION claims proprietary right in the material disclosed hereon. This drawing is issued in confidence for engineering information only and may not be reproduced or used to manufacture anything shown hereon without permission from THE TECHNICAL MATERIEL CORPORATION to the user. This drawing is loaned for mutual assistance and is subject to recall at any time.

Property of:

THE TECHNICAL MATERIEL CORPORATION
MAMARONECK, NEW YORK

| REQ. | ITEM | PART NO. | DESCRIPTION | SYMBOL |
|------|------|--------------------|--|--------|
| | | 1/2 x 1 | THE TECHNICAL MATERIEL CORP. MAMARONECK, NEW YORK | |
| | | NEOPRENE | TELEPHONE STOPS | |
| | | MATERIAL | WEIGHT PER PC. | |
| | | TYPE & TEMPER | | |
| | | HEAT TREAT. SPEC. | | |
| | | FINISH & SPEC. NO. | | |

| | | | | | | | |
|-------|------|--------------|------|---------|--------|---------|-----------|
| ISSUE | ITEM | CHANGED FROM | DATE | CN. NO. | DRAFTS | CHECKER | ENG. APP. |
| | | | | | | | |

| | | |
|-------------|---|--|
| ALL OTHERS: | DEC. DIM. ± FRAC. DIM. ± ANGULAR DIM. ± | SCALE DRILL, PUNCH, COMMERCIAL STOCK SIZES AND MANUFACTURERS TOLERANCES ARE NOT INCLUDED. |
|-------------|---|--|

| | | |
|---------|-----------------|-----------------|
| DRAWN | ELEC. DES. APP. | MECH. DES. APP. |
| CHECKED | FINAL APPROVAL | |

| |
|--------|
| RY-106 |
|--------|

IF IT IS FOUND DESIRABLE TO CHANGE ANY TOLERANCE OR OTHER DETAIL SPECIFIED ON THIS DRAWING NOTIFY THE PURCHASER PROMPTLY.

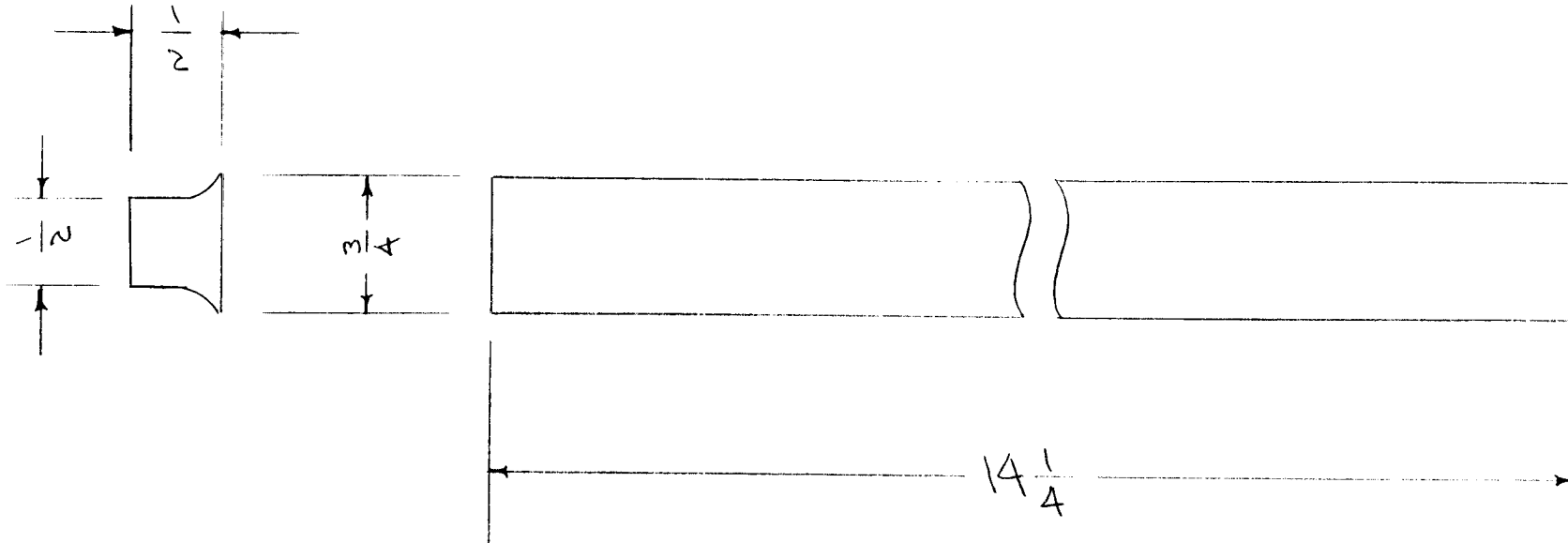
RY-108 A

MAXIMUM ALLOWABLE TOLERANCES HAVE BEEN DETERMINED AND DEVIATIONS WILL BE CAUSE FOR REJECTION. REMOVE ALL BURRS AND SHARP EDGES

REQ. PER UNIT

USED ON

| REQ. PER UNIT | MODEL | PROJECT NO. | ASS'Y. NO. | DATE |
|---------------|-------|-------------|------------|---------|
| 2 | CPMO | 285 | | 9-22-54 |



| REQ. | ITEM | PART NO. | DESCRIPTION | SYMBOL |
|------|----------|--------------------|---|--------|
| | | | THE TECHNICAL MATERIEL CORP. MAMARONECK. NEW YORK | |
| | | STOCK SIZE | BASE, RUBBER | |
| | RUBBER | # | C.P.M.O | |
| | MATERIAL | WEIGHT PER PC. | | |
| | | | | |
| | | TYPE & TEMPER | C.D.D. 9-22-54 | |
| | | # | | |
| | | HEAT TREAT. SPEC. | DRAWN | |
| | | # | ELEC. DES. APP. MECH. DES. APP. | |
| | | FINISH & SPEC. NO. | CHECKED | |
| | | | FINAL APPROVAL | |
| | | | RY-108 A | |

| A | 1 | SHAPE CHANGED | 10/11/54 | 1 | J.A.S. | W.S. | W.S. |
|-------|------|---------------|----------|---------|--------|---------|-----------|
| ISSUE | ITEM | CHANGED FROM | DATE | CN. NO. | DRAFTS | CHECKER | ENG. APP. |

| | | |
|-------------|--|---|
| TOLERANCES | | SCALE |
| ALL OTHERS: | DEC. DIM. ± FRAC. DIM. ± 1/64 ANGULAR DIM. ± | DRILL, PUNCH, COMMERCIAL STOCK SIZES AND MANUFACTURERS TOLERANCES ARE NOT INCLUDED. |

STANDARD DRAWING

REQ. PER UNIT

USED ON

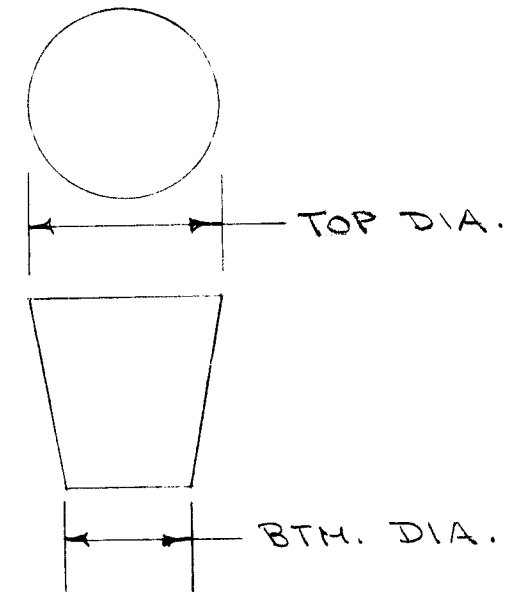
MODEL

ASS'Y. NO.

DATE

RY-114

| CATALOG NUMBER | SIZE | TOP DIAM. | | BOTTOM DIAM. | | APPROX. NUMBER PER POUND |
|----------------|--------|-----------|---------|--------------|---------|--------------------------|
| | | MM. | DECIMAL | MM. | DECIMAL | |
| 77700 | 00 | 15 | (.590) | 10 | (.393) | 117 |
| 77702 | 0 | 17 | (.669) | 13 | (.511) | 82 |
| 77704 | 1 | 19 | (.748) | 14 | (.551) | 57 |
| 77706 | 2 | 20 | (.787) | 16 | (.629) | 52 |
| 77708 | 3 | 24 | (.944) | 18 | (.708) | 39 |
| 77710 | 4 | 26 | (1.023) | 20 | (.787) | 33 |
| 77712 | 5 | 27 | (1.062) | 23 | (.905) | 28 |
| 77714 | 5 1/2 | 29 | (1.141) | 25 | (.984) | 26 |
| 77716 | 6 | 32 | (1.259) | 26 | (1.023) | 20 |
| 77718 | 6 1/2 | 34 | (1.338) | 27 | (1.062) | 18 |
| 77720 | 7 | 37 | (1.456) | 30 | (1.181) | 15 |
| 77722 | 8 | 41 | (1.614) | 33 | (1.299) | 12 |
| 77724 | 9 | 45 | (1.771) | 37 | (1.456) | 10 |
| 77726 | 10 | 50 | (1.968) | 42 | (1.653) | 8 |
| 77728 | 10 1/2 | 53 | (2.086) | 45 | (1.771) | 7 |
| 77730 | 11 | 56 | (2.204) | 48 | (1.889) | 6 |
| 77732 | 11 1/2 | 60 | (2.362) | 51 | (2.007) | 5 |
| 77734 | 12 | 64 | (2.519) | 54 | (2.125) | 4 |
| 77736 | 13 | 68 | (2.677) | 58 | (2.283) | 4 |
| 77738 | 14 | 90 | (3.543) | 75 | (2.952) | 2 |
| 77740 | 15 | 103 | (4.055) | 83 | (3.267) | 1 |

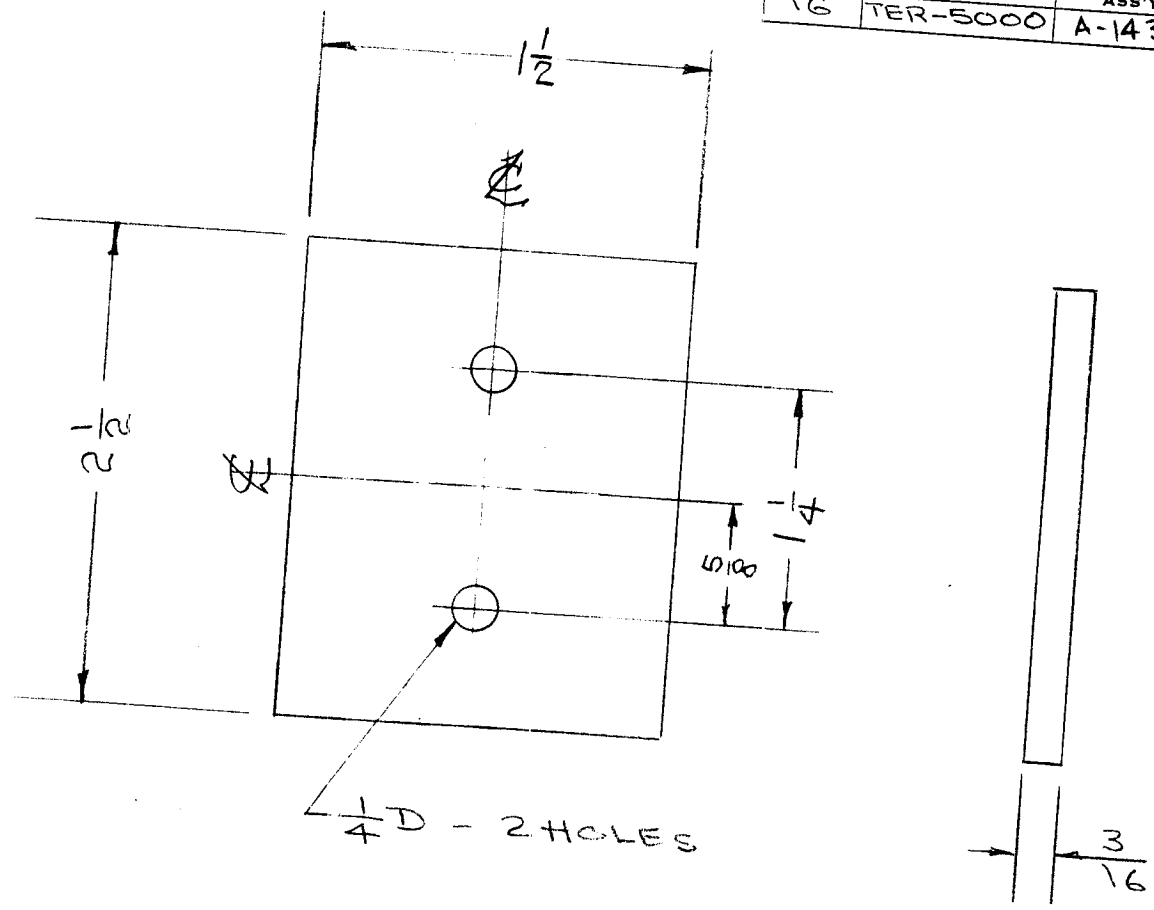


RY-114 ----- 77700
 Drawing Number Catalog Number

REF: New York Laboratory Supply Company, Inc.

| REQ. ITEM | PART NO. | DESCRIPTION | SYMB L |
|--------------------|-------------------|---|----------------------------------|
| | | THE TECHNICAL MATERIEL CORP. MAMARONECK. NEW YORK | |
| | STOCK SIZE | RUBBER, STOPPER | |
| | RUBBER | | |
| | MATERIAL | | |
| ISSUE ITEM | CHANGED FROM | DATE | CH. NO. DRAFTS CHECKER ENG. APP. |
| TOLERANCES | | SCALE: | |
| DEC. DIM. ± | | MAXIMUM ALLOWABLE TOLERANCES HAVE BEEN DETERMINED AND ANY DEVIATIONS WILL BE CAUSE FOR REJECTION. | |
| FRAC. DIM. ± | | REMOVE ALL BURRS AND SHARP EDGES | |
| ANGULAR DIM. ± | | | |
| Pure Gum | HEAT TREAT. SPEC. | DRAWN | CHECKED |
| FINISH & SPEC. NO. | | ELEC. DES. APP. | MECH. DES. APP. |
| | | RY-114 | |

| | | | | |
|---------------|-------------|------------|---------|----------|
| REQ. PER UNIT | USED ON | | | RY-115 A |
| | MODEL | ASS'Y. NO. | DATE | |
| | 1G TER-5000 | A-1431(8) | 3-22-57 | |

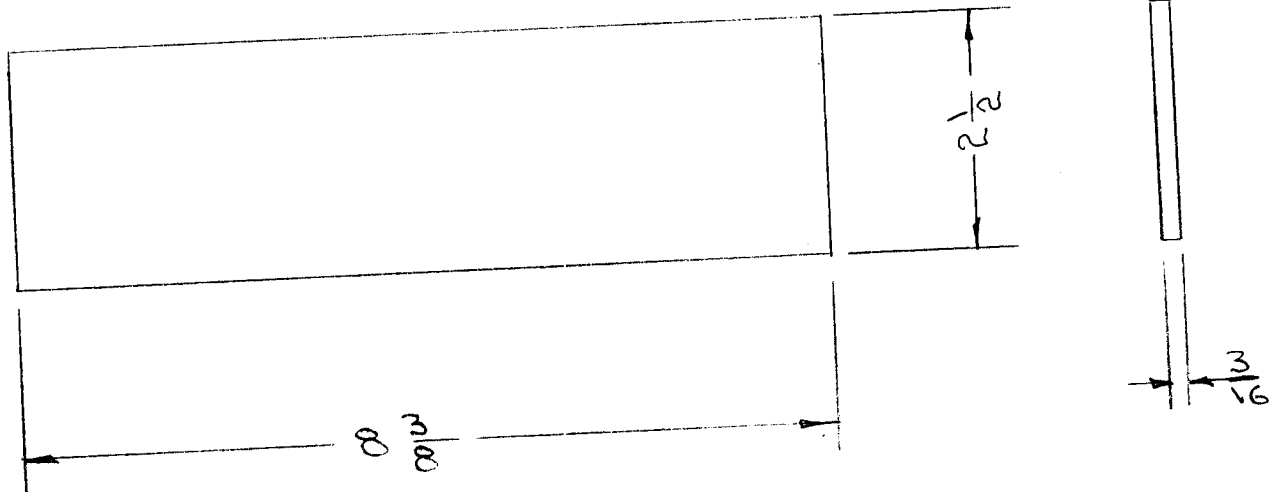


| ISSUE | ITEM | CHANGED FROM | DATE | CH. NO. | DRAFTS | CHECKER | ENG. APP. | REQ. ITEM | PART NO. | DESCRIPTION | SYMBOL |
|-------|------|---------------------|------|---------|--------|---------|-----------|-----------|--------------------|------------------------------|----------------|
| A | 2 | Finish Was Natural | 9557 | 1 | SE | JAD | JM | | 3/16 THICK | THE TECHNICAL MATERIEL CORP. | |
| | 1 | Overall Dim. Was 2" | | | | | | | STOCK SIZE | MAMARONECK, NEW YORK | |
| | | | | | | | | | NEOPRENE | SHOCK ABSORBER, RUBBER | |
| | | | | | | | | | MATERIAL | (TER-5000) | |
| | | | | | | | | | TYPE & TEMPER | JAD 3/22/57 | |
| | | | | | | | | | HEAT TREAT. SPEC. | JAD | |
| | | | | | | | | | BLACK | DRAWN | |
| | | | | | | | | | FINISH & SPEC. NO. | CHECKED | |
| | | | | | | | | | | | FINAL APPROVAL |
| | | | | | | | | | | | RY-115 A |
| | | | | | | | | | | ELEC. DES. APP. | |
| | | | | | | | | | | MECH. DES. APP. | |

DEC. DIM. ±
 FRAC. DIM. ±
 ANGULAR DIM. ±

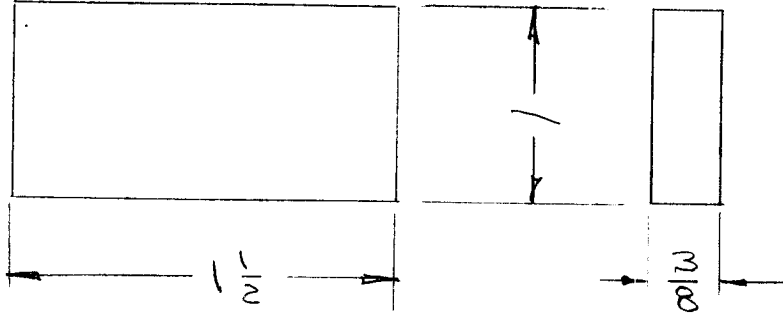
SCALE:
 MAXIMUM ALLOWABLE TOLERANCES HAVE BEEN DETERMINED AND ANY DEVIATIONS WILL BE CAUSE FOR REJECTION.
 REMOVE ALL BURRS AND SHARP EDGES

| | | | | |
|---------------|----------|------------|---------|--------|
| REQ. PER UNIT | USED ON | | | RY-116 |
| | MODEL | ASS'Y. NO. | DATE | |
| 4 | TER-5000 | A-1431 (8) | 3-22-57 | |

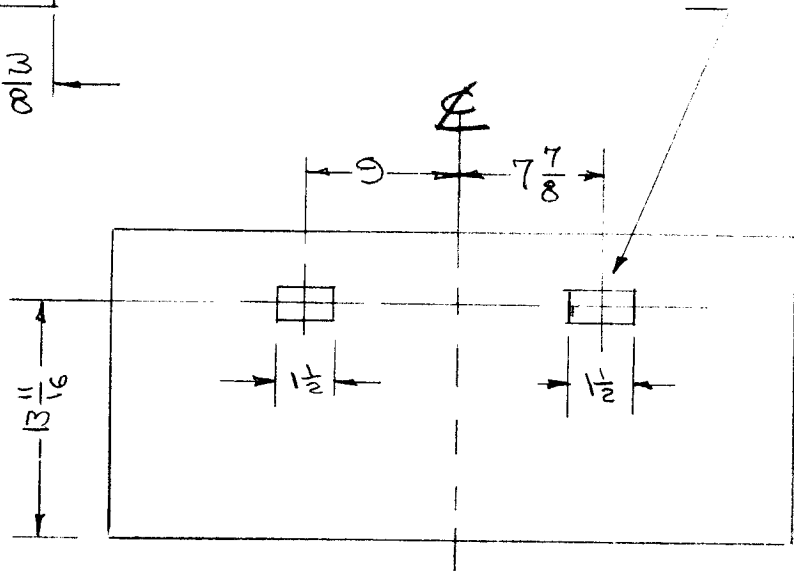


| | | | | | | | REQ. ITEM | PART NO. | DESCRIPTION | SYMBOL | | | | |
|----------------|--------------|--|---------|--------|---------|-----------|--------------------|-------------------|--|-----------------|--|--|--|--|
| | | | | | | | | 3/16 THICK | THE TECHNICAL MATERIEL CORP. MAMARONECK, NEW YORK | RY-116 | | | | |
| | | | | | | | | STOCK SIZE | | | | | | |
| | | | | | | | | NEOPRENE | SPACER, PEDESTAL | | | | | |
| | | | | | | | | MATERIAL | (TER-5000) | | | | | |
| ISSUE ITEM | CHANGED FROM | DATE | CH. NO. | DRAFTS | CHECKER | ENG. APP. | | | | | | | | |
| TOLERANCES | | SCALE: | | | | | | | | | | | | |
| DEC. DIM. ± | | MAXIMUM ALLOWABLE TOLERANCES HAVE BEEN DETERMINED AND ANY DEVIATIONS WILL BE CAUSE FOR REJECTION. REMOVE ALL BURRS AND SHARP EDGES | | | | | | | | | | | | |
| FRAC. DIM. ± | | | | | | | TYPE & TEMPER | HEAT TREAT. SPEC. | DRAWN | CHECKED | | | | |
| ANGULAR DIM. ± | | | | | | | FINISH & SPEC. NO. | | ELEC. DES. APP. | MECH. DES. APP. | | | | |

| | | | | |
|---------------|---------|------------|---------|--------|
| REQ. PER UNIT | USED ON | | | RY-117 |
| | MODEL | ASS'Y. NO. | DATE | |
| 2 | A-1279 | | 5-21-57 | |



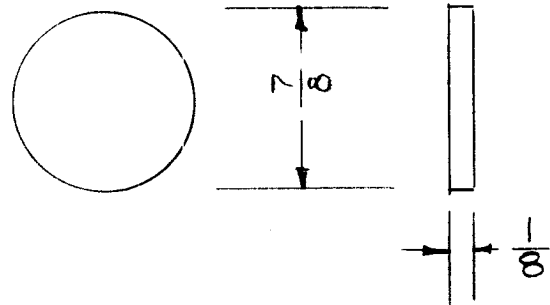
NOTE:
ATTACH WITH PLIO BOND



FRONT OF CHASSIS
(MS-1058)

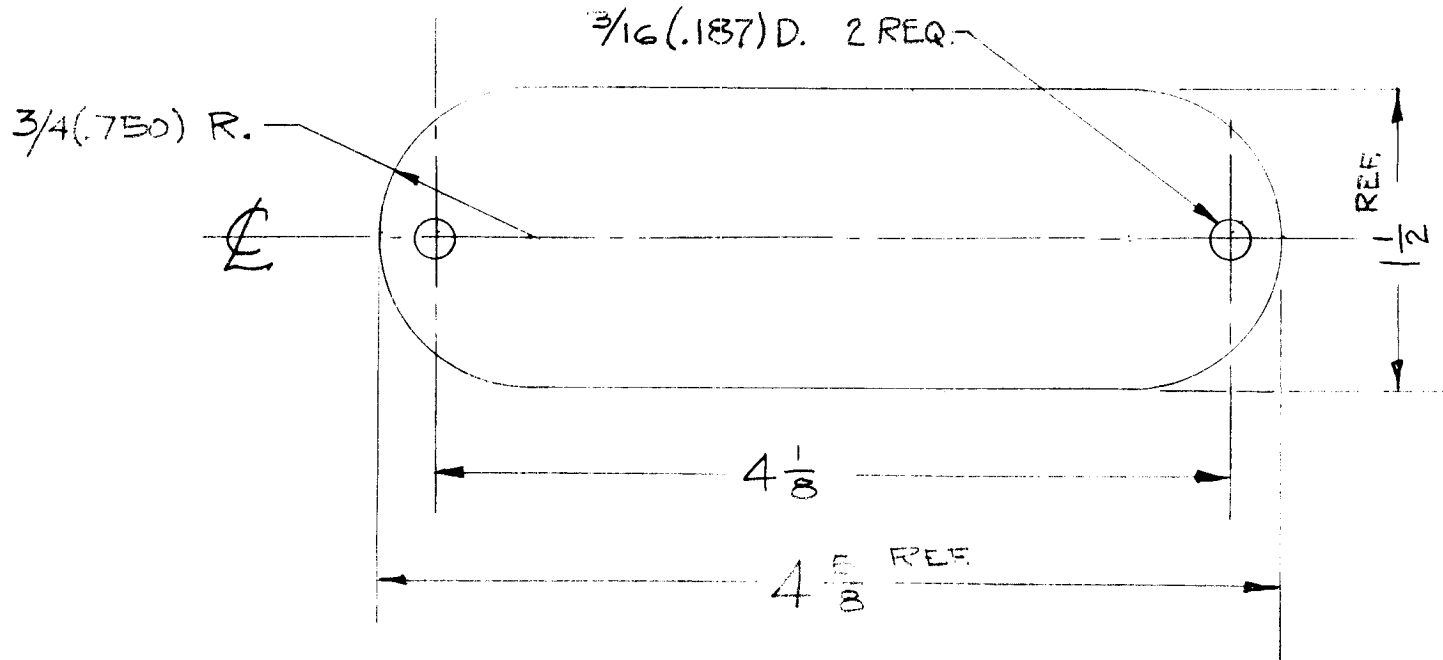
| REQ. | ITEM | PART NO. | DESCRIPTION | | SYMBOL | | | | | | | | | | | | |
|----------------|------|--------------|--|---------|--------|--------------------|-----------|-------------------|--|-----------------|--|---------|--|----------------|--|--|--|
| | | 3/8 THICK | THE TECHNICAL MATERIEL CORP. | | | | | | | | | | | | | | |
| | | STOCK SIZE | MAMARONECK, NEW YORK | | | | | | | | | | | | | | |
| | | NEOPRENE | SPACER, RUBBER | | | | | | | | | | | | | | |
| | | MATERIAL | A-1279 | | | | | | | | | | | | | | |
| ISSUE | ITEM | CHAN ED FROM | DATE | CH. NO. | DRAFTS | CHECKER | ENG. APP. | | | | | | | | | | |
| TOLERANCES | | | SCALE: | | | | | | | | | | | | | | |
| DEC. DIM. ± | | | MAXIMUM ALLOWABLE TOLERANCES HAVE BEEN DETERMINED AND ANY DEVIATIONS WILL BE CAUSE FOR REJECTION. REMOVE ALL BURRS AND SHARP EDGES | | | TYPE & TEMPER | | HEAT TREAT. SPEC. | | DRAWN | | CHECKED | | FINAL APPR VAL | | | |
| FRAC. DIM. ± | | | | | | NATURAL | | | | | | | | | | | |
| ANGULAR DIM. ± | | | | | | FINISH & SPEC. NO. | | ELEC. DES. APP. | | MECH. DES. APP. | | | | | | | |
| | | | | | | | | | | | | | | RY-117 | | | |

| | | | | | |
|---------------------|---------|------------|---------|--------|---|
| REQ. PER UNIT | USED ON | | | RY-118 | A |
| | MODEL | ASS'Y. NO. | DATE | | |
| 1 | A-1397 | | 6-13-57 | | |
| 1 | 513-2 | | 5-5-58 | | |



| ISSUE | ITEM | CHANGED FROM | DATE | CH. NO. | DRAFTS | CHECKER | ENG. APP. | REQ. ITEM | PART NO. | DESCRIPTION | SYMBOL | |
|---|------|---------------|---|---------|--------|---------|-----------|----------------------|-------------------|--|-----------------|----------------|
| | | | | | | | | 15/16 O.D. x 1/8 THK | | THE TECHNICAL MATERIEL CORP. MAMARONECK, NEW YORK | | |
| | | | | | | | | STOCK SIZE | | SHOCK ABSORBER, | | |
| A | 1 | 7/8 WAS 15/16 | 7-15-57 | 1 | R. | JAN 202 | | NEOPRENE | | | | |
| | | | | | | | | MATERIAL | | | | |
| TOLERANCES | | | SCALE: | | | | | | | 6613-57 | JAN 202 | JAN 202 |
| DEC. DIM. ± FRAC. DIM. ± ANGULAR DIM. ± | | | MAXIMUM ALLOWABLE TOLERANCES HAVE BEEN DETERMINED AND ANY DEVIATIONS WILL BE CAUSE FOR REJECTION. REMOVE ALL BURRS AND SHARP EDGES | | | | | TYPE & TEMPER | HEAT TREAT. SPEC. | DRAWN | CHECKED | FINAL APPROVAL |
| | | | | | | | | FINISH & SPEC. NO. | | ELEC. DES. APP. | MECH. DES. APP. | RY-118 A |

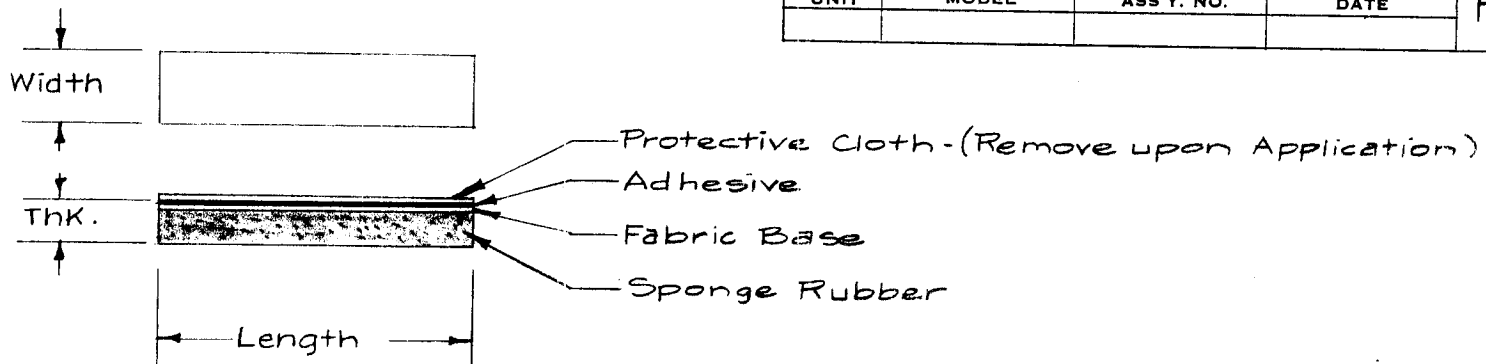
| | | | | |
|---------------|---------|------------|---------|--------|
| REQ. PER UNIT | USED ON | | | RY-120 |
| | MODEL | ASS'Y. NO. | DATE | |
| 2 | TLI-1 | A-1485 | 7-16-57 | |



| REQ. | ITEM | PART NO. | DESCRIPTION | | | SYMBOL | | | | | | | | | | |
|--------------------|------|--------------|---|---------|--------|---------|--------------------|--|-------------------|--|-----------------|--|---------|--|----------------|--|
| | | $1/16$ THK | THE TECHNICAL MATERIEL CORP. | | | | | | | | | | | | | |
| | | STOCK SIZE | MAMARONECK, NEW YORK | | | | | | | | | | | | | |
| | | NEOPRENE | GASKET, COVER | | | | | | | | | | | | | |
| | | MATERIAL | | | | | | | | | | | | | | |
| ISSUE | ITEM | CHANGED FROM | DATE | CH. NO. | DRAFTS | CHECKER | ENG. APP. | | | | | | | | | |
| TOLERANCES | | | SCALE: | | | | | | | | | | | | | |
| DEC. DIM. \pm | | | MAXIMUM ALLOWABLE TOLERANCES HAVE BEEN DETERMINED AND ANY DEVIATIONS WILL BE CAUSE FOR REJECTION. REM VE ALL BURRS AND SHARP EDGES | | | | TYPE & TEMPER | | HEAT TREAT. SPEC. | | DRAWN | | CHECKED | | FINAL APPROVAL | |
| FRAC. DIM. \pm | | | | | | | NONE | | | | | | | | RY-120 | |
| ANGULAR DIM. \pm | | | | | | | FINISH & SPEC. NO. | | ELEC. DES. APP. | | MECH. DES. APP. | | | | | |

STANDARD DRAWING

| | | | | | |
|---------------|---------|------------|------|---------|---|
| REQ. PER UNIT | USED ON | | | RY-121- | D |
| | MODEL | ASS'Y. NO. | DATE | | |



| WIDTH CODE | WIDTH | AVAILABLE THICKNESS (in.) | | | | | | | | | |
|------------|--------|---------------------------|------|-----|------|-----|------|-----|------|-------|--|
| | | 1/8 | 3/16 | 1/4 | 5/16 | 3/8 | 7/16 | 1/2 | 9/16 | 1-1/2 | |
| 4 | 1/4" | X | X | | | | | | | | |
| 6 | 3/8" | X | X | X | X | X | X | | | | |
| 8 | 1/2" | X | X | X | X | X | X | | X | | |
| 12 | 3/4" | X | X | X | X | X | X | | X | | |
| 16 | 1" | X | X | X | X | X | X | | X | | |
| 20 | 1-1/4" | X | X | X | X | X | X | X | X | | |
| 24 | 1-1/2" | X | X | X | X | X | X | X | X | | |
| 28 | 1-3/4" | X | X | X | X | X | X | X | X | | |
| 32 | 2" | X | X | X | X | X | X | X | X | | |
| 36 | 36" | X | X | X | X | X | X | | X | | |
| 48 | 3" | | | | | | | | | X | |

Type Designation to be as follows:

RY-121-8-3-5.00

TMC DWG. No. WIDTH (in 16's) THKNESS (in inches) LENGTH (in inches) REQ.

EXAMPLE - RY-121-8-3-5.00 = Rubber Strip, 1/2" wide, 3/16" Thk., 5" Long.

| | | | | | | | |
|----------------|-----------------------------------|---|-------|---------|--------|---------|-----------|
| D | WIDTH CODE 48 ADD; 1/2" THICKNESS | 2-15-65 | 13449 | 12 | JTB | | |
| C | CLERICAL CHANGE | 8-24-64 | | WB | | | |
| B | REF CODE ADDED | 7-17-63 | 9597 | | | | |
| A | PURCHASING INFO DELETED | 1/10/58 | 1 | 16 | | | |
| ISSUE ITEM | | CHANGED FROM | DATE | CH. NO. | DRAFTS | CHECKER | ENG. APP. |
| TOLERANCES | | SCALE: 5401-225 | | | | | |
| DEC. DIM. ± | | MAXIMUM ALLOWABLE TOLERANCES HAVE BEEN DETERMINED AND ANY DEVIATIONS WILL BE CAUSE FOR REJECTION. | | | | | |
| FRAC. DIM. ± | | REM VE ALL BURRS AND SHARP EDGES | | | | | |
| ANGULAR DIM. ± | | | | | | | |

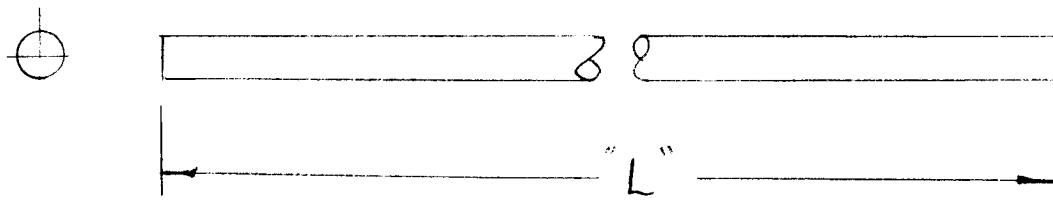
| | | | |
|--------------------|----------|------------------------------|----------|
| REQ. ITEM | PART NO. | DESCRIPTION | SYMBOL |
| | | THE TECHNICAL MATERIEL CORP. | |
| | | MAMARONECK. NEW YORK | |
| | | STRIP, SPONGE RUBBER | |
| MATERIAL | | | |
| STOCK SIZE | | | |
| TYPE & TEMPER | | | |
| HEAT TREAT. SPEC. | | | |
| FINISH & SPEC. NO. | | | |
| ELEC. DES. APP. | | | |
| MECH. DES. APP. | | | |
| | | LG | |
| | | AW | |
| | | ASJ | |
| | | | RY-121-D |

AVAILABLE DIAM.

| CODE | DIAM. |
|------|-------|
| 2 | 1/8 |
| 3 | 3/16 |
| 4 | 1/4 |
| 5 | 5/16 |
| 6 | 3/8 |
| 7 | 7/16 |
| 8 | 1/2 |
| 10 | 5/8 |
| 12 | 3/4 |
| 14 | 7/8 |
| 16 | 1 |
| 18 | 1 1/8 |
| 20 | 1 1/4 |
| 22 | 1 3/8 |
| 24 | 1 1/2 |

| REQ. PER UNIT | USED ON | | |
|---------------|---------|------------|--------|
| | MODEL | ASS'Y. NO. | DATE |
| | | | RY-122 |

STANDARD DRAWING



NOMENCLATURE TO BE IN THE FOLLOWING FORM:

RY-122 -2- 50
 TMC DWG. NO. DIAM. CODE LENGTH ("L") INCHES

EXAMPLES- RY-122 -2-10 = Rubber Strip, 1/8 DIAM., 10" Long
 RY-122 -4-5.25 = Rubber Strip, 1/4 DIAM., 5-1/4" Lg.

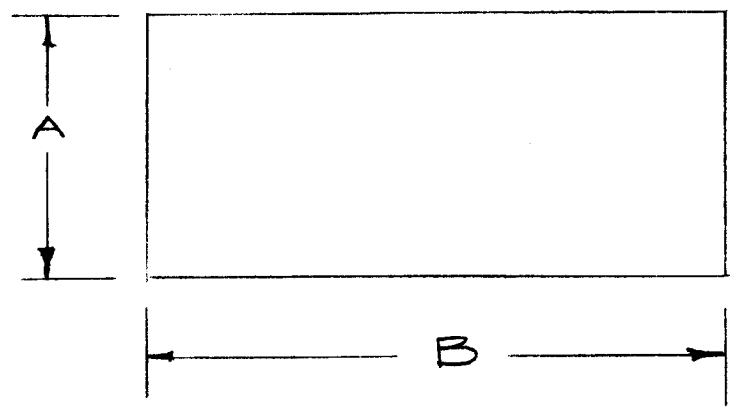
U.S. RUBBER SUPPLY

| REQ. | ITEM | PART NO. | DESCRIPTION | SYMBOL | | | | | | | |
|----------------|------|--------------|---|----------------------|--------|--------------------|-----------|-------------------|-----------------|---------|----------------|
| | | See Chart | THE TECHNICAL MATERIEL CORP. MAMARONECK, NEW YORK | STRIP, RUBBER, ROUND | | | | | | | |
| | | STOCK SIZE | | | | | | | | | |
| | | NEOPRENE | | | | | | | | | |
| MATERIAL | | | | | | | | | | | |
| ISSUE | ITEM | CHANGED FROM | DATE | CH. NO. | DRAFTS | CHECKER | ENG. APP. | | | | |
| TOLERANCES | | | SCALE: | | | | | 16 2/3 58 | A. J. J. | | |
| DEC. DIM. ± | | | MAXIMUM ALLOWABLE TOLERANCES HAVE BEEN DETERMINED AND ANY DEVIATIONS WILL BE CAUSE FOR REJECTION. REMOVE ALL BURRS AND SHARP EDGES | | | TYPE & TEMPER | | HEAT TREAT. SPEC. | DRAWN | CHECKED | FINAL APPROVAL |
| FRAC. DIM. ± | | | | | | FINISH & SPEC. NO. | | ELEC. DES. APP. | MECH. DES. APP. | | |
| ANGULAR DIM. ± | | | | | | | | | RY-122 | | |

| TMC NO. | DIM. A | DIM. B | USED ON MODEL |
|----------|--------|--------|---------------|
| RY-123-1 | 1-1/4 | 3-1/4 | A-1504 |
| RY-123-2 | 11/16 | 3-5/16 | CSS-1A |
| RY-123-3 | 3/4 | 2-1/8 | CSS-1A |
| RY-123-4 | 3/4 | 1-3/4 | CSS-1A |
| RY-123-5 | 1/2 | 3/4 | GPR-92 |
| RY-123-6 | 5/8 | 3/4 | GPT-200K |
| | | | |
| | | | |
| | | | |

| REQ. PER UNIT | USED ON | | |
|---------------|---------|------------|------|
| | MODEL | ASS'Y. NO. | DATE |
| | | | |
| | | | |

RY-123 C

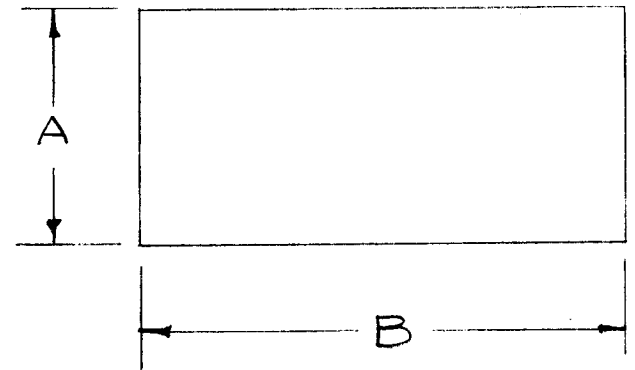


| ISSUE | ITEM | CHANGED FROM | DATE | CH. NO. | DRAFTS | CHECKER | ENG. APP. | REQ. ITEM | PART NO. | DESCRIPTION | SYMBOL | | |
|-------------------|------|---------------------------------|--|---------|--------|---------|-----------|--------------------|------------|--|--------|-----------------|--|
| C | 3 | ON CHART ADDED RY-123-6 | 7-2-63 | 9423 | | | | | | | | | |
| | 2 | MATERIAL WAS RUBBER FINISH NAME | | | | | | | | | | | |
| | 1 | MATERIAL WAS "SHEET RUBBER" | | | | | | | | | | | |
| B | 1 | RY-123-5 ADDED | 11-5-62 | 7617 | | | | | 1/16" THK. | THE TECHNICAL MATERIEL CORP. MAMARONECK, NEW YORK | | | |
| A | 1 | RY-123-2,3,4 ADDED | 2-15-62 | 6237 | | | | | NEOPRENE | RUBBER STRIP, SOLID, 1/16" THK | | | |
| TOLERANCES | | | | | | | | DURO 50 TO 60 | | 6/28/58 | | | |
| DEC. DIM. ± | | | SCALE: $\frac{1}{2}$ | | | | | TYPE & TEMPER | | DRAWN | | CHECKED | |
| FRAC. DIM. ± 1/64 | | | MAXIMUM ALLOWABLE TOLERANCES HAVE BEEN DETERMINED AND ANY DEVIATIONS WILL BE CAUSE FOR REJECTION. REMOVE ALL BURRS AND SHARP EDGES | | | | | BLACK | | ELEC. DES. APP. | | MECH. DES. APP. | |
| ANGULAR DIM. ± | | | | | | | | FINISH & SPEC. NO. | | RY-123 | | C | |

| TMC NO. | DIM. A | DIM. B | USED ON MODEL | ASS'Y NO. |
|----------|--------|--------|---------------|-----------|
| RY-24-1 | 1-3/8 | 1-3/8 | SBE-2 | A-1514 |
| RY-124-2 | 1-3/8 | 5 | CPP-1 | |
| RY-124-3 | 5 | 5 | | |
| | | | | |
| | | | | |
| | | | | |
| | | | | |
| | | | | |
| | | | | |
| | | | | |
| | | | | |
| | | | | |

| REQ. PER UNIT | USED ON | | |
|---------------|---------|------------|--------|
| | MODEL | ASS'Y. NO. | DATE |
| 1 | SBE-2 | | 5-5-58 |

RY-124 C

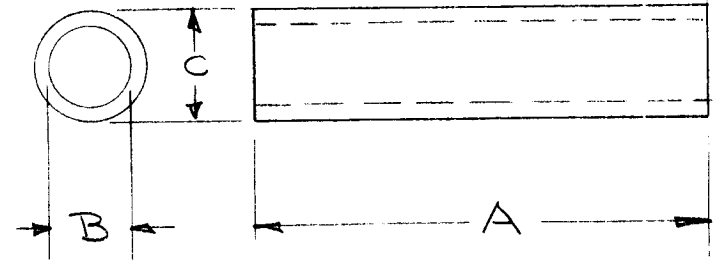


| ISSUE | ITEM | CHANGED FROM | DATE | CH. NO. | DRAFTS | CHECKER | ENG. APP. |
|----------------|------|--|---------|---------|--------|---------|-----------|
| C | 1 | ON RY-124-3 DELETED FROM USED ON CHART REF TO GPT-40K, AP-102. | 11-1-60 | 3349 | DDM | | |
| B | 1 | RY124-3 ADDED | 8-11-60 | # | cy | | |
| A | 1 | RY124-2 ADDED | 5-18-60 | # | ra | | |
| TOLERANCES | | SCALE: | | | | | |
| DEC. DIM. ± | | MAXIMUM ALLOWABLE TOLERANCES HAVE BEEN DETERMINED AND ANY DEVIATIONS WILL BE CAUSE FOR REJECTION. REMOVE ALL BURRS AND SHARP EDGES | | | | | |
| FRAC. DIM. ± | | | | | | | |
| ANGULAR DIM. ± | | | | | | | |

| REQ. | ITEM | PART NO. | DESCRIPTION | SYMBOL |
|------|------|--------------------|--|-----------------|
| | | 1/8 THK. | THE TECHNICAL MATERIEL CORP. MAMARONECK, NEW YORK | |
| | | STOCK SIZE | | |
| | | NEOPRENE | SHEET RUBBER, 1/8 THK. | |
| | | MATERIAL | | |
| | | TYPE & TEMPER | HEAT TREAT. SPEC. | DRAWN |
| | | Natural | | CHECKED |
| | | FINISH & SPEC. NO. | ELEC. DES. APP. | MECH. DES. APP. |
| | | | | RY-124 C |

| TMC PART NO | A | B | C |
|-------------|-----|------|-----|
| RY-125 -1 | 2 | 3/8 | 1/2 |
| RY-125 -2 | 1 | 7/16 | 5/8 |
| RY125-3 | 3/8 | 7/16 | 5/8 |

| REQ. PER UNIT | USED ON | | |
|---------------|---------|------------|----------|
| | MODEL | ASS'Y. NO. | DATE |
| | | | |
| | | | RY-125 B |



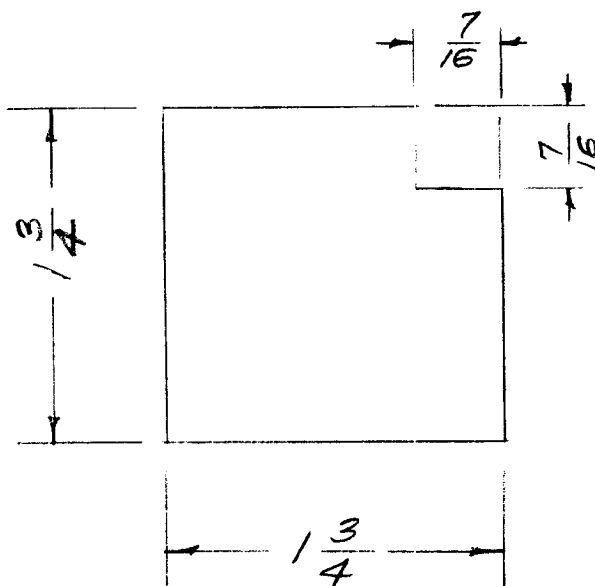
REF: MILLER PRODUCTS

| REQ. ITEM | PART NO. | DESCRIPTION | SYMBOL |
|--------------------|----------------|---|-------------------|
| | | THE TECHNICAL MATERIEL CORP. MAMARONECK. NEW YORK | |
| | | STOCK SIZE | |
| B | ADD RY125-3 | # 45 NROPRENE RUBBER TUBING | BUSHING, NROPRENE |
| A 2 | ADDED RY-125-2 | | |
| ISSUE | ITEM | CHANGED FROM | DATE |
| | | | CH. NO. |
| | | | DRAFTS |
| | | | CHECKER |
| | | | ENG. APP. |
| TOLERANCES | | SCALE: \pm | |
| DEC DIM. \pm | | MAXIMUM ALLOWABLE TOLERANCES HAVE BEEN DETERMINED AND ANY DEVIATIONS WILL BE CAUSE FOR REJECTION. | |
| FRAC. DIM. \pm | | REMOVE ALL BURRS AND SHARP EDGES | |
| ANGULAR DIM. \pm | | | |
| TYPE & TEMPER | | HEAT TREAT. SPEC. | DRAWN |
| BLACK | | | CHECKED |
| FINISH & SPEC. NO. | | ELEC. DES. APP. | MECH. DES. APP. |
| | | | RY-125 B |

| REQ. PER UNIT | USED ON | | |
|---------------|-----------|------------|--------|
| | MODEL | ASS'Y. NO. | DATE |
| 1 | MSR-1,3,4 | A-1581 | 9-5-58 |
| 1 | FFR-2 | A-1581 | 9-5-58 |

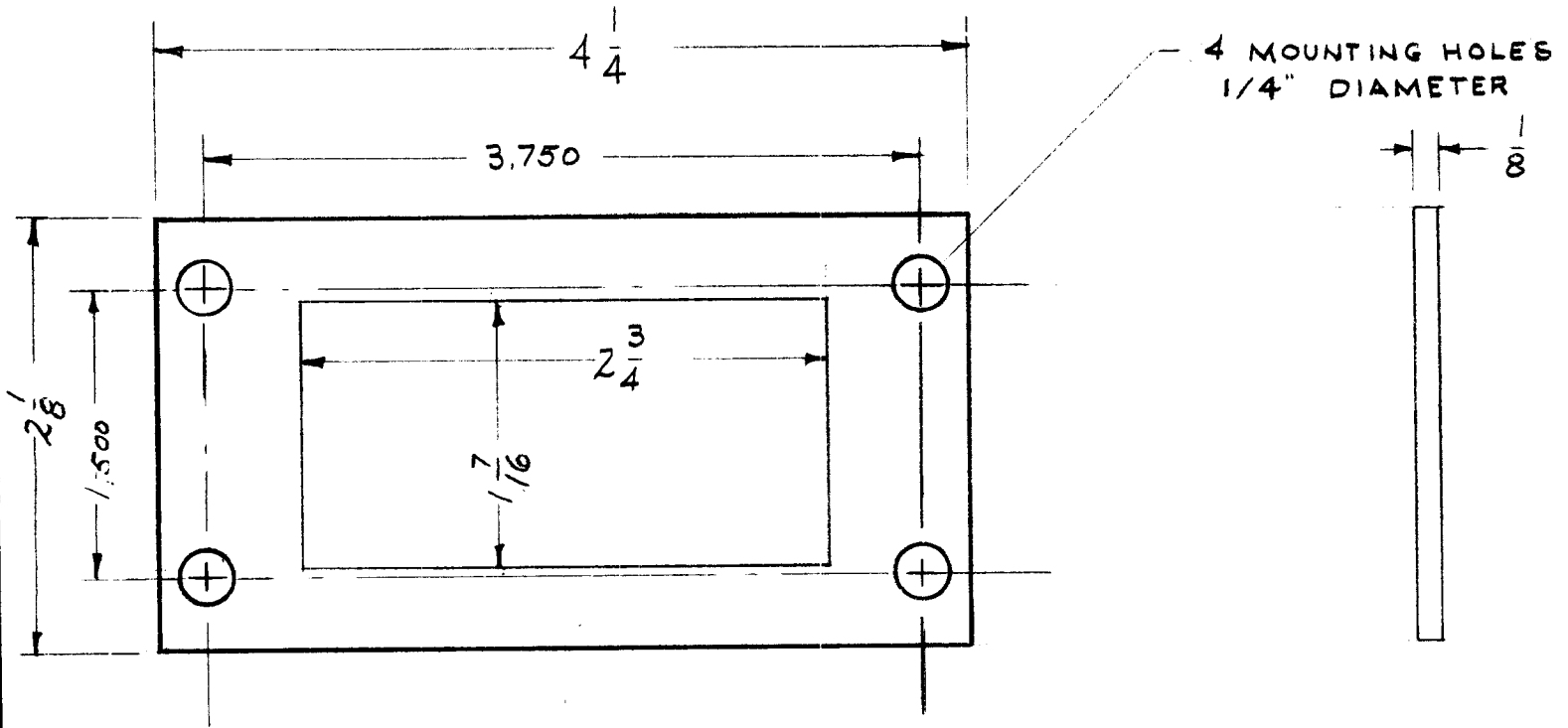
RY-126

A



| | | | | | | | REQ. ITEM | PART NO. | DESCRIPTION | SYMBOL | | | | |
|---------------------------------|------|-------------------------------|---|--------------|--------|------------|---------------------|--|-------------------|-----------------|---------|----------------|--|--|
| A | 1 | STOCK SIZE WAS $\frac{3}{16}$ | 6-18-G3 | 9307 | | <i>JNY</i> | $\frac{3}{32}$ THK. | THE TECHNICAL MATERIEL CORP. MAMARONECK, NEW YORK | | | | | | |
| — | — | — | 9/8/58 | 443 Pr. 1 | 16 | — | Neoprene | CUSHION, CAPACITOR | | | | | | |
| ISSUE | ITEM | CHANGED FROM | DATE | CH. NO. | DRAFTS | CHECKER | ENG. APP. | MATERIAL | | | | | | |
| TOLERANCES | | | SCALE: FULL | | | | | | | | | | | |
| DEC. DIM. \pm | | | MAXIMUM ALLOWABLE TOLERANCES HAVE BEEN DETERMINED AND ANY DEVIATIONS WILL BE CAUSE FOR REJECTION. REMOVE ALL BURRS AND SHARP EDGES | | | | TYPE & TEMPER | | HEAT TREAT. SPEC. | DRAWN | CHECKED | FINAL APPR VAL | | |
| FRAC. DIM. \pm $\frac{1}{16}$ | | | | | | | FINISH & SPEC. NO. | | ELEC. DES. APP. | MECH. DES. APP. | | | | |
| ANGULAR DIM. \pm | | | | | | | | | | | | | | |
| | | | | | | | | | | RY-126 | A | | | |

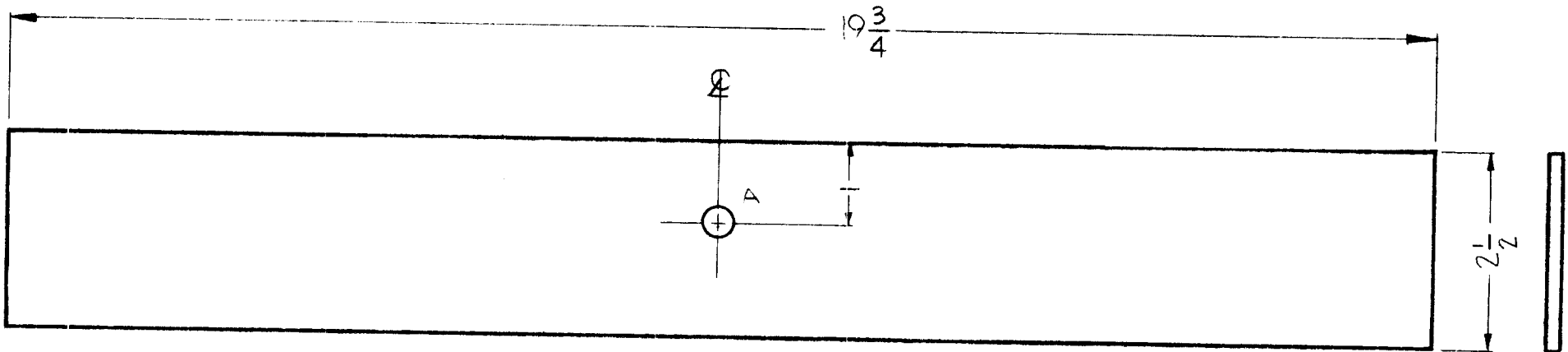
| | | | | | |
|----------------|---------|------------|---------|--------|---|
| REQ. PER. UNIT | USED ON | | | RY-127 | A |
| | MODEL | ASS'Y. NO. | DATE | | |
| | 1 | RFB-1 | GPT-10K | | |
| 1 | RFD-1 | PAL-1K | 6-23-59 | | |



| | | | | | | | REQ. | ITEM | PART NO. | DESCRIPTION | SYMBOL | | | | | | |
|----------------|------|-------------------|---|---------|--------|--------------------|--------------------|--------------------|--------------------|--|--------|---------|--|--|----------------|--|--|
| | | | | | | | | | 1/8 | THE TECHNICAL MATERIEL CORP. MAMARONECK, NEW YORK | | | | | | | |
| | | | | | | | | | NEOPRENE | GASKET, BLOWER DUCT | | | | | | | |
| | | | | | | | | | MATERIAL | | | | | | | | |
| A | 1 | REVISED & REDRAWN | 7/14/59 | - | PI | <i>[Signature]</i> | <i>[Signature]</i> | <i>[Signature]</i> | <i>[Signature]</i> | <i>[Signature]</i> | | | | | | | |
| ISSUE | ITEM | CHANGED FROM | DATE | CH. NO. | DRAFTS | CHECKER | ENG. APP. | | | | | | | | | | |
| TOLERANCES | | | SCALE: | | | | | | | | | | | | | | |
| DEC. DIM. ± | | | MAXIMUM ALLOWABLE TOLERANCES HAVE BEEN DETERMINED AND ANY DEVIATIONS WILL BE CAUSE FOR REJECTION: | | | | | | | | | | | | | | |
| FRAC. DIM. ± | | | REMOVE ALL BURRS AND SHARP EDGES | | | | | | | | | | | | | | |
| ANGULAR DIM. ± | | | TYPE & TEMPER | | | HEATTREAT. SPEC. | | | DRAWN | | | CHECKED | | | FINAL APPROVAL | | |
| | | | FINISH & SPEC. NO. | | | ELEC. DES. APP | | | MECH. DES. APP | | | RY-127 | | | A | | |

| | | | | |
|---------------|---------------|-----------|--------|--------|
| REQ. PER UNIT | USED ON | | | RY-128 |
| | MODEL | ASSY. NO. | DATE | |
| 1 | G.P.T. 10,000 | 1 PA | 1-2-59 | |

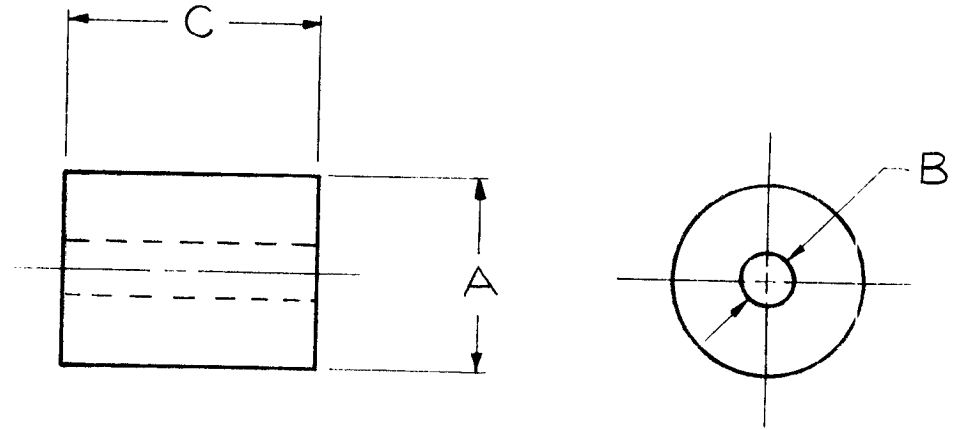
A - 3/16 (.187) DIA. 1 REQ



| ISSUE | ITEM | CHANGED FROM | DATE | CH. NO. | DRAFTS | CHECKER | ENG. APP. | REQ. | ITEM | PART NO. | DESCRIPTION | SYMBOL | |
|---|------|--------------|---|---------|--------|---------|-----------|--------------------|-------------------|----------------|--|----------------|--|
| | | | | | | | | | 1/8 | STOCK SIZE | THE TECHNICAL MATERIEL CORP. MAMARONECK, NEW YORK | | |
| | | | | | | | | | NEOPRENE | MATERIAL | DUCT, BLOWER INTAKE | | |
| TOLERANCES | | | SCALE: | | | | | | | J.C. BIELE | | <i>OMPS</i> | |
| DEC. DIM. ± FRAC. DIM. ± ANGULAR DIM. ± | | | MAXIMUM ALLOWABLE TOLERANCES HAVE BEEN DETERMINED AND ANY DEVIATIONS WILL BE CAUSE FOR REJECTION: REMOVE ALL BURRS AND SHARP EDGES | | | | | TYPE & TEMPER | HEAT TREAT. SPEC. | DRAWN | CHECKED | FINAL APPROVAL | |
| | | | | | | | | FINISH & SPEC. NO. | | ELEC. DES. APP | MECH. DES. APP | RY-128 | |

| | | | | |
|---------------|---------|------------|--------|--------|
| REQ. PER UNIT | USED ON | | | RY-129 |
| | MODEL | ASS'Y. NO. | DATE | |
| 18 | GPR | | 2-5-59 | |

| TMC PART NO. | MFG. PART NO. | A | B | C |
|--------------|---------------|-------|------|-------|
| RY129-1 | R 271 | 7/16 | 3/32 | 5/16 |
| -2 | R 272 * | 43/64 | 3/16 | 5/8 |
| -3 | R 273 | 1/2 | 3/32 | 3/8 |
| -4 | R 274 | 15/32 | 3/32 | 15/32 |
| -5 | R 275 | 5/16 | 1/8 | 1/2 |
| -6 | R 276 | .480 | .093 | .360 |
| -7 | R 277 | .375 | .097 | .395 |
| -8 | R 278 | .375 | .125 | 21/64 |
| -9 | R 2711 | 7/16 | .160 | 5/16 |
| -10 | R 2712 | 7/16 | .182 | 5/16 |
| -11 | R 2721 * | 43/64 | 1/8 | 5/8 |
| -12 | R 2722 | 7/16 | .130 | 5/16 |



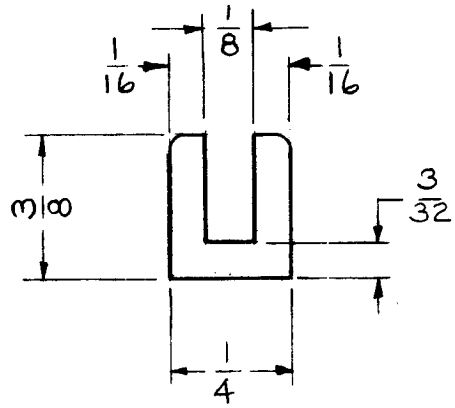
* SERRATED EDGE

NOTE~NOMINAL HARDNESS
60 - 70 DUROMETER

| ISSUE | ITEM | CHANGED FROM | DATE | CH. NO. | DRAFTS | CHECKER | ENG. APP. | REQ. | ITEM | PART NO. | DESCRIPTION | SYMBOL | | | | | |
|----------------|------|--------------|---|---------|--------|---------|-----------|--------------------|------|------------------|--|----------------|--|---------|--|----------------|--|
| | | | | | | | | | | | THE TECHNICAL MATERIEL CORP. MAMARONECK, NEW YORK ROLLER, RUBBER | | | | | | |
| | | | | | | | | | | STOCK SIZE | | | | | | | |
| | | | | | | | | | | RUBBER | | | | | | | |
| | | | | | | | | | | | | | | | | | |
| TOLERANCES | | | SCALE: REF~ S-401-109 | | | | | SEE NOTE | | MATERIAL | | | | | | | |
| DEC. DIM. ± | | | MAXIMUM ALLOWABLE TOLERANCES HAVE BEEN DETERMINED AND ANY DEVIATIONS WILL BE CAUSE FOR REJECTION. REMOVE ALL BURRS AND SHARP EDGES | | | | | TYPE & TEMPER | | HEATTREAT. SPEC. | | DRAWN | | | | | |
| FRAC. DIM. ± | | | | | | | | FINISH & SPEC. N . | | ELEC. DES. APP | | MECH. DES. APP | | CHECKED | | FINAL APPROVAL | |
| ANGULAR DIM. ± | | | | | | | | | | | | | | | | RY-129 | |

STANDARD DRAWING

| | | | | | |
|---------------|---------|-----------|---------|--------|---|
| REQ. PER UNIT | USED ON | | | RY-131 | A |
| | MODEL | ASSY. NO. | DATE | | |
| | GPT-40K | | 7-20-60 | | |



RY-131-5
 TMC PART NO. LENGTH IN INCHES

| ISSUE | ITEM | CHANGED FROM | DATE | CH. NO. | DRAFTS | CHECKER | ENG. APP. | REQ. ITEM | PART NO. | DESCRIPTION | SYMBOL | |
|--|------|--|---|---------|--------|---------|-----------|--------------------|------------------|--|---------|----------------|
| | | | | | | | | | | THE TECHNICAL MATERIEL CORP. MAMARONECK, NEW YORK | | |
| | | | | | | | | | STOCK SIZE | CHANNEL, U, RUBBER | | |
| A | | 1/16 DIM WAS 3/32 (2 PLACES) 1/4 DIM WAS 5/16 | 2/24/65 | 13559 | 82 | JCH | | | RUBBER | | | |
| | | | | | | | | | MATERIAL | | | |
| TOLERANCES | | | SCALE: 2-1 | | | | | | | | | |
| DEC. DIM. ± FRAC. DIM. ± 1/64 ANGULAR DIM. ± | | | MAXIMUM ALLOWABLE TOLERANCES HAVE BEEN DETERMINED AND ANY DEVIATIONS WILL BE CAUSE FOR REJECTION. REMOVE ALL BURRS AND SHARP EDGES | | | | | | | | | |
| | | | | | | | | TYPE & TEMPER | HEATTREAT. SPEC. | DRAWN | CHECKED | FINAL APPROVAL |
| | | | | | | | | | | | | |
| | | | | | | | | FINISH & SPEC. NO. | ELEC. DES. APP | MECH. DES. APP | RY-131 | A |

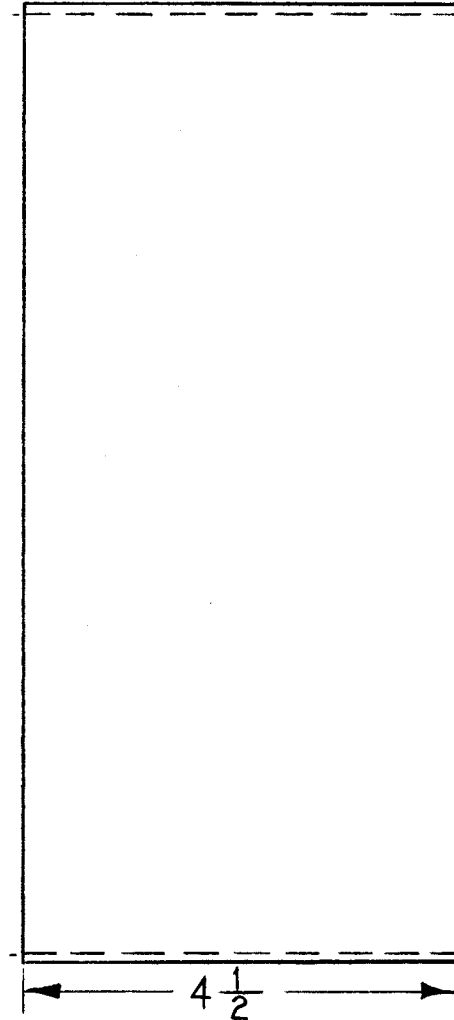
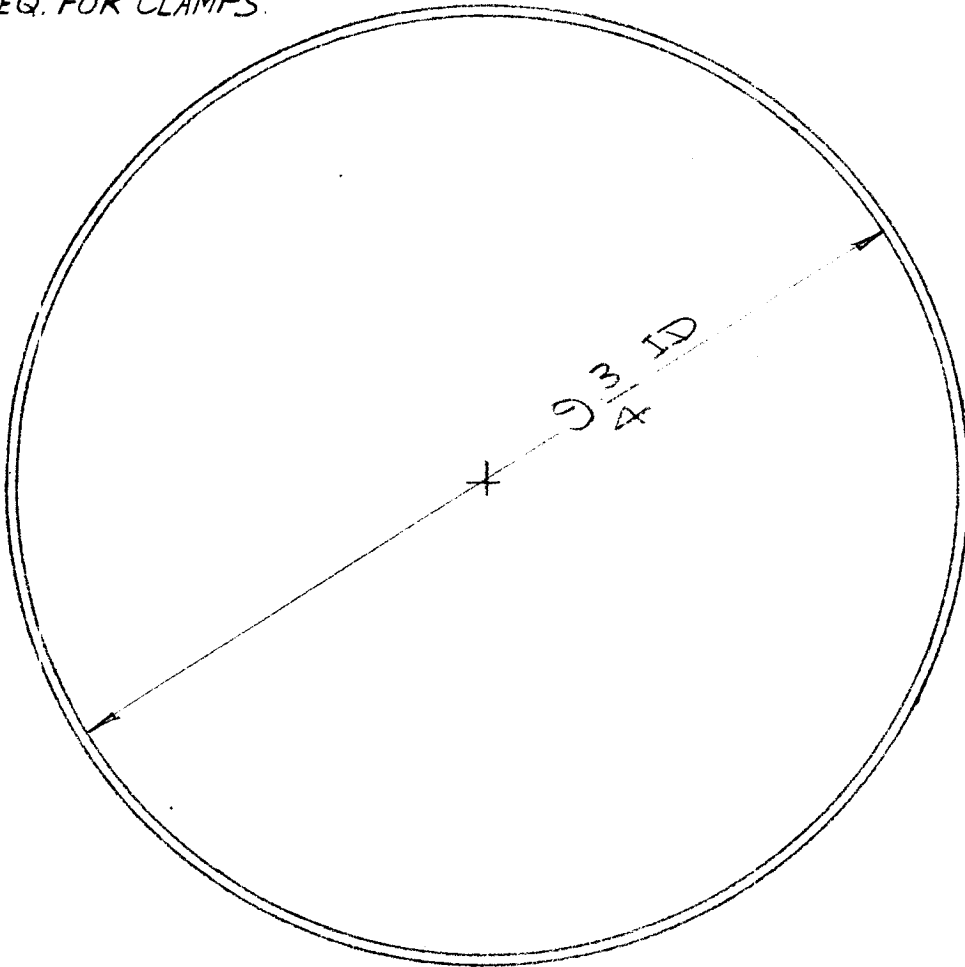
NOTE:

USE CU-129-18-SS

2 REQ. FOR CLAMPS.

| REQ. PER UNIT | MODEL | USED ON | |
|---------------|---------|------------|----------|
| | | AS 'Y. NO. | DATE |
| 1 | GPT-40K | | 12-27-60 |

RY-133

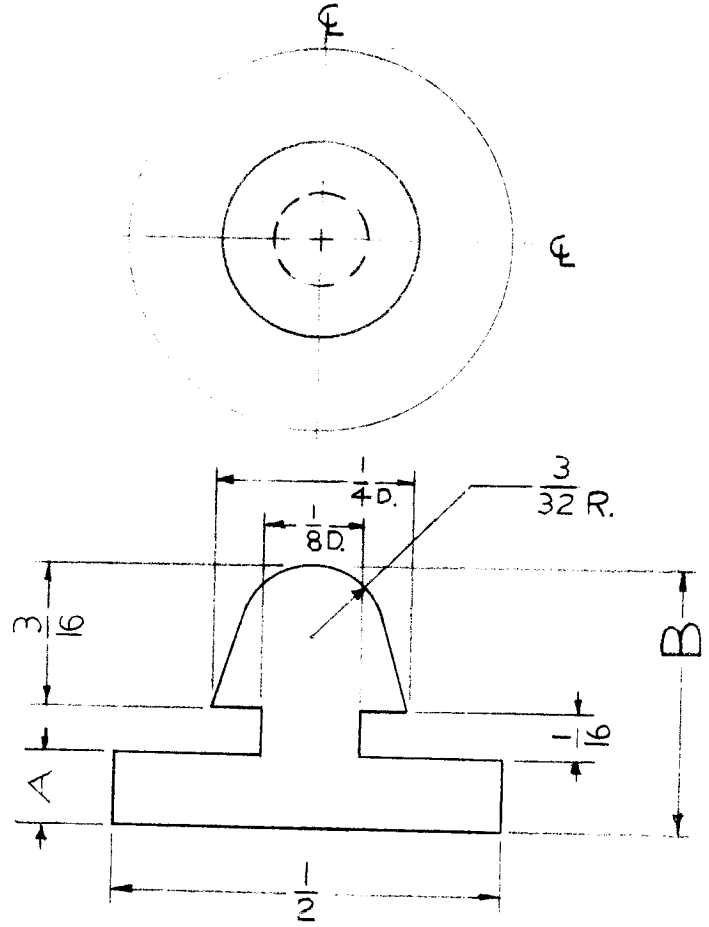


| | | | | | | | REQ. | ITEM | PART NO. | DESCRIPTION | SYMBOL | | | |
|----------------|------|--------------|--|---------|--------|---------|--------------------|------|----------------|---|--------|--|--|--|
| | | | | | | | | | 1/16 THICK | THE TECHNICAL MATERIEL CORP. MAMARONECK, NEW YORK HOSE, RUBBER COATED (FLEXHOSE) | | | | |
| | | | | | | | | | STOCK SIZE | | | | | |
| | | | | | | | | | MATERIAL | | | | | |
| ISSUE | ITEM | CHANGED FROM | DATE | CH. NO. | DRAFTS | CHECKER | ENG. APP. | | | | | | | |
| TOLERANCES | | | SCALE: 2:1 (DO NOT SCALE) | | | | | | | | | | | |
| DEC. DIM. ± | | | MAXIMUM ALLOWABLE TOLERANCES HAVE BEEN DETERMINED AND ANY DEVIATIONS WILL BE CAUSE FOR REJECTION. REMOVE ALL BURRS AND SHARP EDGES | | | | | | | | | | | |
| FRAC. DIM. ± | | | | | | | | | | | | | | |
| ANGULAR DIM. ± | | | | | | | | | | | | | | |
| | | | | | | | FINISH & SPEC. NO. | | ELEC. DES. APP | MECH. DES. APP | RY-133 | | | |

| TMC PART NO. | MFG. PART NO. | A | B |
|--------------|---------------|-------|-------|
| RY-135-1 | 1178-1 | 3/32 | 11/32 |
| RY-135-2 | 1178-2 | 5/32 | 13/32 |
| RY-135-3 | 1178-3 | 13/32 | 21/32 |

| REQ. PER. UNIT | USED ON | | |
|----------------|---------|-----------|---------|
| | MODEL | ASSY. NO. | DATE |
| | TER-25K | | 9-28-61 |

RY-135



| ISSUE | ITEM | CHANGED FROM | DATE | CH. NO. | DRAFTS | CHECKER | ENG. APP. |
|----------------|------|--------------|--|---------|--------|---------|-----------|
| | | | | | | | |
| TOLERANCES | | | SCALE: X4 | | | | |
| DEC. DIM. ± | | | MAXIMUM ALLOWABLE TOLERANCES HAVE BEEN DETERMINED AND ANY DEVIATIONS WILL BE CAUSE FOR REJECTION. REMOVE ALL BURRS AND SHARP EDGES | | | | |
| FRAC. DIM. ± | | | | | | | |
| ANGULAR DIM. ± | | | | | | | |

| REQ. | ITEM | PART NO. | DESCRIPTION | | SYMBOL |
|------|------|----------|--|------------------|----------------|
| | | | THE TECHNICAL MATERIEL CORP. MAMARONECK, NEW YORK | | |
| | | | RUBBER BUMPER GROMMET TYPE | | |
| | | | LG | DJ | OB |
| | | | TYPE & TEMPER | HEATTREAT. SPEC. | DRAWN |
| | | | | | CHECKED |
| | | | | | FINAL APPROVAL |
| | | | | | RY-135 |
| | | | FINISH & SPEC. NO. | ELEC. DES. APP | MECH. DES. APP |

THE CONTENTS OF THIS DRAWING ARE THE EXCLUSIVE PROPERTY OF THE TECHNICAL MATERIEL CORP. ITS UNAUTHORIZED USE OR REPRODUCTION IN WHOLE OR IN PART IS STRICTLY FORBIDDEN.

REQ. PER UNIT

USED ON

MODEL

ASS'Y. NO.

DATE

RY-137

A

7-26-62

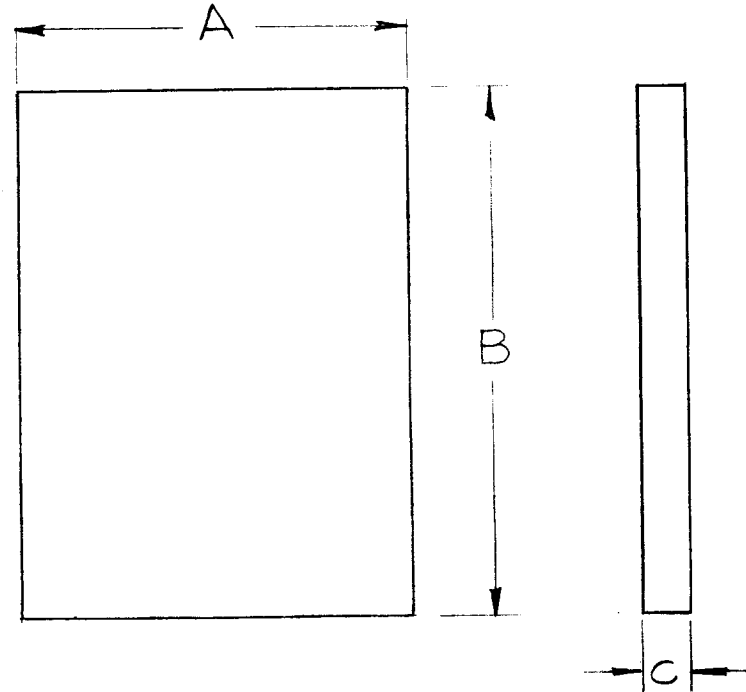
T M C
PART NO.

DIMENSION

A B C

| | | | |
|----------|-------|-------------------------------|------|
| RY-137-1 | 2 | 2 ³ / ₄ | 3/8 |
| RY-137-2 | 2 1/4 | 3 | 3/8 |
| RY-137-3 | 4 1/8 | 3 | 3/16 |
| RY-137-4 | 1 5/8 | 3 1/2 | 3/16 |
| RY-137-5 | 1 5/8 | 3 1/16 | 3/16 |

STANDARD DRAWING

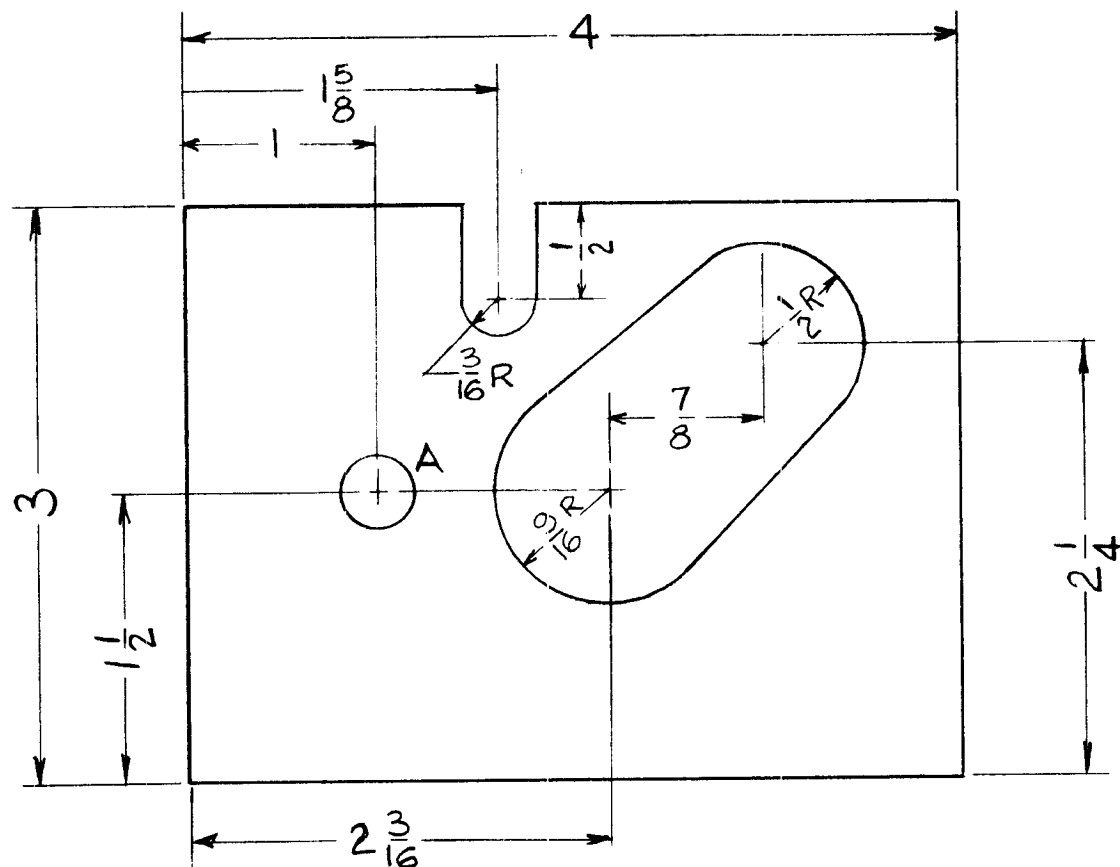


| REQ. | ITEM | PART NO. | POSE | DESCRIPTION | SYMBOL |
|--|--|---|-------------------|------------------------------|----------------|
| | | 3/8" THK. | | THE TECHNICAL MATERIEL CORP. | |
| | | STOCK SIZE | | MAMARONECK, NEW YORK | |
| | | POLYURETHANE (ESTANE 5740X1) | | INSULATION, OVEN | |
| | | MATERIAL | | | |
| A | RY-137-4, RY-137-5 ADDED REQ. PER UNIT DELETED (ON BUILDUP) | 8-30-62 7170 SG | <i>JWA</i> | <i>BP</i> | |
| DATE | CH. NO. | DRAFTS | CHECKER | ENG. APP. | |
| UNLESS OTHERWISE SPECIFIED: | | SCALE: DO NOT SCALE (S-401-II) | | | |
| DIMENSIONS ARE IN INCHES | | MAXIMUM ALLOWABLE TOLERANCES HAVE BEEN DETERMINED AND ANY DEVIATIONS WILL BE CAUSE FOR REJECTION. | | | |
| TOLERANCES ON | | REMOVE ALL BURRS AND SHARP EDGES | | | |
| FRAC. ± 1/64 DEC. ± .005 ANGLES ± 1/2° | | TYPE & TEMPER | HEAT TREAT. SPEC. | DRAWN | CHECKED |
| | | | | <i>G.D.L.</i> | <i>BP</i> |
| | | FINISH & SPEC. NO. | ELEC. DES. APP. | MECH. DES. APP. | FINAL APPROVAL |
| | | | | | RY-137 |
| | | | | | A |

THE CONTENTS OF THIS DRAWING ARE THE EXCLUSIVE PROPERTY OF THE TECHNICAL MATERIEL CORP. ITS UNAUTHORIZED USE OR REPRODUCTION IN WHOLE OR IN PART IS STRICTLY FORBIDDEN.

| REQ. PER UNIT | USED ON | | |
|---------------|---------|------------|---------|
| | MODEL | ASS'Y. NO. | DATE |
| 2 | AFC-3 | | 7-26-62 |

RY-138



HOLES
A - 3/8 DIA. 1 REQ.

| | | | | | | | REQ. | ITEM | PART NO. | WESCHLER DESCRIPTION | SYMBOL | |
|--|-------------|---|---------|--------|---------|-----------|--------------------|------|------------------|------------------------------|--------------------|----------------|
| | | | | | | | 3/8" THK. | | | THE TECHNICAL MATERIEL CORP. | | |
| | | | | | | | STOCK SIZE | | | MAMARONECK, NEW YORK | | |
| | | | | | | | POLYURETHANE | | | INSULATION, OVEN FRONT | | |
| | | | | | | | ESTANE 5740X1 | | | | | |
| | | | | | | | MATERIAL | | | | | |
| SYM | DESCRIPTION | DATE | CH. NO. | DRAFTS | CHECKER | ENG. APP. | | | V.R.R. | <i>[Signature]</i> | <i>[Signature]</i> | |
| UNLESS OTHERWISE SPECIFIED: | | SCALE: | | | | | TYPE & TEMPER | | HEATTREAT. SPEC. | DRAWN | CHECKED | FINAL APPROVAL |
| DIMENSIONS ARE IN INCHES | | MAXIMUM ALLOWABLE TOLERANCES HAVE BEEN DETERMINED AND ANY DEVIATIONS WILL BE CAUSE FOR REJECTION. | | | | | | | | <i>[Signature]</i> | | RY-138 |
| TOLERANCES ON | | REMOVE ALL BURRS AND SHARP EDGES | | | | | FINISH & SPEC. NO. | | ELEC. DES. APP. | MECH. DES. APP. | | |
| FRAC. ± 1/64 DEC. ± 0.05 ANGLES ± 1/20 | | | | | | | | | | | | |

THE CONTENTS OF THIS DRAWING ARE THE EXCLUSIVE PROPERTY OF THE TECHNICAL MATERIEL CORP. ITS UNAUTHORIZED USE FOR REPRODUCTION IN WHOLE OR IN PART IS STRICTLY FORBIDDEN.

REQ. PER UNIT

USED ON

MODEL

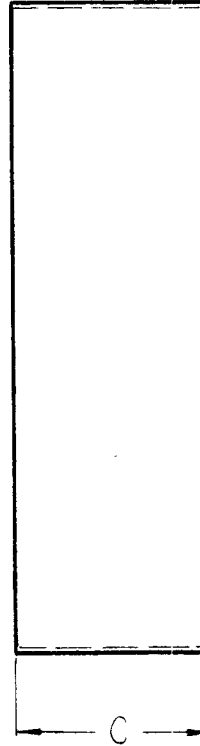
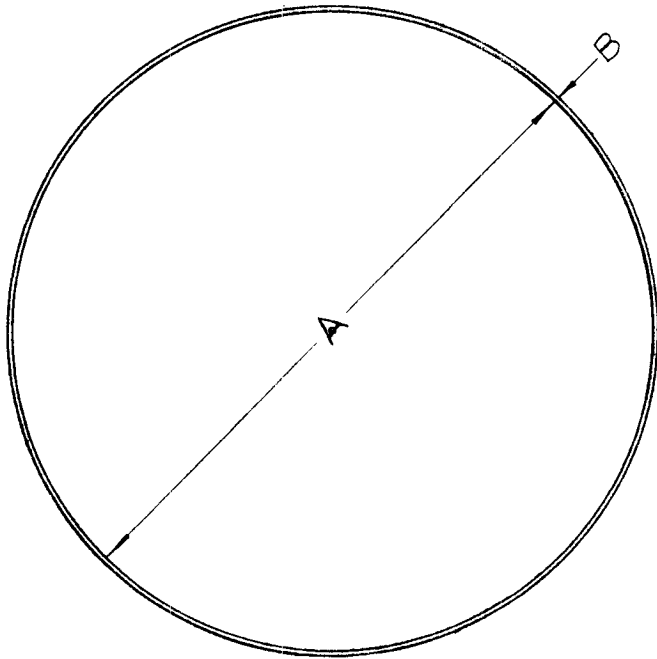
ASS'Y. NO.

DATE

5-29-63

RY-139

0



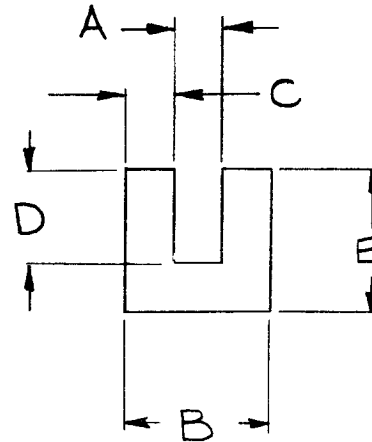
| TMC NO. | MODEL | ASS'Y NO. | REQ. | A | B | C |
|----------|----------|-----------|------|--------|------|---|
| RY-139-1 | GPT-200K | AX-393 | 3 | 13-3/8 | 1/16 | 5 |

| REQ. | ITEM | PART NO. | DESCRIPTION | | | | SYMBOL |
|---|---------------------------------|---|--|-------------------|---------|------------|----------------|
| | | SEE CHART | THE TECHNICAL MATERIEL CORP. MAMARONECK. NEW YORK | | | | |
| | | STOCK SIZE | HOSE, RUBBER COATED | | | | |
| 0 | ORIGINAL RELEASE FOR PRODUCTION | 5-13-64 | 0 | A.M. | | | |
| SYM | DESCRIPTION | DATE | CH. NO. | DRAFTS | CHECKER | ENG. APP. | |
| UNLESS OTHERWISE SPECIFIED DIMENSIONS ARE IN INCHES AND INCLUDE CHEMICALLY APPLIED OR PLATED FINISHES | | SCALE | | | | | |
| DECIMALS .X ± .05 .XX ± .01 .XXX ± .005 | TOLERANCES | FRACTIONS ± 1/64 ANGLES ± 0° 30' | CODE A | | | | |
| | | TYPE & TEMPER | | HEAT TREAT. SPEC. | DRAWN | CHECKED | FINAL APPR VAL |
| | | BLACK | | | SRG | aa | RLC |
| | | FINISH & SPEC. NO. | | | | Mc 4/13/64 | RY-139 |
| | | | | | | | |

| | | | |
|---------------------|----------|------------|---------|
| REQ. PER UNIT | USED ON | | |
| | MODEL | ASS'Y. NO. | DATE |
| | GPT-200K | | 9-11-63 |
| | TTR-10 | | 9-11-63 |

RY-140 A

| TMC PART NO. | MFRS. PART NO. | DIMENSIONS | | | | | MATL. | DUROMETER | COLOR |
|--------------|----------------|------------|-----|------|------|------|----------|-----------|-------|
| | | A | B | C | D | E | | | |
| RY-140-1 | ZX-4065 | 1/16 | 1/8 | 1/32 | 3/16 | 1/4 | NEOPRENE | 50-60 | BLACK |
| RY-140-2 | ZX-4088 | 1/4 | 3/8 | 1/16 | 7/32 | 9/32 | NEOPRENE | 50-60 | BLACK |



NOTE:
TMC PART NO. TO BE IN THE FOLLOWING FORM.

RY-140 - 1 - 10.00
 BASIC NO. LENGTH IN
 PER CHART INCHES

| | | | | | | | | | | | |
|---|------------------------|---|---------|----------|---------|--------------------|---------------|-------------------|--|------------------------------|-----------------------------|
| | | | | | | | REQ. ITEM | PART NO. | KOHN DESCRIPTION E3037 | SYMBOL | |
| | | | | | | | | | THE TECHNICAL MATERIEL CORP. MAMARONECK. NEW YORK | | |
| | | | | | | | | | RUBBER CHANNEL, U TYPE | | |
| A | RY-140-2 ADD. TO CHART | 2-18-65 | 13597 | 82. | QCB | | | | | | |
| SYM | DESCRIPTION | DATE | CH. NO. | DRAFTS | CHECKER | ENG. APP. | MATERIAL | | | | |
| UNLESS OTHERWISE SPECIFIED DIMENSIONS ARE IN INCHES AND INCLUDE CHEMICALLY APPLIED OR PLATED FINISHES | | SCALE | | NONE | | | | | <i>Arkins</i> 9/11/63 DRAWN | <i>HO</i> 9/11/63 CHECKED | <i>BP</i> FINAL APPROVAL |
| DECIMALS .X ± .05 .XX ± .01 .XXX ± .005 | TOLERANCES | FRACTIONS ± 1/64 ANGLES ± 0° 30' | CODE | S401-231 | | | TYPE & TEMPER | HEAT TREAT. SPEC. | R KOHN | R KOHN | RY-140 A |
| | | | | | | FINISH & SPEC. NO. | | ELEC. DES. APP. | MECH. DES. APP. | | |

THE CONTENTS OF THIS DRAWING ARE THE EXCLUSIVE PROPERTY OF THE TECHNICAL MATERIEL CORP. ITS UNAUTHORIZED USE OR REPRODUCTION IN WHOLE OR IN PART IS STRICTLY FORBIDDEN.

REQ. PER UNIT

USED ON

1

MODEL

ASS'Y. NO.

DATE

RY-148 B

2

HFR-1

AX-379

7-26-62

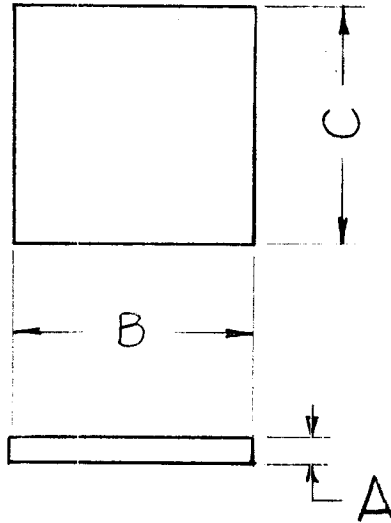
| TMC PART NO. | A | B | C |
|--------------|------|-----|-----|
| RY-148-1 | 1/16 | 5/8 | 5/8 |
| RY-148-2 | 3/32 | 3/4 | 1/2 |
| RY-148-3 | 1/16 | 1/2 | 3/8 |

1

GPR-92

A-3093

6-11-63

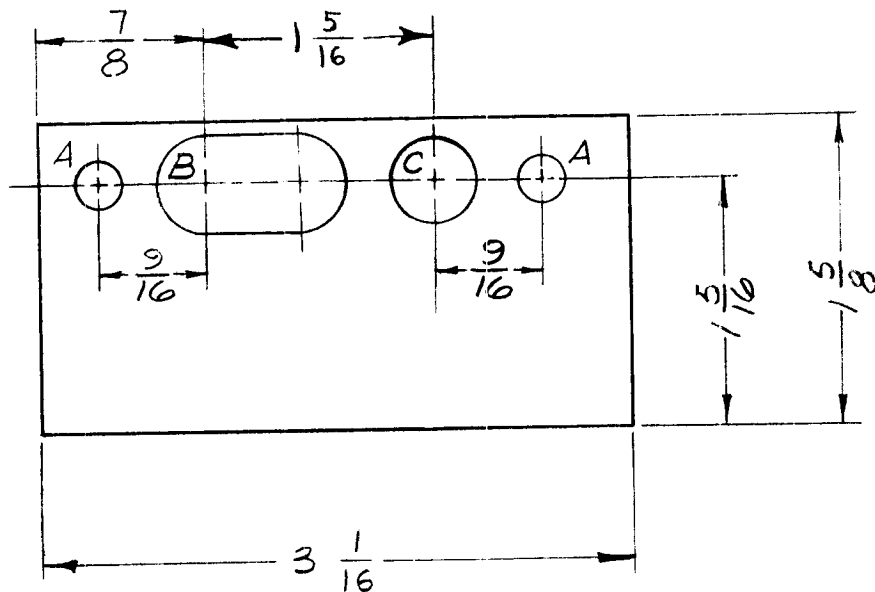


| REQ. | ITEM | PART NO. | KRUY | DESCRIPTION | SYMBOL | | | | | | |
|---|------------------------------------|----------|--------------------|--|------------------|-----------|-----------------|---------|----------------|----------|--|
| | | | | THE TECHNICAL MATERIEL CORP. MAMARONECK, NEW YORK | | | | | | | |
| B | RY 148-3 ADD. | 320.69 | 19369 | GE | | | | | | | |
| A | GPR-92 REF ADDED RY-148-2 ADDED | 61763 | 9293 | Ⓢ | | | | | | | |
| SYM | DESCRIPTION | DATE | CH. NO. | DRAFTS | CHECKER | ENG. APP. | MATERIAL | | | | |
| UNLESS OTHERWISE SPECIFIED: DIMENSIONS ARE IN INCHES TOLERANCES ON FRAC. ± 1/64 DEC. ± .005 ANGLES ± 1/2° | | SCALE: | | | 60 DUROMETER | | | G.D.L. | | | |
| MAXIMUM ALLOWABLE TOLERANCES HAVE BEEN DETERMINED AND ANY DEVIATIONS WILL BE CAUSE FOR REJECTION. REMOVE ALL BURRS AND SHARP EDGES | | | TYPE & TEMPER | | HEATTREAT. SPEC. | | DRAWN | CHECKED | FINAL APPROVAL | | |
| | | | FINISH & SPEC. NO. | | ELEC. DES. APP. | | MECH. DES. APP. | | | | |
| | | | | | | | | | | RY-148 B | |

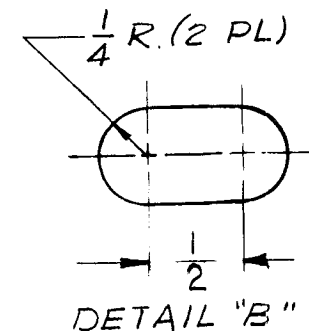
THE CONTENTS OF THIS DRAWING ARE THE EXCLUSIVE PROPERTY OF THE TECHNICAL MATERIEL CORP. ITS UNAUTHORIZED USE OR REPRODUCTION IN WHOLE OR IN PART IS STRICTLY FORBIDDEN.

| REQ. PER UNIT | USED ON | | |
|---------------|---------|-----------|---------|
| | MODEL | ASSY. NO. | DATE |
| 1 | TRX-1 | AO-111 | 8-27-62 |

RY-150



| SYM. | DESCRIPTION | REQ'D |
|------|----------------|-------|
| A | 1/4 DIA. THRU | 2 |
| B | SEE DETAIL "B" | 1 |
| C | 7/16 DIA. THRU | 1 |



| REQ. | ITEM | PART NO. | DESCRIPTION | SYMBOL | | | | | | | |
|---|-------------|----------------------------------|--|---|---------|-----------|--------------------|------------------|-----------------------|---------|----------------|
| | | 3/16 THICK | THE TECHNICAL MATERIEL CORP. MAMARONECK, NEW YORK INSULATION, HEATER | | | | | | | | |
| | | STOCK SIZE | | | | | | | | | |
| | | POLYURETHANE (ESTHANE 5740XI) | | | | | | | | | |
| | | MATERIAL | | | | | | | | | |
| SYM | DESCRIPTION | DATE | CH. NO. | DRAFTS | CHECKER | ENG. APP. | T. RAMIREZ | 3/12/63 | BP | | |
| UNLESS OTHERWISE SPECIFIED: DIMENSIONS ARE IN INCHES TOLERANCES ON FRAC. ± 1/64 DEC. ± .05 ANGLES ± 1/2° | | SCALE: | | MAXIMUM ALLOWABLE TOLERANCES HAVE BEEN DETERMINED AND ANY DEVIATIONS WILL BE CAUSE F R REJECTION. REMOVE ALL BURRS AND SHARP EDGES | | | TYPE & TEMPER | HEATTREAT. SPEC. | DRAWN | CHECKED | FINAL APPROVAL |
| | | | | | | | | | D. Morhans 3-13-63 | RY-150 | |
| | | | | | | | FINISH & SPEC. NO. | ELEC. DES. APP. | MECH. DES. APP. | | |

THE CONTENTS OF THIS DRAWING ARE THE EXCLUSIVE PROPERTY OF THE TECHNICAL MATERIEL CORP. ITS UNAUTHORIZED USE FOR REPRODUCTION IN WHOLE OR IN PART IS STRICTLY FORBIDDEN.

REQ. PER UNIT

USED ON

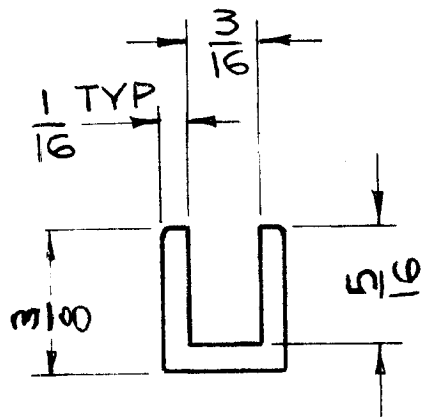
MODEL

ASS'Y. NO.

DATE

RAK-21

RY-151



TMC NOMENCLATURE TO BE IN FOLLOWING FORM

RY-151 - 89.00

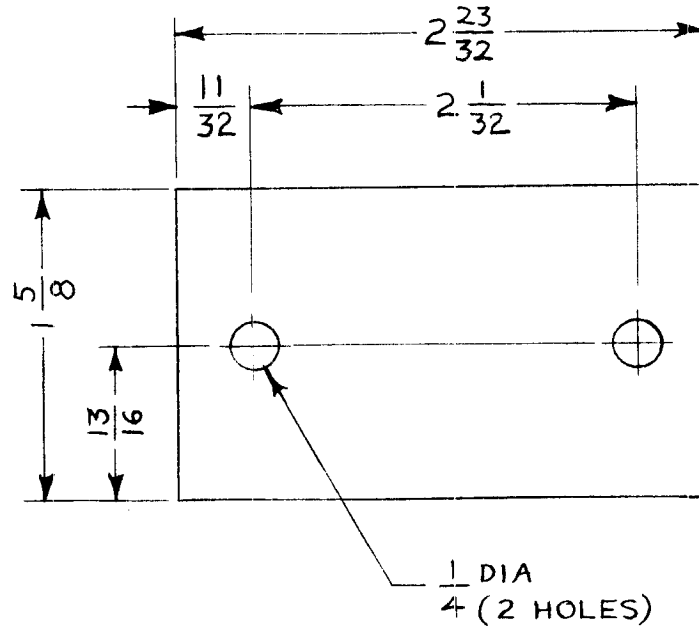
TMC PART NO. LENGTH
IN
INCHES

STANDARD DRAWING

| | | | | | | | REQ. ITEM | PART NO. | KRUY | DESCRIPTION | SYMBOL |
|---|-------------|------|---------|--------|---------|-----------|--------------------|----------|--|-------------|-----------|
| | | | | | | | | | THE TECHNICAL MATERIEL CORP. MAMARONECK. NEW YORK | | |
| | | | | | | | STOCK SIZE | | RUBBER CHANNEL | | |
| | | | | | | | NATURAL RUBBER | | | | |
| | | | | | | | MATERIAL | | | | |
| SYM | DESCRIPTION | DATE | CH. NO. | DRAFTS | CHECKER | ENG. APP. | 30 DUREMETER | | <i>JWS</i> | <i>JWS</i> | <i>BP</i> |
| UNLESS OTHERWISE SPECIFIED DIMENSIONS ARE IN INCHES AND INCLUDE CHEMICALLY APPLIED OR PLATED FINISHES | | | | | | | SCALE | | DRAWN | | |
| | | | | | | | NONE | | CHECKED | | |
| | | | | | | | TYPE & TEMPER | | FINAL APPROVAL | | |
| | | | | | | | HEAT TREAT. SPEC. | | | | |
| | | | | | | | GREY | | <i>T. Krueger</i> | | |
| | | | | | | | FINISH & SPEC. NO. | | RY-151 | | |
| | | | | | | | ELEC. DES. APP. | | MECH. DES. APP. | | |

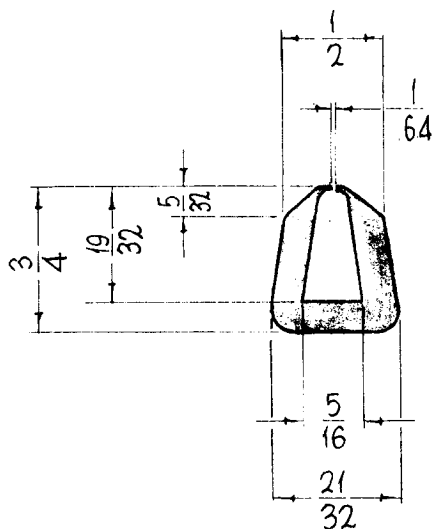
THE CONTENTS OF THIS DRAWING ARE THE EXCLUSIVE PROPERTY OF THE TECHNICAL MATERIEL CORP. ITS UNAUTHORIZED USE FOR REPRODUCTION IN WHOLE OR IN PART IS STRICTLY FORBIDDEN.

| | | | | |
|---------------|---------|------------|---------|--------|
| REQ. PER UNIT | USED ON | | | RY-152 |
| | MODEL | ASS'Y. NO. | DATE | |
| 1 | TRX-1 | | 2/25/63 | |



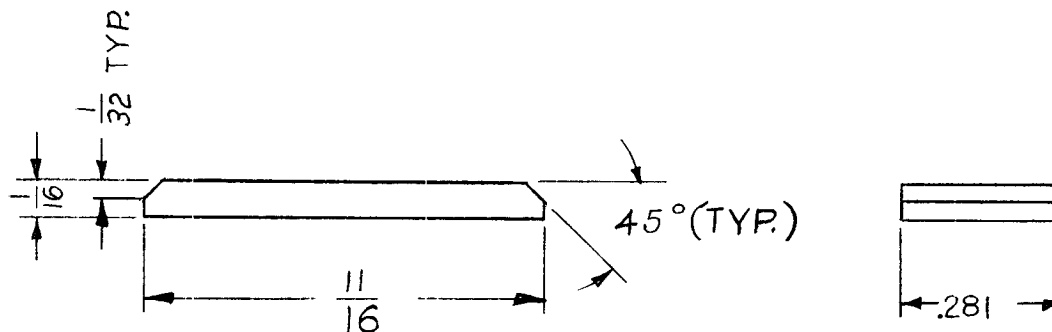
| SYM | DESCRIPTION | DATE | CH. NO. | DRAFTS | CHECKER | ENG. APP. | REQ. ITEM | PART NO. | J. STRUMER DESCRIPTION | SYMBOL | | | |
|-----|---|---------------|---|--------|---------|-----------|-----------|----------|----------------------------------|--|--------------------|------------------------------|----------------|
| | | | | | | | | | 1/8 THICK | THE TECHNICAL MATERIEL CORP. MAMARONECK. NEW YORK PADDING CRYSTAL COVER | | | |
| | | | | | | | | | STOCK SIZE | | | | |
| | | | | | | | | | POLYURETHANE (ESTANE 574 OXI) | | | | |
| | | | | | | | | | MATERIAL | | | | |
| | UNLESS OTHERWISE SPECIFIED DIMENSIONS ARE IN INCHES AND INCLUDE CHEMICALLY APPLIED OR PLATED FINISHES | SCALE FULL | | | | | | | | <i>H. Peter</i> | <i>JDE 3/12/63</i> | <i>BP</i> | |
| | | | | | | | | | TYPE & TEMPER | HEAT TREAT. SPEC. | DRAWN | CHECKED | FINAL APPROVAL |
| | DECIMALS .X ± .05 .XX ± .01 .XXX ± .005 | TOLERANCES | FRACTIONS ± 1/64 ANGLES ± 0° 30' | CODE | | | | | | | <i>JMA</i> | <i>D. Morhavi</i> 2-13-63 | RY-152 |
| | | | | | | | | | FINISH & SPEC. NO. | | LEC. DES. APP. | MECH. DES. APP. | |

| | | | | | |
|---------------|----------|------------|---------|--------|---|
| REQ. PER UNIT | USED ON | | | RY-153 | Ø |
| | MODEL | ASS'Y. NO. | DATE | | |
| | TER-100K | | 1-31-64 | | |



| REQ. UNIT | ITEM | PART NO. | F. BUDETTI DESCRIPTION | | | SYMBOL | | | |
|---|---------------------------------|---------------------|--|--------------------|---------|-------------------|-----------------|---------|----------------|
| | | 1/8 THICK | THE TECHNICAL MATERIEL CORP. MAMARONECK. NEW YORK | | | | | | |
| | | STOCK SIZE | RUBBER, MOUNT, RESILIENT | | | | | | |
| Ø | ORIGINAL RELEASE FOR PRODUCTION | 69-65 | JC | | | | | | |
| SYM | DESCRIPTION | DATE | CH. NO. | DRAFTS | CHECKER | ENG. APP. | | | |
| UNLESS OTHERWISE SPECIFIED DIMENSIONS ARE IN INCHES AND INCLUDE CHEMICALLY APPLIED OR PLATED FINISHES | | SCALE | | DURO 50 TO 60 | | | John C. Biele | | |
| TOLERANCES | | CODE | | TYPE & TEMPER | | HEAT TREAT. SPEC. | DRAWN | CHECKED | FINAL APPROVAL |
| .X ± .05 .XX ± .01 .XXX ± .005 | | S-401-231 # ZX-4149 | | BLACK | | | | | |
| FRACTIONS ± 1/64 ANGLES ± 0° 30' | | | | FINISH & SPEC. NO. | | ELEC. DES. APP. | MECH. DES. APP. | RY-153 | Ø |

| | | | | |
|---------------------|---------|------------|---------|---------|
| REQ. PER UNIT | USED ON | | | RY154 Ø |
| | MODEL | ASS'Y. NO. | DATE | |
| | HFR-2A | A3624 | 5-6-64 | |
| | HFRR-2 | A3625 | 9-11-64 | |

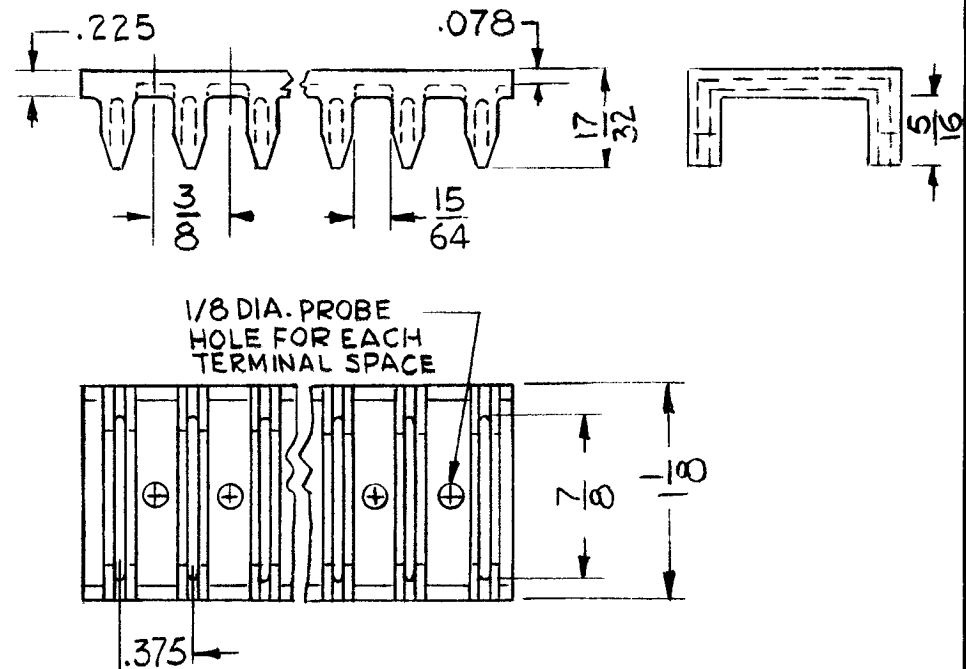


NOTE:

REMOVE ALL BURRS & SHARP EDGES

| SYM | DESCRIPTION | DATE | CH. NO. | DRAFTS | CHECKER | ENG. APP. | REQ. ITEM | PART NO. | T. KRUY | DESCRIPTION | SYMBOL |
|---|---------------------------------|---|----------------|------------|---------|-----------|--------------------|-------------------|-----------------|--|----------------|
| Ø | ORIGINAL RELEASE FOR PRODUCTION | 9.11.64 | Ø | PL | | | | 1/16 THK | | THE TECHNICAL MATERIEL CORP. MAMARONECK, NEW YORK | |
| X ₁ | TITLE WAS STRIP, NEOPRENE | 9.10.64 | X ₁ | P.L. | | | | STOCK SIZE | | | |
| X | EXPERIMENTAL RELEASE | 5/6/64 | X | AM. | | | | NEOPRENE | | | |
| | | | | | | | | | | RUBBER STRIP-LOCK | |
| UNLESS OTHERWISE SPECIFIED DIMENSIONS ARE IN INCHES AND INCLUDE CHEMICALLY APPLIED OR PLATED FINISHES | | SCALE | | 11 | | | 60 DUROMETER | | A. MARINO | @ | RPL |
| DECIMALS .X ± .05 .XX ± .01 .XXX ± .005 | | FRACTIONS ± 1/64 ANGLES ± 0° 30' | | TOLERANCES | | | TYPE & TEMPER | HEAT TREAT. SPEC. | DRAWN | CHECKED | FINAL APPROVAL |
| | | | | | | | BLACK | | | T. Kruey | RY154 Ø |
| | | | | | | | FINISH & SPEC. NO. | | ELEC. DES. APP. | MECH. DES. APP. | |

| | | | | | | | | | |
|-------------|-------------|----------------------|-------------|---------------|---------|------------|----------|-------|---|
| TMC PART NO | MFG PART NO | FITS TERMINAL BLOCKS | MAX LENGTH | REQ. PER UNIT | USED ON | | | RY155 | Ø |
| | | | | | MODEL | ASS'Y. NO. | DATE | | |
| RY155-1 | TA15MO2 | TM100&TM102 | 22 TERMINAL | | PPTA-1 | | 12-17-64 | | |



TMC PART NUMBER SHALL BE IN THE FOLLOWING FORM:

RY155-1-22

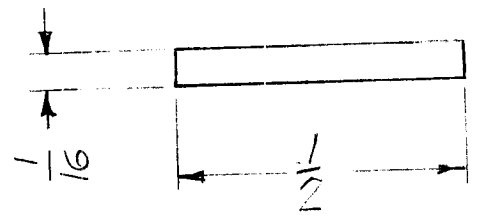
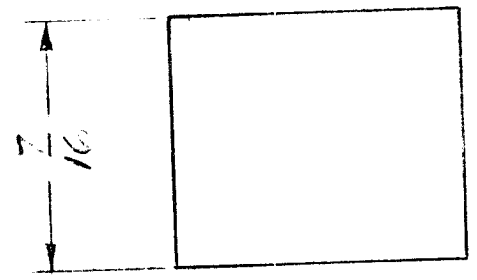
BASIC P/N TYPE NUMBER OF TERMINALS

| REQ. | ITEM | PART NO. | TOMAN/DEWEY DESCRIPTION | | | | SYMBOL |
|---|---------------------------------|---|-------------------------|--------------------|---------|-------------------|--------|
| Ø | ORIGINAL RELEASE FOR PRODUCTION | 12-28-64 | Ø | 9.2 | | | |
| X | EXPER. RELEASE | 12-17-64 | | G.D.L. | | | |
| SYMBOL | DESCRIPTION | DATE | CH. NO. | DRAFTS | CHECKER | ENG. APP. | |
| UNLESS OTHERWISE SPECIFIED DIMENSIONS ARE IN INCHES AND INCLUDE CHEMICALLY APPLIED OR PLATED FINISHES | | SCALE DO NOT SCALE | | | | | |
| DECIMALS .X ± .05 .XX ± .01 .XXX ± .010 | | FRACTIONS ± 1/32 ANGLES ± 0° 30' | | CODE C | | S401-337 | |
| TOLERANCES | | | | TYPE & TEMPER | | HEAT TREAT. SPEC. | |
| | | | | DRAWN | | CHECKED | |
| | | | | G.D.L. 12-17-64 | | @ 12-21-64 RAC | |
| | | | | FINISH & SPEC. NO. | | ELEC. DES. APP. | |
| | | | | | | MECH. DES. APP. | |
| | | | | | | RY155 Ø | |

REQ. PER UNIT
1

USED ON
MODEL: VLRB-1
ASS'Y. NO.:
DATE: 10-20-64

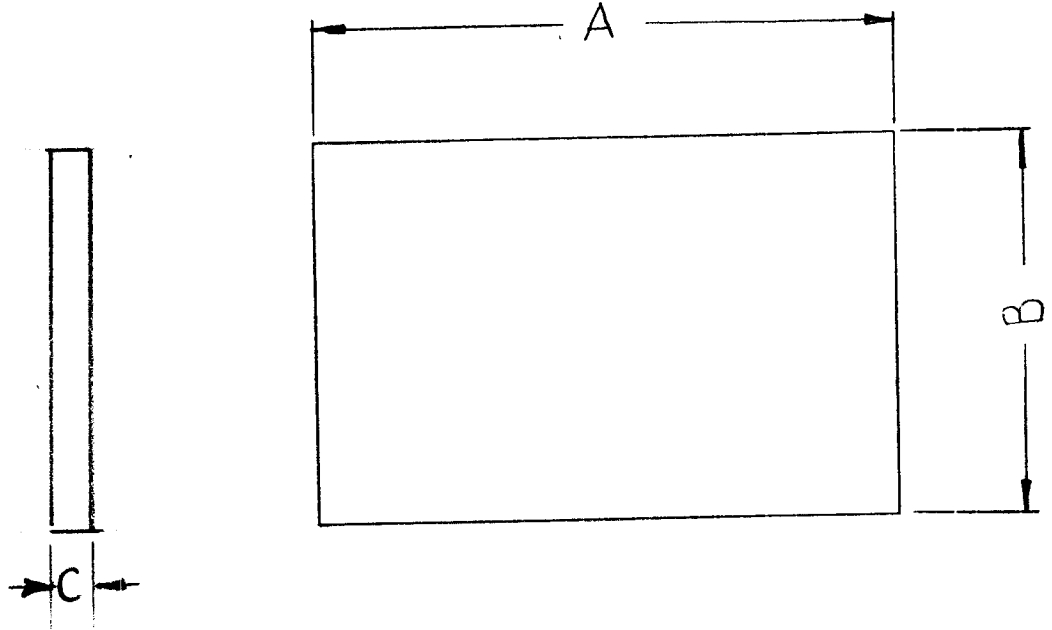
RY156 \emptyset



| SYM | DESCRIPTION | DATE | CH. NO. | DRAFTS | CHECKER | ENG. APP. | REQ. ITEM | PART NO. | DESCRIPTION | SYMBOL | |
|---|---------------------------------|---------|-------------|-------------|---------|-----------|-----------|----------------------------------|--|-----------------|-------------------|
| \emptyset | ORIGINAL RELEASE FOR PRODUCTION | 4-9-65 | \emptyset | \emptyset | | | | | 0. POSE | | |
| XI | CHAMFERS DELETED | 12-2-64 | | | GDL | | | $\frac{1}{16}$ THK STOCK SIZE | THE TECHNICAL MATERIEL CORP. MAMARONECK, NEW YORK | | |
| X | EXPER. RELEASE | | | | | | | NEOPRENE | LINING, FRICTION, LOCK | | |
| | | | | | | | | MATERIAL | | | |
| UNLESS OTHERWISE SPECIFIED DIMENSIONS ARE IN INCHES AND INCLUDE CHEMICALLY APPLIED OR PLATED FINISHES | | | | | | | SCALE | DUROMETER | | DAC | MAH 4/9/65 |
| TOLERANCES | | | | | | | CODE | TYPE & TEMPER | HEAT TREAT. SPEC. | CHECKED | FINAL APPROVAL |
| DECIMALS X $\pm .05$ XX $\pm .01$ XXX $\pm .005$ | | | | | | | A | BLACK | | MECH. DES. APP. | RY156 \emptyset |
| FRACTIONS $\pm 1/64$ ANGLES $\pm 0^\circ 30'$ | | | | | | | | FINISH & SPEC. NO. | | ELEC. DES. APP. | |

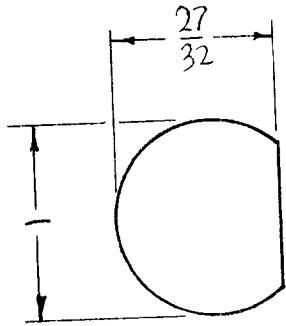
| | | | | | |
|---------------|-----------|------------|---------|-------|---|
| REQ. PER UNIT | USED ON | | | RY157 | A |
| | MODEL | ASS'Y. NO. | DATE | | |
| 1 | GPT10KAV7 | AX507S2 | 1-21-66 | | |

| | | | |
|------------|----|----|------|
| TMC PT. NO | A | B | C |
| RY157-1 | 6" | 4" | 3/16 |



| REQ. ITEM | PART NO. | BUDETTI DESCRIPTION | SYMBOL |
|---|---|--|----------------------------------|
| | SEE CHART | THE TECHNICAL MATERIEL CORP. MAMARONECK, NEW YORK | |
| | STOCK SIZE | RUBBER, STRIP | |
| A | STOCK BLOCK WAS 3/16 | | |
| Ø | ORIGINAL RELEASE FOR PRODUCTION | | |
| SYM | DESCRIPTION | DATE | CH. NO. DRAFTS CHECKER ENG. APP. |
| UNLESS OTHERWISE SPECIFIED DIMENSIONS ARE IN INCHES AND INCLUDE CHEMICALLY APPLIED OR PLATED FINISHES | | SCALE 1/1 | |
| DECIMALS .X ± .05 .XX ± .01 .XXX ± .005 | FRACTIONS ± 1/64 ANGLES ± 0° 30' | TOLERANCES | CODE |
| DURO 50-60 | | TYPE & TEMPER | HEAT TREAT. SPEC. |
| BLACK | | FINISH & SPEC. NO. | |
| DRAWN | | CHECKED | FINAL APPROVAL |
| ELEC. DES. APP. | | MECH. DES. APP. | |

| | | | | | |
|---------------|----------|------------|---------|-------|---|
| REQ. PER UNIT | USED ON | | | RY159 | Ø |
| | MODEL | ASS'Y. NO. | DATE | | |
| 1 | TSTE-10K | A4113 | 8-26-65 | | |



| | | | | | | | | | |
|---|------------------------------------|---|---------|----------------------|----------|--|--|--|----------------|
| | | | | REQ. ITEM | PART NO. | F. BUDETTI DESCRIPTION | | | SYMBOL |
| | | | | 3/32 THICK | | THE TECHNICAL MATERIEL CORP. MAMARONECK. NEW YORK | | | |
| | | | | STOCK SIZE | | PAD, CUSHION | | | |
| | | | | SILICONE RUBBER | | | | | |
| | | | | MATERIAL | | | | | |
| | | | | DURO ±5 RATING-50 | | DRAWN | | | CHECKED |
| | | | | TYPE & TEMPER | | HEAT TREAT. SPEC. | | | FINAL APPROVAL |
| | | | | | | MECH. DES. APP. | | | |
| | | | | FINISH & SPEC. NO. | | ELEC. DES. APP. | | | |
| Ø | ORIGINAL RELEASE FOR PRODUCTION | 9/3/66 | Ø | CV. | | | | | |
| SYM | DESCRIPTION | DATE | CH. NO. | DRAFTS | CHECKER | ENG. APP. | | | |
| UNLESS OTHERWISE SPECIFIED DIMENSIONS ARE IN INCHES AND INCLUDE CHEMICALLY APPLIED OR PLATED FINISHES | | SCALE | | 1:1 | | | | | |
| DECIMALS .X ± .05 .XX ± .01 .XXX ± .005 | | FRACTIONS ± 1/64 ANGLES ± 0° 30' | | CODE | | A | | | |
| TOLERANCES | | | | RY159 Ø | | | | | |