

**STANDARD RESISTANCES**

Resistance (OHMS)	Nom. Resolution (Percent)
50	I.4
100	I.0
200	0.8
500	0.7
1,000	0.5
2,000	0.4
5,000	0.35
10,000	0.25
20,000	0.20

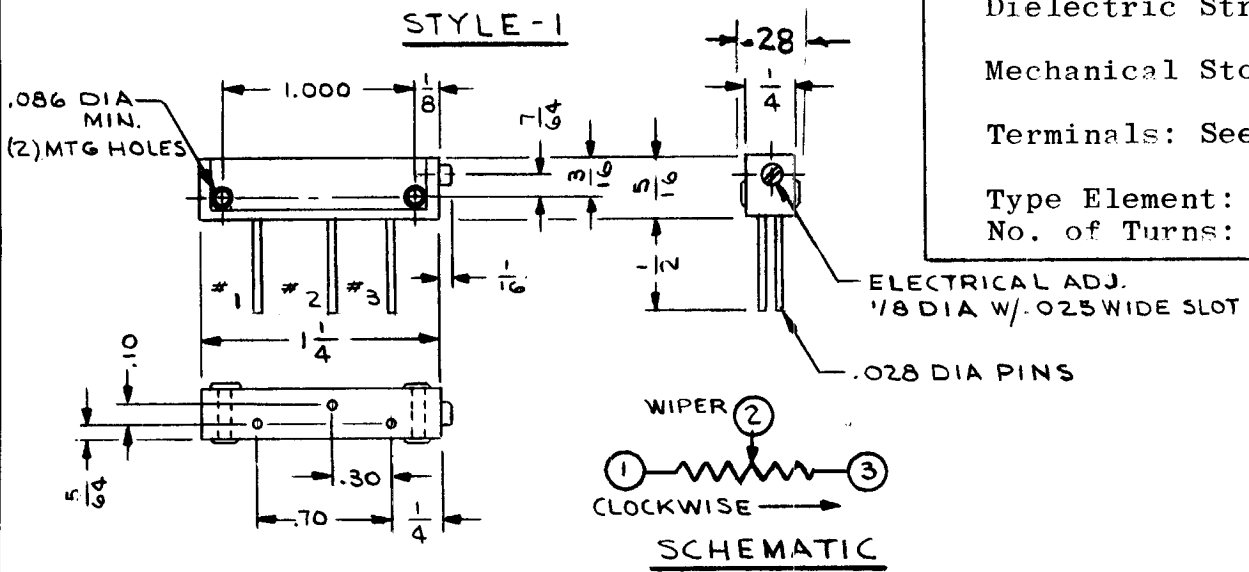
REQ. PER UNIT	USED ON		
	MODEL	ABS'Y. NO.	DATE
	RTPH-1		1/4/66

**RV121**  $\emptyset$

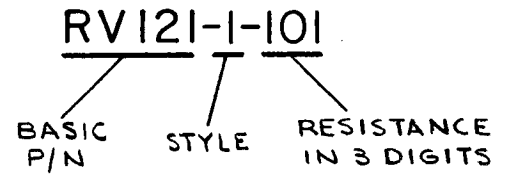
SPECIFICATION

Resistance Range: 50 $\Omega$  to 20K  
 Resistance Tol:  $\pm$ 10%  
 Temp. Coefficient: 100PPM/ $^{\circ}$ C Max.  
 Power Rating: 1/2Watt @ 25 $^{\circ}$ C DeRate To Zero @ 105 $^{\circ}$ C  
 Oper. Temp. Range: -55 To +105 $^{\circ}$ C  
 Dielectric Strength: 500 VAC Min.  
 Mechanical Stop: Idler Clutch  
 Terminals: See Pictorials  
 Type Element: Wire  
 No. of Turns: 22+ 5

STYLE-1



TMC P/N Shall Be In Following Form



SYM		DESCRIPTION	DATE	CH. NO.	DRAFTS	CHECKER	ENG. APP.
$\emptyset$	ORIGINAL RELEASE		1/6/66				
UNLESS OTHERWISE SPECIFIED DIMENSIONS ARE IN INCHES AND INCLUDE CHEMICALLY APPLIED OR PLATED FINISHES		SCALE					
DECIMALS	TOLERANCES	FRACTIONS	CODE				
.X $\pm$ .05		$\pm$ 1/64					
.XX $\pm$ .01		ANGLES					
.XXX $\pm$ .005		$\pm$ 0 $^{\circ}$ 30'					

REQ.	ITEM	PART NO.	DESCRIPTION		SYMBOL
			<b>THE TECHNICAL MATERIEL CORP.</b> MAMARONECK. NEW YORK		
			<b>RESISTOR, VARIABLE</b>		
MATERIAL					
TYPE & TEMPER		HEAT TREAT. SPEC.	DRAWN	CHECKED	FINAL APPROVAL
			JL	JL 1/5/66	JL 1/5/66
FINISH & SPEC. NO.			ELC. DES. APP.	MECH. DES. APP.	
					<b>RV121</b> $\emptyset$