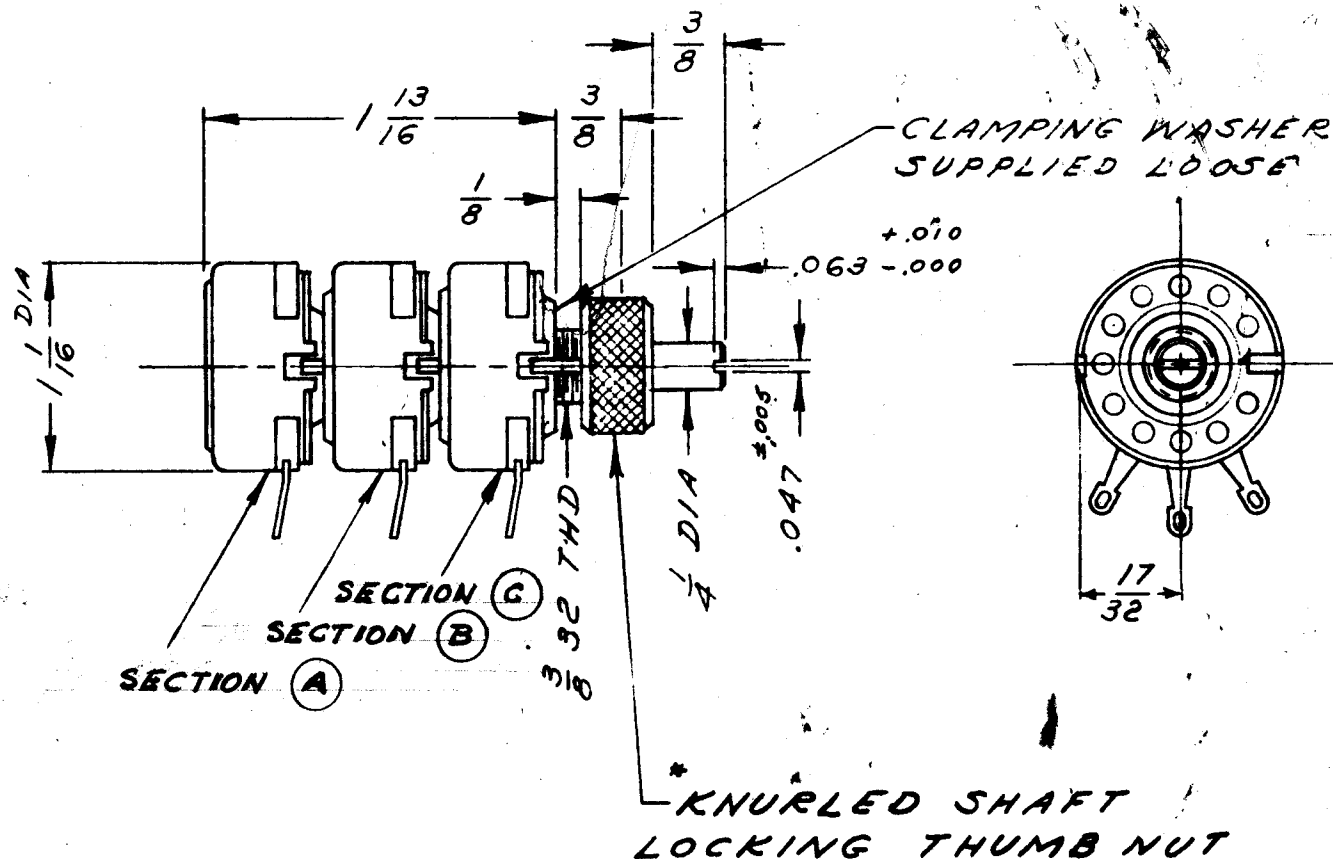


NOTICE: When Government drawings, specifications, or other data are used for any purpose other than in connection with a definitely related Government procurement operation, the United States Government thereby incurs no responsibility, nor any obligations whatsoever; and the fact that the Government may have formulated, furnished, or in any way supplied the said drawings, specifications, or other data is not to be regarded by implication or otherwise as in any manner endorsing the holder or any other person or corporation, or conveying any rights or permission to manufacture, use, or sell any patented invention that may in any way be related thereto.

NEXT ASSEMBLY	1ST USED ON

REVISIONS			
SYM	DESCRIPTION	DATE	APPROVAL
A	DWG. NO. WAS MB-1046	6-4-53	<i>[Signature]</i>
B	SECTION A, B, C WAS R-38A, B, C	10-3-55	<i>[Signature]</i>



RESISTOR, VARIABLE; COMPOSITION; TRIPLE SECTION; 3 SOLDER LUG TERMINALS ON EACH SECTION; PHENOLIC AND METAL CASE; INSULATED CONTACT ARM; NORMAL TORQUE; LOCKING DEVICE; NONTURN DEVICE LOCATED ON $\frac{17}{32}$ RADIUS AT 9 O'CLOCK; ALLEN BRADLEY TYPE JJJ 20639

SECTION (A) RESISTOR, VARIABLE; PART OF R 38, REAR SECTION; 1.0 MEGOHM ± 20% 2 WATT 100°C. MAXIMUM OPERATION; LINEAR TAPER.

SECTION (B) RESISTOR, VARIABLE; PART OF R 38, MIDDLE SECTION; 0.5 MEGOHM ± 20%; 2 WATT, 100°C. MAXIMUM OPERATION; LINEAR TAPER.

SECTION (C) RESISTOR, VARIABLE; PART OF R 38, FRONT SECTION; 0.5 MEGOHM ± 20%; 2 WATT, 100°C. MAXIMUM OPERATION; LINEAR TAPER.

* KNURLED SHAFT LOCKING THUMB NUT; ALLEN BRADLEY PART NO - M-3318

NOTICE TO PERSONS RECEIVING THIS DRAWING

THE TECHNICAL MATERIEL CORPORATION claims proprietary right in the material disclosed hereon. This drawing is issued in confidence for engineering information only and may not be reproduced or used to manufacture anything shown hereon without permission from THE TECHNICAL MATERIEL CORPORATION to the user. This drawing is loaned for mutual assistance and is subject to recall at any time.

Property of:

THE TECHNICAL MATERIEL CORPORATION
MAMARONECK, NEW YORK

REQD	PART NO.	DESCRIPTION	MATL	MATL SPEC	UNIT WT.	ZONE
UNLESS OTHERWISE SPECIFIED	AUTHENTICATION		RESISTOR VARIABLE SFO-2 REGENERATOR		THE TECHNICAL MATERIEL CORPORATION MAMARONECK, NEW YORK	
DIMENSIONS ARE IN INCHES TOLERANCES ON FRACTIONS ± $\frac{1}{64}$ DECIMALS ± 0.005 ANGLES ± 1°-0'	DRAWN TMC					
	TRACED					
	CHECKED TMC					
	VERIFIED CAM					
COMMERCIAL TOLERANCES APPLY TO STOCK SIZES	APPD	REV	DATE 8 APR. 49	SCALE 1/1	RV-103	ISSUE BY A B